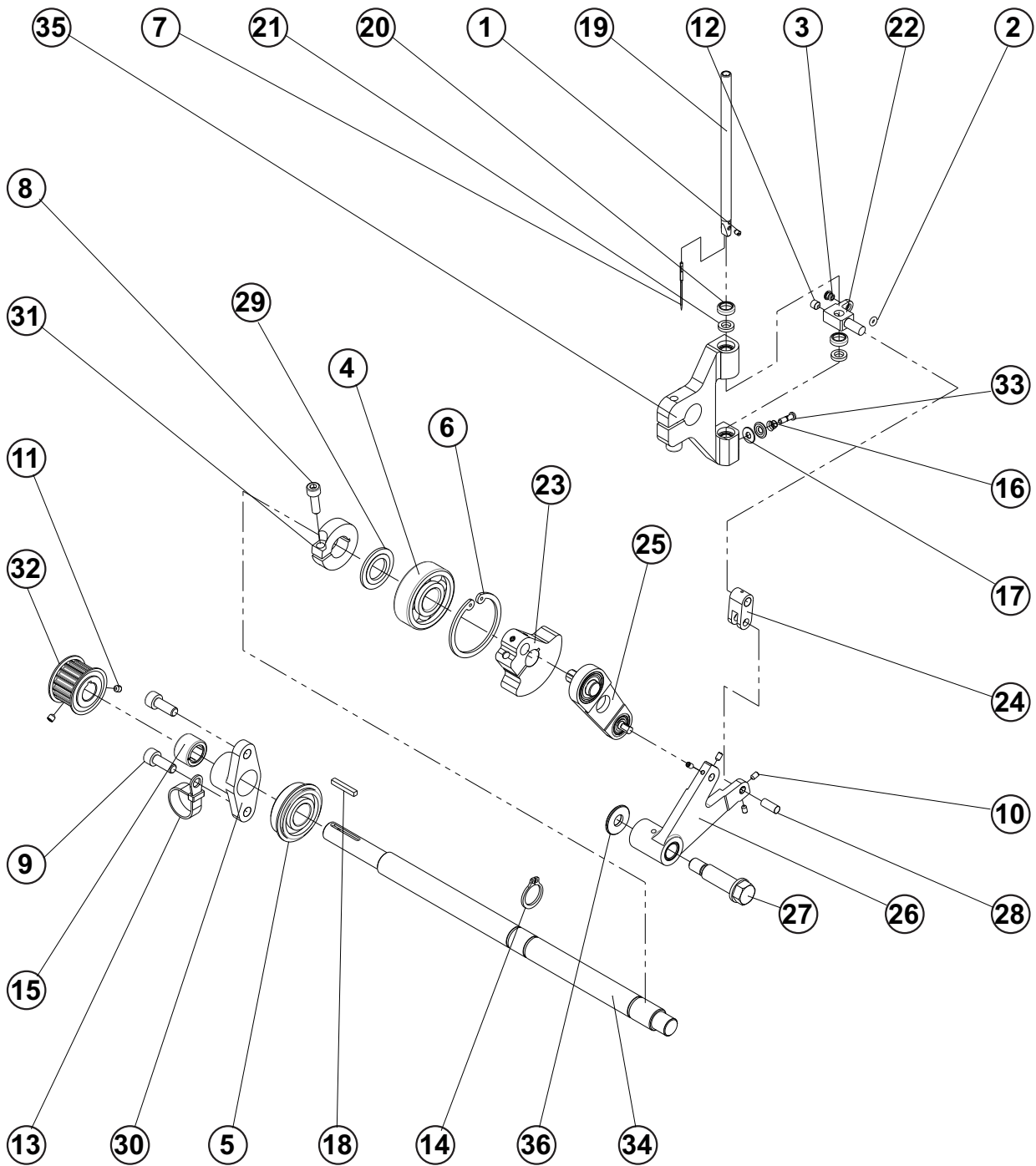


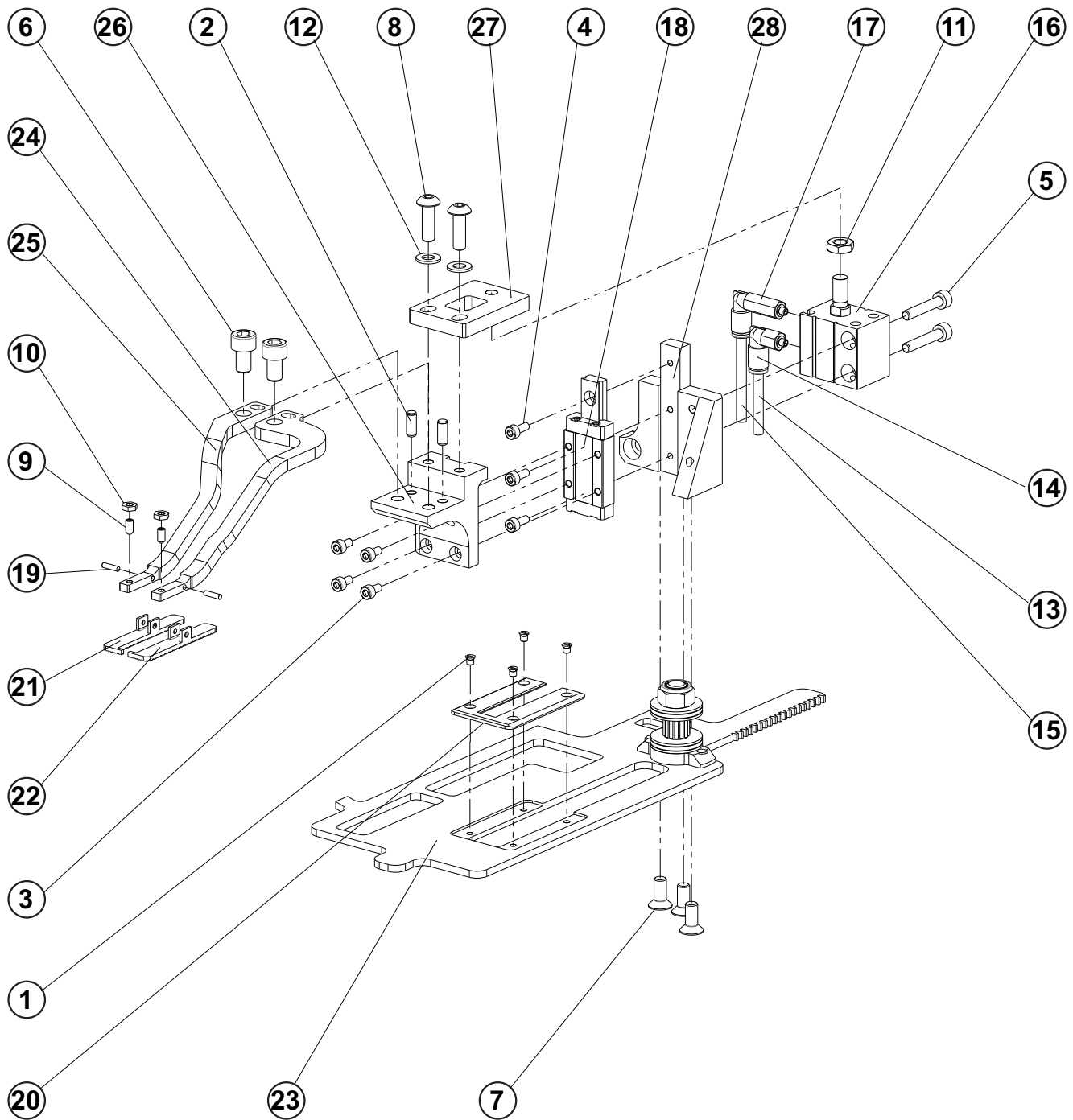
TABLE OF CONTENTS

NEEDLE BAR	3-2
CLAMPING	3-4
THREAD TRIMMER	3-6
SHIFTER MECHANISM	3-8
FEED MECHANISM	3-10
LOOPER MECHANISM	3-14
BITE MECHANISM	3-16
MAIN CAM ASSEMBLY	3-18
BASE ASSEMBLY	3-20
BEDPLATE TOP ASSEMBLY	3-22
BEDPLATE BOTTOM ASSEMBLY	3-24
THREAD DRAW - OFF ASSEMBLY	3-26
HEAD ASSEMBLY	3-28
COVERS ASSEMBLY	3-30
LUBRICATION ASSEMBLY	3-32
INDEXER CLAMPING BRACKET	3-34
INDEXER CLAMPING 30° ASSEMBLY	3-36
Y-AXIS INDEXER ASSEMBLY	3-38
INDEXER COVER ASSEMBLY	3-40
THREAD PICK-UP ASSEMBLY	3-42
TABLE	3-44
TABLE	3-46
TABLE ROLLER KIT - EXTRA PARTS	3-48
ELECTRICAL I	3-50
ELECTRICAL II	3-54
ELECTRICAL III	3-56
PNEUMATICS	3-58
ACCESSORIES	3-62
THREAD PICK-UP - EXTRA PARTS	3-64
RECOMENDED PARTS	3-66

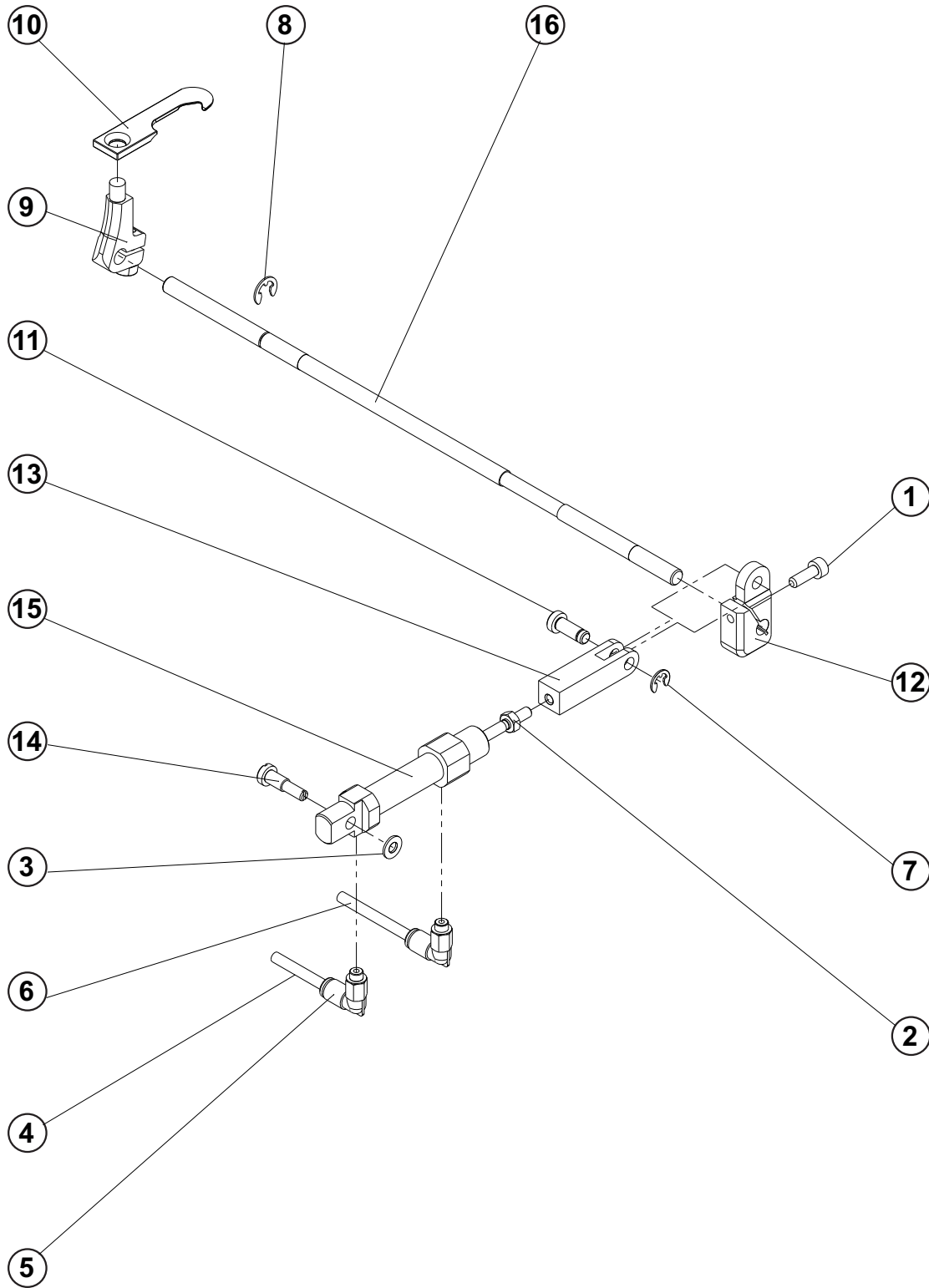
NEEDLE BAR



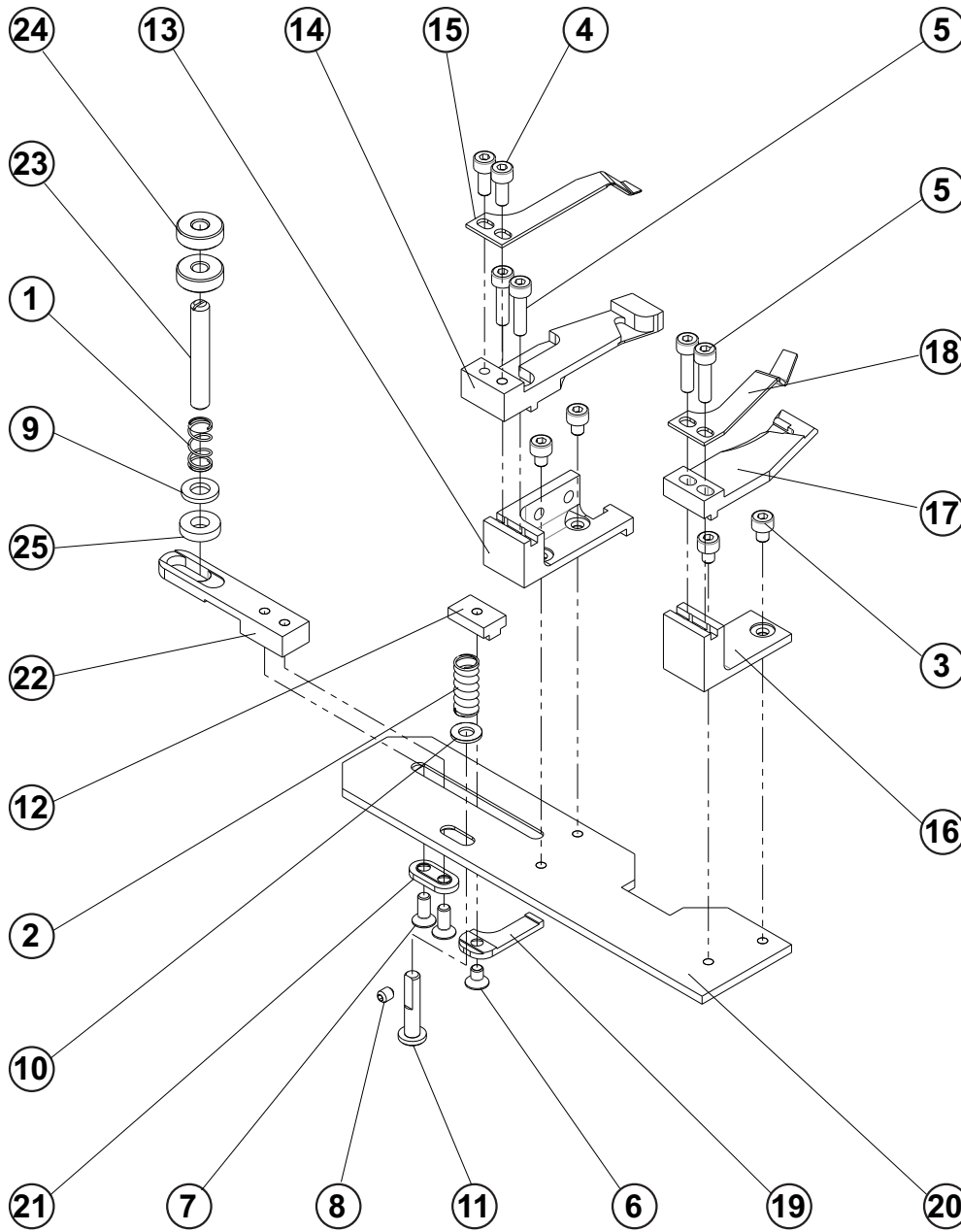
CLAMPING



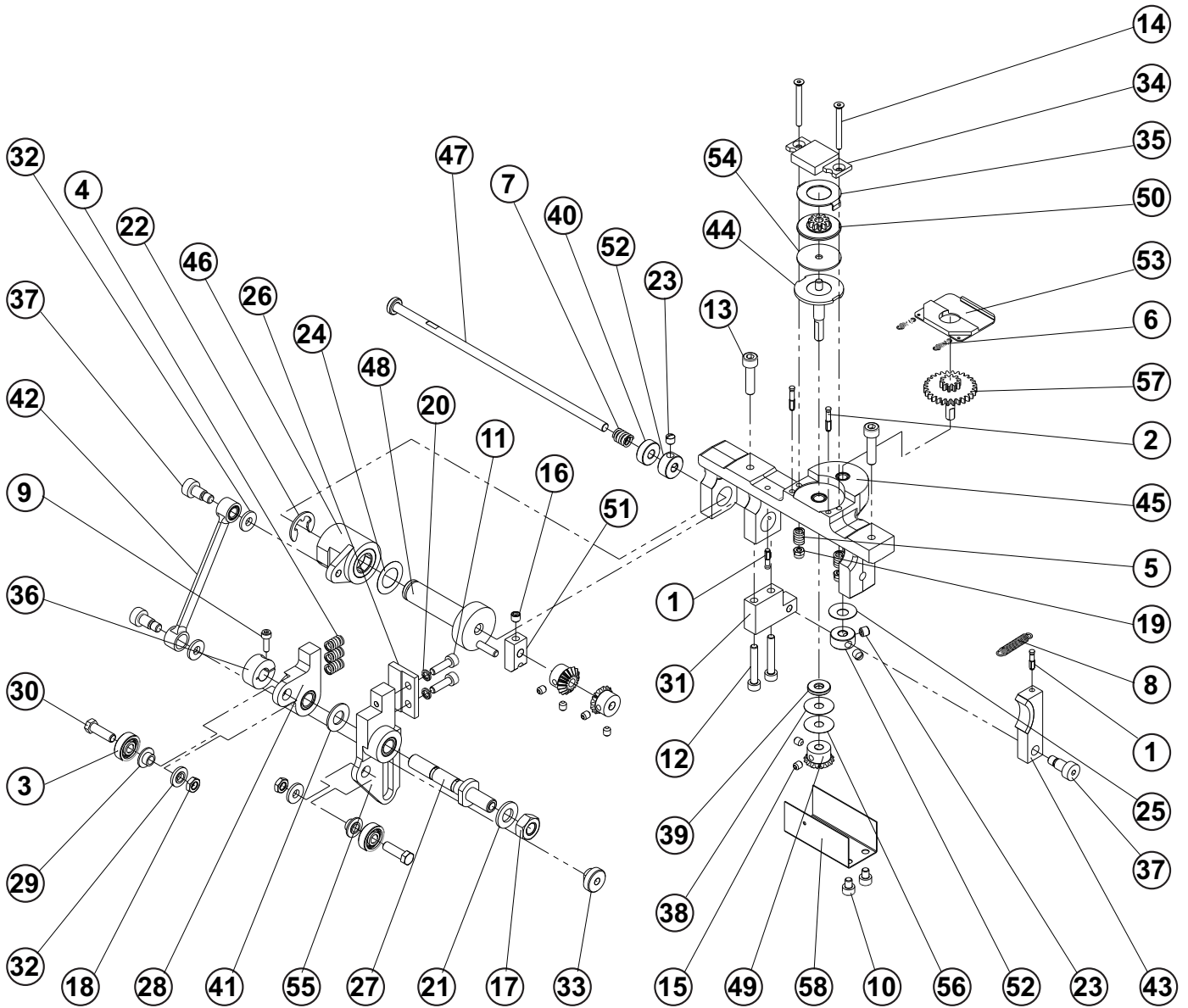
THREAD TRIMMER



SHIFTER MECHANISM



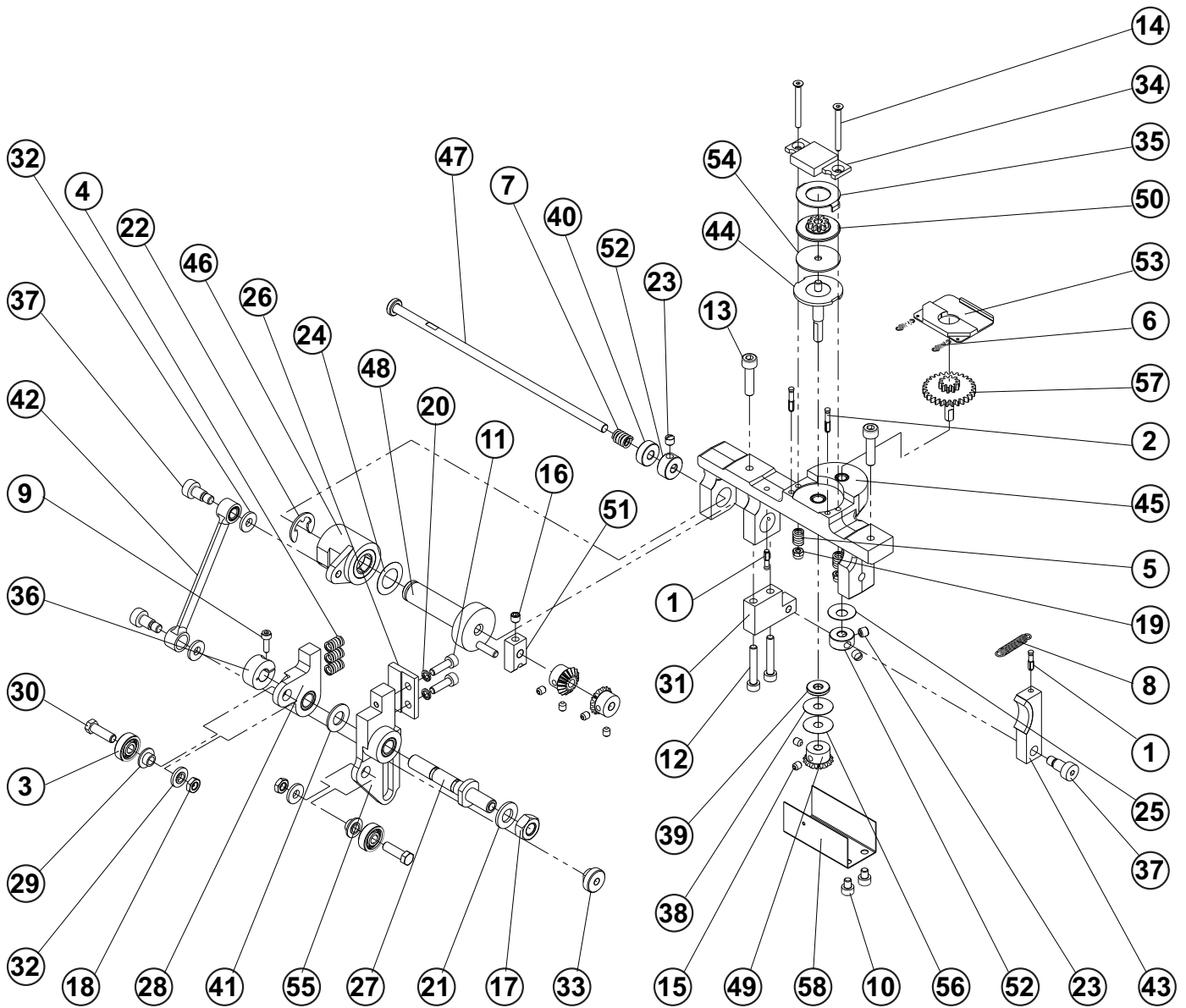
FEED MECHANISM



FEED MECHANISM

DET	PART NUMBER	DESCRIPTION	QTY.
01	07.6045.0.009	PIN 3x12	2
02	07.6045.0.037	PIN 3-16	2
03	07.6321.0.025	BEARING	2
04	07.6440.0.018	SPRING	3
05	07.6440.0.028	SPRING	2
06	07.6440.0.033	SPRING	2
07	07.6440.0.041	SPRING	1
08	07.6440.0.050	SPRING	1
09	08.6000.3.010	SCREW M3-10	1
10	08.6000.4.005	SCREW M4-5	2
11	08.6000.4.014	SCREW M4-14	2
12	08.6000.4.025	SCREW M4-25	2
13	08.6000.5.020	SCREW M5-20	2
14	08.6100.3.030	SCREW M3-30	2
15	08.6400.4.005	SCREW M4-5	6
16	08.6400.5.005	SCREW M5-5	1
17	08.6700.8.000	NUT M8	1
18	08.6710.5.000	NUT M5	2
19	08.6733.3.000	NUT M3	2
20	08.6800.4.000	WASHER 4	2
21	08.6850.8.000	WASHER 8	1
22	12.1045.0.009	E-CLIP 9	1
23	17.0011.1.149	SCREW M5x0,5-5	3
24	17.0019.0.517	WASHER	1
25	17.0019.2.057	LOCK WASHER	1
26	22.0021.0.000	SPRING RETAINER BLOCK	1
27	22.0022.0.000	PIVOT SHAFT	1
28	22.0026.0.000	L.H.FEED CAM FOLLOWER	1
29	22.0031.0.000	BEARING SPACER	2
30	22.0032.0.000	SCREW , FEED FOLLOWER	2
31	22.0049.0.000	FEED BRAKE MOUNTING BLOCK	1
32	22.0100.0.000	SHOULDER WASHER	4
33	22.0110.0.000	SHOULDER NUT M5	1
34	22.0114.0.000	FEED BRAKE PRESSURE PLATE	1
35	22.0121.0.000	SLIP CLUTCH DRIVE WASHER	1
36	22.0183.0.000	RING	1
37	22.0184.0.000	SCREW M5x8	3
38	22.0186.0.000	WASHER	1
39	22.0208.0.000	WASHER	1
40	22.0228.0.000	COLLAR	1
41	22.0232.0.000	WASHER	1
42	22.0305.0.000	FEED CONNECTING LINK	1
43	22.0309.0.050	FEED BRAKE ASSY	1
44	22.0312.0.000	SLIP CLUTCH FEED SHAFT	1
45	22.0315.0.000	FEED SHAFT BRACKET ASSM.	1
46	22.0320.0.000	FEED SHAFT BEARING HOUSING	1

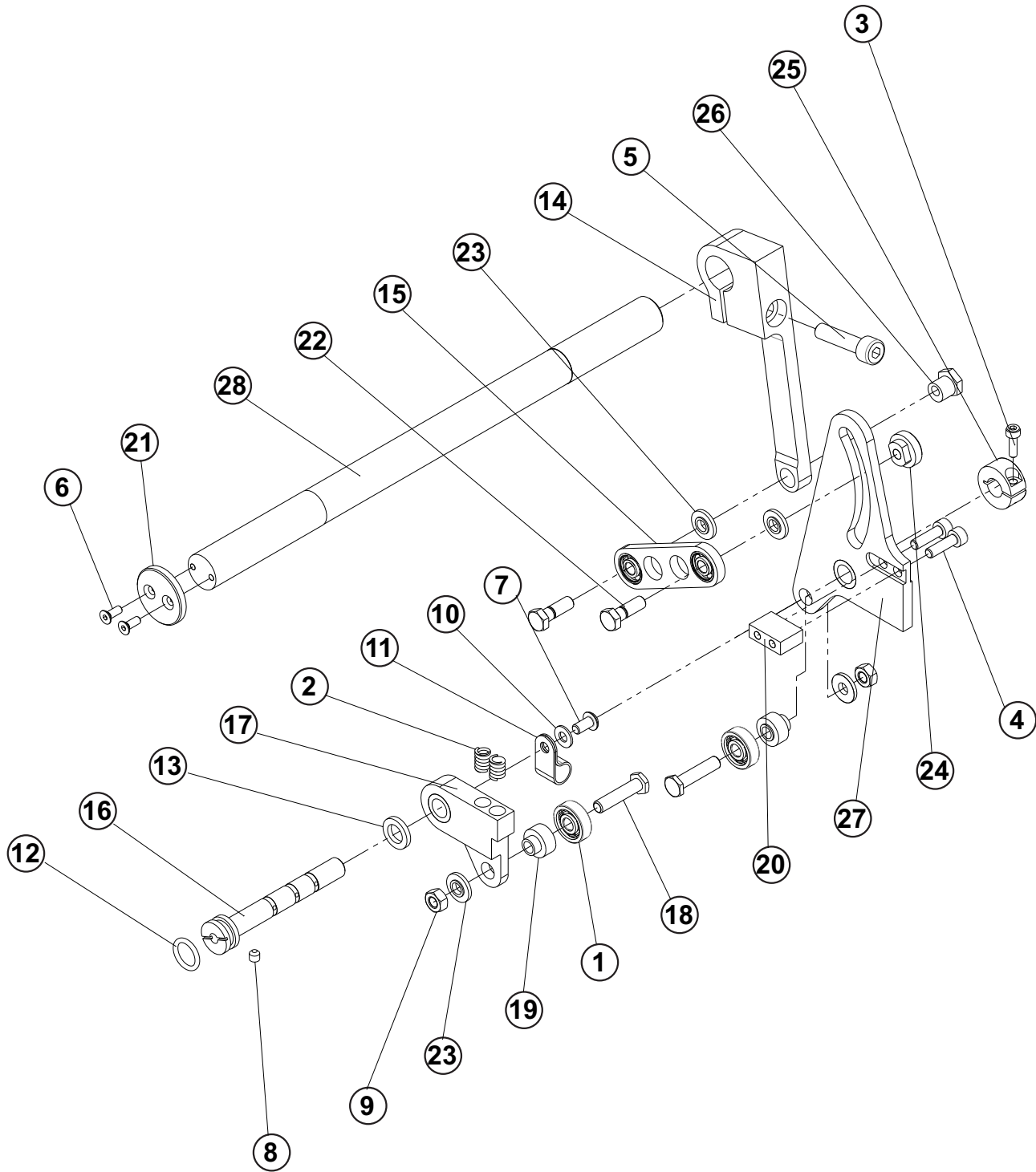
FEED MECHANISM



LOOPER MECHANISM

DET	PART NUMBER	DESCRIPTION	QTY.
01	01.1382.0.000	SCREW 6-40x4	1
02	01.1397.0.000	SCREW 6-40x4,8	4
03	07.6440.0.036	SPRING	3
04	08.6000.3.010	SCREW M3-10	1
05	08.6000.4.014	SCREW M4-14	2
06	08.6100.5.020	SCREW M5-20	2
07	08.6700.8.000	NUT M8	1
08	08.6710.5.000	NUT M5	2
09	08.6800.4.000	WASHER 4	2
10	08.6850.8.000	WASHER 8	1
11	12.2010.1.002	BEARING LR	2
12	20.0094.0.000	KNIFE - TRIMMER	1
13	20.0111.0.000	FIRST LOOPER	1
14	20.0112.0.000	SECOND LOOPER	1
15	22.0021.0.000	SPRING RETAINER BLOCK	1
16	22.0022.0.000	PIVOT SHAFT	1
17	22.0023.0.000	R.H.LOOPER CAM FOLLOWER PLATE	1
18	22.0024.0.000	LOOPER CAM FOLLOWER PLATE	1
19	22.0031.0.000	BEARING SPACER	2
20	22.0064.0.000	BITE SHOULDER SCREW	1
21	22.0100.0.000	SHOULDER WASHER	3
22	22.0105.0.000	LOOPER ECCENTRIC NUT	1
23	22.0183.0.000	RING	1
24	22.0232.0.000	WASHER	1
25	22.0233.0.000	WASHER	1
26	22.2410.0.000	SPREADER	1
27	22.2425.0.050	LOOPER LINK ASSY.	1
28	22.2440.0.000	LOOPER SHAFT	2
29	22.2442.0.000	LOOPER SPACER	2
30	23.2106.0.000	FIRST LOOPER HOLDER	1
31	23.2107.0.000	SECOND LOOPER HOLDER	1
32	24.0066.0.000	SCREW	2

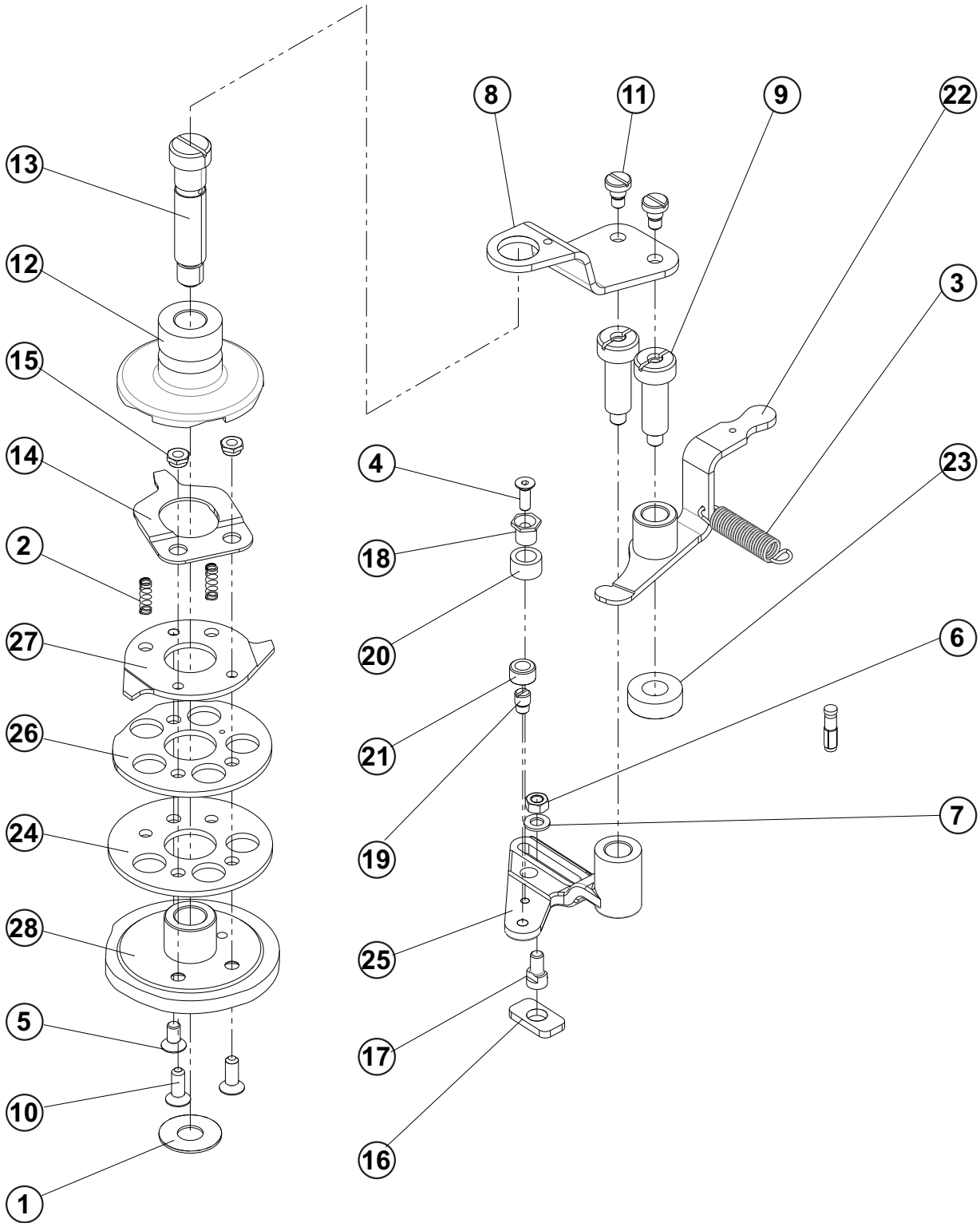
BITE MECHANISM



BITE MECHANISM

DET	PART NUMBER	DESCRIPTION	QTY.
01	07.6321.0.025	BEARING	2
02	07.6440.0.028	SPRING	2
03	08.6000.3.010	SCREW M3-10	1
04	08.6000.4.014	SCREW M4-14	2
05	08.6000.6.025	SCREW M6-25	1
06	08.6100.3.008	SCREW M3-8	2
07	08.6200.4.008	SCREW M4-8	1
08	08.6400.4.004	SCREW M4-4	1
09	08.6700.5.000	NUT M5	2
10	08.6850.4.000	WASHER M4	1
11	12.0008.4.280	CLAMP CABLE	1
12	12.0008.6.800	O-RING 10x2	1
13	17.0019.1.062	WASHER	1
14	22.0008.0.000	BITE LEVER	1
15	22.0009.0.050	BITE ADJUSTING LINK ASSY.	1
16	22.0020.0.000	BITE PIVOT SHAFT	1
17	22.0027.0.000	RIGHT CAM FOLLOWER	1
18	22.0028.0.000	SCREW, BITE FOLLOWER	2
19	22.0029.0.000	BITE FOLLOWER BEARING SPACER	2
20	22.0030.0.000	BITE FOLLOWER SPRING RETAINER	1
21	22.0063.0.000	BITE SHAFT RETAINER	1
22	22.0064.0.000	BITE SHOULDER SCREW	2
23	22.0100.0.000	SHOULDER WASHER	4
24	22.0110.0.000	SHOULDER NUT M5	1
25	22.0183.0.000	RING	1
26	22.0214.0.000	ECENTRIC NUT M5	1
27	24.0033.0.000	LEFT CAM FOLLOWER	1
28	24.0055.0.000	BITE SHAFT	1

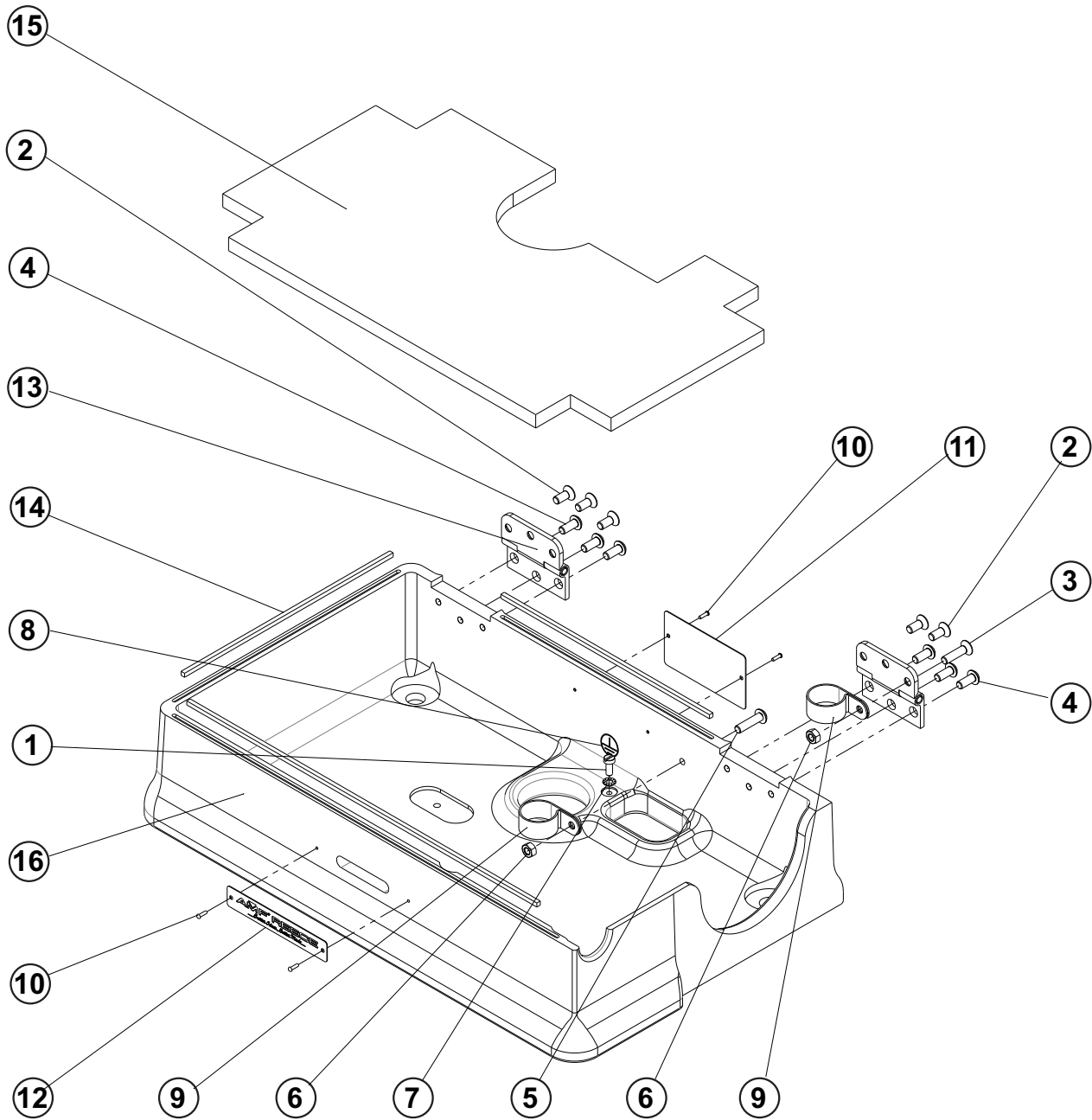
MAIN CAM ASSEMBLY



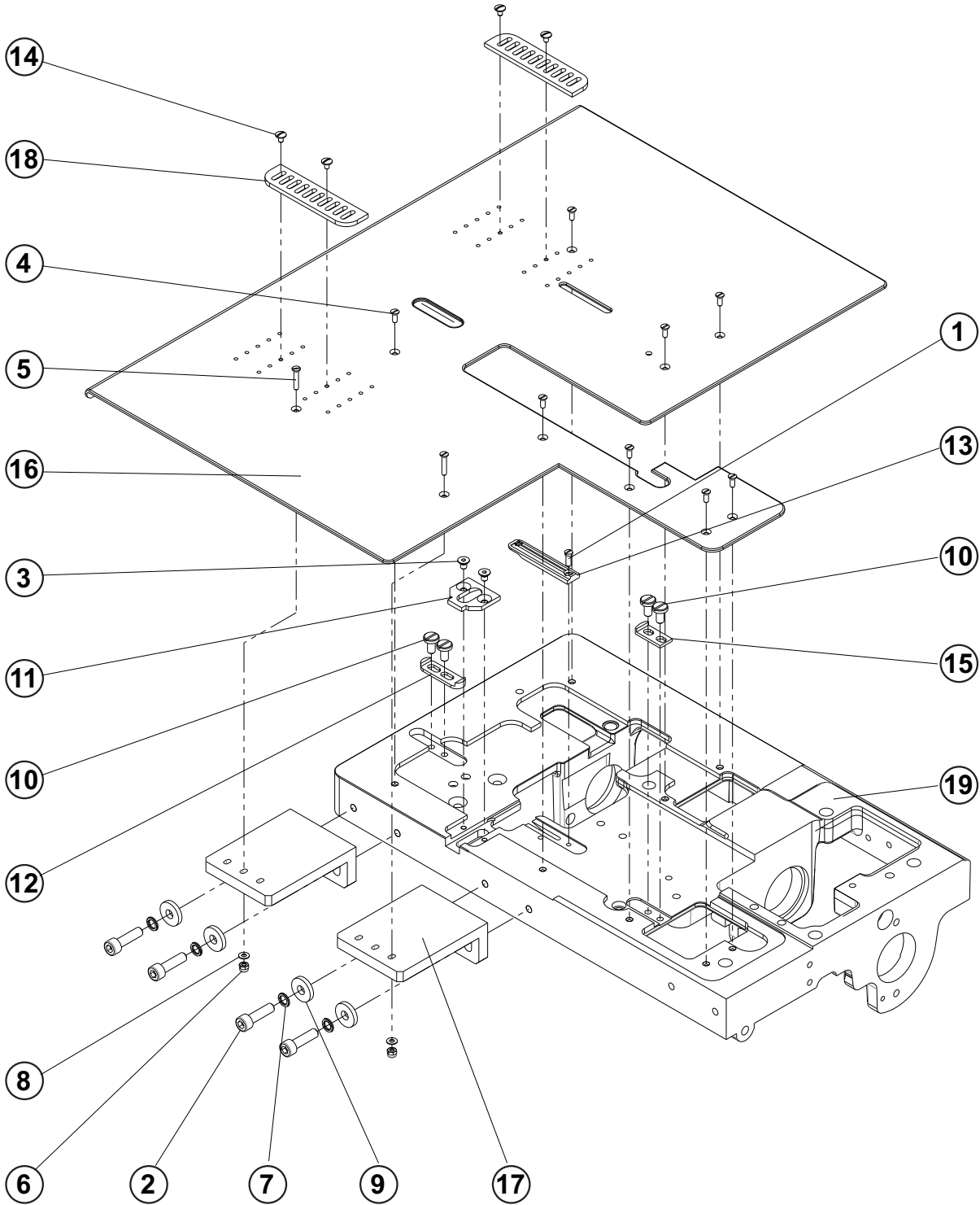
MAIN CAM ASSEMBLY

DET	PART NUMBER	DESCRIPTION	QTY.
01	07.6321.0.001	BEARING PLATE	1
02	07.6440.0.037	SPRING	2
03	07.6440.0.045	SPRING	1
04	08.6100.4.012	SCREW M4-12	1
05	08.6100.5.010	SCREW M5-10	1
06	08.6700.5.000	NUT M5	1
07	08.6850.5.000	WASHER 5,3	1
08	22.0097.0.000	BRACE, MAIN CAM	1
09	22.0106.0.000	HUB SHOULDER SCREW	2
10	22.0137.0.000	SCREW M5x14	2
11	22.0182.0.000	SCREW n6/M5x4	2
12	22.2607.0.000	WORM GEAR HUB	1
13	22.2610.0.000	SCREW M10x64	1
14	22.2626.0.000	SWITCH SPRING, DRIVE DISK	1
15	22.2627.0.000	SHOULDER NUT	2
16	22.2631.0.000	CLAMP PLATE SLIDESTONE	1
17	22.2633.0.000	SLIDESTONE RETAINING SCREW	1
18	22.2635.0.000	ECCENTRIC	1
19	22.2637.0.000	STUD, BARRING LEVER	1
20	22.2638.0.000	ROLL	1
21	22.2639.0.000	BARRING LEVER ROLL	1
22	22.2640.0.050	FEED REVERSING LEVER ASSEMBLY	1
23	22.3003.0.000	ISBH SPACER, MAIN CAM	1
24	22.3069.0.000	WASHER	1
25	24.2630.1.000	BARRING LEVER	1
26	24.3070.0.000	FEED REVERS. CAM - ISBH	1
27	24.3076.1.000	STOP DISK ISBH	1
28	24.3077.0.000	MAIN CAM ISBH	1

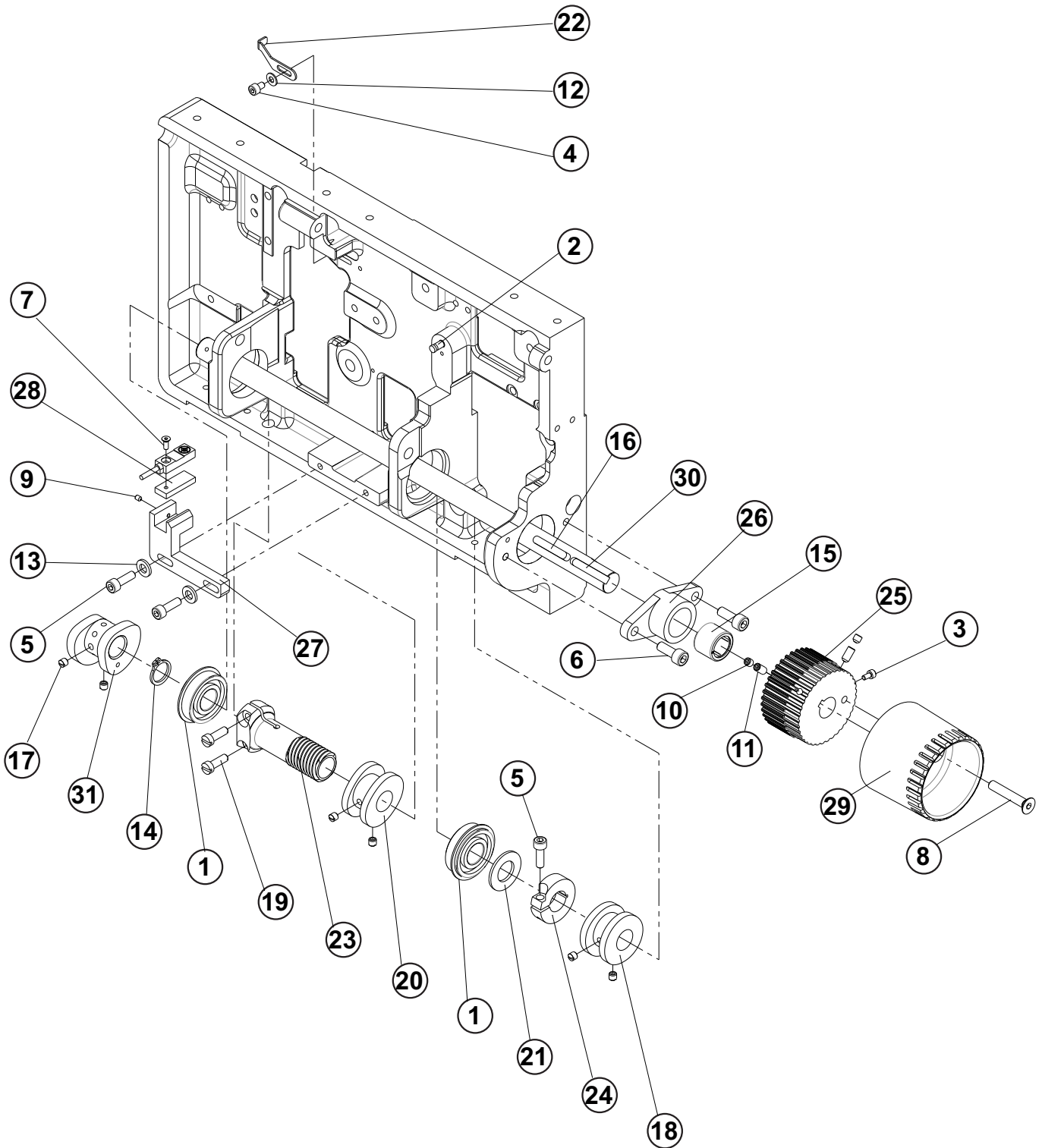
BASE ASSEMBLY



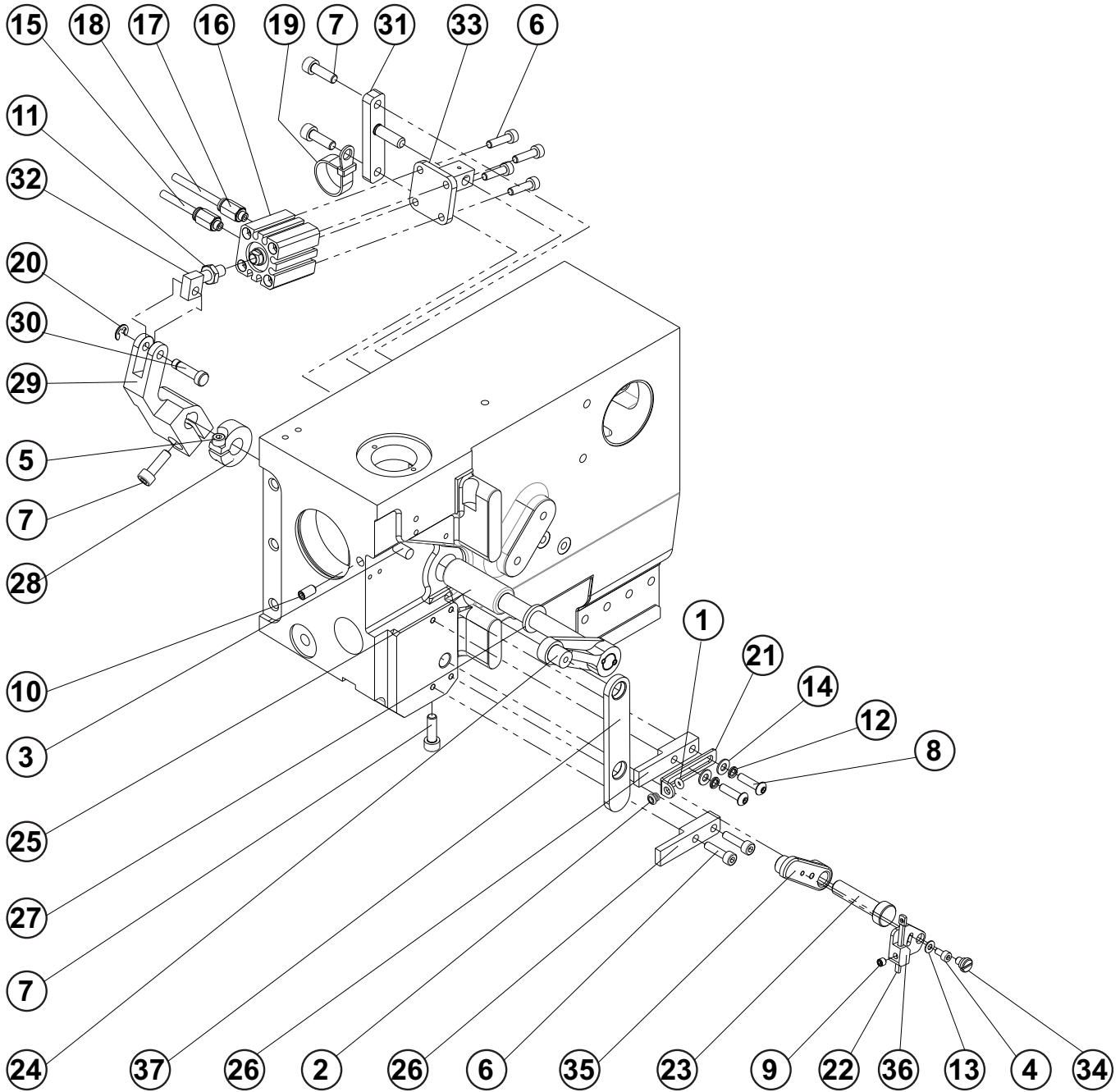
BEDPLATE TOP ASSEMBLY



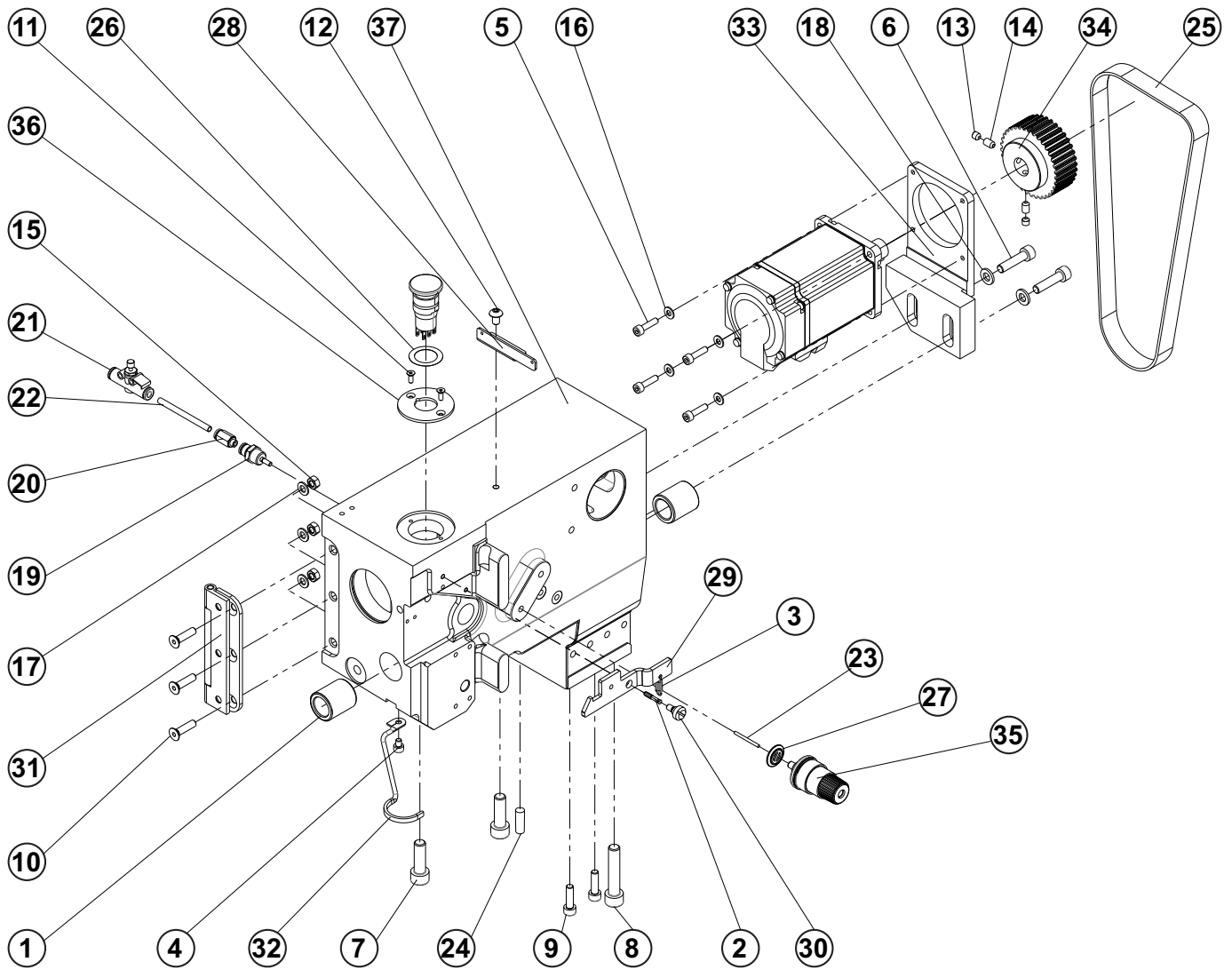
BEDPLATE BOTTOM ASSEMBLY



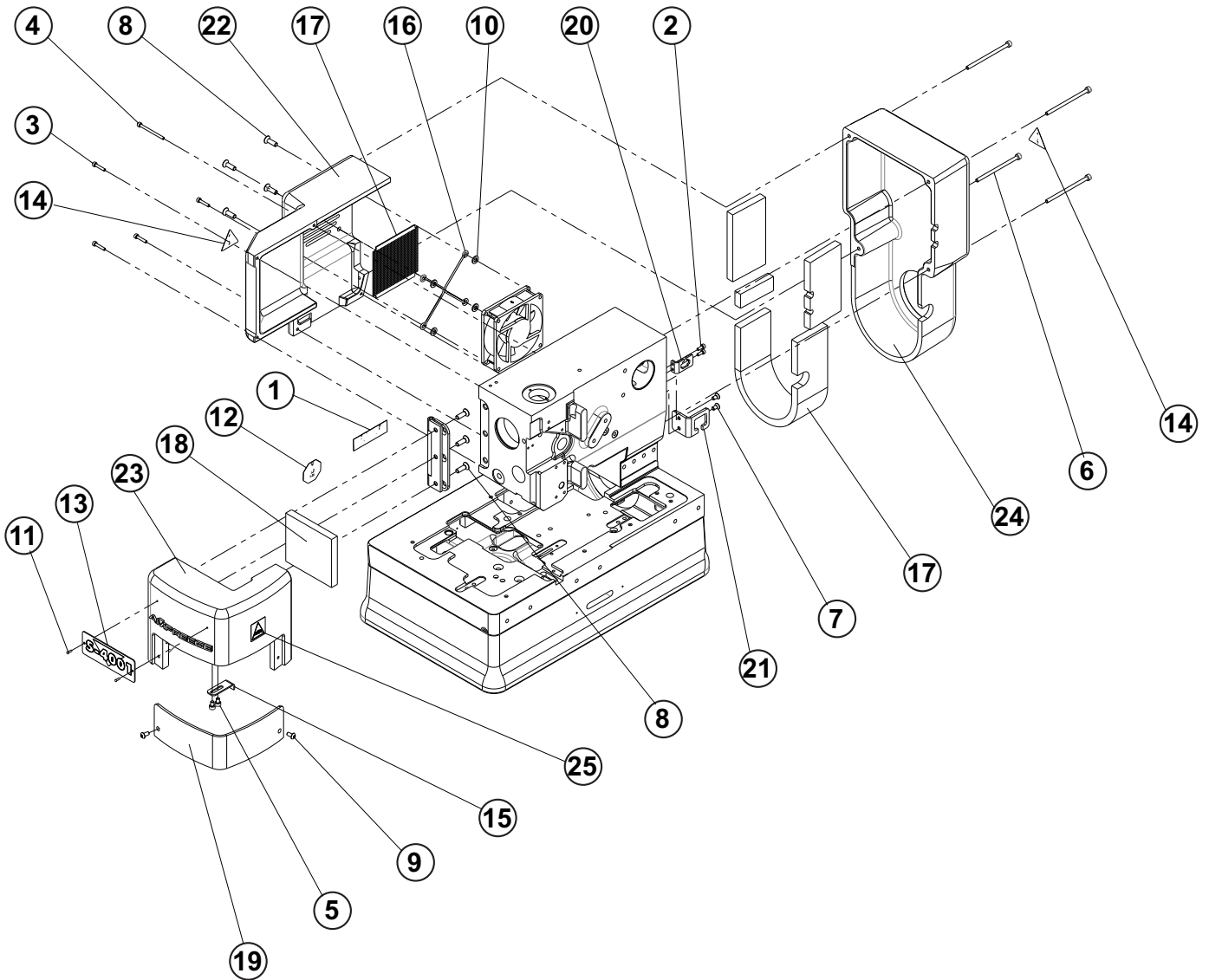
THREAD DRAW - OFF ASSEMBLY



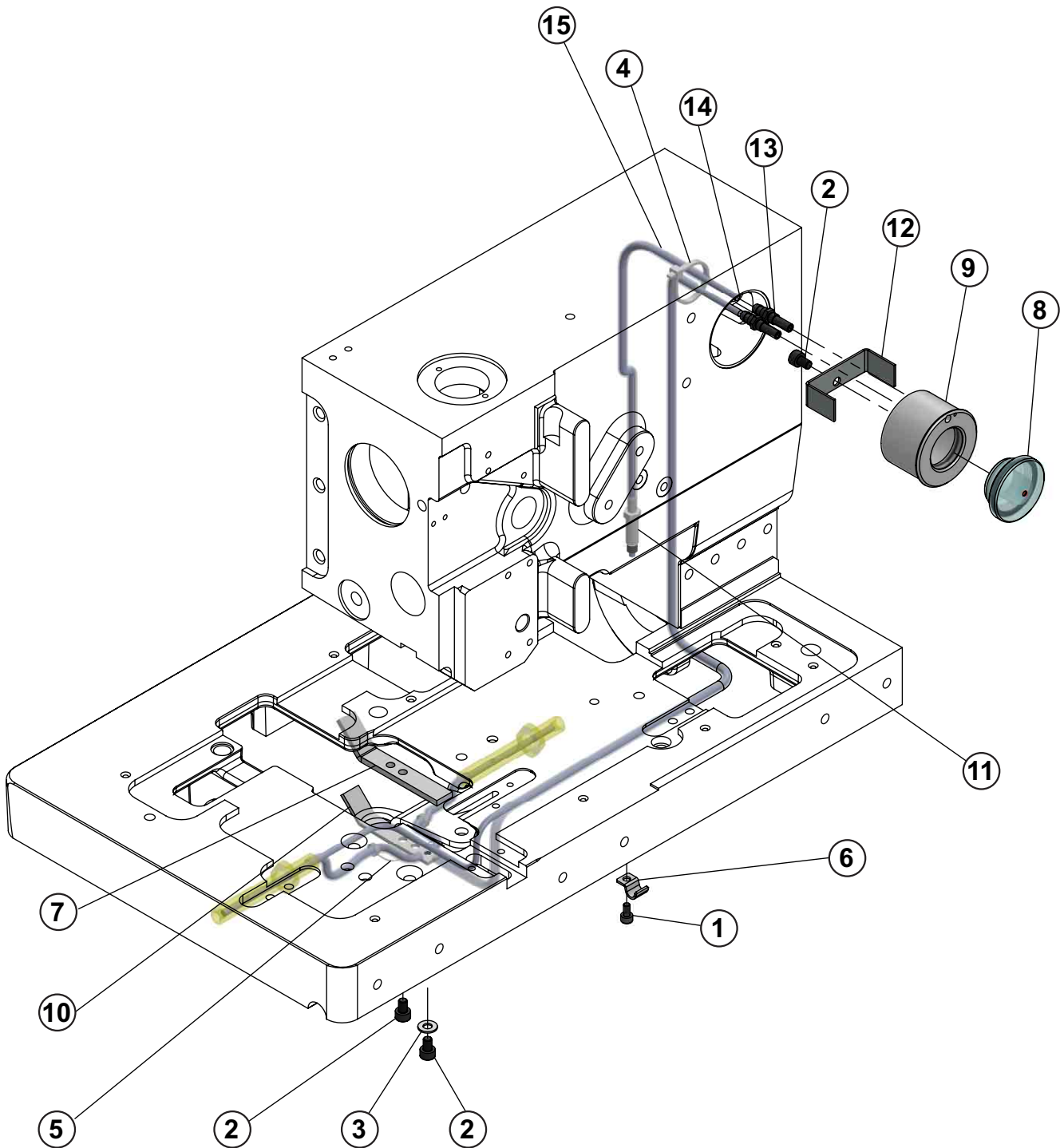
HEAD ASSEMBLY



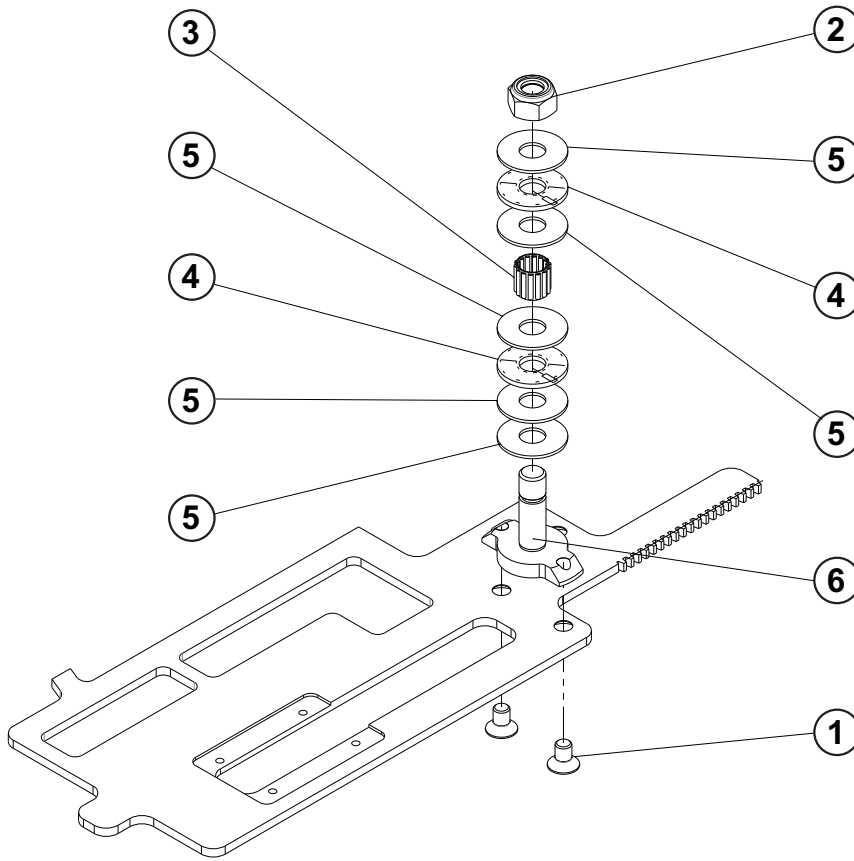
COVERS ASSEMBLY



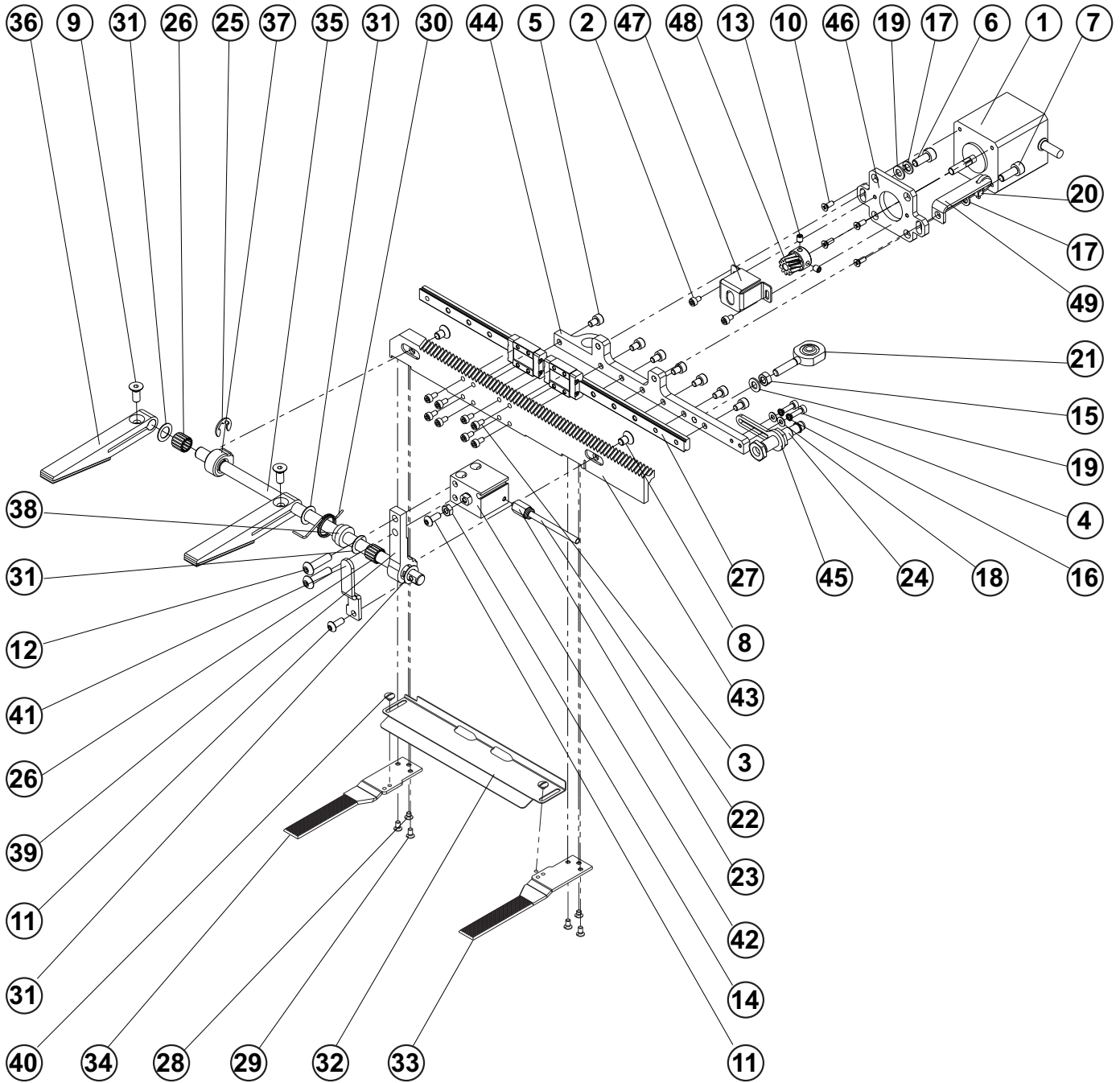
LUBRICATION ASSEMBLY



INDEXER CLAMPING BRACKET



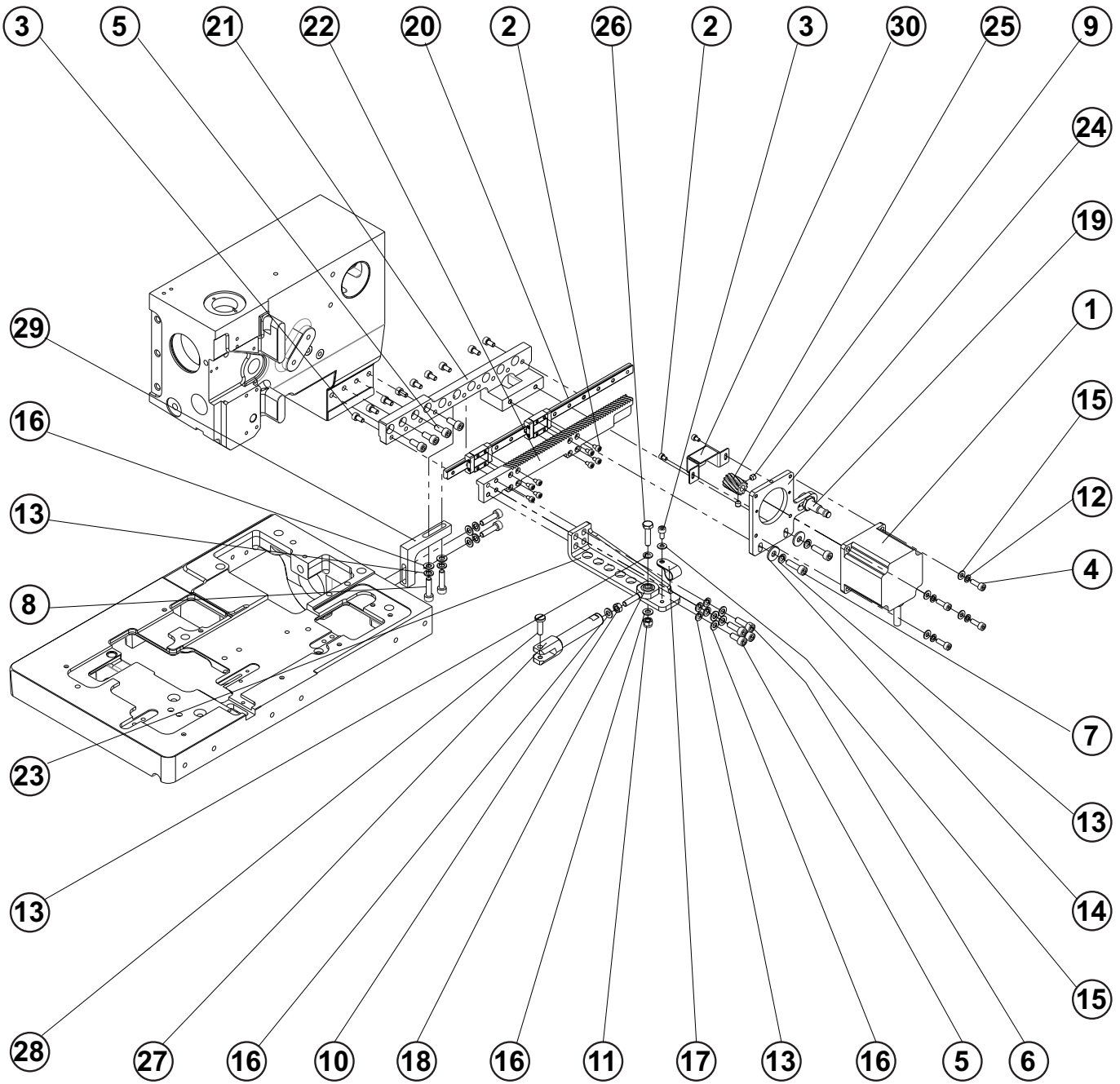
INDEXER CLAMPING 30° ASSEMBLY



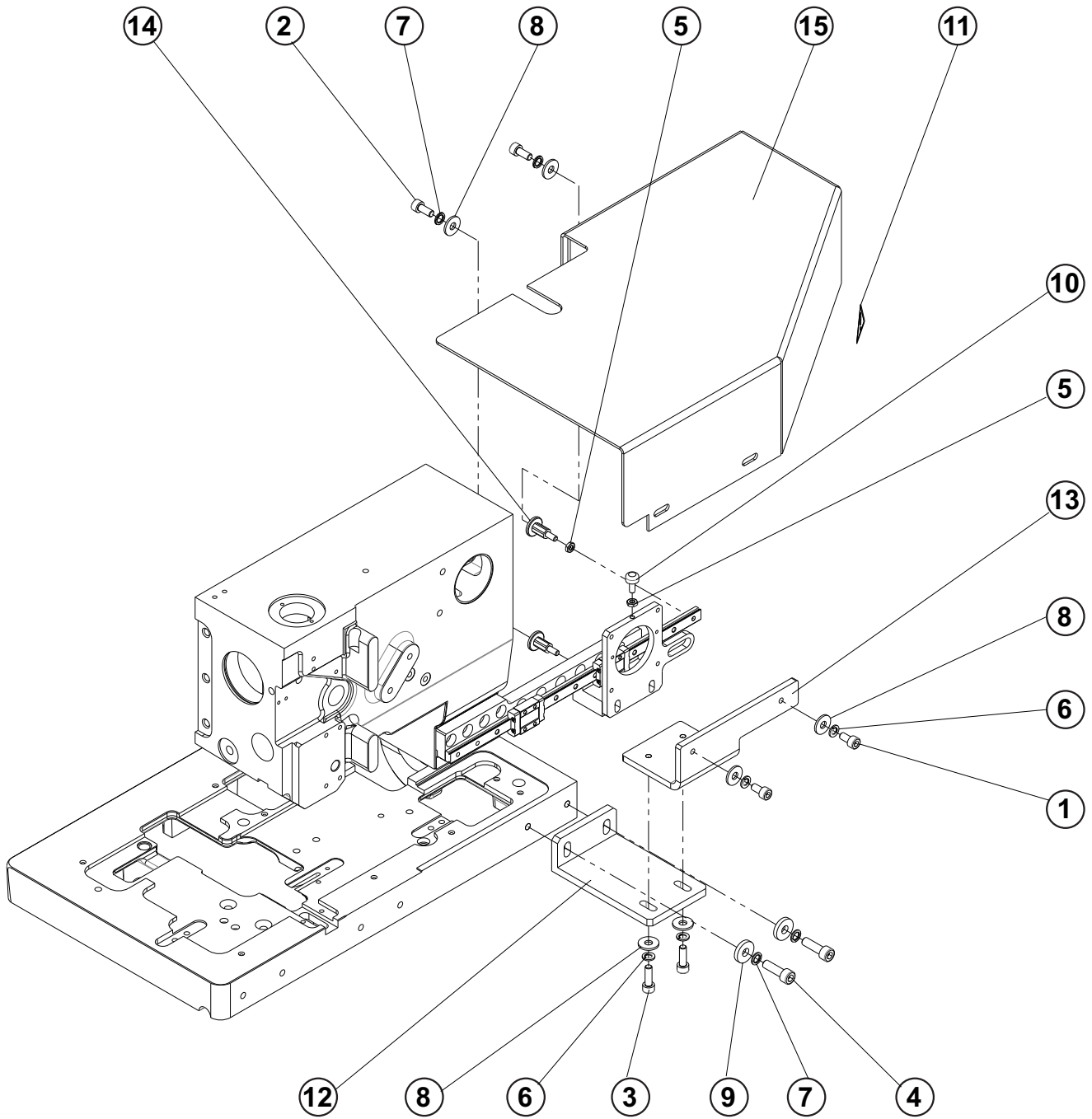
INDEXER CLAMPING 30° ASSEMBLY

DET	PART NUMBER	DESCRIPTION	QTY.
01	06.2400.2.956	STEPPER MOTOR SM2 ASSY.	1
02	08.6002.3.005	SCREW M3-5	2
03	08.6002.3.006	SCREW M3-6	8
04	08.6002.3.010	SCREW M3-10	2
05	08.6002.4.006	SCREW M4-6	7
06	08.6002.5.012	SCREW M5-12	1
07	08.6002.5.014	SCREW M5-14	1
08	08.6102.5.008	SCREW M5-8	2
09	08.6102.5.012	SCREW M5-12	2
10	08.6132.3.008	SCREW M3-8	4
11	08.6202.4.010	SCREW M4-10	2
12	08.6202.5.020	SCREW M5-20	2
13	08.6402.4.005	SCREW M4-5	2
14	08.6702.4.000	NUT M4	1
15	08.6702.5.000	NUT M5	1
16	08.6802.3.000	SPRING WASHER M3	2
17	08.6802.5.000	SPRING WASHER M5	2
18	08.6852.3.000	WASHER M3	2
19	08.6852.5.000	WASHER 5,3	2
20	12.0008.3.023	TY-WRAP	1
21	12.0008.6.531	BALL JOINT	1
22	12.0010.3.080	AIR TUBE- J11A	1
23	12.0010.3.119	CONNECTOR	1
24	12.0010.4.093	SENSOR	1
25	12.1045.0.007	RETAINER RING 7	1
26	12.2050.0.007	NEEDLE BEARING	2
27	12.2070.1.057	LINEAR GUIDE	1
28	15.1431.0.100	SCREW M3-4	2
29	15.1436.0.100	SCREW M3-6	4
30	24.4010.0.000	SPRING	1
31	24.4068.0.005	WASHER	4
32	24.4110.1.000	MATERIAL GUIDE	1
33	24.4111.2.000	INDEXER CLAMPING MAT-RIGHT	1
34	24.4112.2.000	INDEXER CLAMPING MAT-LEFT	1
35	24.4113.0.000	INDEXER SHAFT	1
36	24.4114.0.000	INDEXER CLAMP FOOT	2
37	24.4115.0.000	INDEXER SHAFT HOLDER	1
38	24.4116.0.000	BUSHING	1
39	24.4117.0.000	CYLINDER BRACKET	1
40	24.4118.0.000	SCREW M3x0,35-2,5	2
41	24.4119.0.000	LEVER	1
42	24.4120.0.000	CYLINDER CUJB16	1
41	24.4121.0.000	INDEXER CLAMP RACK	1
44	24.4122.0.000	LINEAR GUIDE HOLDER	1
45	24.4123.1.000	SENSOR BRACKET	1
46	24.4124.0.000	MOTOR HOLDER	1
47	24.4126.0.000	COVER GEAR	1
48	24.4127.0.000	MOTOR GEAR 10z-20° RIGHT	1
49	24.4143.0.000	BRACKET	1

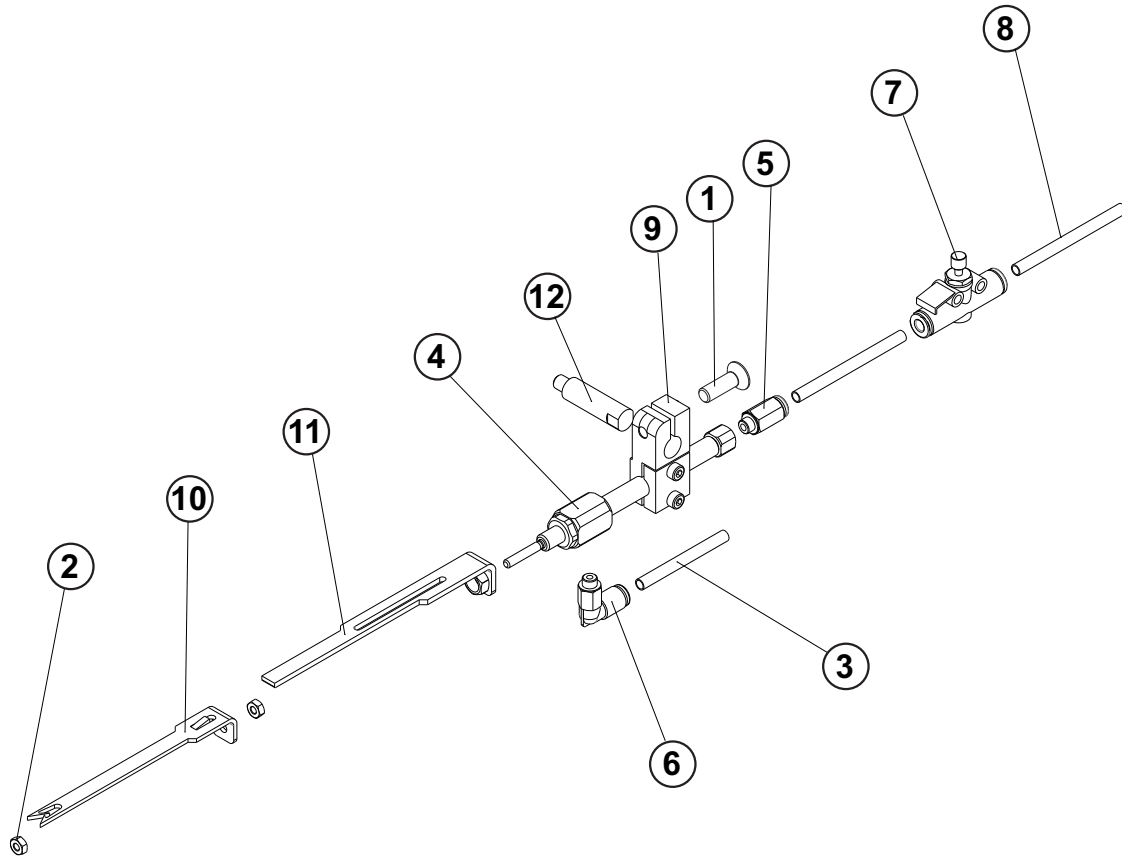
Y-AXIS INDEXER ASSEMBLY



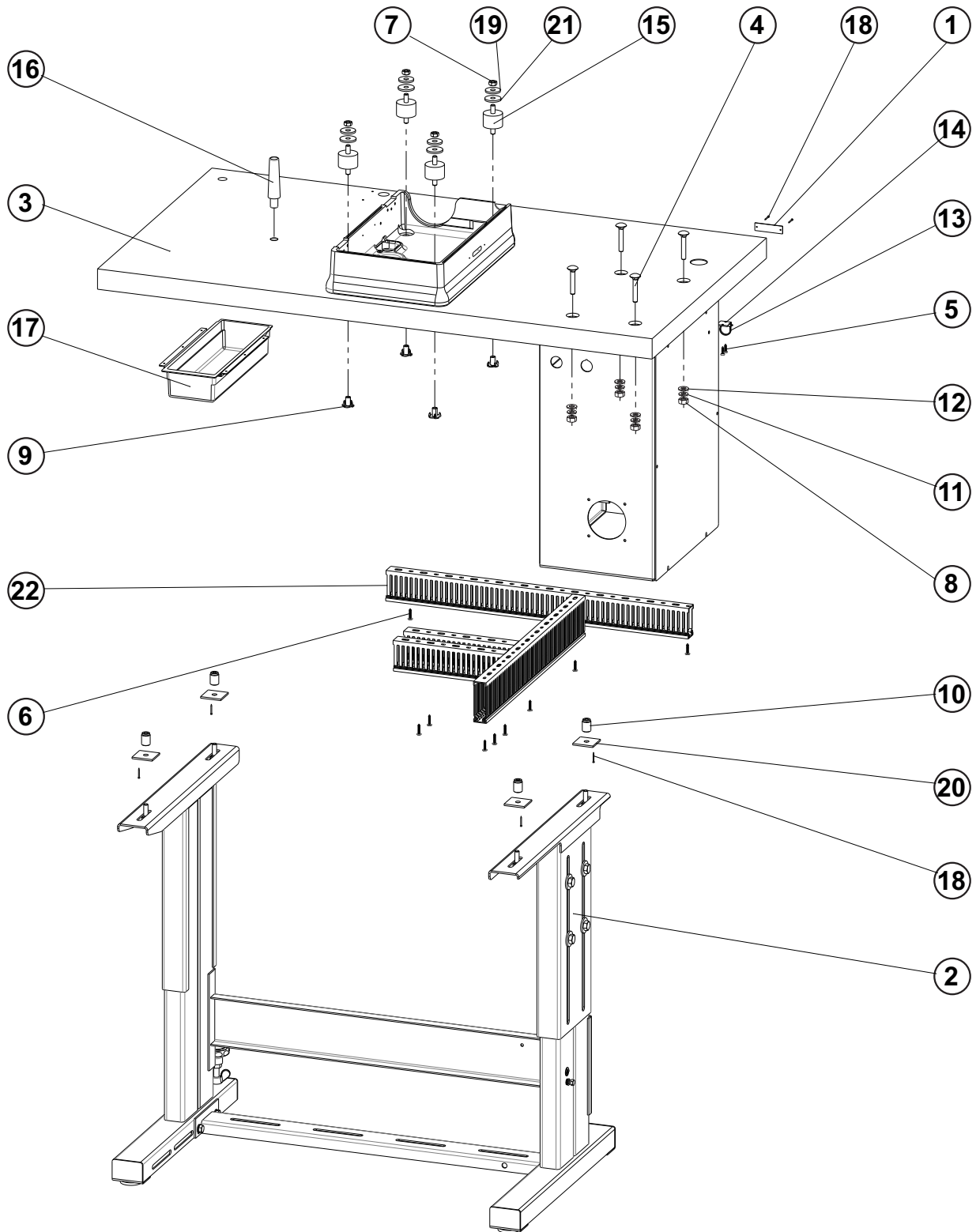
INDEXER COVER ASSEMBLY



THREAD PICK-UP ASSEMBLY



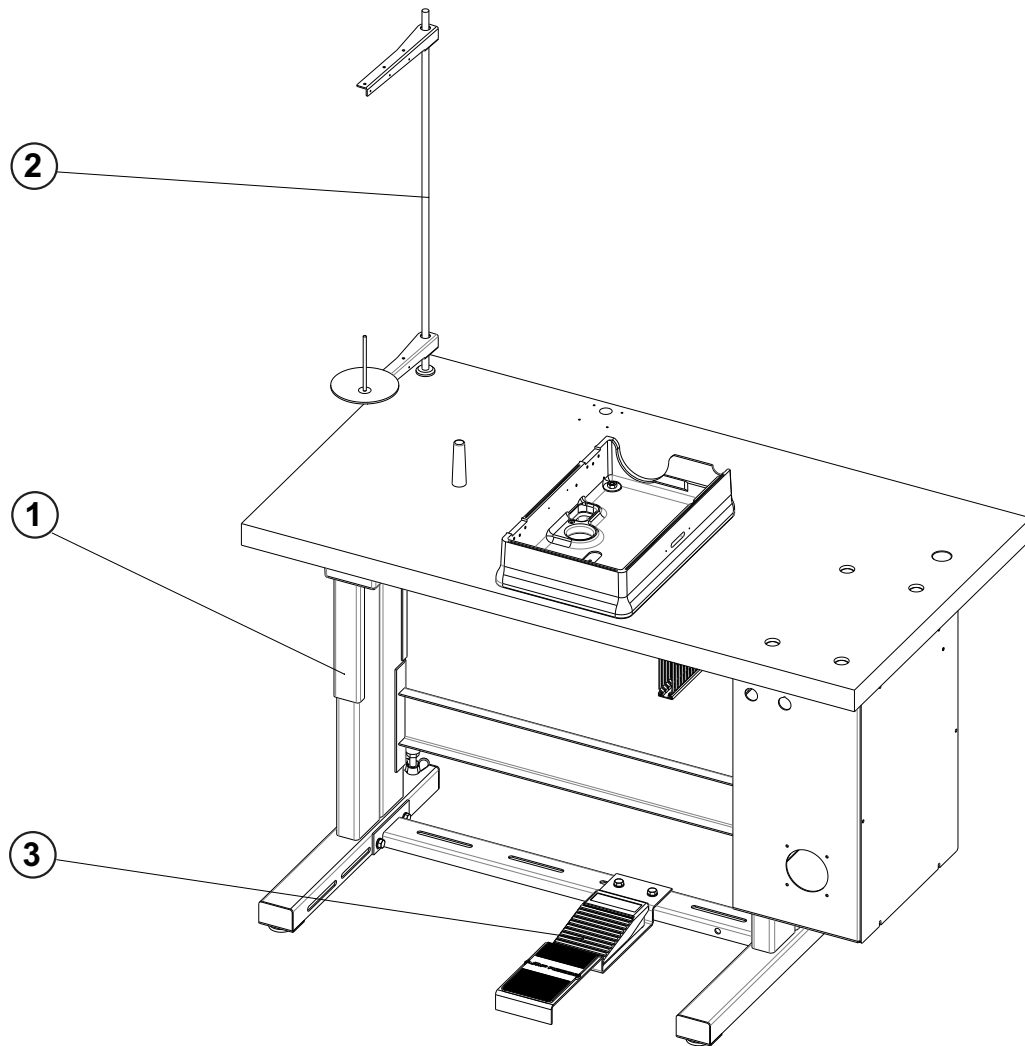
TABLE



TABLE

DET	PART NUMBER	DESCRIPTION	QTY.
01	04.1416.1.003	LABEL	1
02	04.9000.2.123	FRAME KIT ASSY.	1
03	04.9024.0.906	TABLE TOP CROSSWISE ISBH+I 30°	1
04	08.6532.8.050	SCREW M8-50	4
05	08.6652.3.016	SCREW ST3,5-16	2
06	08.6676.3.020	SCREW ST3,5-20	10
07	08.6700.8.000	NUT M8	4
08	08.6702.8.000	NUT M8	4
09	08.6742.8.000	NUT M8	4
10	08.6752.8.000	NUT M8	4
11	08.6802.8.000	SPRING WASHER M8	4
12	08.6852.8.000	WASHER M8	4
13	12.0008.3.023	TY-WRAP	1
14	12.0008.4.058	CLIP	1
15	12.0008.6.801	SHOCK MOUNT	4
16	12.0008.6.900	MACHINE REST TABLE PIN	1
17	12.0008.6.901	BOX	1
18	12.1016.1.000	NAIL	6
19	17.0019.0.441	WASHER	4
20	17.0094.0.200	WASHER	4
21	17.0095.1.272	RUBBER WASHER	4
22	24.0069.9.063	LATCH FOR CABLE PLATE	1

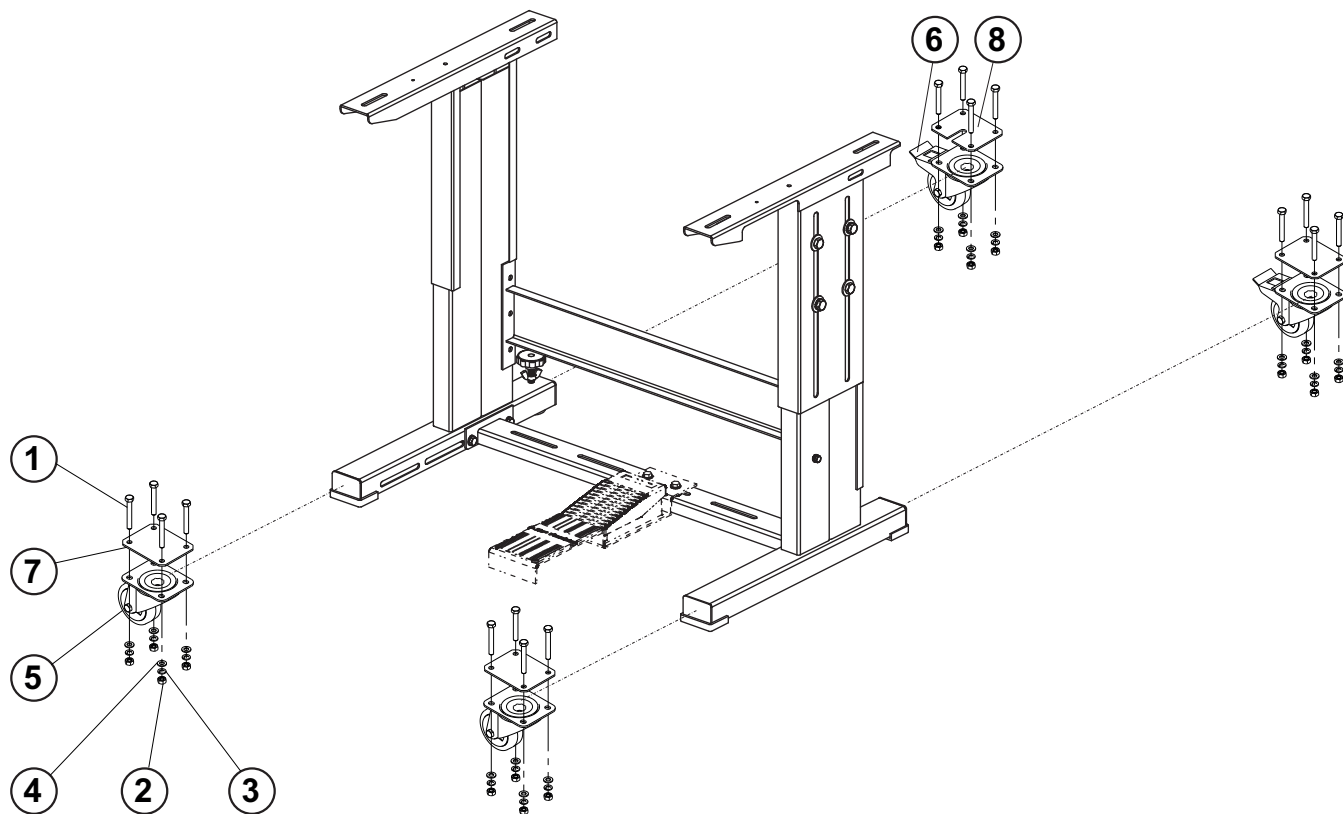
TABLE



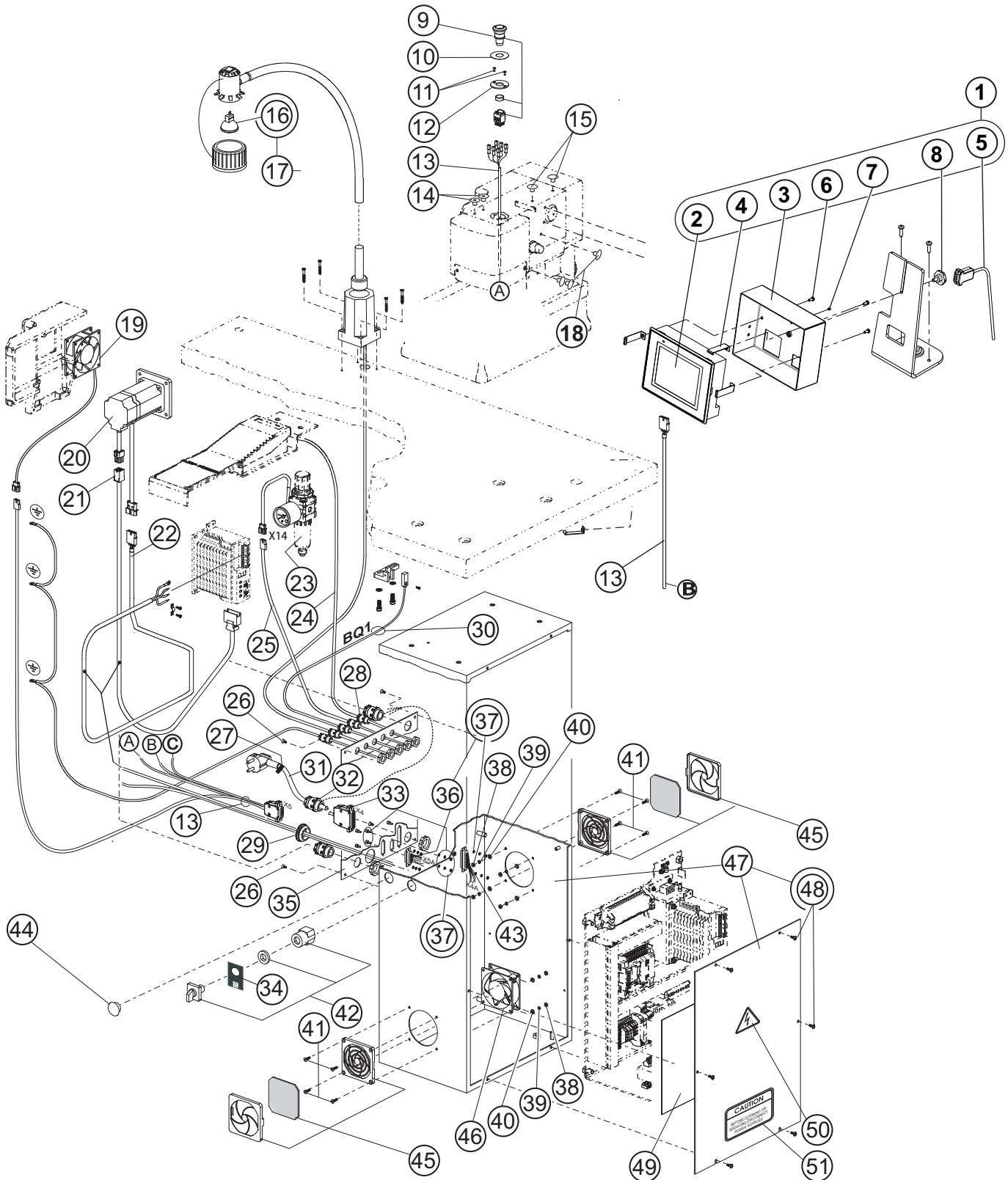
TABLE

DET	PART NUMBER	DESCRIPTION	QTY.
01	04.9024.0.006	FRAME ASSY. - S4001 ISBH+I 30°	1
02	22.0219.0.000	THREAD STAND	1
03	24.0069.9.009	PEDAL ASSY.	1

TABLE - ROLLER KIT - EXTRA PARTS



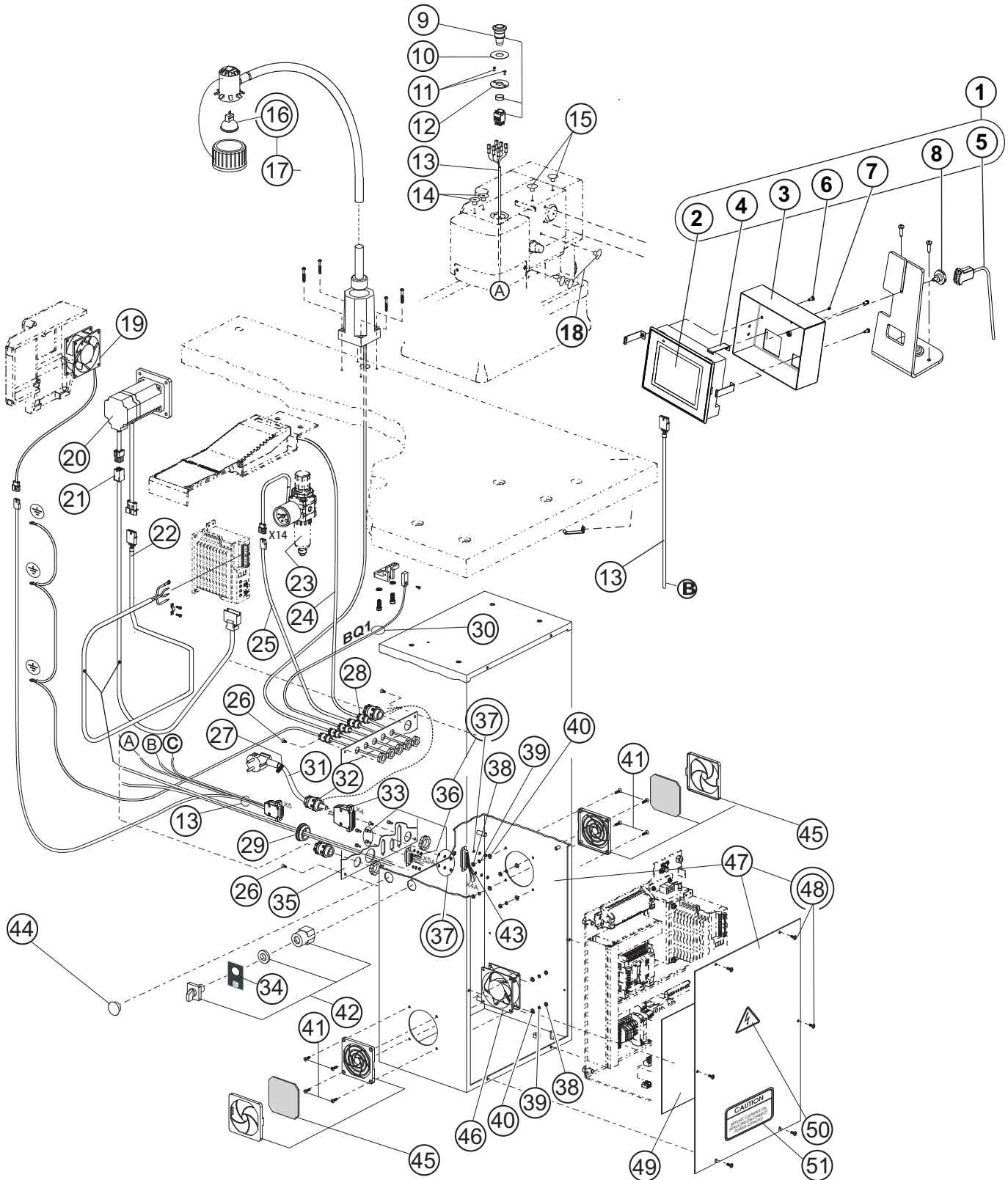
ELECTRICAL I



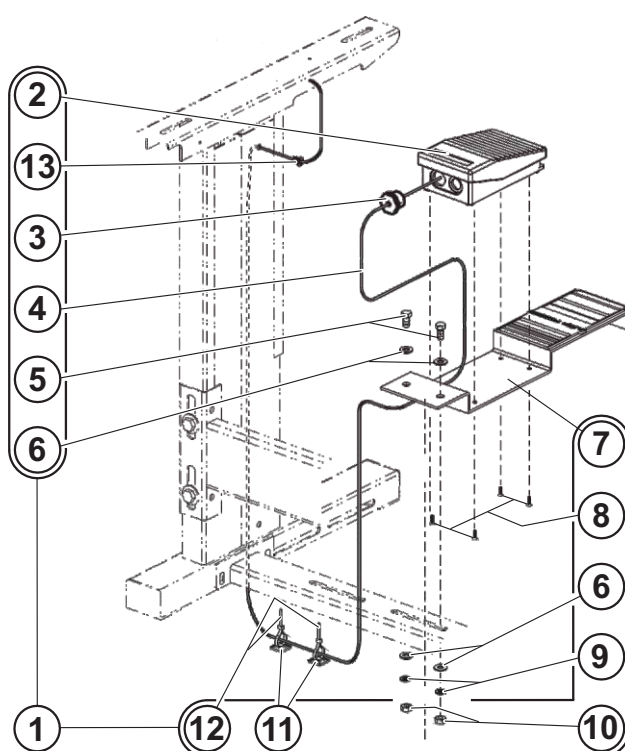
ELECTRICAL I

DET	PART NUMBER	DESCRIPTION	QTY.
01	03.5524.0.050	PANEL KIT OMRON ISBH + I	1
02	24.8001.2.022	TOUCH SCREEN-OMRON	(1)
03	68.0358.0.800	PANEL COVER - OMRON	(1)
04	24.0168.0.000	DISPLAY HOLDER - OMRON	(3)
05	06.2400.0.002	CABLE DISPLAY	(1)
06	08.6032.4.010	SCREW M4-10	(3)
07	08.6662.3.006	SCREW	(1)
08	19.0014.7.003	SCREW-PANEL	(1)
09	12.0010.4.191	EMERGENCY STOP BUTTON	1
10	12.8000.0.047	LABEL	1
11	08.6102.3.008	SCREW	2
12	24.0148.0.000	EMERGENCY STOP COVER	1
13	06.2400.2.950	CABLE X5	1
14	08.6215.4.006	SCREW	2
15	12.0008.4.570	PLUG	(4)
16	12.0010.4.314	LED BULB	(1)
17	12.0008.4.403	LED LAMP KIT	1
18	12.0010.4.094	PLUG	3
19	24.0059.9.069	FAN	1
20	12.0010.4.177	SERVOMOTOR OMRON	1
21	12.0010.4.253	ENCODER CABLE	1
22	12.0010.4.254	MOTOR POWER CABLE	1
23	See Page 3-56	PRESSURE GAUGE	—
24	See Page 3-52	FOOT CABLE	—
25	06.2400.2.961	CABLE X14	1
26	08.6100.4.010	SCREW	4
27	12.8000.0.112	LABEL CABLE	1
28	12.0008.4.207	BUSHING PG7	5
29	12.0008.4.366	PLUG PG 29	1
30	06.2400.2.951	END OF CYCLE SENSOR BQ1	2
31	12.0008.4.885	CABLE FLEXO	1
32	12.0008.4.231	BUSHING PG13,5	1
33	06.2400.2.948	CABLE X4 INDEXER	1
34	12.8000.0.040	LABEL (MAIN SWITCH)	1
35	04.9024.0.653	CONNECTORS PLATE ISBH+I	1
36	06.2400.2.949	CABLE X5A	1
37	12.0008.4.710	SCREW KIT	(3)
38	08.6702.4.000	NUT M4	8
39	08.6802.4.000	WASHER	8
40	08.6852.4.000	WASHER	8
41	08.6100.4.020	SCREW	8
42	12.0008.4.835	SWITCH ON — OFF	1
43	06.2400.2.947	CABLE X4A	1
44	12.0008.4.216	PLUG	1
45	12.0008.4.472	FAN COVER WITH FILTER	2
46	24.0059.9.017	FAN ASSY.*	1

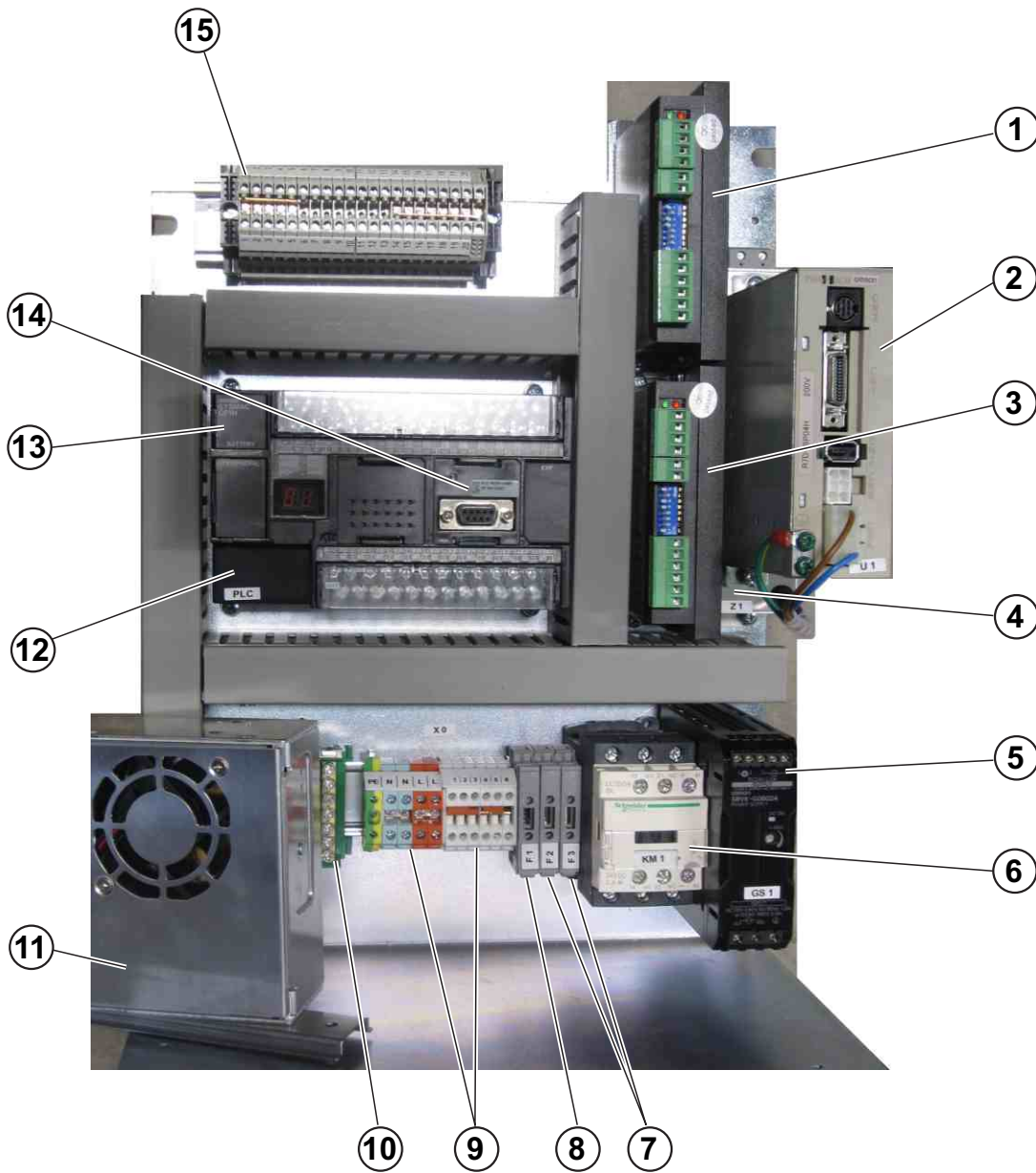
ELECTRICAL I



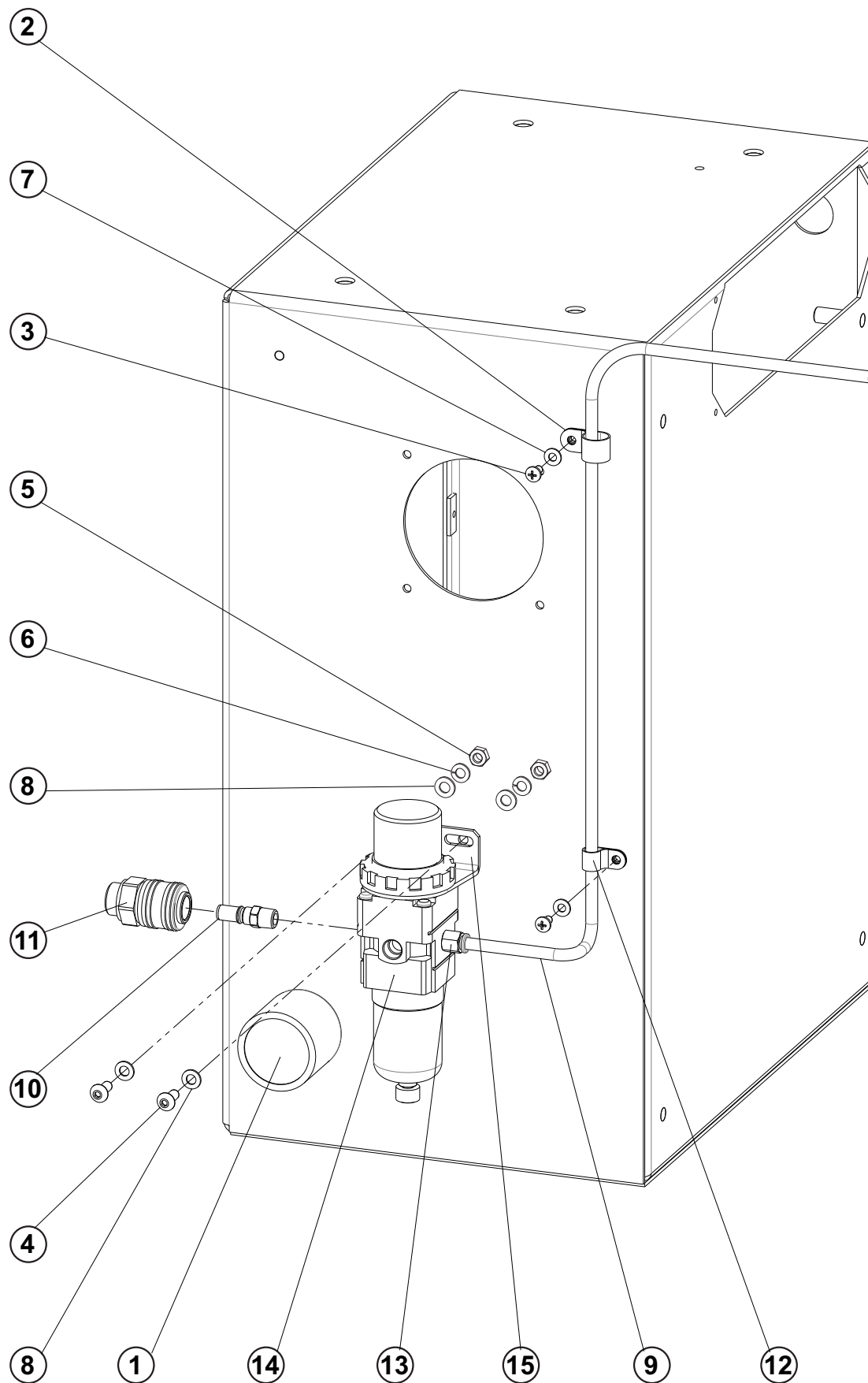
ELECTRICAL II



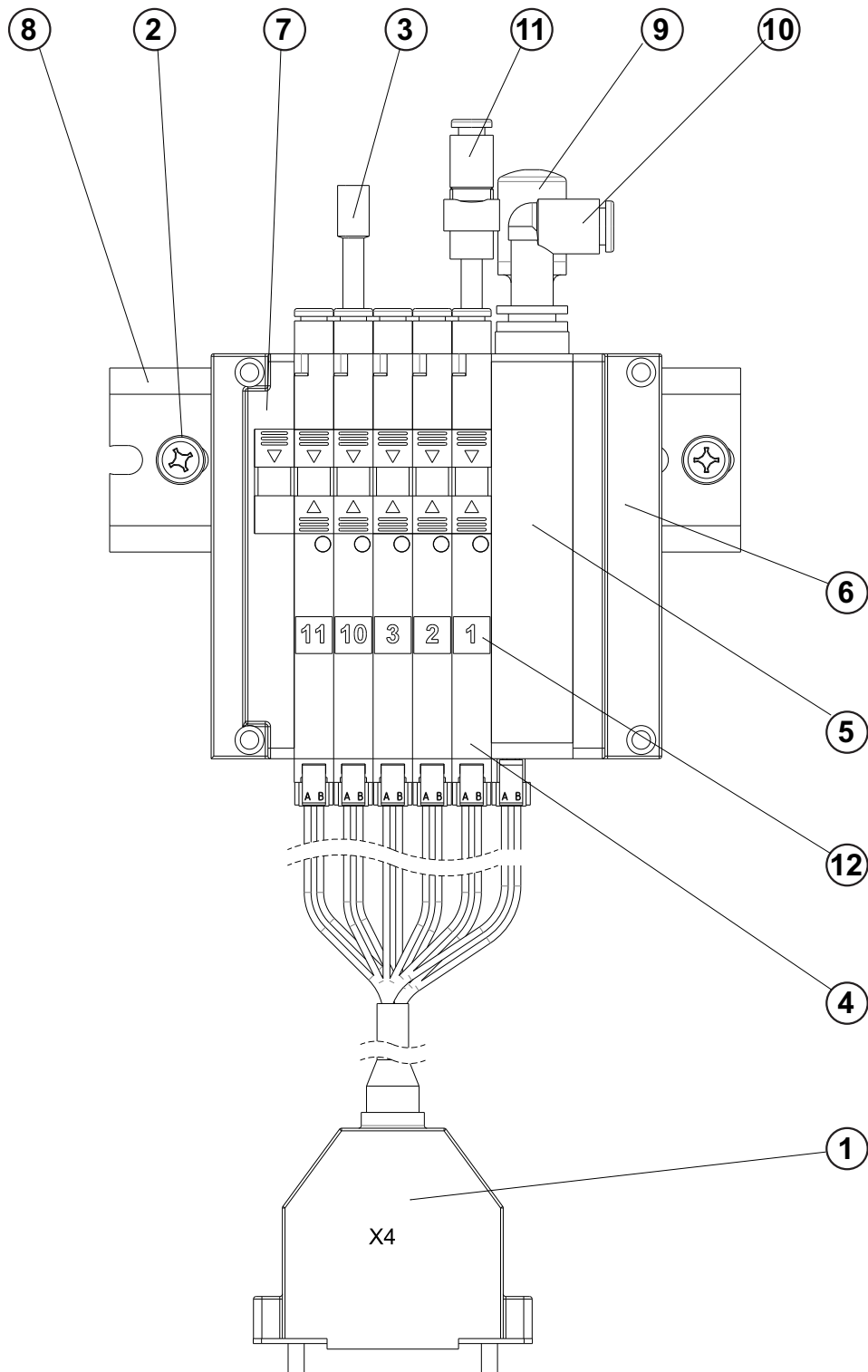
ELECTRICAL III



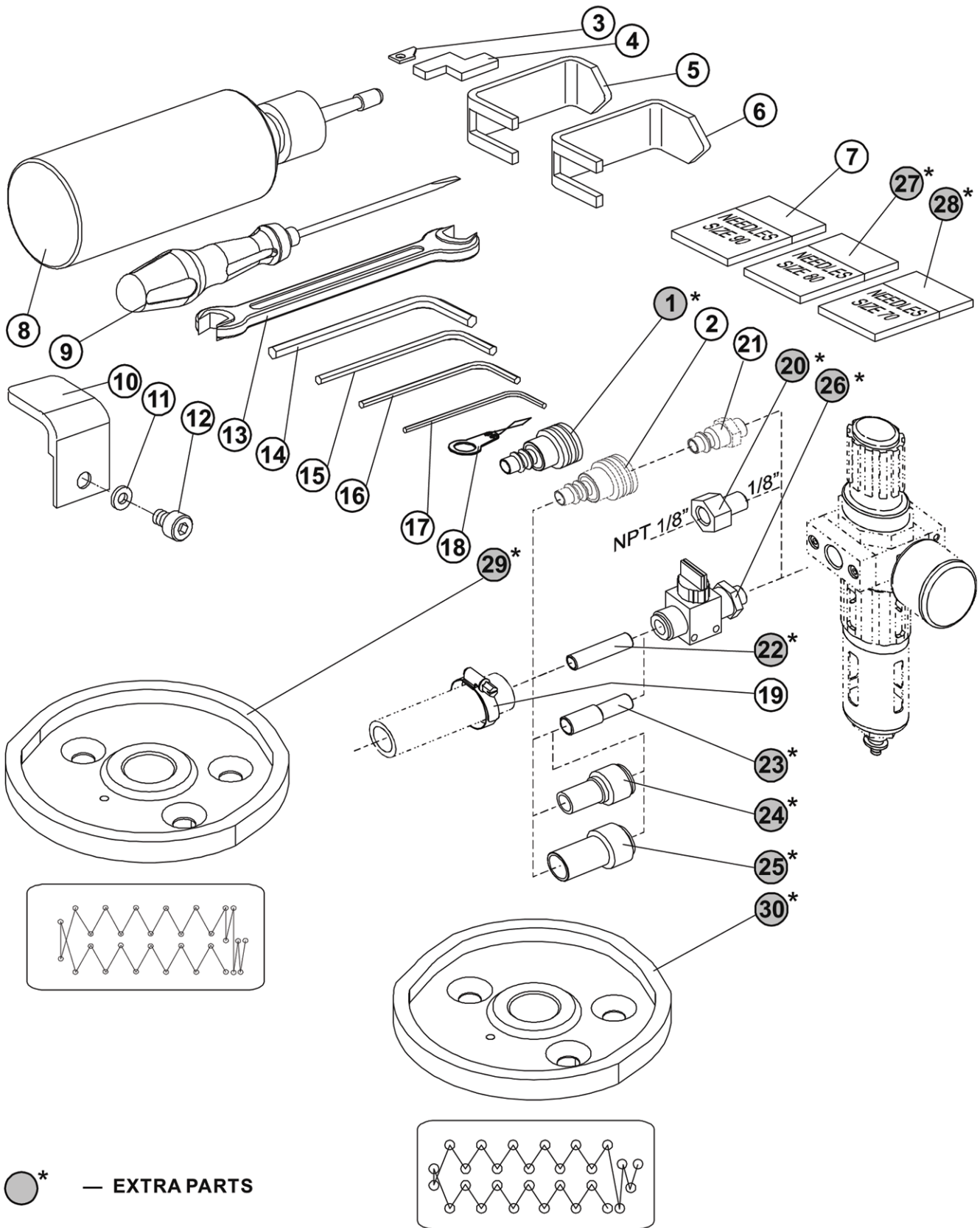
PNEUMATICS



PNEUMATICS

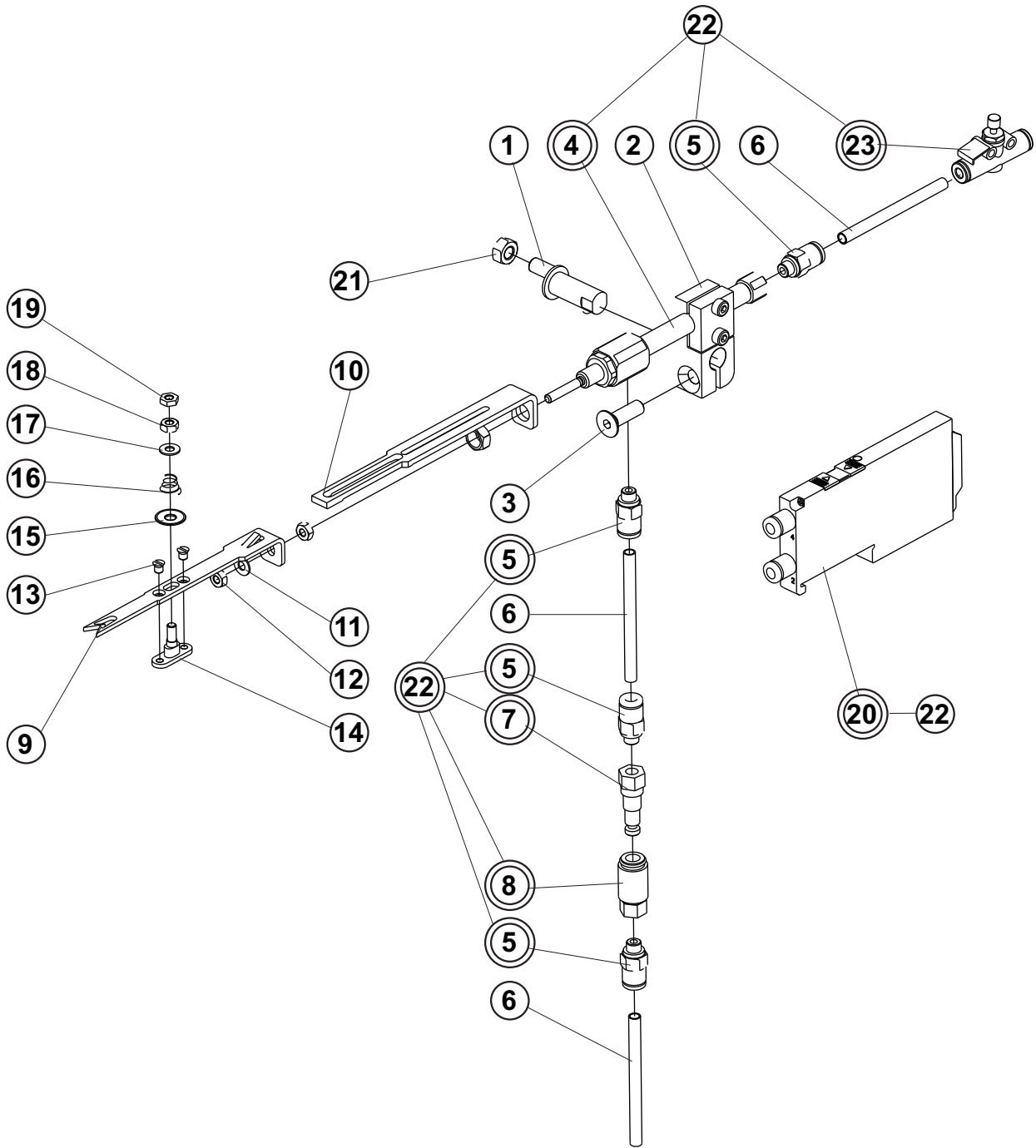


ACCESSORIES



●* — EXTRA PARTS

THREAD PICK-UP - EXTRA PARTS



THREAD PICK-UP - EXTRA PARTS

DET	PART NUMBER	DESCRIPTION	QTY.
01	24.4004.0.000	ECCENTRIC STUD	1
02	24.4001.0.050	CYLINDER HOLDER ASSEMBLY	1
03	08.6100.5.016	SCREW M5-16	1
04	12.0008.3.499	CYLINDER	(1)
05	12.0008.3.409	CONNECTOR	(4)
06	12.0008.3.416	AIR TUBE	3
07	12.0008.3.602	CONNECTOR	(1)
08	12.0008.3.601	CONNECTOR	(1)
09	24.4094.0.000	THREAD CATCHER	1
10	24.4093.0.000	THREAD CATCHER GUIDE	1
11	08.6852.3.000	WASHER M3	1
12	08.6702.3.000	NUT M3	1
13	01.2376.0.000	SCREW-FLAT HEAD	2
14	24.4092.0.000	GUIDE	1
15	10.1029.1.000	TENSION DISC	1
16	17.0026.2.077	SPRING	1
17	08.6850.3.000	WASHER 3,2	1
18	08.6700.3.000	NUT M3	1
19	08.6710.3.000	NUT M3	1
20	12.0008.3.828	5/2 VALVE	(1)
21	08.6700.5.000	NUT M5	1
22	12.0008.3.575	THREAD PICK-UP PNEUMATIC KIT	1
23	12.0010.3.029	SPEED VALVE	(1)

RECOMENDED PARTS

No.	PART NUMBER	DESCRIPTION
01	07.6321.0.025	BRG, BALL CAM F. (INA)#LR605NPPU
02	20.0093.0.000	HOOK TRIMMER
03	20.0094.0.000	TRIMMER KNIFE
04	20.0111.0.000	LOOPER*FIRST
05	20.0112.0.000	LOOPER*SECOND
06	22.2657.0.000	RIGHT SHIFTER ARM SPRING
07	22.2653.0.000	LEFT SHIFTER ARM SPRING
08	23.2356.2.052	USA-KNIFE-1/2/13 M
09	23.2356.2.054	USA-KNIFE-5/8/16 MM
10	23.2356.2.055	USA-KNIFE-3/4/19 M
11	22.0353.0.000	DOUBLE GEAR
12	22.0313.0.000	FEED BRAKE PAD
13	08.6400.3.005	SCREW, H.S. SET, CUP, BLK
14	07.6440.0.018	SPRING, COMP. (LEE)
15	20.0092.0.004	TRIMMER ACTUATOR
16	01.2386.0.000	HEX SCREW 3/16-36 x.5
17	20.0093.2.004	HOOK-TRIMMER
18	23.3106.0.000	JIS FIRST LOOPER HOLDER
19	23.2107.0.000	SECOND LOOPER HOLDER
20	22.0520.0.000	NEEDLE BAR CLAMP
21	22.0530.0.000	NEEDLE BAR CONNECTING LINK
22	24.3077.0.000	MAIN CAM, ISBHMAIN CAM-ISBH
23	07.6440.0.028	SPRING (LEE) #LC-040C-01
24	22.2626.0.000	DRIVE DISK SWITCH SPRING

INDEX

PART NUMBER	PAGE	DET	QTY	PART NUMBER	PAGE	DET	QTY	PART NUMBER	PAGE	DET	QTY
27513603	3-31	25	1	07.6045.0.037	3-29	2	1	08.6000.4.016	3-9	5	4
00.2751.3.602	3-53	51	1	07.6045.0.046	3-5	2	2	08.6000.4.016	3-27	6	6
01.1382.0.000	3-15	1	1	07.6045.0.053	3-27	3	1	08.6000.4.016	3-29	5	4
01.1397.0.000	3-15	2	4	07.6045.0.054	3-25	2	1	08.6000.4.025	3-11	12	2
01.2084.0.000	3-23	1	1	07.6321.0.001	3-19	1	1	08.6000.4.070	3-31	6	4
01.2193.0.000	3-3	1	1	07.6321.0.025	3-11	3	2	08.6000.5.016	3-3	8	1
01.2376.0.000	3-5	1	4	07.6321.0.025	3-17	1	2	08.6000.5.016	3-25	5	3
01.2376.0.000	3-65	13	2	07.6321.0.025	3-66	1	0	08.6000.5.016	3-27	7	4
01.2386.0.000	3-66	16	0	07.6440.0.018	3-11	4	3	08.6000.5.020	3-11	13	2
01.6551.0.000	3-3	2	1	07.6440.0.018	3-66	14	0	08.6000.6.016	3-3	9	2
01.6551.0.000	3-27	1	1	07.6440.0.028	3-11	5	2	08.6000.6.016	3-25	6	2
01.7447.1.000	3-3	3	1	07.6440.0.028	3-17	2	2	08.6000.6.025	3-17	5	1
01.7447.1.000	3-27	2	1	07.6440.0.028	3-66	23	0	08.6000.6.025	3-29	6	2
01.7804.0.000	3-3	4	1	07.6440.0.032	3-9	1	1	08.6000.8.025	3-29	7	2
01.7805.0.000	3-3	5	1	07.6440.0.033	3-11	6	2	08.6000.8.040	3-29	8	1
01.7805.0.000	3-25	1	2	07.6440.0.036	3-15	3	3	08.6002.3.005	3-37	2	2
01.7806.0.000	3-29	1	2	07.6440.0.037	3-19	2	2	08.6002.3.005	3-39	2	10
01.7809.0.000	3-3	6	1	07.6440.0.040	3-9	2	1	08.6002.3.006	3-5	3	4
02.0750.2.100	3-63	27*	—	07.6440.0.041	3-11	7	1	08.6002.3.006	3-37	3	8
02.0750.2.109	3-63	28*	—	07.6440.0.045	3-19	3	1	08.6002.3.008	3-5	4	3
02.0750.2.110	3-3	7	1	07.6440.0.050	3-11	8	1	08.6002.3.010	3-37	4	2
02.0750.2.110	3-63	07	10	07.6440.0.051	3-29	3	1	08.6002.4.006	3-37	5	7
03.5524.0.050	3-51	1	1	07.6600.0.006	3-59	2	1	08.6002.4.008	3-39	3	10
04.1416.1.003	3-45	1	1	08.6000.3.006	3-25	3	1	08.6002.4.012	3-39	4	4
04.9000.2.123	3-45	2	1	08.6000.3.006	3-27	4	1	08.6002.4.022	3-5	5	2
04.9024.0.006	3-47	1	1	08.6000.3.006	3-33	1	1	08.6002.5.010	3-41	1	2
04.9024.0.653	3-51	35	1	08.6000.3.008	3-31	2	2	08.6002.5.012	3-37	6	1
04.9024.0.906	3-45	3	1	08.6000.3.010	3-11	9	1	08.6002.5.012	3-39	5	6
05.1322.0.000	3-63	08	1	08.6000.3.010	3-15	4	1	08.6002.5.012	3-41	2	2
05.1394.0.000	3-31	1	1	08.6000.3.010	3-17	3	1	08.6002.5.014	3-37	7	1
06.2400.0.002	3-51	5	(1)	08.6000.3.016	3-31	3	4	08.6002.5.016	3-39	6	2
06.2400.0.007	3-59	1	1	08.6000.3.040	3-31	4	1	08.6002.5.016	3-41	3	2
06.2400.0.014	3-55	4	(1)	08.6000.4.005	3-9	3	4	08.6002.5.018	3-29	9	2
06.2400.2.947	3-51	43	1	08.6000.4.005	3-11	10	2	08.6002.5.018	3-39	7	2
06.2400.2.948	3-51	33	1	08.6000.4.005	3-29	4	1	08.6002.5.020	3-39	8	4
06.2400.2.948	3-61	1	1	08.6000.4.005	3-63	12	1	08.6002.6.010	3-5	6	2
06.2400.2.949	3-51	36	1	08.6000.4.006	3-25	4	1	08.6002.6.020	3-41	4	2
06.2400.2.950	3-51	13	1	08.6000.4.006	3-31	5	2	08.6002.6.022	3-23	2	4
06.2400.2.951	3-51	30	2	08.6000.4.006	3-33	2	3	08.6012.4.010	3-21	1	1
06.2400.2.956	3-37	1	1	08.6000.4.010	3-9	4	2	08.6032.4.008	3-59	3	2
06.2400.2.958	3-39	1	1	08.6000.4.010	3-27	5	1	08.6032.4.010	3-51	6	(3)
06.2400.2.961	3-51	25	1	08.6000.4.012	3-7	1	1	08.6032.4.010	3-53	48	(6)
06.8800.0.001	3-55	2	(1)	08.6000.4.014	3-11	11	2	08.6100.3.008	3-17	6	2
07.6045.0.009	3-11	1	2	08.6000.4.014	3-15	5	2	08.6100.3.008	3-25	7	1
07.6045.0.037	3-11	2	2	08.6000.4.014	3-17	4	2	08.6100.3.030	3-11	14	2

INDEX

PART NUMBER	PAGE	DET	QTY	PART NUMBER	PAGE	DET	QTY	PART NUMBER	PAGE	DET	QTY
08.6100.4.006	3-9	6	1	08.6400.4.005	3-9	8	1	08.6733.3.000	3-11	19	2
08.6100.4.006	3-23	3	2	08.6400.4.005	3-11	15	6	08.6733.3.000	3-23	6	2
08.6100.4.008	3-31	7	2	08.6400.5.005	3-3	12	1	08.6733.8.000	3-35	2	1
08.6100.4.010	3-9	7	2	08.6400.5.005	3-11	16	1	08.6742.8.000	3-45	9	4
08.6100.4.010	3-51	26	4	08.6400.5.005	3-25	10	2	08.6752.8.000	3-45	10	4
08.6100.4.012	3-19	4	1	08.6400.5.005	3-29	13	2	08.6800.4.000	3-11	20	2
08.6100.4.012	3-55	8	(4)	08.6400.5.008	3-29	14	2	08.6800.4.000	3-15	9	2
08.6100.4.020	3-51	41	8	08.6400.5.010	3-25	11	2	08.6800.4.000	3-27	12	2
08.6100.5.008	3-35	1	2	08.6400.5.010	3-27	10	1	08.6802.3.000	3-37	16	2
08.6100.5.010	3-19	5	1	08.6402.3.006	3-5	9	2	08.6802.4.000	3-39	12	4
08.6100.5.012	3-5	7	3	08.6402.4.005	3-37	13	2	08.6802.4.000	3-51	39	8
08.6100.5.012	3-21	2	5	08.6402.5.005	3-39	9	2	08.6802.5.000	3-37	17	2
08.6100.5.016	3-31	8	7	08.6532.8.050	3-45	4	4	08.6802.5.000	3-39	13	11
08.6100.5.016	3-65	3	1	08.6652.3.016	3-45	5	2	08.6802.5.000	3-41	6	4
08.6100.5.020	3-15	6	2	08.6662.3.006	3-51	7	(1)	08.6802.5.000	3-59	6	2
08.6100.5.020	3-21	3	1	08.6676.3.020	3-45	6	10	08.6802.6.000	3-23	7	4
08.6100.5.020	3-29	10	3	08.6676.4.025	3-61	2	2	08.6802.6.000	3-41	7	4
08.6100.6.035	3-25	8	1	08.6700.3.000	3-65	18	1	08.6802.8.000	3-45	11	4
08.6102.3.008	3-29	11	2	08.6700.5.000	3-17	9	2	08.6802.8.000	3-49	3	16
08.6102.3.008	3-51	11	2	08.6700.5.000	3-19	6	1	08.6802.8.000	3-55	9	(2)
08.6102.5.008	3-37	8	2	08.6700.5.000	3-21	6	2	08.6832.4.000	3-21	7	1
08.6102.5.012	3-37	9	2	08.6700.5.000	3-29	15	3	08.6842.5.000	3-39	14	2
08.6102.5.016	3-43	1	1	08.6700.5.000	3-65	21	1	08.6842.5.000	3-41	8	6
08.6112.3.008	3-23	4	8	08.6700.8.000	3-11	17	1	08.6850.3.000	3-27	13	1
08.6112.3.016	3-23	5	2	08.6700.8.000	3-15	7	1	08.6850.3.000	3-65	17	1
08.6132.3.008	3-37	10	4	08.6700.8.000	3-45	7	4	08.6850.4.000	3-17	10	1
08.6200.4.008	3-17	7	1	08.6702.3.000	3-43	2	1	08.6850.4.000	3-25	12	1
08.6200.4.008	3-31	9	2	08.6702.3.000	3-65	12	1	08.6850.4.000	3-27	14	2
08.6200.4.016	3-27	8	2	08.6702.4.000	3-7	2	1	08.6850.4.000	3-29	16	4
08.6200.5.008	3-29	12	1	08.6702.4.000	3-37	14	1	08.6850.4.000	3-33	3	1
08.6200.5.012	3-21	4	6	08.6702.4.000	3-51	38	8	08.6850.4.000	3-63	11	1
08.6200.5.020	3-21	5	1	08.6702.5.000	3-37	15	1	08.6850.5.000	3-19	7	1
08.6202.4.010	3-37	11	2	08.6702.5.000	3-39	10	1	08.6850.5.000	3-29	17	3
08.6202.5.012	3-59	4	2	08.6702.5.000	3-59	5	2	08.6850.5.000	3-31	10	4
08.6202.5.016	3-5	8	2	08.6702.8.000	3-45	8	4	08.6850.6.000	3-9	9	1
08.6202.5.020	3-37	12	2	08.6702.8.000	3-49	2	16	08.6850.6.000	3-25	13	2
08.6215.4.006	3-51	14	2	08.6702.8.000	3-55	10	(2)	08.6850.6.000	3-29	18	2
08.6312.8.020	3-55	5	(2)	08.6710.3.000	3-65	19	1	08.6850.8.000	3-11	21	1
08.6312.8.060	3-49	1	16	08.6710.5.000	3-11	18	2	08.6850.8.000	3-15	10	1
08.6400.3.004	3-25	9	1	08.6710.5.000	3-15	8	2	08.6852.3.000	3-23	8	2
08.6400.3.005	3-3	10	4	08.6710.6.000	3-27	11	1	08.6852.3.000	3-37	18	2
08.6400.3.005	3-66	13	0	08.6712.3.000	3-5	10	2	08.6852.3.000	3-65	11	1
08.6400.4.004	3-3	11	2	08.6712.4.000	3-41	5	2	08.6852.4.000	3-39	15	5
08.6400.4.004	3-17	8	1	08.6712.6.000	3-5	11	1	08.6852.4.000	3-51	40	8
08.6400.4.004	3-27	9	1	08.6732.5.000	3-39	11	1	08.6852.4.000	3-59	7	2

INDEX

PART NUMBER	PAGE	DET	QTY	PART NUMBER	PAGE	DET	QTY	PART NUMBER	PAGE	DET	QTY
08.6852.5.000	3-5	12	2	12.0008.3.831	3-61	7	1	12.0010.3.027	3-43	5	1
08.6852.5.000	3-37	19	2	12.0008.3.832	3-61	8	1	12.0010.3.028	3-7	5	2
08.6852.5.000	3-39	16	10	12.0008.4.050	3-57	10	1	12.0010.3.028	3-43	6	1
08.6852.5.000	3-59	8	4	12.0008.4.052	3-21	8	1	12.0010.3.029	3-29	21	1
08.6852.6.000	3-7	3	1	12.0008.4.058	3-45	14	1	12.0010.3.029	3-43	7	1
08.6852.8.000	3-45	12	4	12.0008.4.058	3-55	11	(2)	12.0010.3.029	3-65	23	(1)
08.6852.8.000	3-49	4	16	12.0008.4.072	3-55	12	(2)	12.0010.3.030	3-61	9	1
08.6852.8.000	3-55	6	(4)	12.0008.4.089	3-39	17	1	12.0010.3.031	3-61	10	1
08.6887.5.000	3-9	10	1	12.0008.4.197	3-21	9	2	12.0010.3.036	3-5	14	1
08.6892.6.000	3-23	9	4	12.0008.4.207	3-51	28	5	12.0010.3.080	3-5	15	—
08.6892.6.000	3-41	9	2	12.0008.4.214	3-55	13	(1)	12.0010.3.080	3-7	6	—
10.1029.1.000	3-65	15	1	12.0008.4.216	3-51	44	1	12.0010.3.080	3-27	18	—
12.0008.3.023	3-33	4	1	12.0008.4.231	3-51	32	1	12.0010.3.080	3-29	22	—
12.0008.3.023	3-37	20	1	12.0008.4.280	3-17	11	1	12.0010.3.080	3-37	22	1
12.0008.3.023	3-45	13	1	12.0008.4.280	3-59	12	1	12.0010.3.080	3-43	8	—
12.0008.3.081	3-63	20*	1	12.0008.4.296	3-55	3	(1)	12.0010.3.097	3-59	13	1
12.0008.3.251	3-63	19	1	12.0008.4.366	3-51	29	1	12.0010.3.119	3-37	23	1
12.0008.3.409	3-65	5	(4)	12.0008.4.378	3-53	50	1	12.0010.3.137	3-59	14	1
12.0008.3.413	3-29	19	1	12.0008.4.403	3-51	17	1	12.0010.3.138	3-59	15	1
12.0008.3.415	3-59	9	—	12.0008.4.472	3-51	45	2	12.0010.3.159	3-61	11	1
12.0008.3.416	3-5	13	—	12.0008.4.570	3-51	15	(4)	12.0010.3.194	3-5	16	1
12.0008.3.416	3-7	4	—	12.0008.4.664	3-57	7	2	12.0010.3.195	3-5	17	1
12.0008.3.416	3-27	15	—	12.0008.4.665	3-57	8	1	12.0010.4.013	3-3	13	1
12.0008.3.416	3-43	3	—	12.0008.4.710	3-51	37	(3)	12.0010.4.013	3-27	19	1
12.0008.3.416	3-65	6	3	12.0008.4.833	3-57	6	1	12.0010.4.071	3-57	14	1
12.0008.3.420	3-59	10	1	12.0008.4.835	3-51	42	1	12.0010.4.093	3-37	24	1
12.0008.3.426	3-61	3	1	12.0008.4.885	3-51	31	1	12.0010.4.093	3-39	19	1
12.0008.3.433	3-27	16	1	12.0008.6.001	3-63	09	1	12.0010.4.094	3-51	18	3
12.0008.3.463	3-63	26*	—	12.0008.6.100	3-63	17	1	12.0010.4.163	3-57	13	1
12.0008.3.464	3-63	22*	—	12.0008.6.101	3-63	15	1	12.0010.4.168	3-57	5	1
12.0008.3.465	3-63	25*	—	12.0008.6.102	3-63	14	1	12.0010.4.177	3-51	20	1
12.0008.3.466	3-63	23*	—	12.0008.6.105	3-63	18	1	12.0010.4.191	3-51	9	1
12.0008.3.467	3-63	24*	—	12.0008.6.109	3-63	13	1	12.0010.4.249	3-57	1	—
12.0008.3.499	3-43	4	1	12.0008.6.112	3-63	16	1	12.0010.4.249	3-57	3	—
12.0008.3.499	3-65	4	(1)	12.0008.6.527	3-49	5	2	12.0010.4.251	3-57	4	1
12.0008.3.575	3-65	22	1	12.0008.6.528	3-49	6	2	12.0010.4.253	3-51	21	1
12.0008.3.601	3-65	8	(1)	12.0008.6.531	3-37	21	1	12.0010.4.254	3-51	22	1
12.0008.3.602	3-65	7	(1)	12.0008.6.531	3-39	18	1	12.0010.4.314	3-51	16	(1)
12.0008.3.607	3-63	01*	1*	12.0008.6.532	3-41	10	1	12.0010.4.350	3-57	11	1
12.0008.3.608	3-59	11	1	12.0008.6.800	3-17	12	1	12.1010.2.003	3-29	23	1
12.0008.3.608	3-63	02	1	12.0008.6.801	3-45	15	4	12.1011.0.001	3-29	24	1
12.0008.3.828	3-61	4	5	12.0008.6.900	3-45	16	1	12.1016.0.002	3-21	10	4
12.0008.3.828	3-65	20	(1)	12.0008.6.901	3-45	17	1	12.1016.0.002	3-31	11	2
12.0008.3.829	3-61	5	1	12.0010.3.027	3-27	17	2	12.1016.1.000	3-45	18	6
12.0008.3.830	3-61	6	1	12.0010.3.027	3-29	20	1	12.1045.0.004	3-7	7	1

INDEX

PART NUMBER	PAGE	DET	QTY	PART NUMBER	PAGE	DET	QTY	PART NUMBER	PAGE	DET	QTY
12.1045.0.004	3-27	20	1	17.0095.1.272	3-45	21	4	22.0097.0.000	3-19	8	1
12.1045.0.005	3-7	8	1	17.0095.1.329	3-33	8	1	22.0100.0.000	3-11	32	4
12.1045.0.007	3-37	25	1	17.0097.5.174	3-31	14	2	22.0100.0.000	3-15	21	3
12.1045.0.009	3-11	22	1	17.0097.5.174	3-41	11	1	22.0100.0.000	3-17	23	4
12.1045.2.001	3-3	14	1	19.0014.7.003	3-51	8	(1)	22.0104.0.000	3-33	9	1
12.1045.2.001	3-25	14	1	20.0092.0.004	3-7	9	1	22.0105.0.000	3-15	22	1
12.2010.1.002	3-15	11	2	20.0092.0.004	3-66	15	0	22.0106.0.000	3-19	9	2
12.2050.0.003	3-3	15	1	20.0093.0.000	3-66	2	0	22.0107.0.000	3-33	10	1
12.2050.0.005	3-25	15	1	20.0093.2.004	3-7	10	1	22.0108.0.000	3-33	11	1
12.2050.0.007	3-35	3	1	20.0093.2.004	3-66	17	0	22.0110.0.000	3-11	33	1
12.2050.0.007	3-37	26	2	20.0094.0.000	3-15	12	1	22.0110.0.000	3-17	24	1
12.2060.0.006	3-35	4	2	20.0094.0.000	3-63	03	1	22.0114.0.000	3-11	34	1
12.2070.1.019	3-5	18	1	20.0094.0.000	3-66	3	0	22.0120.0.000	3-33	12	1
12.2070.1.057	3-37	27	1	20.0111.0.000	3-15	13	1	22.0121.0.000	3-11	35	1
12.2070.1.057	3-39	20	1	20.0111.0.000	3-66	4	0	22.0137.0.000	3-19	10	2
12.2099.5.002	3-35	5	5	20.0112.0.000	3-15	14	1	22.0143.0.000	3-23	10	4
12.4030.0.002	3-25	16	1	20.0112.0.000	3-66	5	0	22.0153.0.000	3-25	19	2
12.5050.2.009	3-29	25	1	22.0006.0.000	3-25	18	1	22.0161.0.000	3-27	23	1
12.8000.0.040	3-51	34	1	22.0008.0.000	3-17	14	1	22.0164.0.000	3-5	20	1
12.8000.0.047	3-29	26	1	22.0009.0.050	3-17	15	1	22.0175.0.000	3-3	18	1
12.8000.0.047	3-51	10	1	22.0020.0.000	3-17	16	1	22.0182.0.000	3-19	11	2
12.8000.0.112	3-51	27	1	22.0021.0.000	3-11	26	1	22.0183.0.000	3-11	36	1
12.8000.0.174	3-53	49	1	22.0021.0.000	3-15	15	1	22.0183.0.000	3-15	23	1
12.8000.0.438	3-31	12	1	22.0022.0.000	3-11	27	1	22.0183.0.000	3-17	25	1
12.8000.0.446	3-61	12	1	22.0022.0.000	3-15	16	1	22.0184.0.000	3-11	37	3
12.8000.1.041	3-31	13	1	22.0023.0.000	3-15	17	1	22.0186.0.000	3-11	38	1
12.8000.1.042	3-21	11	1	22.0024.0.000	3-15	18	1	22.0195.0.000	3-3	19	1
12.8000.1.047	3-21	12	1	22.0026.0.000	3-11	28	1	22.0208.0.000	3-11	39	1
15.1431.0.100	3-37	28	2	22.0027.0.000	3-17	17	1	22.0209.0.000	3-63	04	1
15.1436.0.100	3-37	29	4	22.0028.0.000	3-17	18	2	22.0213.0.000	3-63	10	1
17.0011.1.149	3-11	23	3	22.0029.0.000	3-17	19	2	22.0214.0.000	3-17	26	1
17.0011.1.149	3-25	17	6	22.0030.0.000	3-17	20	1	22.0219.0.000	3-47	2	1
17.0019.0.441	3-45	19	4	22.0031.0.000	3-11	29	2	22.0223.0.000	3-5	21	1
17.0019.0.517	3-11	24	1	22.0031.0.000	3-15	19	2	22.0224.0.000	3-5	22	1
17.0019.1.062	3-17	13	1	22.0032.0.000	3-11	30	2	22.0228.0.000	3-11	40	1
17.0019.2.057	3-11	25	1	22.0046.0.000	3-27	21	1	22.0229.0.000	3-33	13	2
17.0026.2.077	3-3	16	1	22.0049.0.000	3-11	31	1	22.0230.0.000	3-3	20	2
17.0026.2.077	3-65	16	1	22.0054.0.000	3-29	28	1	22.0232.0.000	3-11	41	1
17.0027.1.799	3-33	5	1	22.0057.0.000	3-31	15	1	22.0232.0.000	3-15	24	1
17.0031.0.460	3-5	19	2	22.0058.0.000	3-29	29	1	22.0233.0.000	3-15	25	1
17.0082.6.000	3-33	6	1	22.0062.0.000	3-29	30	1	22.0239.0.000	3-3	21	2
17.0082.8.017	3-3	17	2	22.0063.0.000	3-17	21	1	22.0300.0.000	3-25	20	1
17.0082.8.082	3-29	27	1	22.0064.0.000	3-15	20	1	22.0305.0.000	3-11	42	1
17.0094.0.200	3-45	20	4	22.0064.0.000	3-17	22	2	22.0309.0.050	3-11	43	1
17.0094.5.310	3-33	7	1	22.0091.0.000	3-27	22	1	22.0312.0.000	3-11	44	1

INDEX

PART NUMBER	PAGE	DET	QTY	PART NUMBER	PAGE	DET	QTY	PART NUMBER	PAGE	DET	QTY
22.0313.0.000	3-66	12	0	22.2653.0.000	3-9	15	1	24.0044.0.000	3-29	32	1
22.0315.0.000	3-11	45	1	22.2653.0.000	3-66	7	0	24.0048.0.000	3-3	32	1
22.0320.0.000	3-11	46	1	22.2655.0.000	3-9	16	1	24.0049.0.000	3-13	52	2
22.0325.0.000	3-13	47	1	22.2656.0.000	3-9	17	1	24.0050.1.000	3-7	15	1
22.0336.0.000	3-13	48	1	22.2657.0.000	3-9	18	1	24.0051.0.066	3-25	29	1
22.0353.0.000	3-13	49	3	22.2657.0.000	3-66	6	0	24.0055.0.000	3-17	28	1
22.0353.0.000	3-66	11	0	22.2664.0.000	3-9	19	1	24.0059.9.017	3-51	46	1
22.0354.0.000	3-13	50	1	22.2665.0.000	3-9	20	1	24.0059.9.069	3-51	19	1
22.0370.0.000	3-13	51	1	22.3003.0.000	3-19	23	1	24.0061.0.000	3-27	34	1
22.0400.0.000	3-9	11	1	22.3022.0.000	3-23	12	1	24.0061.1.000	3-13	53	1
22.0405.0.000	3-9	12	1	22.3034.0.000	3-23	13	1	24.0062.0.000	3-27	35	1
22.0408.1.000	3-23	11	1	22.3068.0.000	3-23	14	4	24.0063.0.000	3-27	36	1
22.0520.0.000	3-3	22	1	22.3069.0.000	3-19	24	1	24.0066.0.000	3-15	32	2
22.0520.0.000	3-66	20	0	22.3219.0.000	3-25	22	1	24.0067.0.000	3-31	16	1
22.0525.0.050	3-3	23	1	22.6002.0.000	3-29	31	1	24.0068.0.000	3-31	17	1
22.0530.0.000	3-3	24	1	22.8400.0.000	3-25	23	1	24.0069.9.009	3-47	3	1
22.0530.0.000	3-66	21	0	23.2106.0.000	3-15	30	1	24.0069.9.009	3-55	1	1
22.0535.0.100	3-3	25	1	23.2107.0.000	3-15	31	1	24.0069.9.063	3-45	22	1
22.0540.0.000	3-3	26	1	23.2107.0.000	3-66	19	0	24.0080.0.000	3-7	16	1
22.0541.0.000	3-3	27	1	23.2356.2.052	3-66	8	0	24.0097.0.000	3-55	7	(1)
22.0542.0.000	3-3	28	1	23.2356.2.054	3-66	9	0	24.0100.0.000	3-3	33	1
22.0545.0.000	3-3	29	1	23.2356.2.055	3-66	10	0	24.0106.1.000	3-29	33	1
22.0545.0.000	3-25	21	1	23.3106.0.000	3-66	18	0	24.0108.0.000	3-29	34	1
22.1010.0.000	3-21	13	2	24.0001.0.000	3-3	30	1	24.0111.0.000	3-21	15	1
22.1415.0.050	3-27	24	1	24.0002.0.000	3-3	31	1	24.0112.0.000	3-31	18	1
22.1422.0.000	3-27	25	1	24.0002.0.000	3-25	24	1	24.0115.1.000	3-23	15	1
22.1436.0.000	3-27	26	2	24.0003.0.000	3-7	11	1	24.0119.0.050	3-29	35	1
22.2410.0.000	3-15	26	1	24.0004.0.000	3-7	12	1	24.0126.0.000	3-13	54	1
22.2425.0.050	3-15	27	1	24.0005.0.000	3-7	13	1	24.0127.0.000	3-13	55	1
22.2440.0.000	3-15	28	2	24.0006.1.000	3-7	14	1	24.0139.0.000	3-33	14	1
22.2442.0.000	3-15	29	2	24.0009.0.000	3-27	27	1	24.0140.0.000	3-13	56	1
22.2607.0.000	3-19	12	1	24.0010.0.000	3-27	28	1	24.0141.0.000	3-33	15	1
22.2610.0.000	3-19	13	1	24.0011.0.000	3-27	29	1	24.0148.0.000	3-29	36	1
22.2626.0.000	3-19	14	1	24.0014.0.000	3-27	30	1	24.0148.0.000	3-51	12	1
22.2626.0.000	3-66	24	0	24.0016.0.000	3-27	31	1	24.0154.0.000	3-31	19	1
22.2627.0.000	3-19	15	2	24.0018.0.000	3-25	25	1	24.0168.0.000	3-51	4	(3)
22.2631.0.000	3-19	16	1	24.0019.0.000	3-25	26	1	24.0170.0.000	3-49	7	3
22.2633.0.000	3-19	17	1	24.0020.0.000	3-25	27	1	24.0171.0.000	3-49	8	1
22.2635.0.000	3-19	18	1	24.0024.0.000	3-63	06	1	24.0351.0.000	3-13	57	1
22.2637.0.000	3-19	19	1	24.0027.0.000	3-25	28	1	24.0500.0.000	3-3	34	1
22.2638.0.000	3-19	20	1	24.0030.0.000	3-63	05	1	24.0510.0.000	3-3	35	1
22.2639.0.000	3-19	21	1	24.0033.0.000	3-17	27	1	24.0546.0.000	3-3	36	1
22.2640.0.050	3-19	22	1	24.0037.0.000	3-27	32	1	24.1000.0.000	3-25	30	1
22.2651.0.000	3-9	13	1	24.0038.0.000	3-21	14	1	24.1430.1.000	3-27	37	1
22.2652.0.000	3-9	14	1	24.0039.1.000	3-27	33	1	24.2035.0.000	3-13	58	1

INDEX

PART NUMBER	PAGE	DET	QTY	PART NUMBER	PAGE	DET	QTY	PART NUMBER	PAGE	DET	QTY
24.2400.0.000	3-25	31	1	24.4119.0.000	3-37	41	1				
24.2630.1.000	3-19	25	1	24.4120.0.000	3-37	42	1				
24.3055.5.000	3-23	16	1	24.4121.0.000	3-37	41	1				
24.3070.0.000	3-19	26	1	24.4122.0.000	3-37	44	1				
24.3071.0.000	3-9	21	1	24.4123.1.000	3-37	45	1				
24.3072.0.000	3-9	22	1	24.4124.0.000	3-37	46	1				
24.3073.0.000	3-9	23	1	24.4126.0.000	3-37	47	1				
24.3074.0.000	3-9	24	2	24.4127.0.000	3-37	48	1				
24.3075.0.000	3-9	25	1	24.4129.0.000	3-39	21	1				
24.3076.1.000	3-19	27	1	24.4130.0.000	3-39	22	1				
24.3077.0.000	3-19	28	1	24.4131.0.000	3-39	23	1				
24.3077.0.000	3-66	22	0	24.4132.0.000	3-39	24	1				
24.3079.0.000	3-63	29*	—	24.4133.0.000	3-39	25	1				
24.3080.0.000	3-63	30*	—	24.4134.0.000	3-39	26	1				
24.3093.0.000	3-5	23	1	24.4135.0.000	3-39	27	1				
24.3094.0.000	3-5	24	1	24.4136.0.000	3-39	28	1				
24.3095.0.000	3-5	25	1	24.4137.0.000	3-39	29	1				
24.3096.0.000	3-5	26	1	24.4138.0.000	3-39	30	1				
24.3097.0.000	3-5	27	1	24.4139.0.000	3-41	12	1				
24.3098.0.000	3-5	28	1	24.4140.0.000	3-41	13	1				
24.3099.0.000	3-23	17	2	24.4141.0.000	3-41	14	2				
24.3100.0.000	3-23	18	2	24.4142.0.000	3-41	15	1				
24.3102.0.000	3-31	20	1	24.4143.0.000	3-37	49	1				
24.3103.0.000	3-31	21	1	24.6000.2.000	3-29	37	1				
24.4001.0.050	3-43	9	1	24.6001.3.000	3-31	22	1				
24.4001.0.050	3-65	2	1	24.6003.0.000	3-31	23	1				
24.4002.0.000	3-43	10	1	24.6004.2.001	3-31	24	1				
24.4003.0.000	3-43	11	1	24.6005.1.002	3-21	16	1				
24.4004.0.000	3-43	12	1	24.6100.2.000	3-23	19	1				
24.4004.0.000	3-65	1	1	24.8001.2.005	3-57	2	—				
24.4010.0.000	3-37	30	1	24.8001.2.021	3-57	12	1				
24.4068.0.005	3-37	31	4	24.8001.2.022	3-51	2	(1)				
24.4092.0.000	3-65	14	1	68.0358.0.800	3-51	3	(1)				
24.4093.0.000	3-65	10	1	70.4165.1.125	3-53	47	1				
24.4094.0.000	3-65	9	1								
24.4109.0.000	3-35	6	1								
24.4110.1.000	3-37	32	1								
24.4111.2.000	3-37	33	1								
24.4112.2.000	3-37	34	1								
24.4113.0.000	3-37	35	1								
24.4114.0.000	3-37	36	2								
24.4115.0.000	3-37	37	1								
24.4116.0.000	3-37	38	1								
24.4117.0.000	3-37	39	1								
24.4118.0.000	3-37	40	2								