

TABLE OF CONTENTS

	Page
Clamping	3-1
Clamping*CT	3-4
Start Switch	3-6
Main Cam	3-8
Drive Shaft.....	3-9
Stitch Feed	3-11
Combination Lateral Lever	3-13
Needle Bar Drive	3-14
Needle Bar Vibrator	3-16
Thread Handling	3-18
Thread Controls.....	3-20
Thread Take-up & Looper Drive	3-21
Flybar Control	3-22
Thread Draw-Off*CT	3-23
Race - Spreader Drive	3-24
Race*CT	3-25
Race*AF	3-26
Race - Looper Carrier	3-27
Upper Thread Trimmer	3-28
Turning Sectors & Levers	3-29
Cutting / Knife Holder	3-30
Upper Thread Draw-Off*CT	3-31
Support Damping & Latching	3-33
Electrical Drive System (Head)	3-34
Electrical Box Assembly	3-36
Covers & Supporting Members	3-38
Regular Table.....	3-40
Narrow Table	3-42
Tools, Supplies & Accessories	3-44
Optional Tools & Accessories	3-45
Oiling System	3-46
Pneumatics	3-48
Belts and Sensors	3-51
Charts	3-52

Parts Special for Short Travel CT Models (470)

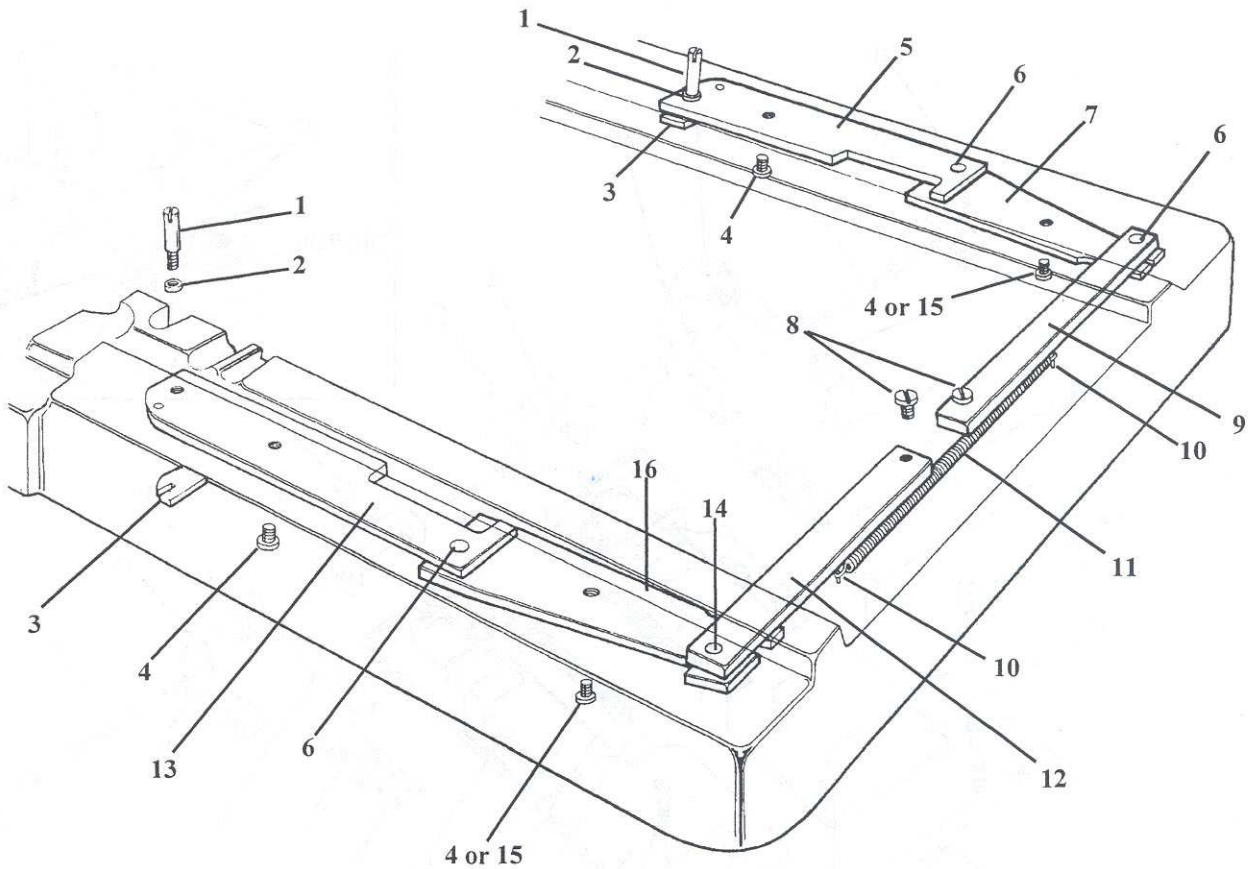
Cutting Steels and Knives	3-53
Thread Draw-Off	3-54
Main Cam	3-54
Flybar Control	3-55
Clamping	3-56
Pneumatics	3-57
Upper Thread Pick-Up.....	3-58

Revised July 1999

U.S. Phone (800) 237-3323 Fax (800) 432-4303

Outside U.S. Phone (804) 559-5000 Fax (804) 559-5290

CLAMPING



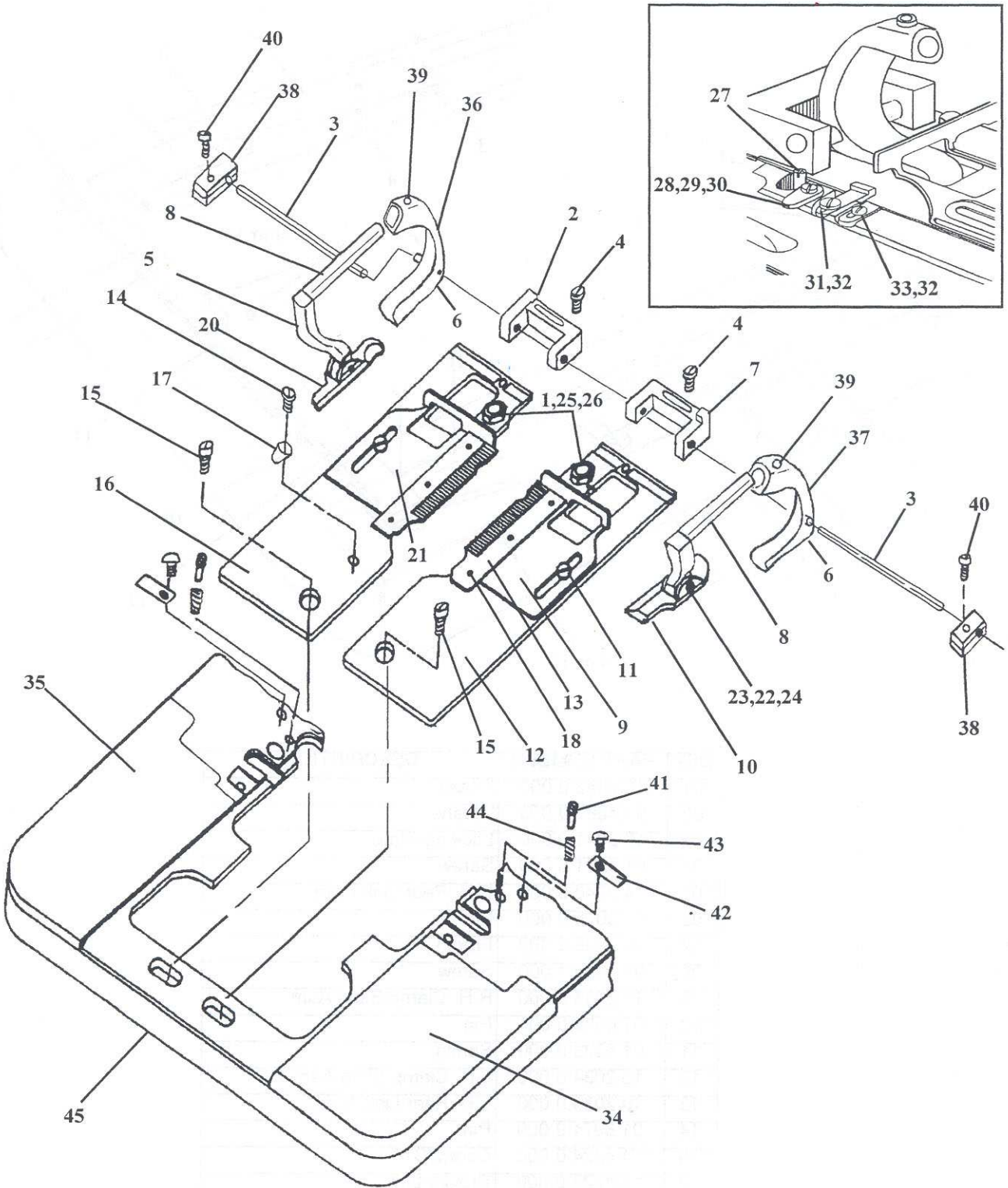
DET	PART NUMBER	DESCRIPTION
01	10.2042.0.000	Screw
02	01.4067.0.000	Washer
03	10.2041.0.000	Locking Plate
04	01.1021.0.000	Screw
05	14.2040.0.050	R.H. Rear Link Asm.
06	01.6075.0.000	Pin
07	10.2036.0.000	Front Link
08	01.1020.1.000	Screw
09	10.2033.0.000	R.H. Clamp Slide Asm.
10	01.6839.0.001	Pin
11	01.5023.0.000	Spring
12	10.2034.0.000	L.H. Clamp Slide Asm.
13	10.2039.0.000	L.H. Rear Link Asm.
14	01.6074.0.000	Pin
15	14.4224.0.000	Screw*CT
16	14.4223.0.000	Shears Link

Revised July 1999

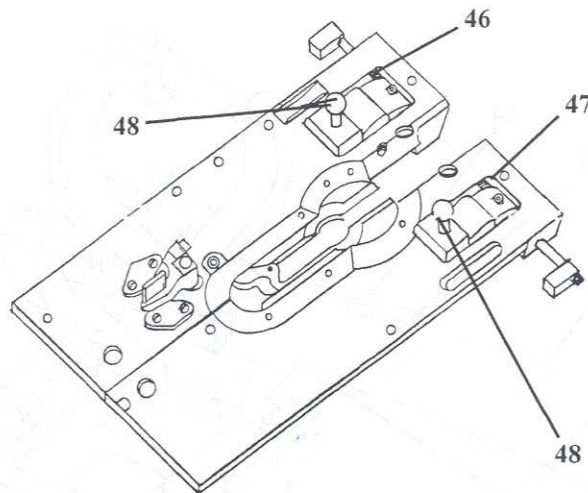
U.S. Phone (800) 237-3323 Fax (800) 432-4303

Outside U.S. Phone (804) 559-5000 Fax (804) 559-5290

CLAMPING



CLAMPING



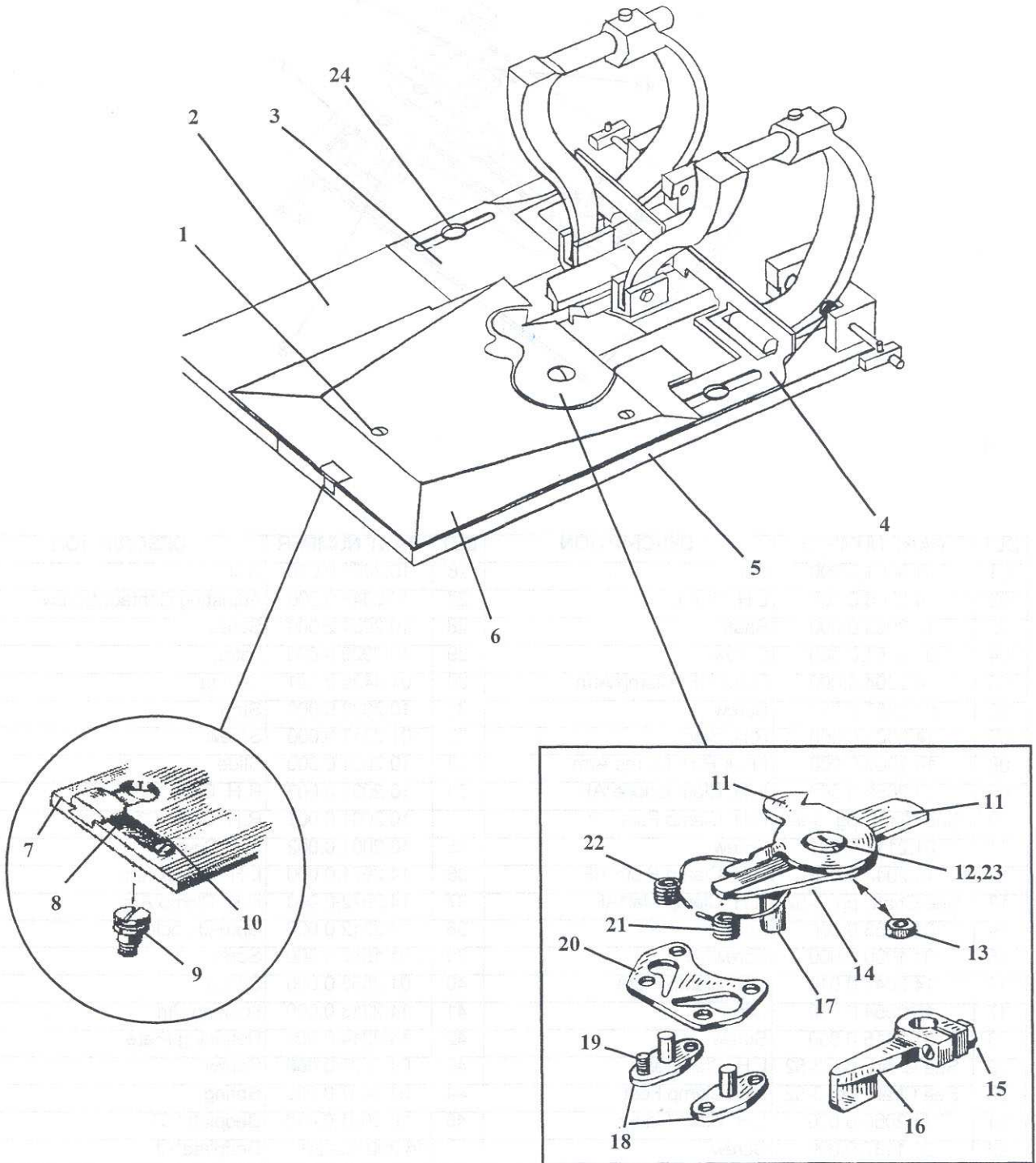
DET	PART NUMBER	DESCRIPTION	DET	PART NUMBER	DESCRIPTION
01	01.3001.0.000	Nut	26	10.2052.0.000	Roll
02	14.2008.0.000	L.H. Block	27	10.2042.0.000	Adjusting Contact Screw
03	14.2053.0.000	Shaft	28	10.2051.2.000	Screw
04	01.2051.0.000	Screw	29	10.2029.0.000	Latch
05	14.2004.0.000	Front L.H. Clamp Arm	30	01.4426.0.001	O-Ring
06	01.2557.0.001	Screw	31	10.2032.0.000	Stop
07	14.2007.0.000	R.H. Block	32	01.2312.0.000	Screw
08	14.2003.0.000	Front R.H. Clamp Arm	33	10.2031.0.000	Slide
09	14.2059.0.000	R.H. Cloth Gauge*AF	34	10.2001.0.003	R.H. Cover*AF
10	See Chart, pg. 3-52	R.H. Clamp Foot		10.2001.0.001	R.H. Cover*CT
11	01.2111.0.001	Screw	35	10.2001.0.002	L.H. Cover
12	14.2043.0.019	R.H. Clamp Plate*AF	36	14.2971.0.000	L.H. Clamp Arm
13	See Chart, pg. 3-52	R.H. Clamp Mat*AF	37	14.2972.0.000	R.H. Clamp Arm
14	01.2053.0.000	Screw	38	14.2212.0.000	Spread Lock
15	01.1020.1.000	Screw*AF	39	01.1557.0.000	Screw
16	14.2047.0.019	L.H. Clamp Plate	40	01.2558.0.000	Screw
17	10.2054.0.000	Clip	41	14.2213.0.000	Locking Pin
18	01.2015.0.000	Screw	42	14.2214.0.000	Retaining Plate
19	See Chart, pg. 3-52	L.H. Clamp Mat	43	01.2729.0.000	Screw
20	See Chart, pg. 3-52	L.H. Clamp Foot	44	01.5457.0.000	Spring
21	14.2060.0.000	L.H. Cloth Gauge	45	16.2001.0.410	Bedplate*CT
22	01.1137.0.000	Screw		16.2001.0.420	Bedplate*AF
23	01.3016.0.000	Nut	46	01.5670.0.000	L.H. Spring
24	01.4038.0.000	Spring Washer	47	01.5671.0.000	R.H. Spring
25	10.2051.2.000	Screw	48	14.2972.0.001	Ball Stud

Revised July 1999

U.S. Phone (800) 237-3323 Fax (800) 432-4303

Outside U.S. Phone (804) 559-5000 Fax (804) 559-5290

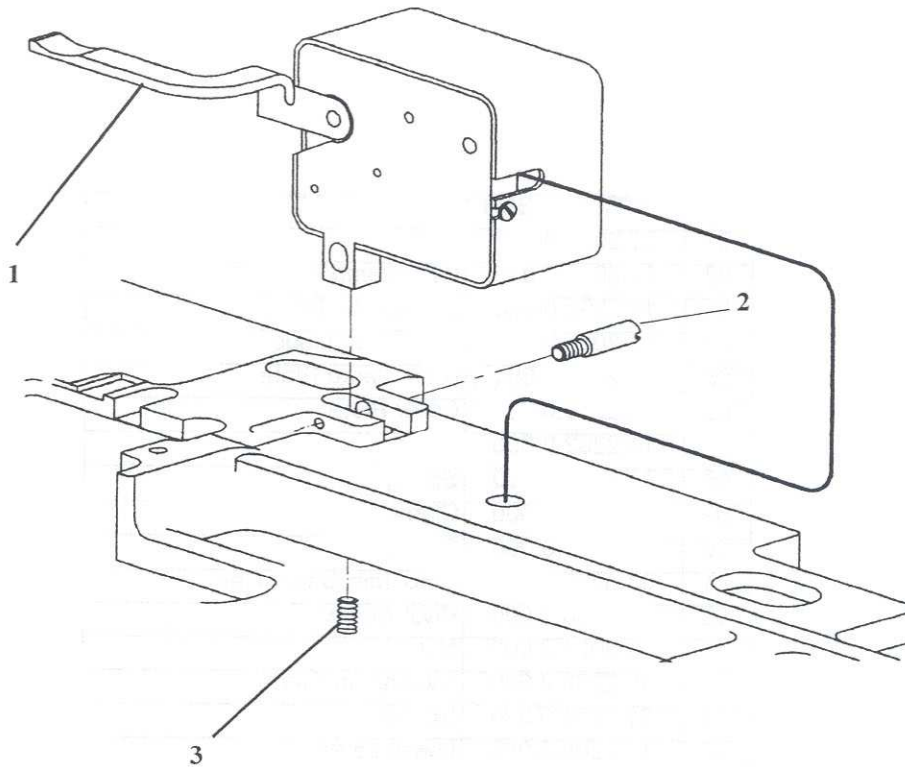
CLAMPING*CT



CLAMPING*CT

DET	PART NUMBER	DESCRIPTION
01	01.2075.0.001	Screw
02	14.2047.0.019	L.H. Clamp Plate
03	14.2060.0.000	L.H. Cloth Gauge
04	14.2059.0.300	R.H. Cloth Gauge
05	14.2043.1.301	R.H. Clamp Plate
06	10.2210.0.001	Cover Plate
07	14.2202.0.000	Latch
08	01.5034.0.000	Spring
09	10.2035.0.000	Clamp Spreading Screw
10	01.2053.0.000	Screw
11	03.5238.0.000	Cord Trim Shear Set
12	10.2208.1.000	Pivot Screw
13	01.3021.0.000	Nut
14	10.2203.0.000	Bearing (in Plate)
15	01.2074.0.000	Screw
16	10.2205.0.000	Lower Lever
17	10.2204.0.600	Actuator*CT
18	10.2218.0.000	Spring Mount
19	01.2104.0.000	Screw
20	10.2217.0.000	Spring Washer
21	01.5064.0.000	R.H. Spring
22	01.5065.0.000	L.H. Spring
23	01.5062.0.000	Spring Washer
24	01.2111.0.001	Screw

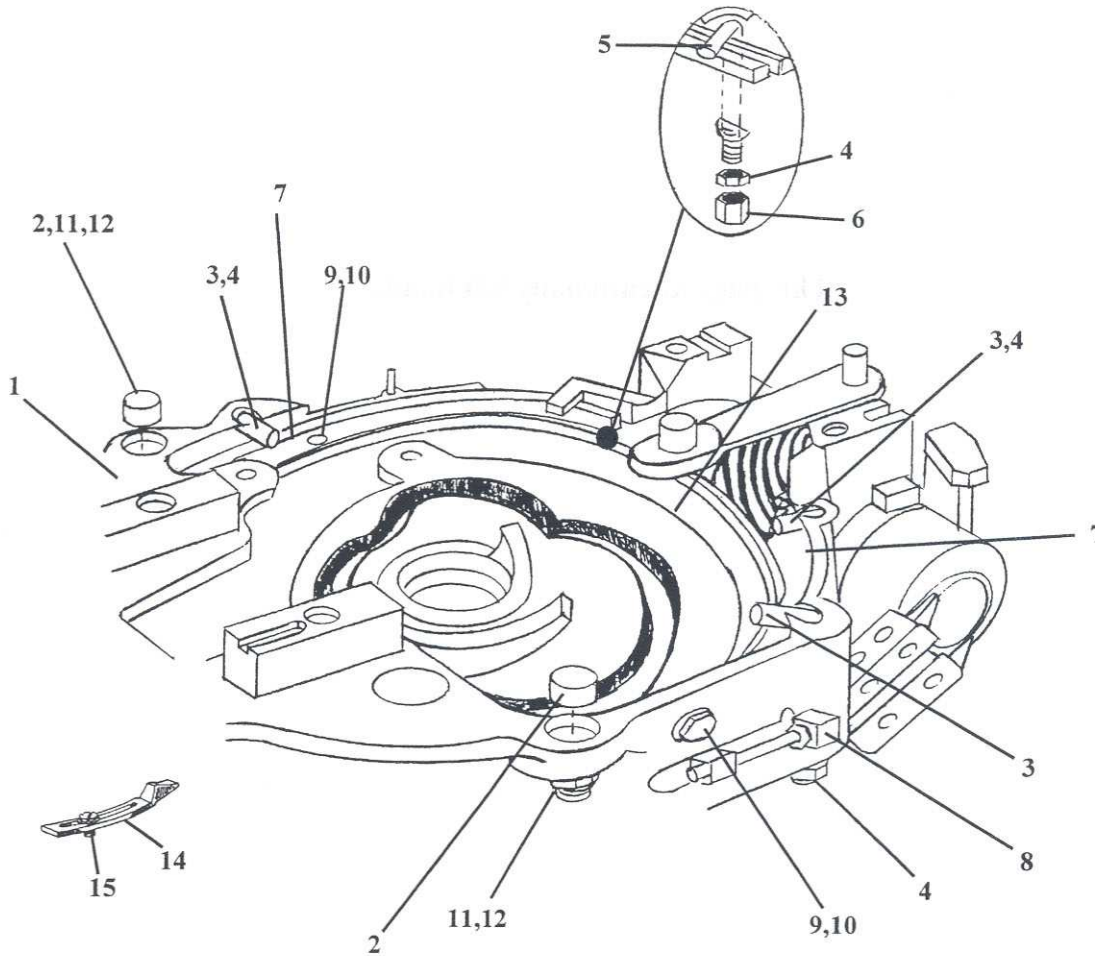
START SWITCH



DET	PART NUMBER	DESCRIPTION
01	04.3002.0.000	Start Switch Box
02	10.2014.0.000	Pivot Screw
03	01.1568.0.001	Set Screw

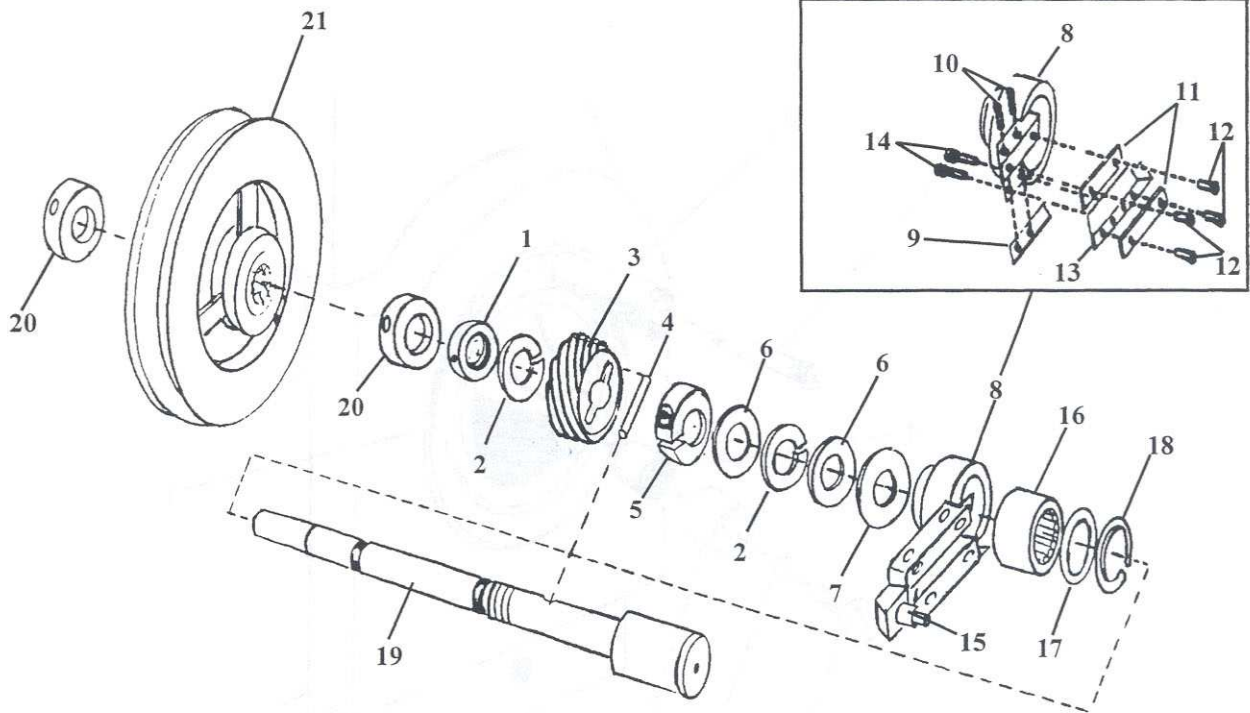
This page intentionally left blank.

MAIN CAM



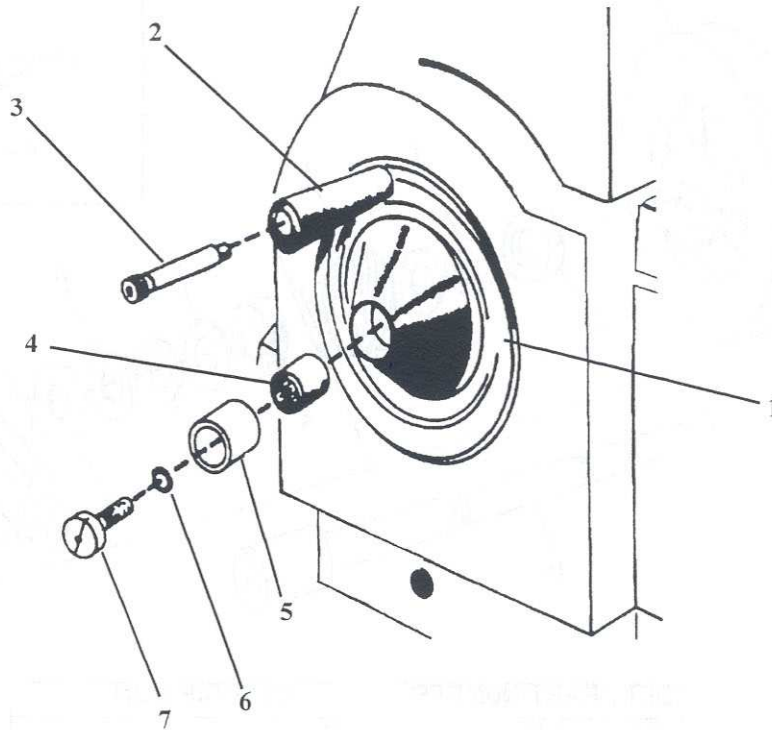
DET	PART NUMBER	DESCRIPTION
01	14.3001.0.400	Cam Case
02	10.3028.0.000	Button
03	10.3066.0.011	Long Hook
04	01.3007.0.000	Nut
05	10.3066.0.008	Short Hook
06	01.3059.0.000	Nut
07	10.3035.1.000	Hold Down Gib
08	01.6345.0.000	Lug
09	01.4018.0.000	Washer
10	01.2386.0.000	Screw
11	01.2067.0.000	Screw
12	01.3015.0.000	Nut
13	See Chart, pgf. 3-52	Main Cam
14	10.3201.0.001	Trimmer Wedge
15	01.2347.0.000	Screw

DRIVE SHAFT



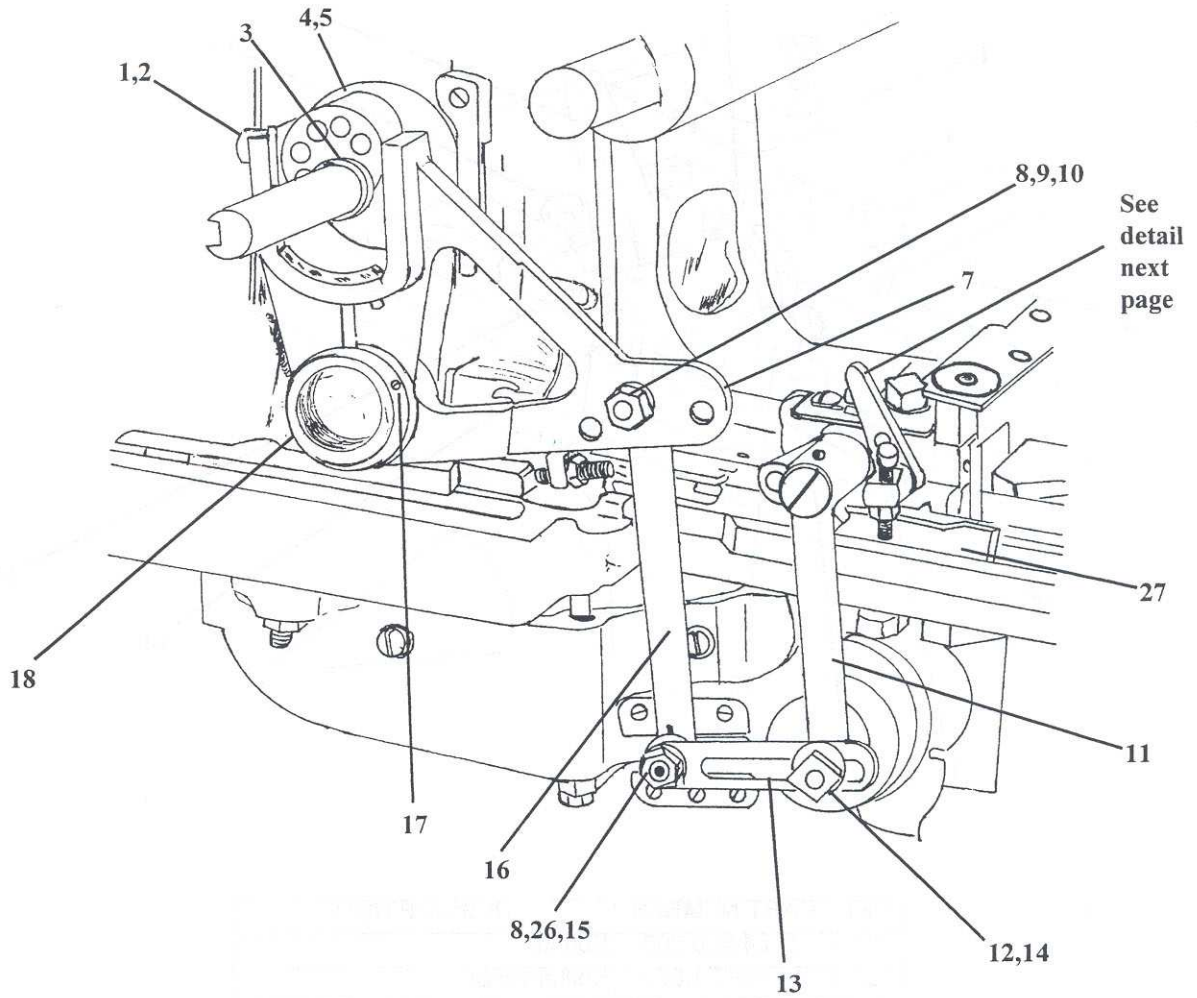
DET	PART NUMBER	DESCRIPTION
01	10.3049.0.000	Collar
02	01.4009.0.001	Lockwasher
03	10.3050.0.000	Worm Gear
04	10.3051.0.000	Drive Pin
05	01.7668.0.000	Collar
06	01.4747.0.000	Washer
07	01.4905.0.000	Washer
08	14.3100.0.000	Feed Clutch Asm.
09	10.3082.0.000	Inner Plate
10	01.2008.0.000	Screw
11	10.3080.0.000	Outer Plate
12	01.2075.0.000	Screw
13	14.3101.0.000	Wear Plate
14	01.2436.0.000	Screw
15	13.3079.0.000	Slide Stud
16	01.7800.0.000	Clutch/Roller Bearing Asm.
17	01.4904.0.000	Washer
18	01.6970.0.000	Retaining Ring
19	14.3047.0.801	Worm Shaft
20	24117.015	Collar
21	14.1240.0.050	Pulley Asm.

DRIVE SHAFT



DET	PART NUMBER	DESCRIPTION
01	13.3101.2.001	Handwheel
02	13.3101.2.002	Handle
03	01.1470.0.000	Screw
04	01.7653.0.000	Clutch Roller Bearing
05	01.7722.0.000	Sleeve
06	01.4482.0.000	O-Ring
07	13.3117.0.000	Screw

STITCH FEED



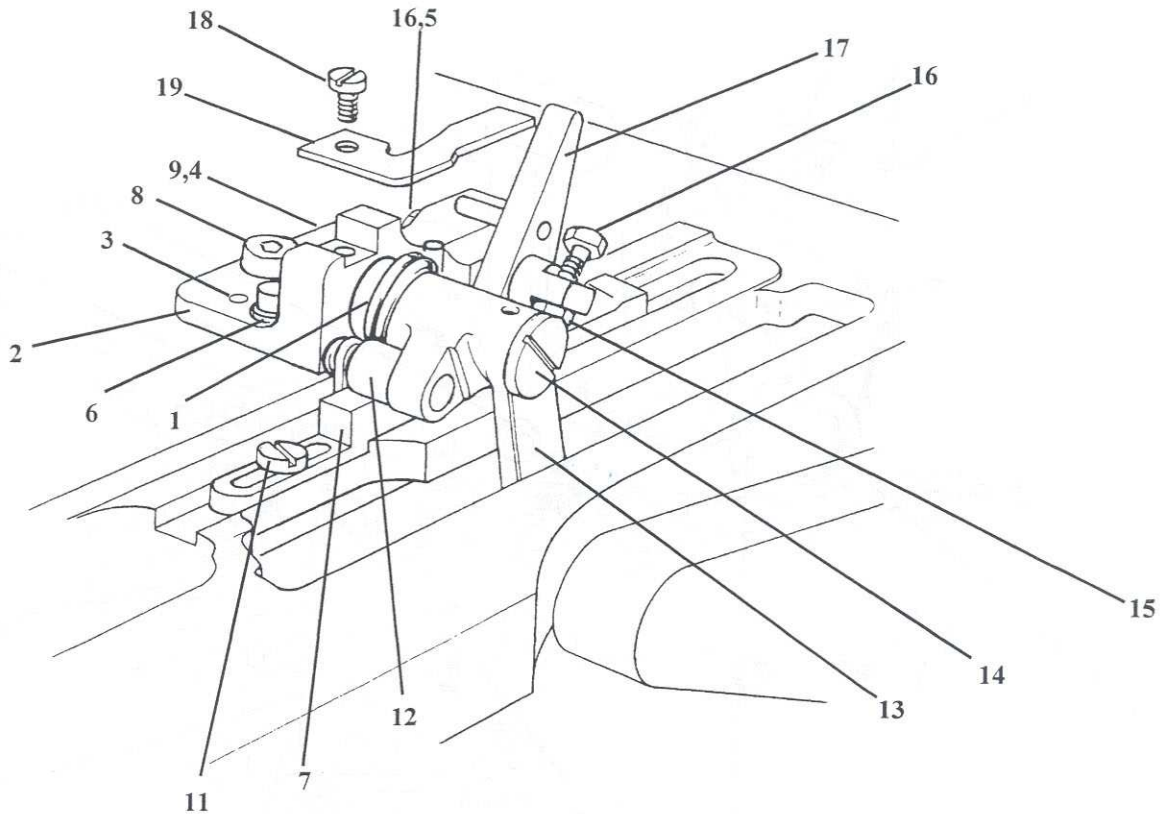
DET	PART NUMBER	DESCRIPTION	DET	PART NUMBER	DESCRIPTION
01	01.2022.0.000	Screw	12	01.3019.0.000	Nut
02	01.4019.0.000	Lockwasher	13	10.3081.0.000	Arm
03	01.8002.1.000	Key	14	01.1028.0.008	Stud
04	10.1093.2.000	Feed Cam Asm.	15	13.3079.0.000	Slide Stud
05	01.2249.0.000	Screw	16	10.1109.3.000	Link
07	14.1108.0.050	Follower Asm.	17	01.2028.0.000	Screw
08	01.3042.0.000	Nut	18	01.7038.0.000	Collar
09	01.4522.0.000	Washer	26	01.4503.0.000	Washer
10	01.1781.0.000	Screw	27	14.2061.0.300	Increase Wedge*CT
11	10.1168.0.000	Link		14.2061.0.100	Increase/Decrease Wedge*AF

Revised July 1999

U.S. Phone (800) 237-3323 Fax (800) 432-4303

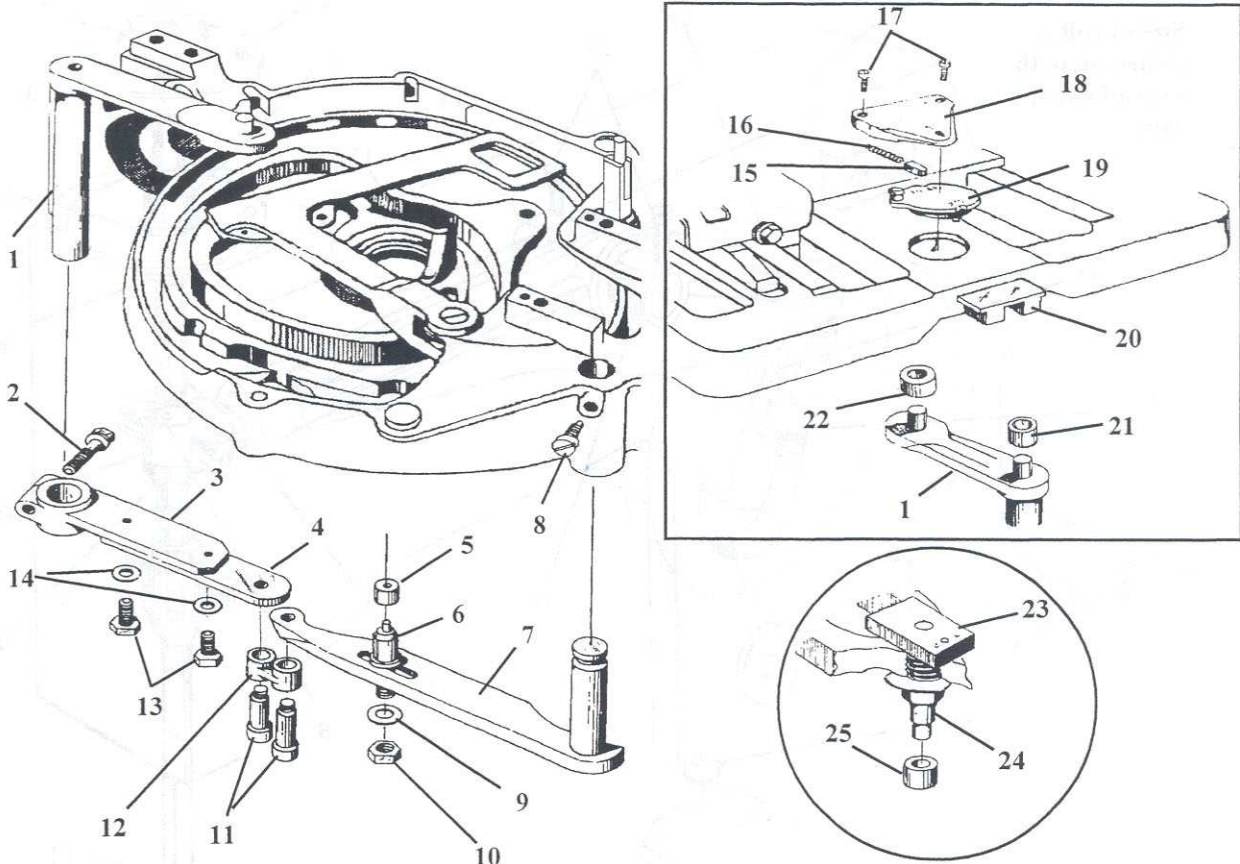
Outside U.S. Phone (804) 559-5000 Fax (804) 559-5290

STITCH FEED



DET	PART NUMBER	DESCRIPTION
01	01.5448.0.000	Spring
02	10.1167.1.000	Shifter Block
03	01.6428.0.000	Pin
04	01.1147.0.002	Screw
05	01.4042.0.000	Washer*AF
06	01.2130.0.000	Screw
07	14.2061.0.300	Increase Wedge*CT
	14.2061.0.100	Increase/Decrease Wedge*AF
08	01.4522.0.000	Washer
09	01.4117.0.000	Washer
10	01.4503.0.000	Washer
11	01.2041.0.000	Screw
12	10.2007.0.350	Roll
13	10.1168.0.000	Link
14	01.2146.0.000	Screw
15	01.3005.0.000	Nut*AF
16	01.2543.0.000	Screw*AF
17	10.1169.0.000	Shifter *AF
18	01.2344.0.000	Screw*AF
19	01.5447.0.000	Spring*AF

COMBINATION LATERAL LEVER



DET	PART NUMBER	DESCRIPTION	DET	PART NUMBER	DESCRIPTION
01	10.3034.0.258	Upper Lateral Lever*AF	12	10.3302.0.000	Link
	10.3034.0.300	Upper Lateral Lever*CT	13	01.2085.0.000	Screw
02	01.2016.0.000	Screw	14	01.4006.0.000	Washer
03	10.3019.0.300	Lower Lateral Lever*CT	15	10.2259.0.000	Plunger*AF
	10.3019.1.006	Lower Lateral Lever*AF	16	01.5172.0.000	Spring*AF
04	10.3300.0.006	Lower Lateral Extension	17	01.1574.0.002	Screw*AF
05	10.3018.0.350	Roll	18	10.2258.0.090	Cover*AF
06	10.3020.0.000	Stud (CT)	19	10.2257.0.000	Shifter*AF
	10.3020.0.006	Stud (AF)	20	10.2260.0.001	Guide Plate*7mm
07	10.3303.0.000	Combination Lever	21	01.7023.0.000	Roll
08	01.2324.0.000	Screw	22	01.7043.0.000	Roll*AF
09	01.4005.0.000	Washer	23	10.3033.0.017	Block*CT
10	01.3013.0.000	Nut	24	10.2006.2.000	Bedplate Stud
11	10.3301.1.006	Screw	25	10.2007.0.350	Roll

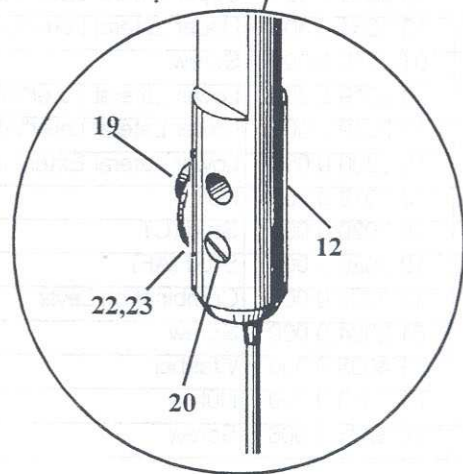
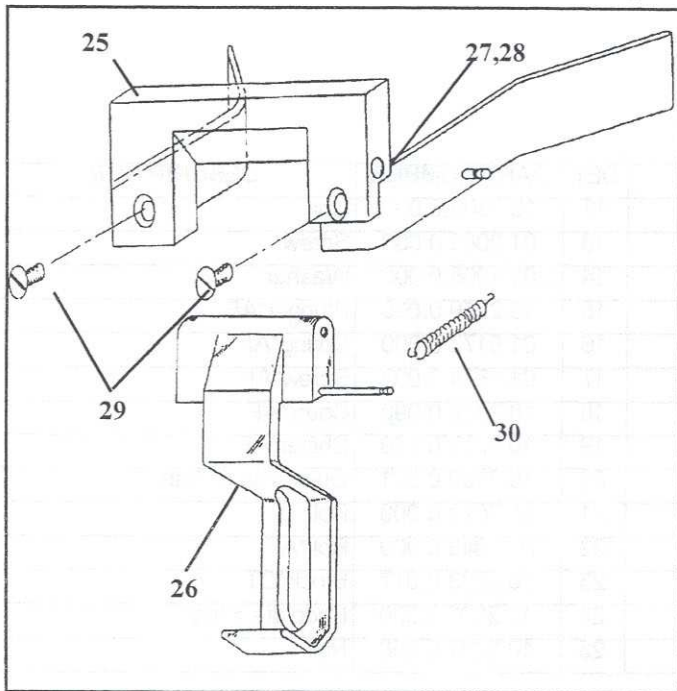
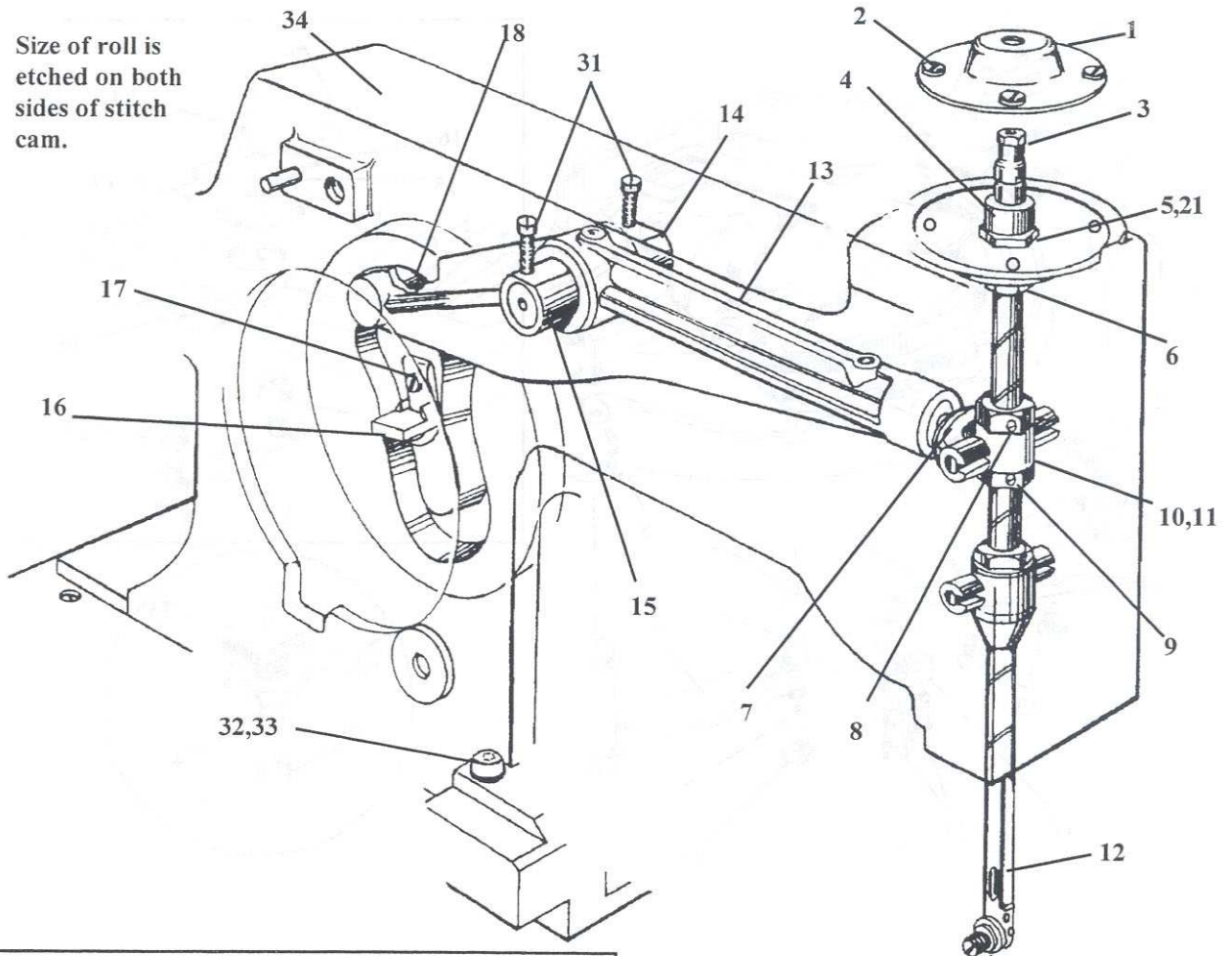
Revised July 1999

U.S. Phone (800) 237-3323 Fax (800) 432-4303

Outside U.S. Phone (804) 559-5000 Fax (804) 559-5290

NEEDLE BAR DRIVE

Size of roll is etched on both sides of stitch cam.



NEEDLE BAR DRIVE

DET	PART NUMBER	DESCRIPTION
01	10.1014.1.000	Cap
02	01.1661.0.001	Screw
03	10.1032.0.000	Bushing
04	14.1017.0.000	Guide (w/nut)
05	14.1016.1.050	Needle Bar Guide Asm.
06	10.1016.2.000	Nut
07	14.1046.0.000	Yoke Asm.
08	01.2419.0.000	Screw
09	10.1027.1.050	Clamp Nut Kit
10	10.1045.2.000	Gimbal
11	01.7015.0.000	Bushing
12	14.1028.0.000	Needle Bar
13	14.1047.0.050	Stitch Drive Lever Asm.
14	13.1049.0.000	Bushing
15	13.1050.0.000	Pivot Stud
16	10.1152.0.000	Clip
17	01.2079.0.000	Screw
18	See Chart	Roll
19	10.1030.0.017	Screw
20	01.2193.0.000	Screw
21	14.1042.0.000	Diaphragm
22	01.5167.0.000	Spring
23	10.1029.1.000	Tension Disc (2)
25	14.1258.1.000	Needle Guard Holder Asm.
26	14.1252.1.000	Needle Guard Asm.
27	01.2557.0.001	Screw
28	01.1241.0.001	Screw
29	01.2659.0.000	Screw
30	01.5429.0.000	Spring
31	01.2599.0.003	Screw
32	01.1147.0.003	Screw
33	01.4117.0.000	Wasjer
34	14.1001.1.400	Head

Roll Chart		
Dia.	Roll P/N	Size
.5000 ^{+0.000} _{-.0003}	10.1122.0.010	Std.
.5002 ^{+0.000} _{-.0002}	10.1122.0.999	#1 O.S.
.5004 ^{+0.000} _{-.0002}	10.1122.0.998	#2 O.S.
.5006 ^{+0.000} _{-.0002}	10.1122.0.980	#3 O.S.
** .5010 ^{+0.000} _{-.0002}	10.1122.0.011	#5 O.S.
** .5014 ^{+0.000} _{-.0002}	10.1122.0.012	#6 O.S.
** .5018 ^{+0.000} _{-.0002}	10.1122.0.013	#7 O.S.
** .5022 ^{+0.000} _{-.0002}	10.1122.0.014	#8 O.S.
** .5026 ^{+0.000} _{-.0002}	10.1122.0.015	#9 O.S.
** .5030 ^{+0.000} _{-.0002}	10.1122.0.016	#10 O.S.

**To be used on oversized cam slots

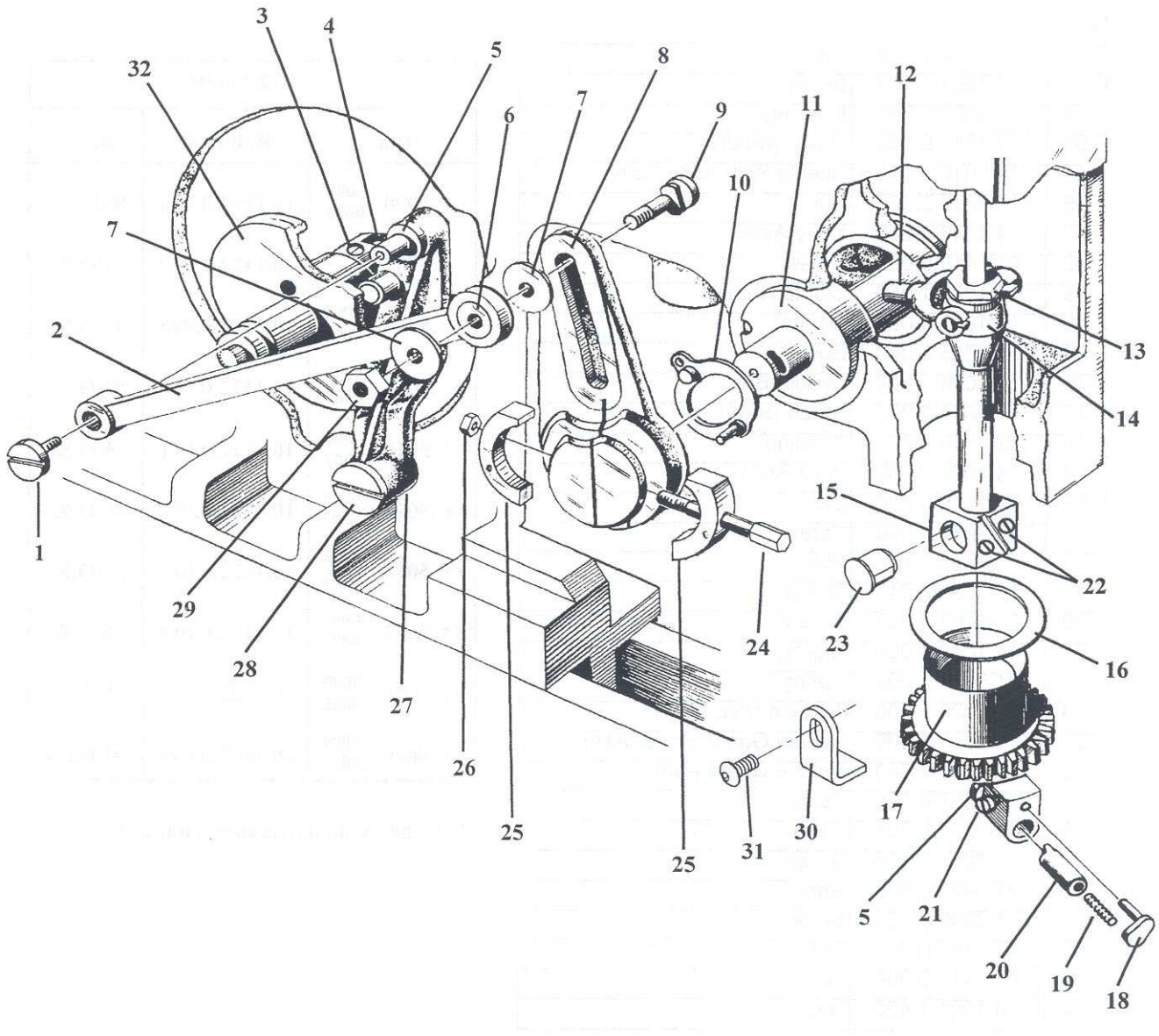
Adjustable Diaphragm Kit, P/N 03.5321.0.000, includes:

- (1) 14.1017.0.000 Guide w/Nut
- (1) 14.1016.1.050 Needle Bar Guide Asm.
- (1) 14.1042.0.000 Diaphragm

Revised July 1999

U.S. Phone (800) 237-3323 Fax (800) 432-4303
Outside U.S. Phone (804) 559-5000 Fax (804) 559-5290

NEEDLE BAR VIBRATOR



NEEDLE BAR VIBRATOR

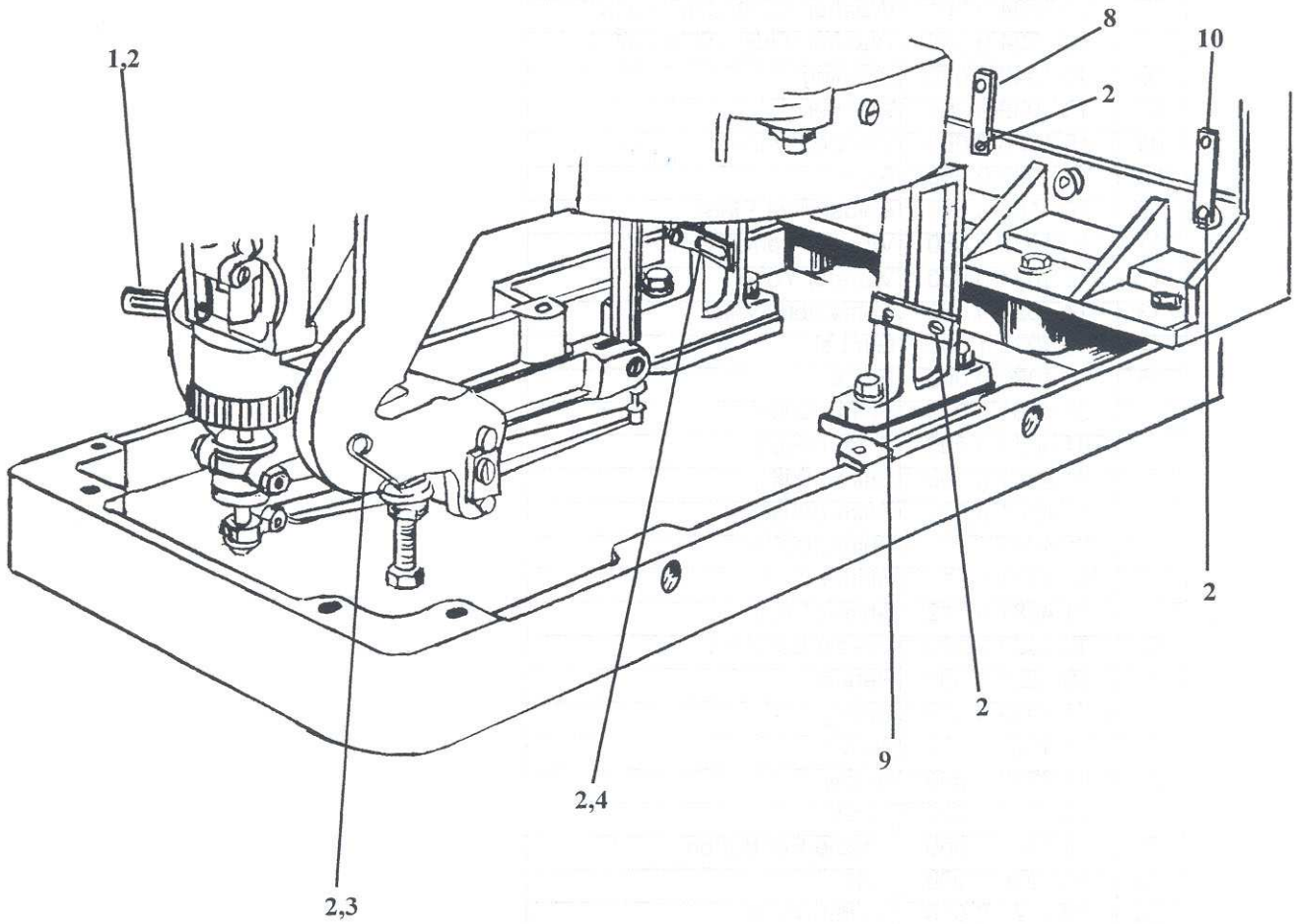
DET	PART NUMBER	DESCRIPTION
01	01.2011.0.000	Screw
02	14.1041.0.000	Vibrator Drag Link
03	10.1031.0.000	Screw
04	10.1076.0.000	Coupling Block
05	10.1024.0.002	Washer (O/S) .0779"-.0782"
	10.1024.0.001	Washer (O/S) .0782"-.0785"
	10.1024.0.003	Washer (O/S) .0776"-.0779"
06	10.1040.0.000	Bushing
07	10.1039.0.000	Washer
08	10.1038.2.000	Vibrator Crank
09	10.1037.0.000	Stud
10	10.1153.0.000	Adjustment Plate
11	14.1035.0.050	Vibrator Barrel Asm.
12	10.1034.0.000	Vibrator Yoke
13	14.4023.0.000	Adjustable Collar
14	10.1033.1.000	Gimbal
15	14.1070.0.000	Block
16	01.4081.0.005	Shim (.005")
	01.4081.0.006	Shim (.006")
	01.4081.0.008	Shim (.008")
	01.4081.0.009	Shim (.009")
	01.4081.0.010	Shim (.010")
	01.4081.0.011	Shim (.011")
	01.4081.0.012	Shim (.012")
17	10.1023.3.000	Needle Bar Gear
18	10.1021.1.000	Retainer
19	01.5003.0.000	Spring
20	10.1022.0.000	Guide
21	01.2008.0.000	Screw
22	01.1889.0.000	Screw
23	14.1025.1.000	Needle Bar Button
24	13.1036.0.000	Bolt
25	10.1147.0.000	Clamp Block
26	01.3005.0.000	Nut
27	14.1043.0.000	Vibrator Cam Follower
28	10.1044.0.000	Screw
29	01.3012.0.000	Nut
30	14.1250.0.000	Needle Bar Gear Bracket
31	01.1983.0.000	Screw
32	05.0531.0.001	Vibrator Cam

Revised July 1999

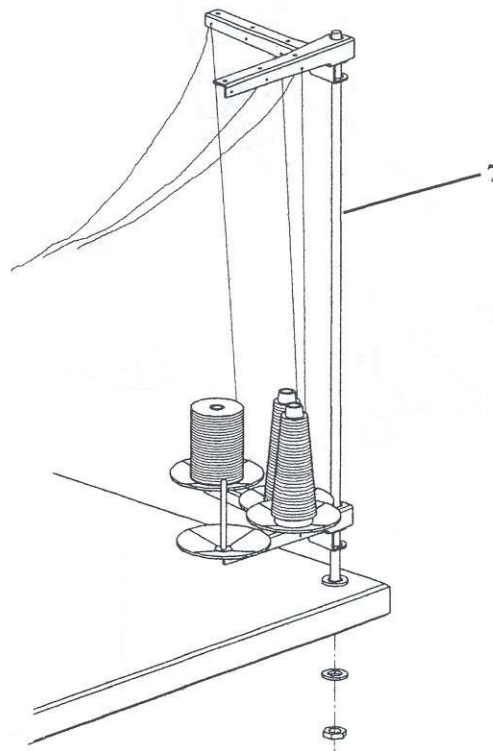
U.S. Phone (800) 237-3323 Fax (800) 432-4303

Outside U.S. Phone (804) 559-5000 Fax (804) 559-5290

THREAD HANDLING



THREAD HANDLING



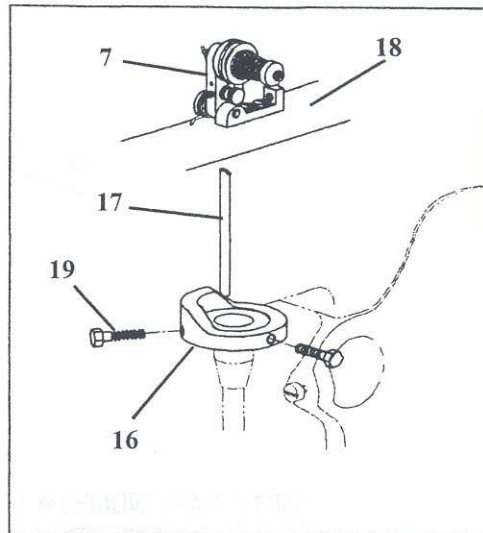
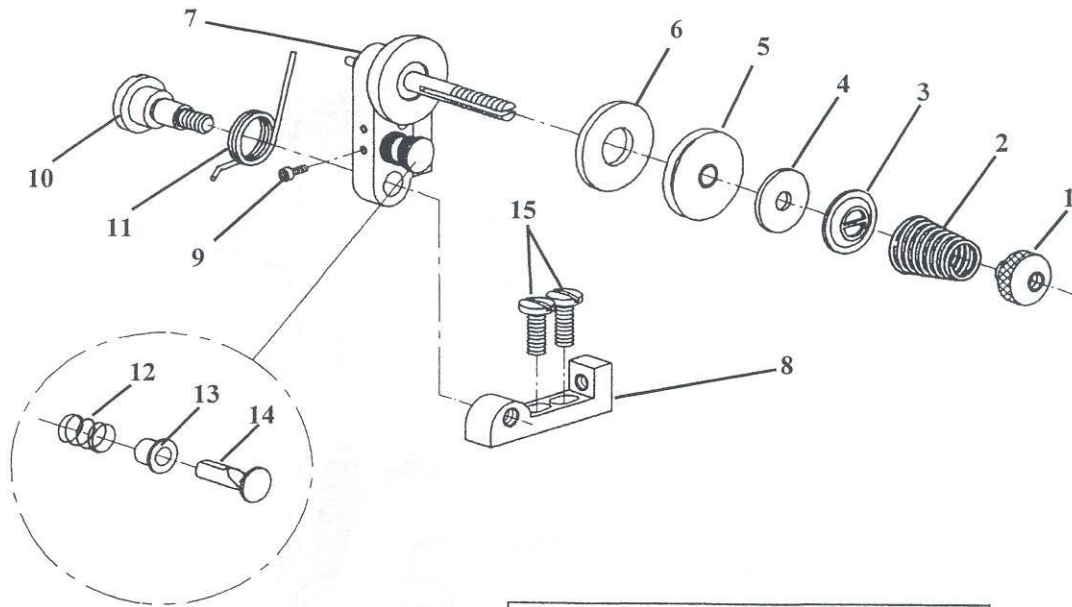
DET	PART NUMBER	DESCRIPTION
01	10.3607.1.000	Cord Guide
02	01.2247.0.002	Screw
03	10.4550.0.000	Cord Guide
04	13.3127.0.000	Cord Guide
07	17.0094.6.009	Thread Stand Asm.
08	13.3109.0.003	Thread Guide Asm.
09	13.3109.0.002	Thread Guide Asm.

Revised July 1999

U.S. Phone (800) 237-3323 Fax (800) 432-4303

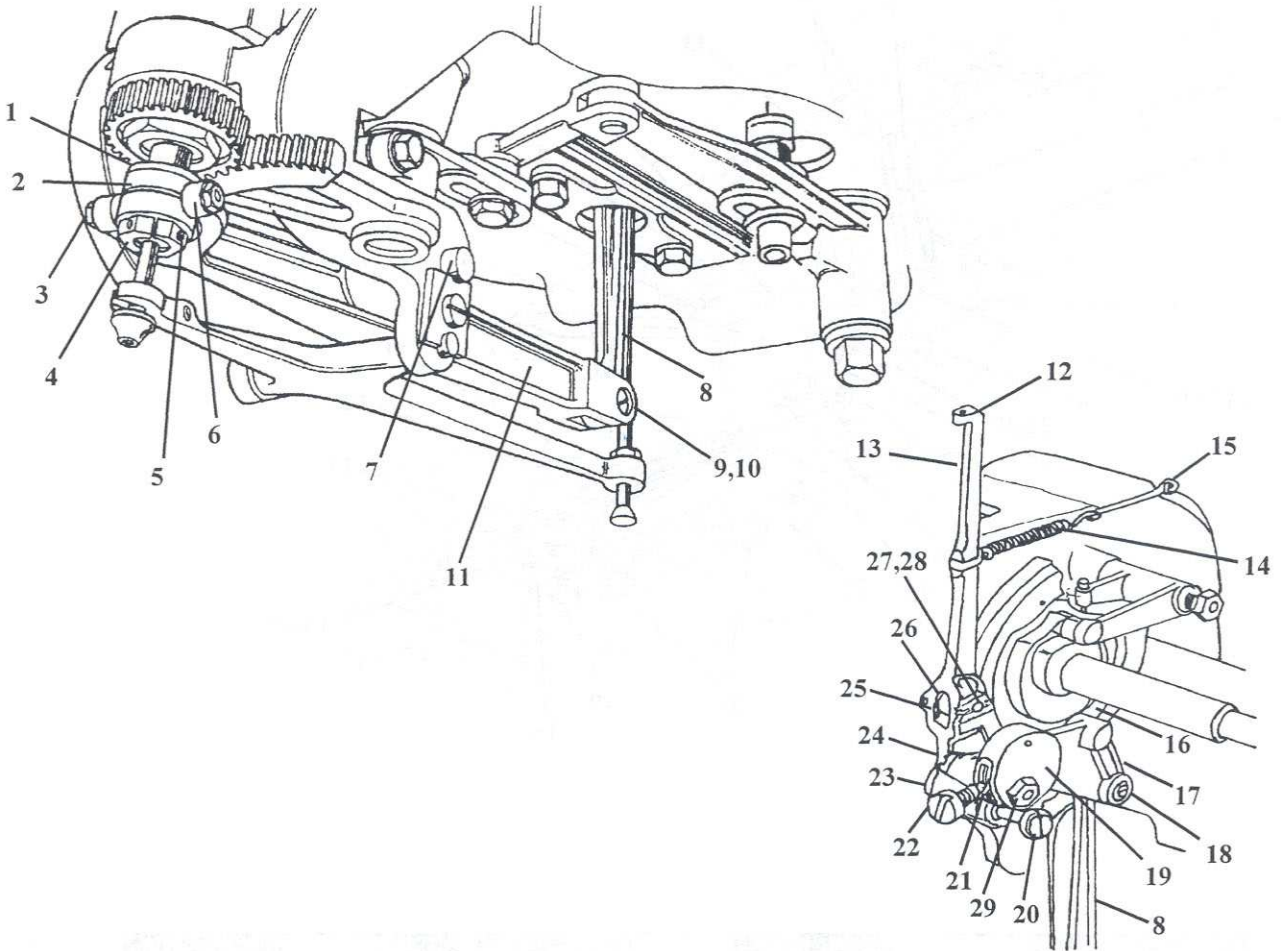
Outside U.S. Phone (804) 559-5000 Fax (804) 559-5290

THREAD CONTROLS



DET	PART NUMBER	DESCRIPTION	DET	PART NUMBER	DESCRIPTION
01	10.4030.0.000	Nut	10	01.1114.0.000	Screw
02	01.5603.0.000	Spring	11	01.5163.0.000	Torsion Spring
03	10.1003.0.000	Washer	12	01.5002.0.000	Spring
04	10.1004.0.000	Felt Washer	13	10.1009.0.000	Bushing
05	10.1078.1.000	Tension Roller Asm.	14	10.1008.0.000	Guide
06	10.1077.0.000	Felt Washer	15	01.2039.0.000	Screw
07	10.1158.1.050	Tension Arm Asm.	16	10.1160.0.000	Cam
08	10.1159.0.000	Tension Bracket Asm.	17	01.6334.0.000	Rod
09	01.2001.0.000	Screw	18	14.1001.1.400	Head
			19	01.2362.0.000	Screw

THREAD TAKE-UP & LOOPER DRIVE



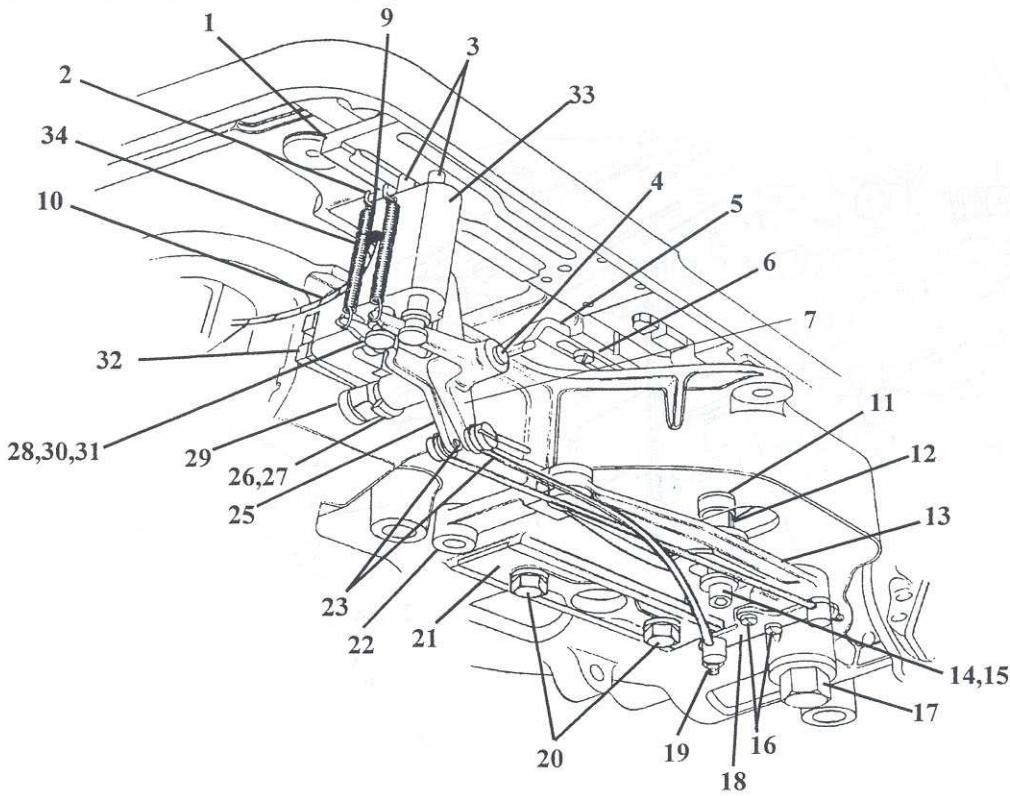
DET	PART NUMBER	DESCRIPTION	DET	PART NUMBER	DESCRIPTION
01	01.4010.0.000	Washer	15	01.6831.0.002	Anchor
02	10.4024.0.000	Bearing Ring	16	10.1122.0.017	Roll (.010")
03	01.3020.0.000	Nut	17	14.1064.1.000	Looper Cam Follower Asm.
04	14.4023.0.000	Adjustable Collar	18	10.1066.2.000	Screw
05	01.2007.0.000	Clamp Screw	19	14.1026.0.000	Core Disc
06	10.3007.0.000	Bearing (inside lever)	20	10.1055.0.000	Pivot Screw
07	14.3005.0.000	Pivot Pin	21	10.1062.0.000	Jam Plug
08	14.1067.0.000	Looper Link	22	01.2063.0.000	Screw
09	10.3008.0.000	Screw	23	10.1054.0.000	Pivot Bushing
10	01.3010.0.000	Nut	24	01.1151.0.000	Screw
11	14.3006.0.201	Looper Lever Asm.*CB/CA	25	01.4751.0.000	Spacer
12	01.7041.0.000	Bushing	26	01.7630.0.001	Roller Bearing
13	14.1236.0.000	Take-up Lever	27	13.1052.0.001	Stud
14	01.5005.0.001	Spring Asm.	28	10.1053.0.000	Cotter Pin
			29	01.3400.0.000	Nut

Revised July 1999

U.S. Phone (800) 237-3323 Fax (800) 432-4303

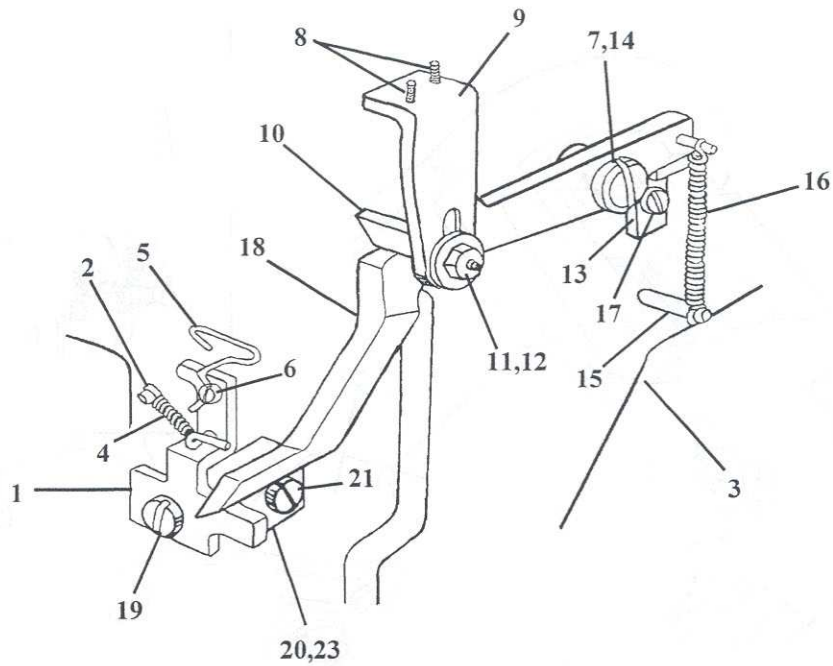
Outside U.S. Phone (804) 559-5000 Fax (804) 559-5290

FLYBAR CONTROL



DET	PART NUMBER	DESCRIPTION	DET	PART NUMBER	DESCRIPTION
01	10.2255.2.150	Cam Plate*AF-CB	18	10.3258.0.000	Wire Bracket*AF
	10.2255.3.200	Cam Plate*AF.CB.R.FE	19	01.3016.0.000	Nut*AF
02	01.6839.0.001	Grooved Pin*AF	20	01.2031.0.000	Screw
03	10.3252.1.000	Pin*AF	21	10.3027.0.000	Cam Center Support
04	01.1447.0.000	Stud*AF	22	10.3012.0.000	Link
05	10.2256.0.000	Bracket*AF	23	10.3259.1.001	R.H. Wire Rod*AF
06	01.2043.0.000	Screw*AF		10.3259.1.002	L.H. Wire Rod*AF
07	10.3254.0.000	R.H. Pin Actuator*AF	24	01.4472.0.000	Washer
08	01.1432.0.000	Screw*AF	25	10.3253.0.000	L.H. Pin Actuator*AF
09	07.0400.0.003	Wick*AF	26	10.3262.0.250	Latch*AF
10	07.0401.0.007	Wick*AF	27	01.2006.0.000	Screw*AF
11	10.3018.0.000	Roll *CA	28	01.2088.0.000	Screw*AF
12	14.3017.0.000	Sector Stud	29	01.4701.0.000	Washer*AF
13	03.5245.0.000	Sector Lever Repl'mt Kit	30	01.4046.0.000	Lockwasher*AF
14	01.1594.0.000	Screw	31	01.6031.0.000	Taper Pin*AF
15	01.4154.0.000	Washer	32	10.3250.1.000	Spacer*AF
16	01.2079.0.000	Screw*AF	33	14.3251.1.000	Bracket*AF
17	10.3016.0.000	Pivot Stud	34	01.5054.0.000	Spring*AF

THREAD DRAW-OFF*CT



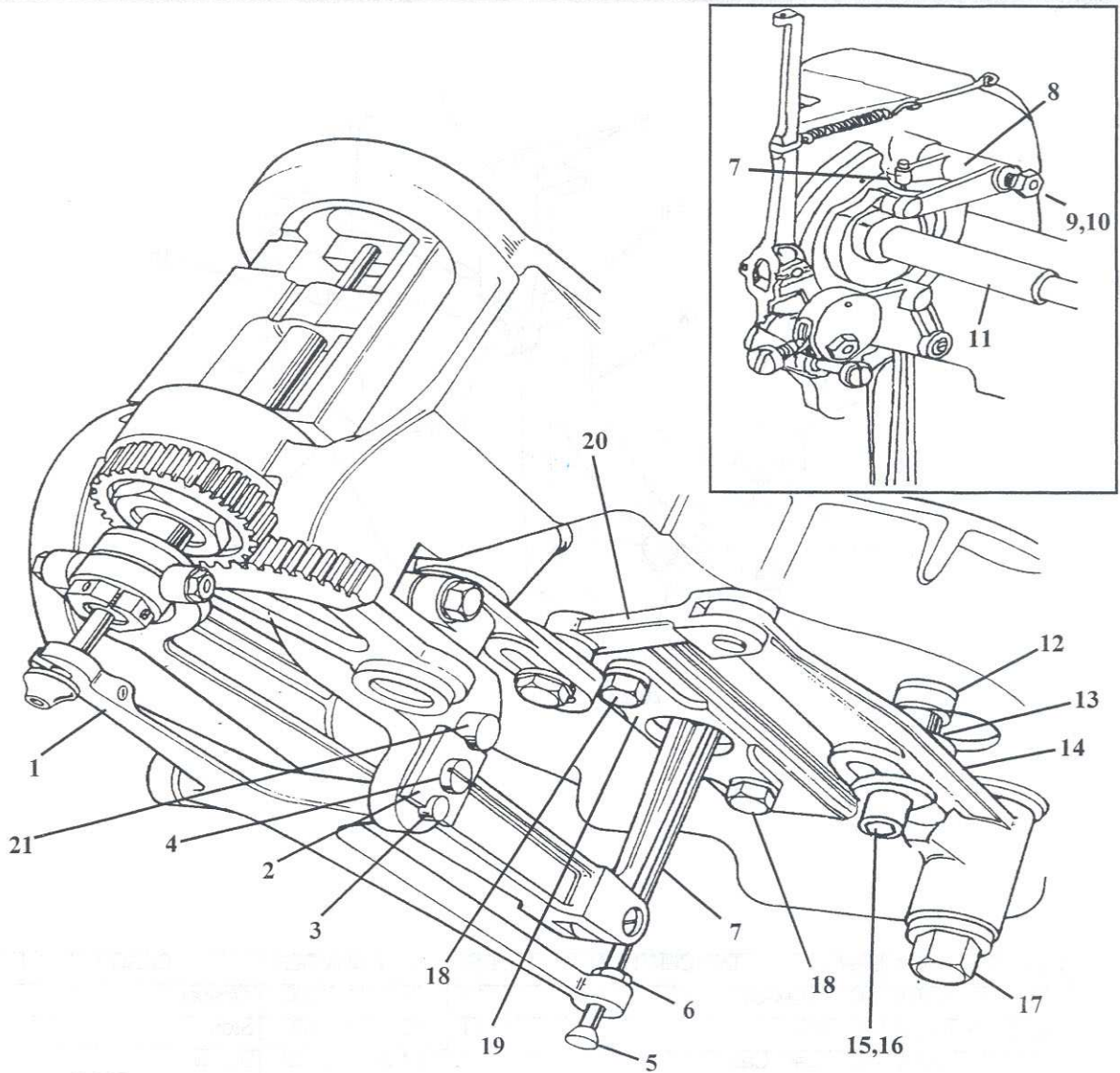
DET	PART NUMBER	DESCRIPTION	DET	PART NUMBER	DESCRIPTION
01	13.4205.0.000	Draw-off Lever	12	01.4011.0.000	Washer
02	01.6013.0.000	Pin	13	13.3121.0.000	Stop
03	14.3001.0.400	Cam Case	14	01.2886.0.002	Screw
04	01.5042.0.000	Spring	15	01.6831.0.000	Grooved Pin
05	10.4206.0.000	Looper Puller	16	01.5039.0.000	Spring
06	01.2081.0.000	Screw	17	01.2241.0.001	Screw
07	01.7632.1.000	Bushing	18	13.3118.3.000	Actuator
08	01.2059.0.000	Screw	19	01.1051.1.000	Screw
09	13.2200.1.000	Bracket	20	13.4207.1.000	Pivot Block
10	10.2201.2.000	Stud	21	01.2144.0.000	Screw
11	01.3001.0.000	Nut	23	01.1774.0.000	Screw

Revised July 1999

U.S. Phone (800) 237-3323 Fax (800) 432-4303

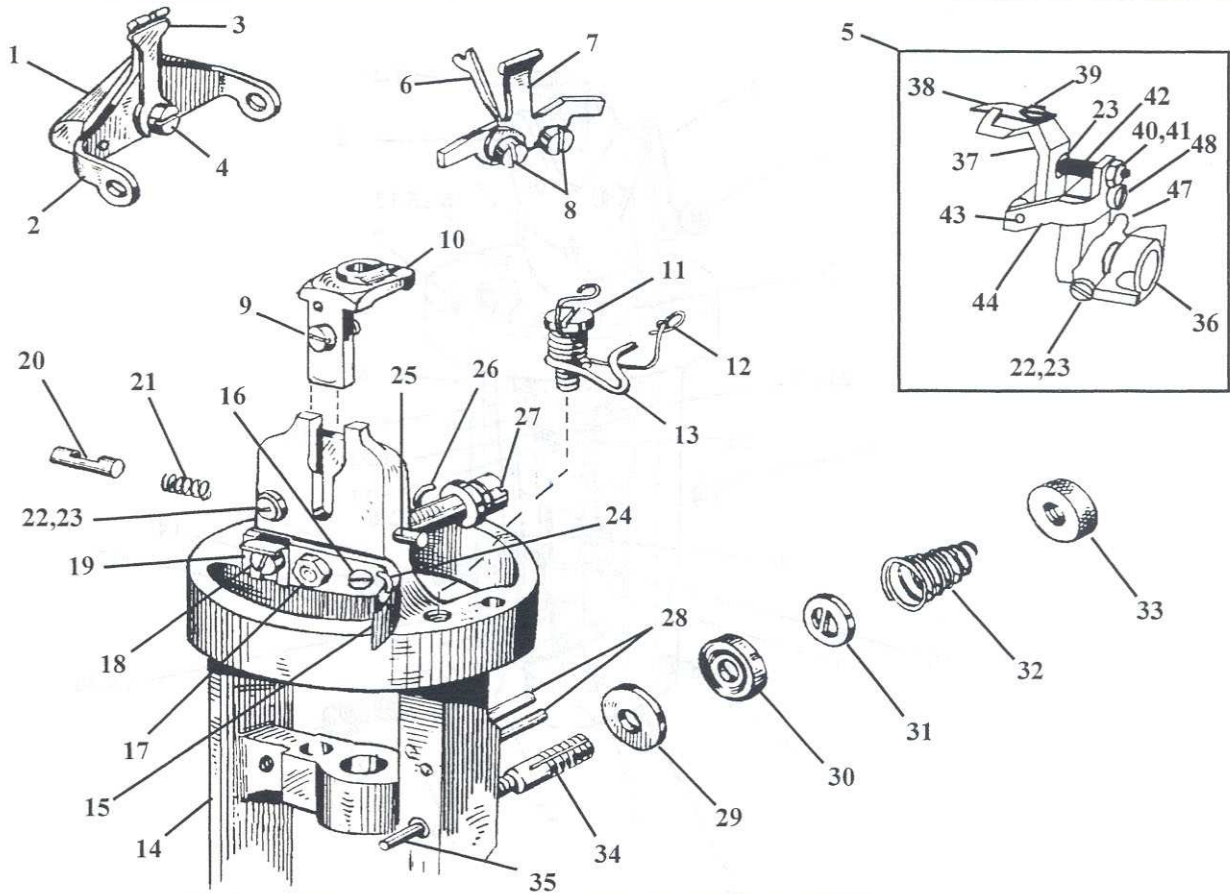
Outside U.S. Phone (804) 559-5000 Fax (804) 559-5290

RACE - SPREADER DRIVE



DET	PART NUMBER	DESCRIPTION	DET	PART NUMBER	DESCRIPTION
01	14.3004.0.000	Spreader Rocker	11	13.1091.1.000	Cam & Shaft Asm.
02	10.3002.0.000	Locking Plate	12	10.3018.0.350	Roll
03	14.3003.0.000	Pivot Rocker	13	14.3017.0.000	Sector Stud
04	01.2041.0.000	Screw	14	03.5245.0.000	Sector Lever Repl'mt Kit
05	10.1061.1.000	Ball Tip	15	01.1594.0.000	Screw
06	01.3025.0.000	Nut	16	01.4154.0.000	Washer
07	10.1060.2.000	Spreader Link	17	10.3016.0.000	Pivot Stud
08	14.1058.0.000	Cam Follower	18	01.2031.0.000	Screw
09	14.1059.0.000	Pivot Pin	19	10.3027.0.000	Cam Center
10	01.3005.0.000	Nut	20	10.3012.0.000	Link
			21	14.3005.0.000	Pivot Pin

RACE*CT



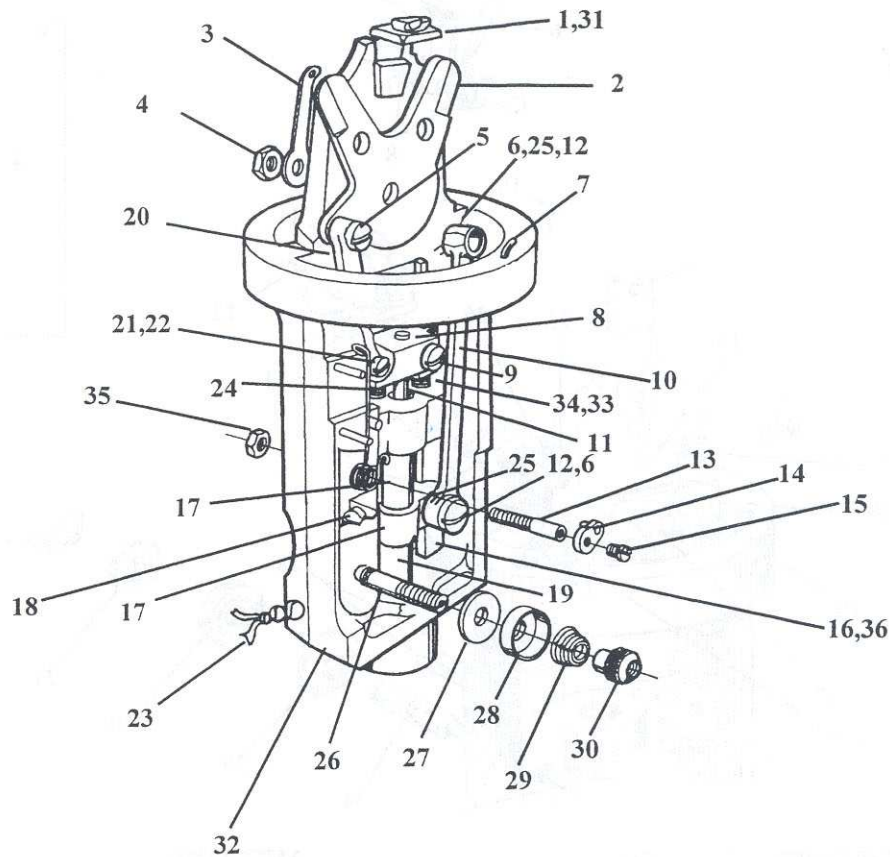
DET	PART NUMBER	DESCRIPTION	DET	PART NUMBER	DESCRIPTION
01	10.4210.0.000	Cord Weight Asm.	24	01.6001.0.000	Anchor
02	10.4208.0.000	Cord Pullback	25	01.6010.0.000	Pin
03	10.4209.0.000	Spring	26	01.6002.0.000	Anchor
04	01.2136.0.000	Screw	27	14.4201.0.000	Stud
05	14.4202.0.850	Trimmer/Retainer Asm.	28	01.6018.0.000	Pin
06	10.4212.0.000	Thread Guide	29	10.4032.0.000	Thin Disc
07	10.4010.2.000	Needle Guard	30	10.4031.0.000	Heavy Disc
08	01.2073.0.000	Screw	31	10.4221.0.000	Release Washer
09	01.2056.0.000	Screw	32	01.5059.0.000	Spring
10	14.4012.1.015	Throat Plate	33	10.4030.0.300	Nut
11	10.4215.0.000	Screw	34	10.4218.0.000	Stud
12	01.5043.0.000	Spring	35	10.4219.0.000	Release Rod
13	10.4211.0.000	Stop Wire	36	14.4202.0.000	Holder
14	14.4001.0.301	Race Subassembly	37	14.1703.0.000	Retainer/Knife Holder
15	14.4200.0.400	Trimmer Cam	38	14.1197.0.000	Trimmer Knife
16	01.2075.0.001	Screw	39	01.2667.0.000	Screw
17	01.3021.0.000	Nut	40	01.1577.0.000	Screw
18	01.2008.0.000	Screw	41	01.3451.0.000	Nut
19	10.4220.0.000	Adjustable Stop	42	01.5664.0.000	Spring
20	10.4217.0.000	Plunger	43	01.6280.0.000	Retaining Ring
21	01.5044.0.000	Spring	44	14.1198.0.000	Support Plate
22	01.2318.0.000	Screw	47	01.4203.0.000	Retaining Ring
23	01.4015.0.000	Washer	48	01.2365.0.000	Screw

Revised July 1999

U.S. Phone (800) 237-3323 Fax (800) 432-4303

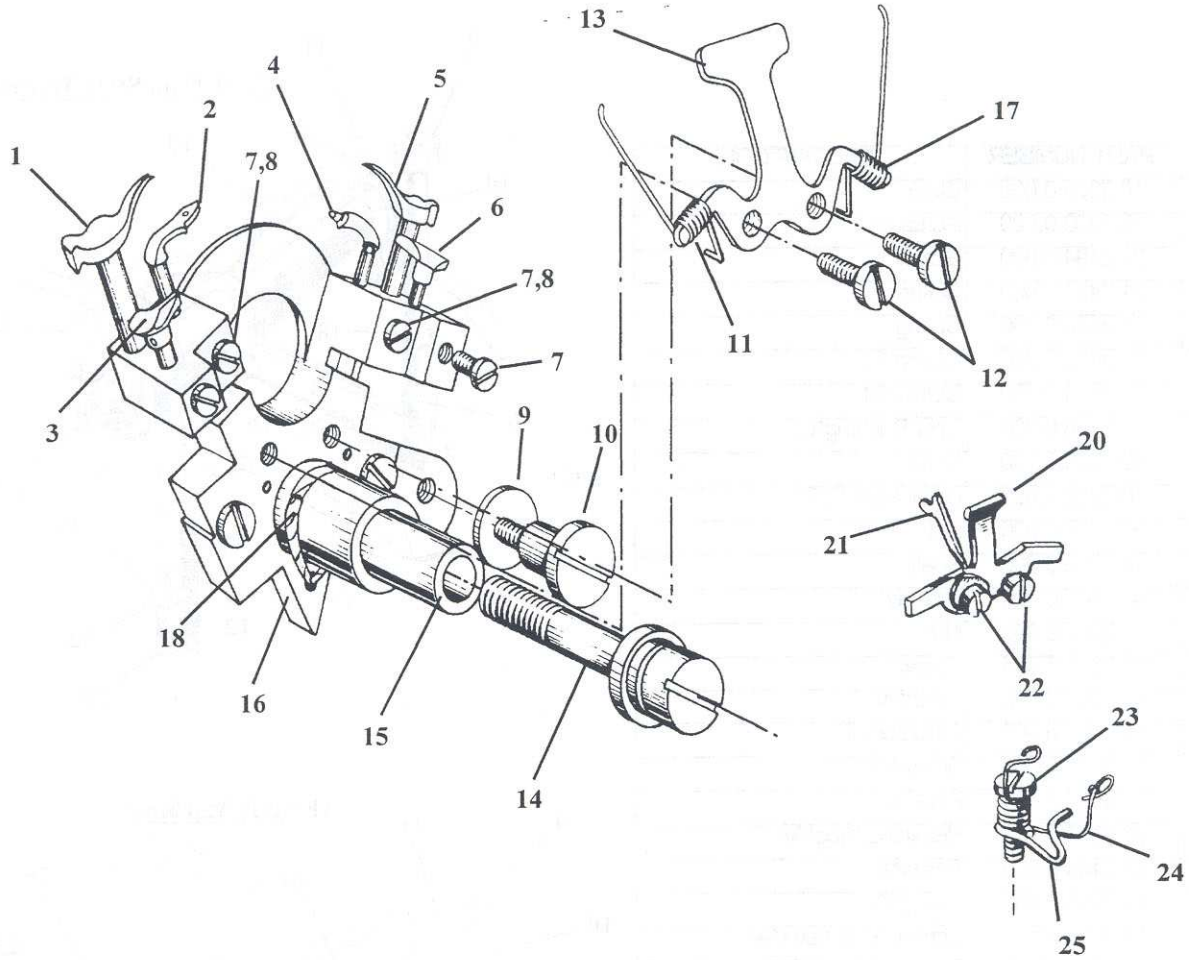
Outside U.S. Phone (804) 559-5000 Fax (804) 559-5290

RACE*AF



DET	PART NUMBER	DESCRIPTION	DET	PART NUMBER	DESCRIPTION
01	10.4012.0.001	Throat Plate*Waistband	19	14.4022.0.000	Spindle Looper
	10.4012.0.004	Throat Plate*AF	20	14.4015.0.000	Spreader Link
02	14.4011.0.200	Spreader Wedge*CB & CB/CA	21	10.4016.0.000	Screw
03	10.4035.0.000	Cord Guide	22	01.4012.0.000	Washer
04	01.3005.0.000	Nut	23	07.0401.0.009	Wick
05	10.4017.0.000	Screw	24	01.5027.0.000	Check Spring
06	01.7022.0.000	Bushing	25	01.4013.0.000	Washer
07	01.6002.0.000	Pin	26	10.4029.0.000	Stud
08	10.4018.0.000	Crosshead Spreader	27	10.4032.0.000	Thin Disc
09	01.2059.0.000	Screw	28	10.4031.0.000	Heavy Disc
10	14.4013.0.000	Looper Link	29	01.5028.0.000	Spring
11	10.4020.0.000	Spindle Spreader	30	10.4030.0.000	Nut
12	01.1006.0.000	Screw	31	01.2056.0.000	Screw
13	10.4037.0.000	Stud	32	14.4001.0.150	Race Asm.*AF-CA
14	10.4036.0.000	Check Spring Arm	33	10.4019.0.000	Pin
15	01.2081.0.000	Screw	34	01.5026.0.000	Spring
16	10.4026.0.000	Crosshead Guide	35	01.3001.0.000	Nut
17	10.4021.0.000	Crosshead Looper	36	01.2073.0.000	Screw
18	01.2024.0.000	Screw			

RACE - LOOPER CARRIER



DET	PART NUMBER	DESCRIPTION	DET	PART NUMBER	DESCRIPTION
01	14.4009.1.000	L.H. Spreader	11	01.5620.0.000	L.H. Spring
02	14.4005.0.030	Large Eye Looper	12	01.2073.0.000	Screw
03	10.4007.0.000	L.H. Spreader Stop	13	10.4010.2.000	Needle Guard
04	14.4004.0.000	Blind Looper	14	14.4201.0.000	Stud
05	14.4008.1.000	R.H. Spreader	15	10.4003.0.000	Bushing
06	10.4006.0.000	R.H. Spreader Stop	16	14.4002.0.000	Looper Carrier
07	01.2001.0.000	Screw	17	01.5619.0.000	R.H. Spring
08	10.4039.0.000	Felt Pad	18	07.0401.0.004	Wick
09	01.4013.0.000	Washer	19	14.9008.0.050	CB Carrier/Wedge Asm. (not shown)
10	01.1006.0.000	Screw			

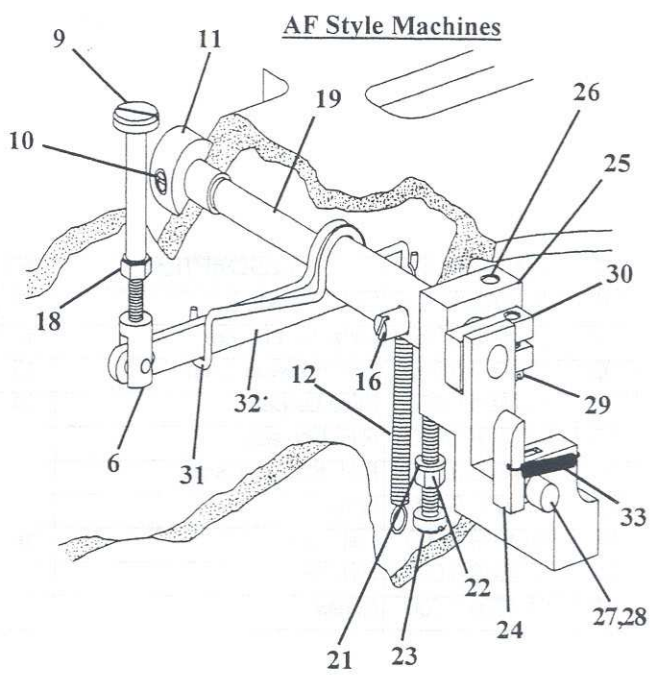
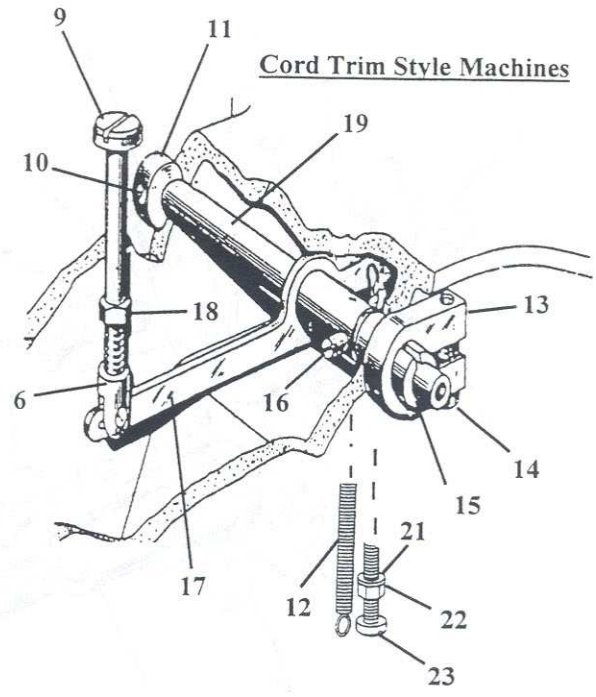
Revised July 1999

U.S. Phone (800) 237-3323 Fax (800) 432-4303

Outside U.S. Phone (804) 559-5000 Fax (804) 559-5290

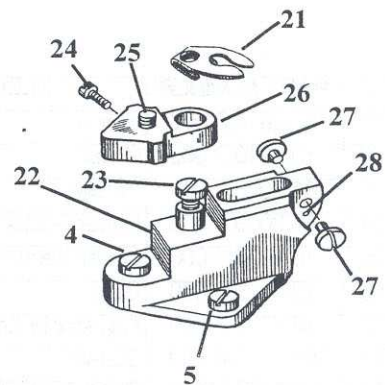
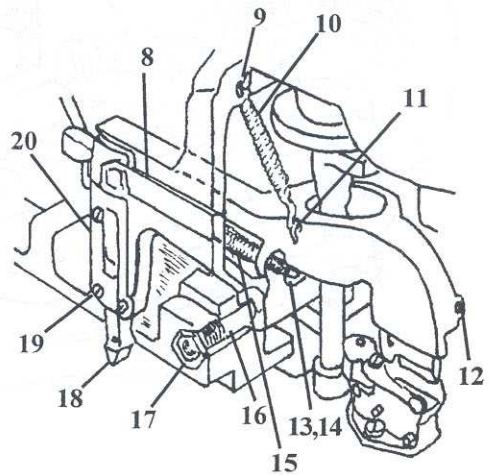
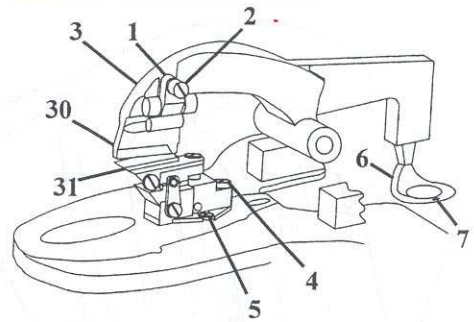
UPPER THREAD TRIMMER

DET	PART NUMBER	DESCRIPTION
06	10.3205.0.000	Clevis
09	10.3206.0.000	Actuator
10	01.2194.0.000	Screw
11	01.7435.1.000	Collar
12	01.5134.0.000	Spring
13	10.3090.0.000	Clamp*CT
14	01.2024.0.000	Screw*CT
15	01.7438.0.000	Split Bushing*CT
16	10.3203.0.000	Stop
17	10.3202.0.050	Lever Asm.*CT
18	01.3016.0.000	Nut
19	14.5019.0.000	Shaft
21	01.4407.0.000	Washer
22	01.3001.0.000	Nut
23	01.2247.0.004	Screw
24	10.3089.2.000	Latch*AF
25	14.3087.0.000	Actuator*AF
26	01.2171.0.000	Screw*AF
27	01.6528.0.000	Pivot*AF
28	01.6368.0.000	Retaining Ring*AF
29	01.2144.0.000	Screw*AF
30	14.3088.0.000	Clamp*AF
31	10.3086.0.000	Spring Hook Lever*AF
32	10.3085.0.050	Trimming Lever Asm*AF
33	01.5433.0.000	Spring*AF

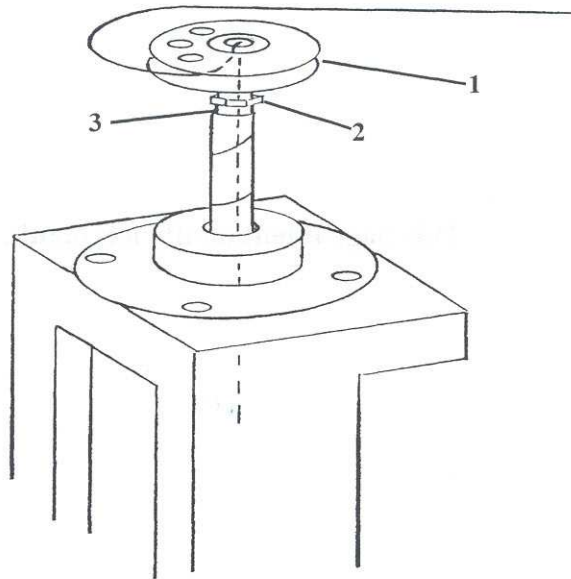


CUTTING / KNIFE HOLDER

DET	PART NUMBER	DESCRIPTION
01	10.1163.0.000	Clamp
02	01.1257.0.000	Screw
03	10.1068.1.050	Cutting Lever Asm. (CA)
04	01.2038.0.000	Screw
05	01.2039.0.000	Screw
06	10.3062.1.000	Cutting Cam
07	01.6983.0.001	Cutting Cam Pin
08	10.1072.0.000	Pressure Bar
09	01.6560.0.000	Anchor
10	01.5006.0.001	Spring
11	01.6006.0.000	Pin
12	01.6837.0.000	Pin
13	01.3001.0.000	Nut
14	01.4001.0.000	Washer
15	01.5061.0.000	Spring
16	10.1074.0.000	L.H./R.H. Pivot Stud
	10.1074.0.250	R.H. Pivot Stud*AF
17	01.3006.0.000	Nut
18	10.1071.2.000	Cutting Cam Follower (CA)
	10.1071.1.023	Cutting Cam Follower (CB/CA)
19	01.2013.0.000	Screw
20	10.1073.1.000	Cover Plate
21	14.3074.0.012	Cloth Lifter (CB)
22	10.3058.1.300	Knife Holder*CT
	10.3070.1.250	Knife Holder*AF
23	01.2039.0.000	Screw
24	01.2001.0.000	Screw
25	14.3002.0.000	Stud
26	10.3067.2.253	Spreader Block (CA)
27	01.2102.0.000	Screw
28	01.6034.0.000	Pin
30	See Chart, pg. 3-52	Cutting Steel
31	See Chart, pg. 3-52	Knife



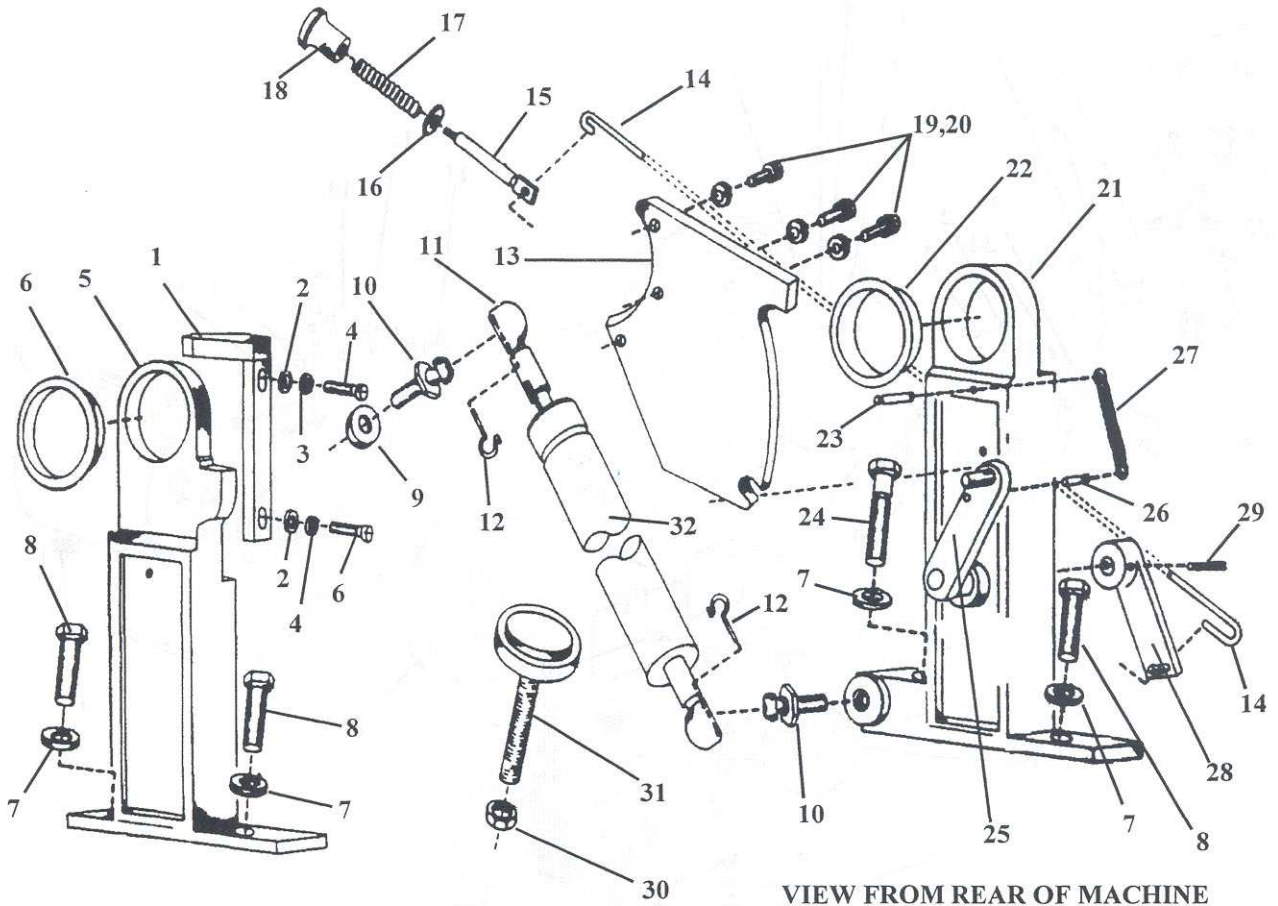
UPPER THREAD DRAW-OFF*CT



DET	PART NUMBER	DESCRIPTION
01	10.1032.3.300	Thread Draw-off
02	01.3021.0.000	Nut
03	01.1061.0.000	Stud

This page intentionally left blank.

SUPPORT DAMPING & LATCHING



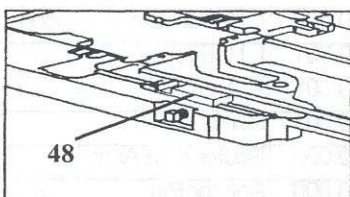
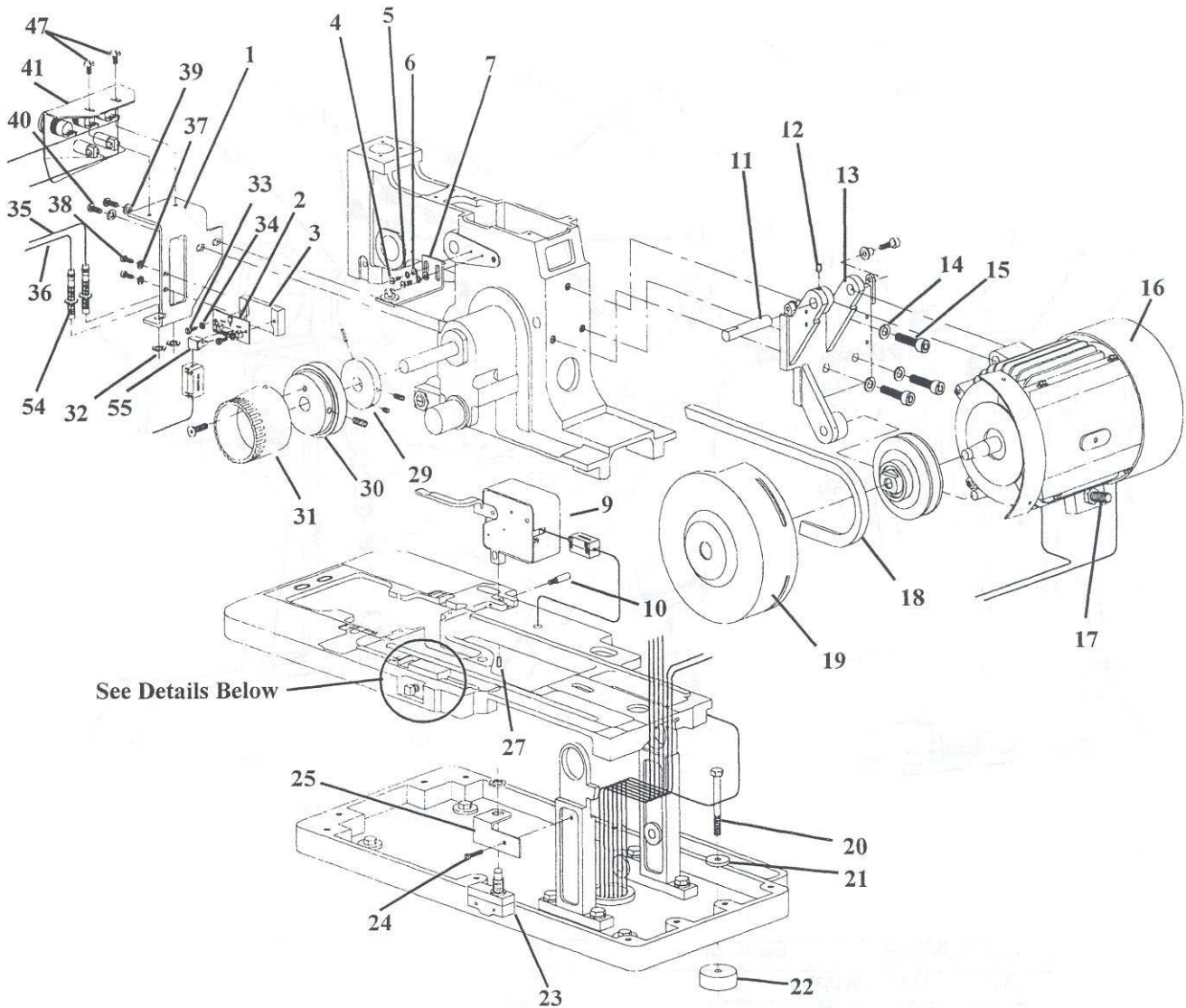
DET	PART NUMBER	DESCRIPTION	DET	PART NUMBER	DESCRIPTION
01	13.3083.0.000	Support	17	01.5061.0.000	Spring
02	01.4412.0.000	Washer	18	04.1791.0.000	Knob
03	01.4572.0.000	Lockwasher	19	01.4003.0.000	Lockwasher
04	01.2128.0.000	Screw	20	01.2493.0.000	Screw
05	13.3105.0.000	R.H. Cam Case Support	21	13.3102.0.000	L.H. Cam Case Support
06	13.3103.0.002	R.H. Bushing	22	13.3106.0.001	L.H. Bushing
07	01.4581.0.000	Lockwasher	23	01.6831.0.001	Anchor
08	01.2877.0.000	Screw	24	01.2877.0.003	Screw
09	01.4701.0.000	Washer	25	13.3103.0.000	Sector Arm Asm.
10	07.0086.0.001	Ball Stud	26	01.6831.0.000	Anchor Pin
11	07.0087.0.000	Ball Socket	27	01.5602.0.000	Spring
12	07.0087.0.001	Spring Clip	28	13.3104.0.000	Link Arm
13	13.3107.1.000	Sector	29	01.6569.0.002	Roll Pin
14	13.5024.0.000	Extension Link	30	01.3406.0.000	Nut
15	13.5025.1.000	Link	31	04.1283.0.001	Leveler
16	01.4002.0.000	Washer	32	07.6481.0.014	Hydraulic Dampener

Revised July 1999

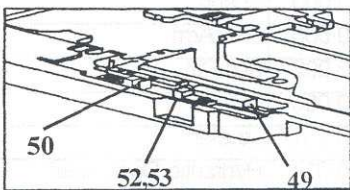
U.S. Phone (800) 237-3323 Fax (800) 432-4303

Outside U.S. Phone (804) 559-5000 Fax (804) 559-5290

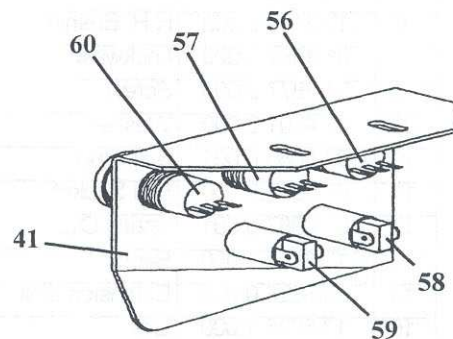
ELECTRICAL DRIVE SYSTEM (HEAD)



Cord Trim



Adjustable Fly
(430 & 470 Series)



COVERS & SUPPORTING MEMBERS

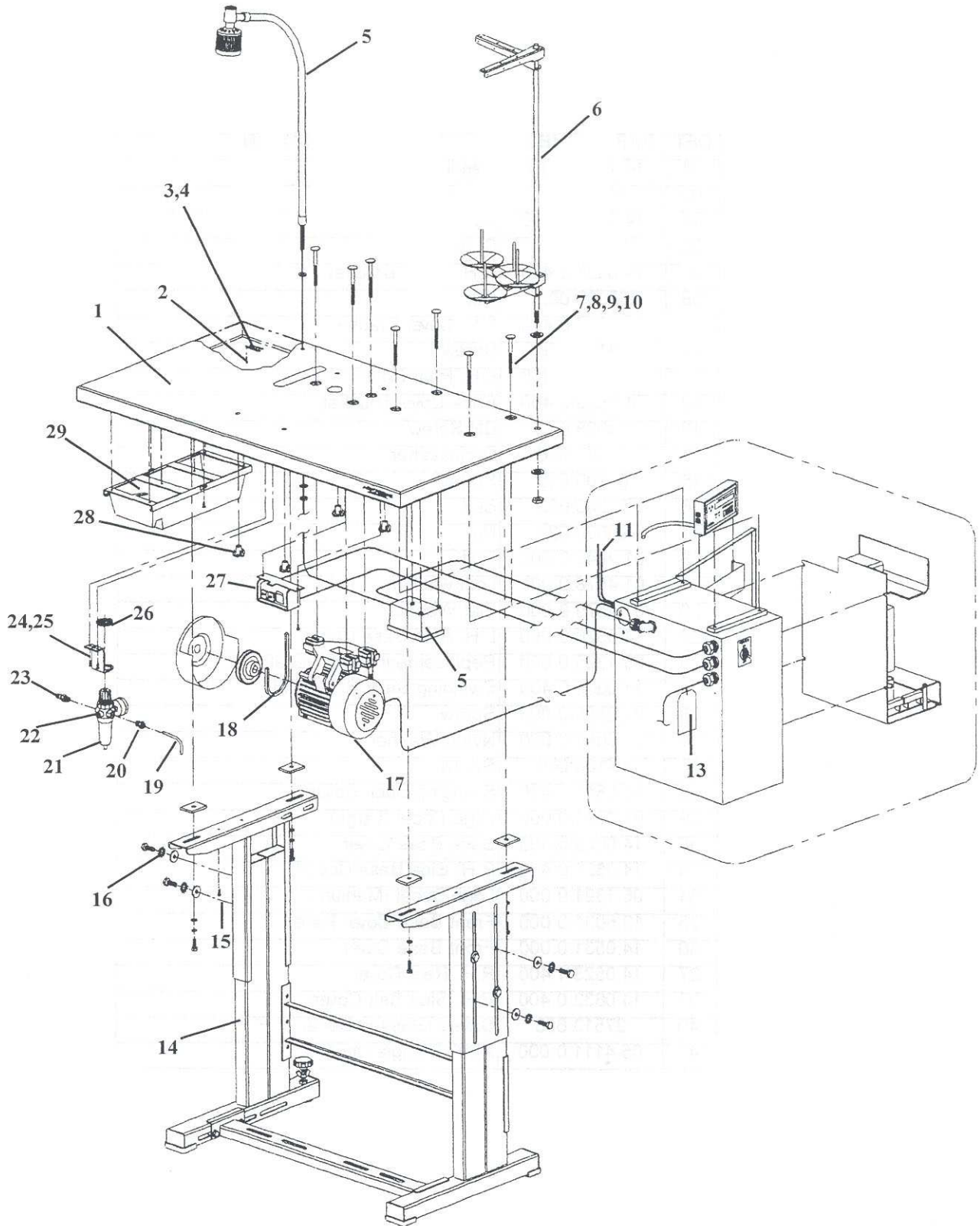
DET	PART NUMBER	DESCRIPTION
01	14.1407.0.000	Needle Bar Guard
02	04100.006	Screw
04	14.0525.0.400	Head Cover
05	04100.054	Screw
06	14.0626.0.400	R.H. Cover Bracket
08	06000.003	Nut
09	14.0627.0.400	L.H. Cover Bracket
10	04102.116	Screw
11	14.0524.1.400	L.H. Rear Cover
12	14.0629.0.400	Back Cover Bracket
13	01.1958.0.001	BH Screw
14	07102.006	Lockwasher
15	01000.019	Screw
16	01300.029	Bolt
17	06000.021	Nut
18	01.2845.0.000	Bolt
19	01.4578.0.000	Lockwasher
20	01.4579.0.000	Flat Washer
22	14.0526.0.050	L.H. Side Base Cover
23	05.1395.0.000	Replacement Parts Decal
24	14.0630.0.400	Swinging Back Cover Link
25	01.2885.0.003	Screw
26	01.5684.0.000	Nylon Washer
27	04100.060	Screw
28	14.0541.1.400	Swinging Back Cover
29	05.1393.0.000	Logo Decal (Large)
30	14.0628.0.400	Back Base Cover
33	14.0527.0.400	R.H. Side Base Cover
34	05.1391.0.000	Logo Decal (Medium)
35	13.5031.0.000	Front Base Cover Panel
36	14.0531.0.000	Front Base Cover
37	14.0523.1.400	R.H. Rear Cover
38	14.0632.0.400	R.H. Side Belt Cover
40	27513.603	Safety Glasses Decal
41	05.4111.0.000	AMF Triangle Decal

Revised July 1999

U.S. Phone (800) 237-3323 Fax (800) 432-4303

Outside U.S. Phone (804) 559-5000 Fax (804) 559-5290

REGULAR TABLE



REGULAR TABLE

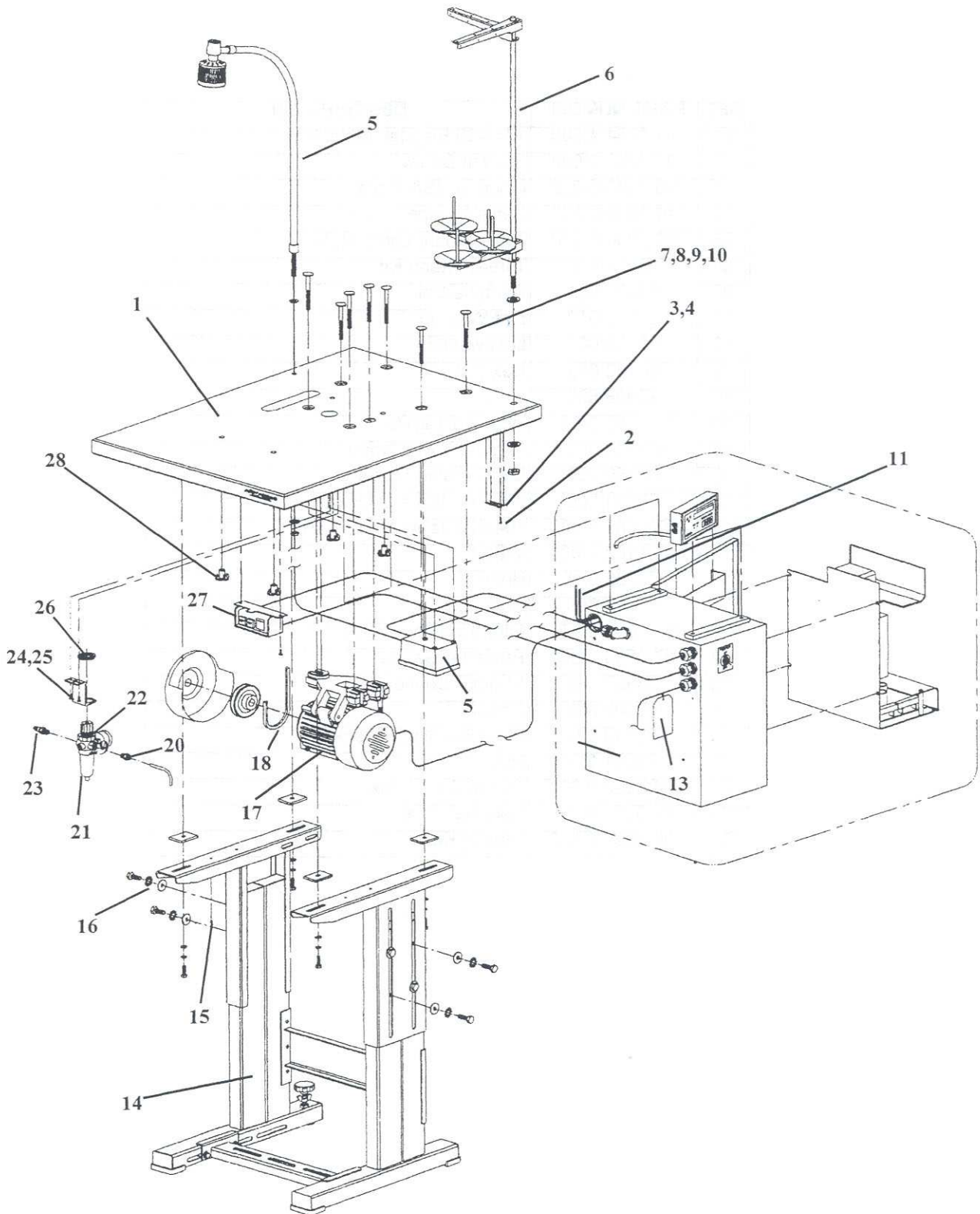
DET	PART NUMBER	DESCRIPTION
01	04.1554.4.000	104-400 Regular Table Top
02	01.1786.0.000	Drywall Screw
03	05.1199.0.000	Made in USA Plate
04	14.1416.0.003	Serial Number Plate
05	07.6004.0.800	Table Mount Lamp (12V)
06	17.0094.6.009	Thread Stand Kit
07	04300.001	Carriage Bolt
08	07012.010	Flat Washer
09	07102.003	Lockwasher
10	06020.003	Hex Nut
11	22998.507	Hose
13	04.1085.0.000	Warning Tag+C31
14	04.9000.0.123	Regular Table Frame Kit
15	02250.006	Self-Tapping Screw
16	07204.009	3/8 Ext. Tooth Lockwasher
17	06.5087.0.000	104-400 Table Motor Asm.
18	05.1102.0.000	V-Belt
19	22998.604	Hose
20	25527.609	Connector
21	06.5092.0.000	Filter/Regulator Asm.
22	07.0569.0.000	Pressure Gauge
23	25527.049	Straight Connector
24	02100.002	Screw
25	06.5690.0.000	Filter/Regulator Bracket
26	06.5091.0.000	Nut
27	06.5103.0.000	On/Off Switchbox
28	01.9000.0.910	Hammer Drive
29	04.9000.0.812	Drawer Kit

Revised July 1999

U.S. Phone (800) 237-3323 Fax (800) 432-4303

Outside U.S. Phone (804) 559-5000 Fax (804) 559-5290

NARROW TABLE



NARROW TABLE

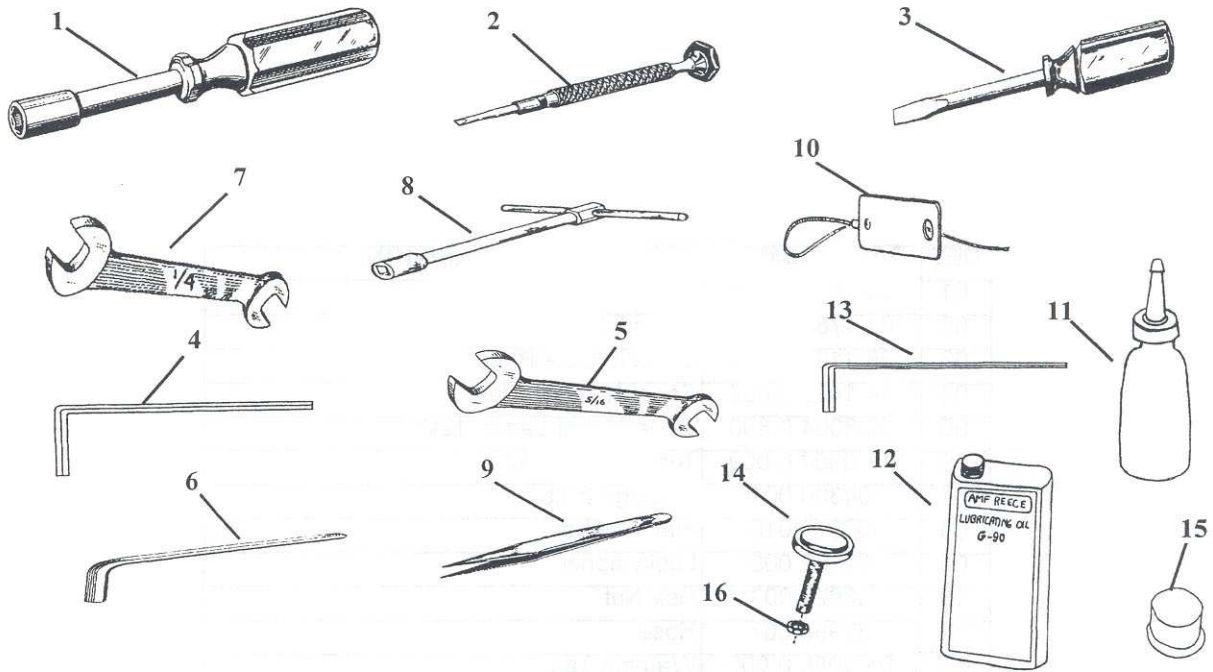
DET	PART NUMBER	DESCRIPTION
01	04.1555.4.000	104-400 Regular Table Top
02	01.1786.0.000	Drywall Screw
03	05.1199.0.000	Made in USA Plate
04	14.1416.0.003	Serial Number Plate
05	07.6004.0.800	Table Mount Lamp (12V)
06	17.0094.6.009	Thread Stand Kit
07	04300.001	Carriage Bolt
08	07012.010	Flat Washer
09	07102.003	Lockwasher
10	06020.003	Hex Nut
11	22998.507	Hose
13	04.1085.0.000	Warning Tag
14	04.9000.0.122	Regular Table Frame Kit
15	02250.006	Self-Tapping Screw
16	07204.009	3/8 Ext. Tooth Lockwasher
17	06.5087.0.000	104-400 Table Motor Asm.
18	05.1102.0.000	V-Belt
19	22998.604	Hose
20	25527.609	Connector
21	06.5092.0.000	Filter/Regulator Asm.
22	07.0569.0.000	Pressure Gauge
23	25527.049	Straight Connector
24	02100.002	Screw
25	06.5690.0.000	Filter Regulator Bracket
26	06.5091.0.000	Nut
27	06.5103.0.000	On/Off Switchbox
28	01.9000.0.910	Hammer Drive

Revised July 1999

U.S. Phone (800) 237-3323 Fax (800) 432-4303

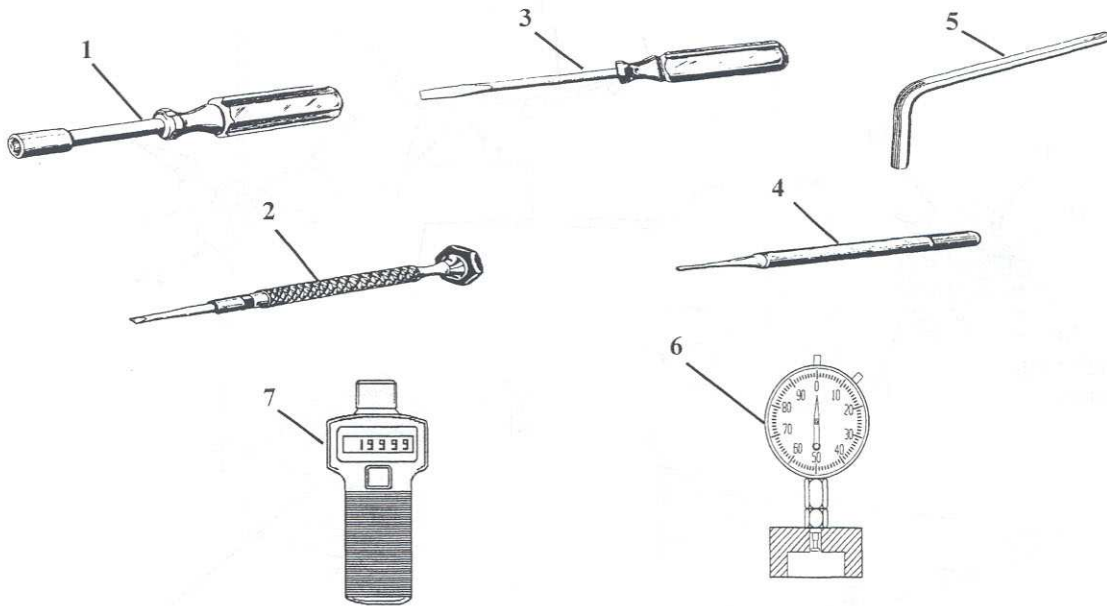
Outside U.S. Phone (804) 559-5000 Fax (804) 559-5290

TOOLS, SUPPLIES & ACCESSORIES



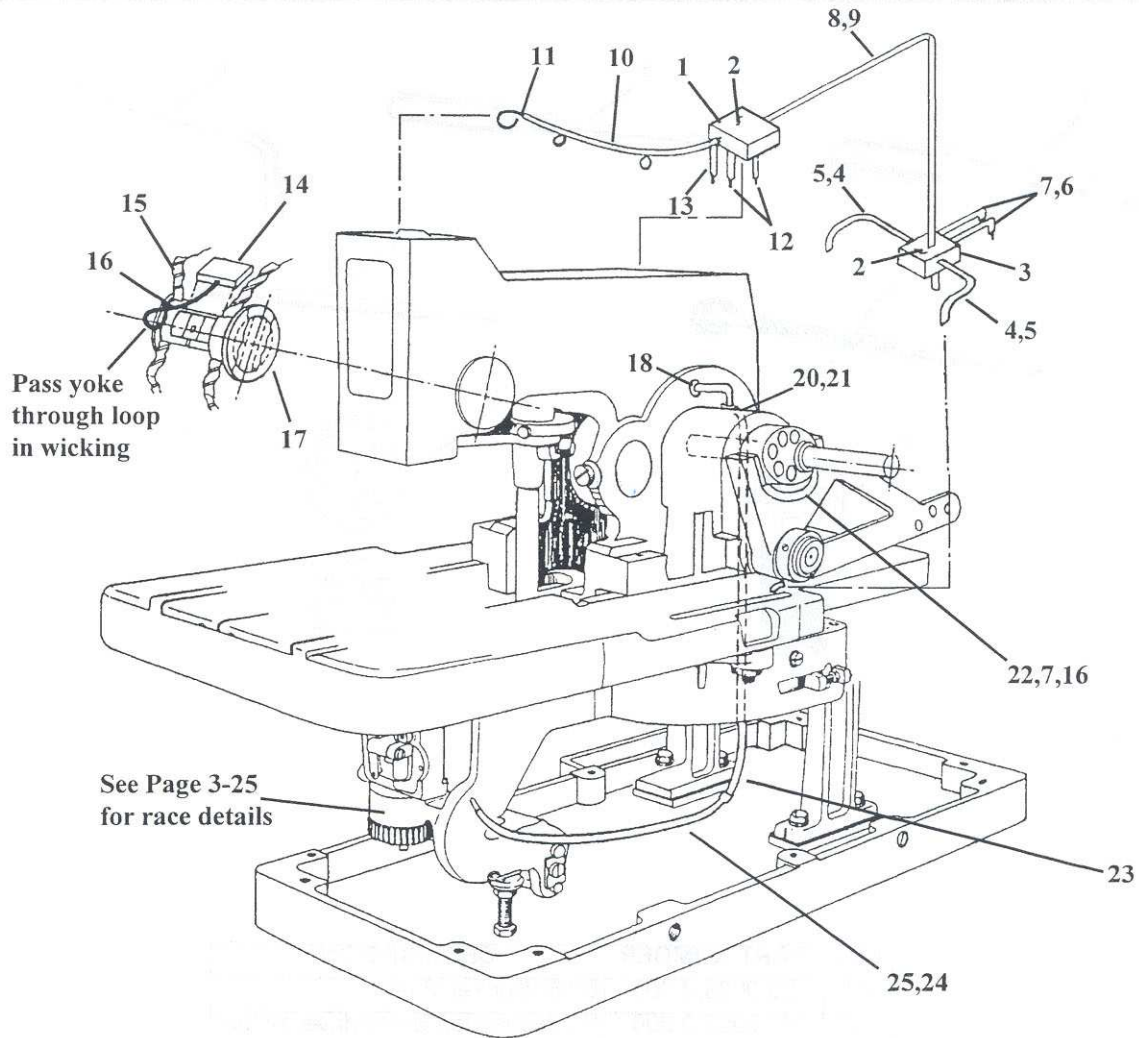
DET	PART NUMBER	DESCRIPTION
01	03.0007.0.000	1/4" Socket Wrench
02	04.0038.0.000	Screwdriver
03	03.0024.0.187	Screwdriver 3" Blade
04	03.0054.0.000	3/32" Hex Wrench
05	03.0018.0.000	5/16" Wrench
06	03.0162.0.000	5/64" Hex Wrench
07	03.0019.0.000	1/4" Wrench
08	03.0048.1.000	7/16" Sq. Socket Wrench
09	03.0013.0.000	Tweezers
10	03.0020.0.000	Threading Wire
11	03.0022.0.000	Oiler
12	05.0090.0.000	Lubricating Oil 8 oz.
13	03.0410.0.000	6mm Hex Wrench
14	04.1283.0.001	Leveler
15	04.1712.0.000	Red Cap Plug
16	01.3406.0.000	5/16-18 x .5 Hex Nut

OPTIONAL TOOLS & ACCESSORIES



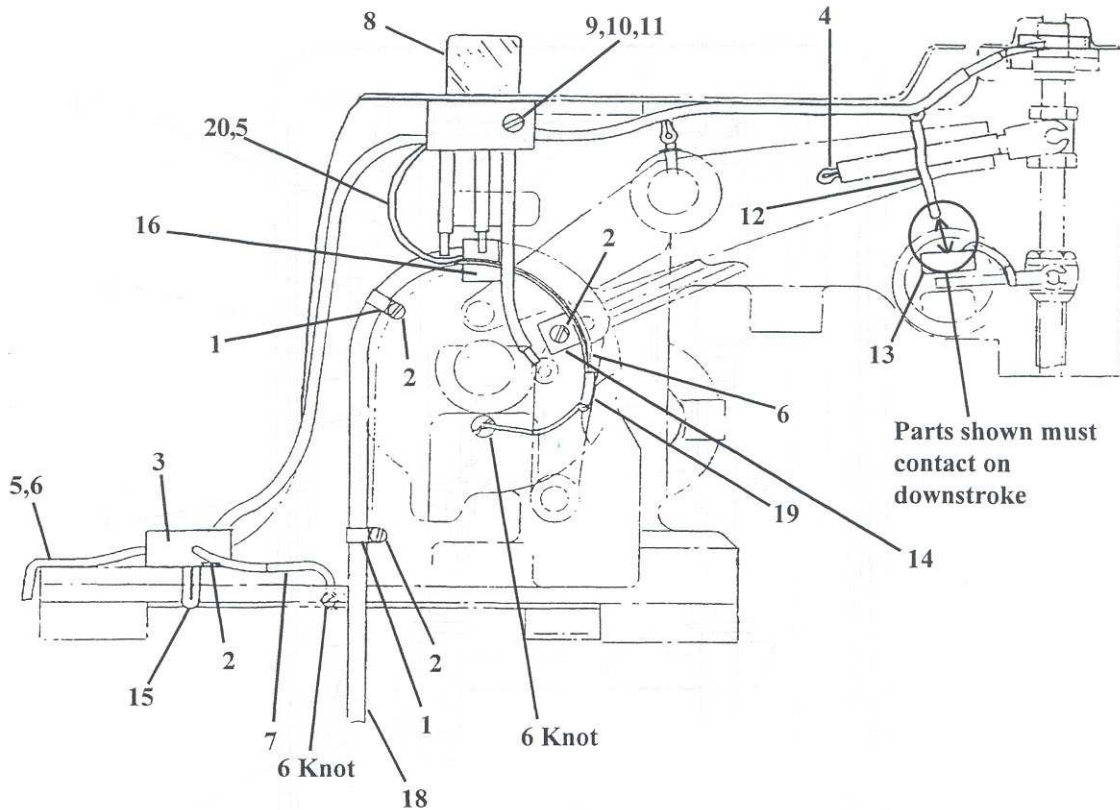
DET	PART NUMBER	DESCRIPTION
01	03.0033.0.000	5/16" Socket Wrench
02	03.0053.0.000	Double Ended Screwdriver Blade
03	03.0188.0.000	3/16" Screwdriver
	03.0189.0.016	1/4" Screwdriver
04	03.0045.0.000	Pin Wrench
05	03.0404.0.000	.035 Allen Wrench
06	05.0702.0.000	Timing Gauge
07	05.0701.0.000	Hand Held Tachometer

OILING SYSTEM



DET	PART NUMBER	DESCRIPTION	DET	PART NUMBER	DESCRIPTION
01	14.1020.0.050	Upper Lever Reservoir Asm.	13	07.0400.0.007	Wicking
02	14.1003.0.000	Reservoir Oil Pad	14	14.1015.0.000	Vibrator Barrel Oil Pad
03	14.1008.0.000	Lower Oil Reservoir	15	07.0401.0.004	Wicking
04	04.2040.0.003	Tubing	16	07.0400.0.003	Wicking
05	07.0401.0.007	Wicking	18	14.1010.0.000	Ring Insert
06	04.2040.0.005	Tubing	20	05.1105.0.000	Oil Inlet
07	07.0401.0.009	Wicking	21	14.1023.0.000	Ring Insert
08	07.0059.1.008	Tubing	22	14.1029.0.000	Cam Follower Oil Pad
09	04.0514.0.000	Wicking	23	14.1005.0.000	Oil Transfer Tube
10	14.1009.0.000	Tubing	24	07.0059.1.010	Tubing
11	07.0400.0.016	Wicking	25	07.0400.0.024	Wicking
12	07.0400.0.005	Wicking			

OILING SYSTEM



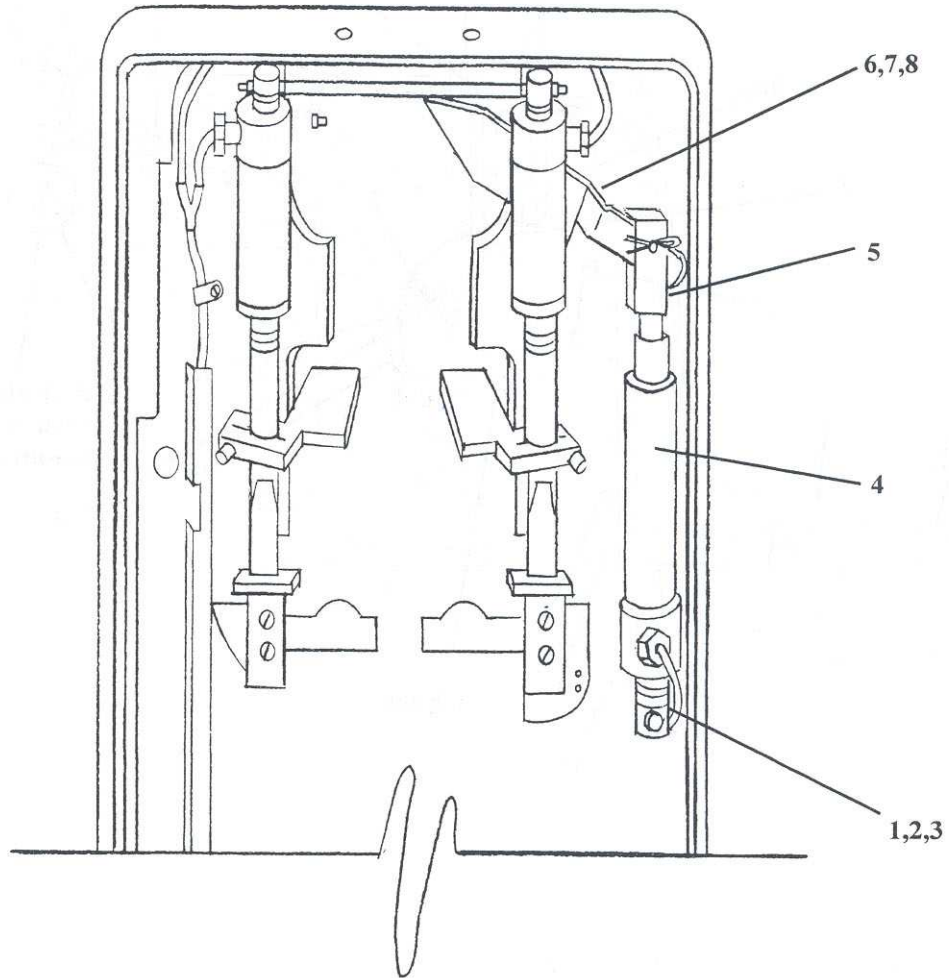
DET	PART NUMBER	DESCRIPTION	DET	PART NUMBER	DESCRIPTION
01	07.0204.0.001	Clip	11	01.4029.0.000	Washer
02	01.2241.0.001	Screw	12	07.0400.0.007	Wicking
03	14.1008.0.000	Lower Oil Reservoir	13	14.1015.0.000	Vibrator Barrel Oil Pad
04	14.1030.0.000	Tubing Asm.	14	14.1006.0.000	Oil Pad Retainer
05	04.2040.0.005	Tubing	15	07.0400.0.004	Wicking
06	07.0401.0.009	Wicking	16	14.1007.0.000	Oil Pad Retainer
07	07.0400.0.010	Wicking	17	14.1013.0.000	Needle Cam Oil Pad
08	14.1320.0.000	Oil Sight Gauge	18	14.1005.0.000	Oil Pad
09	01.2811.0.000	Screw	19	14.1007.0.001	L-Shaped Oil Pad
10	01.3401.0.000	Nut	20	07.0401.0.007	Wicking

Revised July 1999

U.S. Phone (800) 237-3323 Fax (800) 432-4303

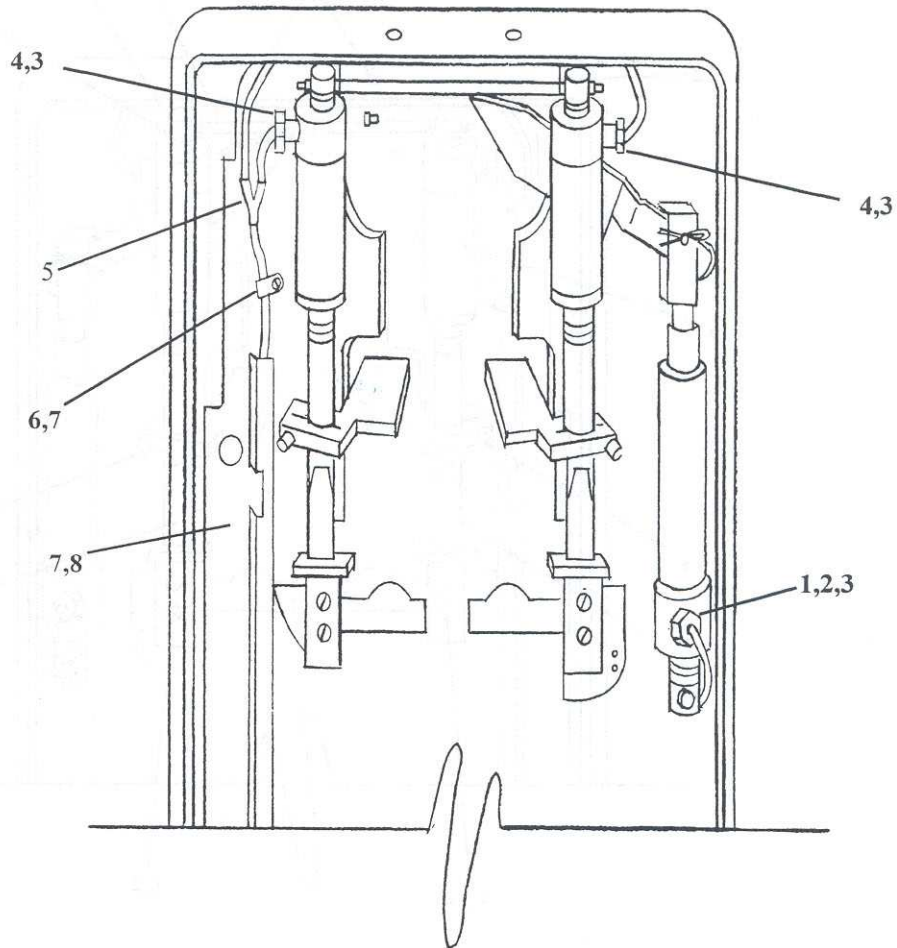
Outside U.S. Phone (804) 559-5000 Fax (804) 559-5290

PNEUMATICS



DET	PART NUMBER	DESCRIPTION
01	25379.270	E-Ring
02	01.2422.0.000	Screw
03	14.2976.0.000	Support
04	14.4220.0.016	Cylinder (Shears)
05	23913.016	Clevis
06	14.4223.0.000	Shears Link
07	14.4224.0.000	Shoulder Screw
08	14.4225.0.000	Lever

PNEUMATICS



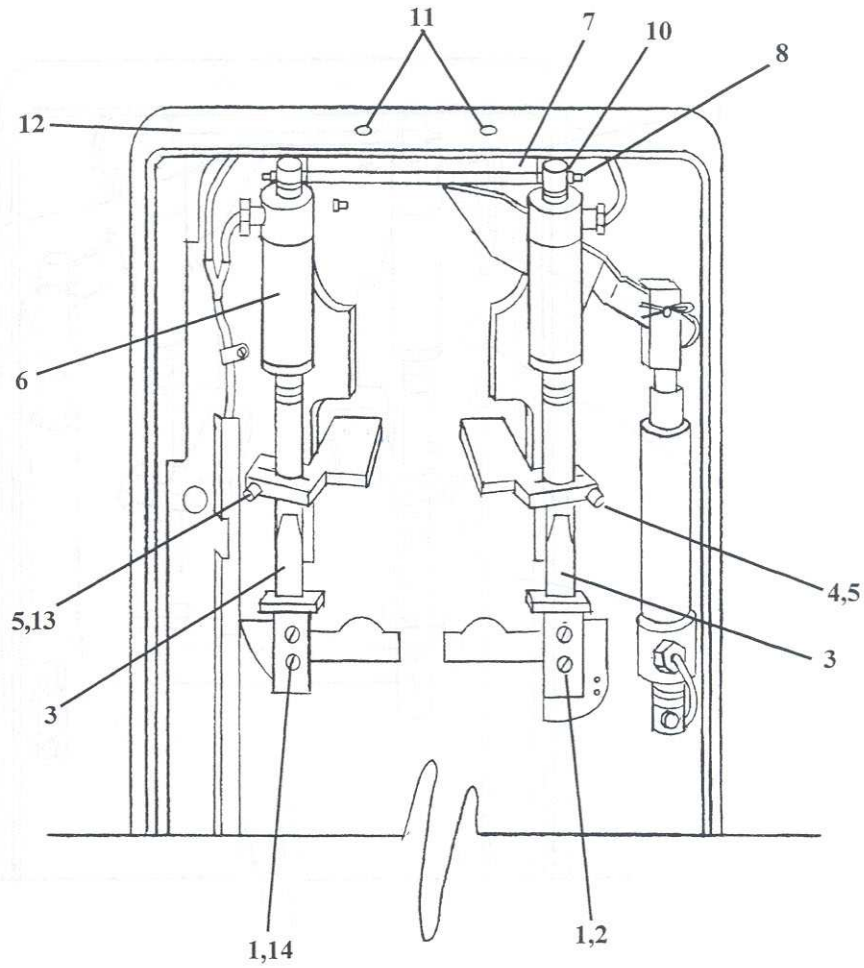
DET	PART NUMBER	DESCRIPTION
01	25521.569	Elbow
02	25521.591	Reducer
03	22998.607	1/8 Tubing
04	25521.572	1/8 Connector
05	25521.588	Barbed Y
06	04.0172.0.250	Cable Clamp
07	01.2411.0.000	Screw
08	14.2990.0.000	Tube/Wire Cover

Revised July 1999

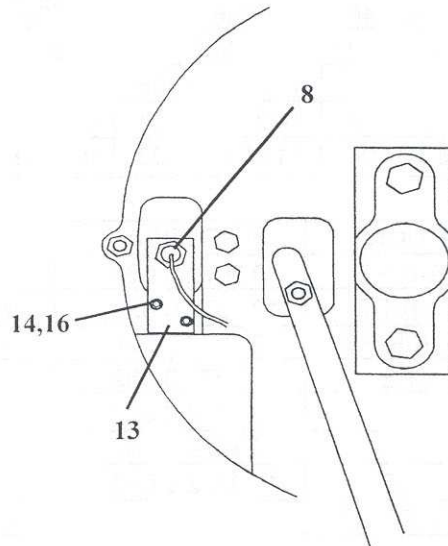
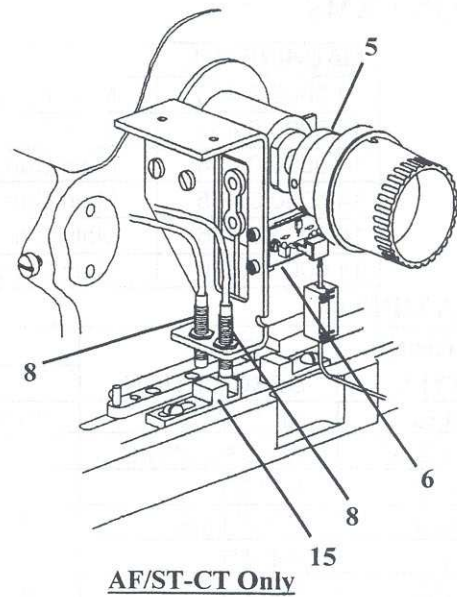
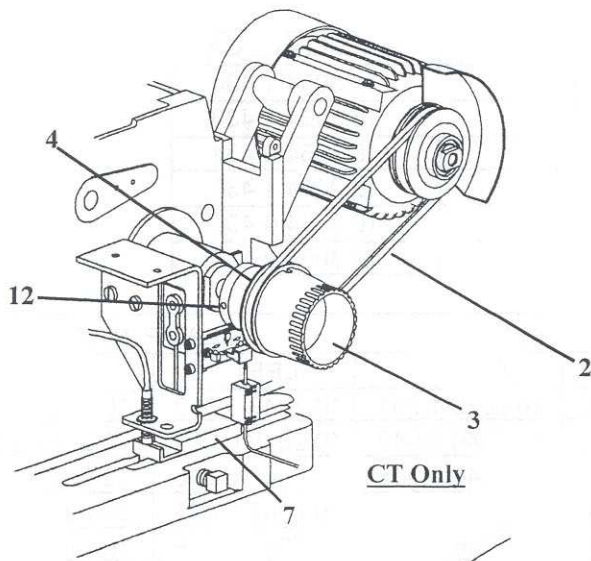
U.S. Phone (800) 237-3323 Fax (800) 432-4303

Outside U.S. Phone (804) 559-5000 Fax (804) 559-5290

PNEUMATICS



DET	PART NUMBER	DESCRIPTION
01	01.2039.0.000	Screw
02	14.2070.0.000	R.H. Paddle Pin Guide
03	14.2981.0.000	Guide Arm
04	14.2968.0.000	R.H. Clamp Arm Paddle
05	01.2493.0.000	Screw
06	14.4221.0.000	Cylinder (Clamping)
07	14.2961.0.400	Mounting Bracket
08	14.2966.0.401	Shoulder Pin
9	14.2919.0.000	Cover
10	01.2411.0.000	Screw
11	01.2672.0.000	Screw
12	16.2001.0.070	Bedplate
13	14.2967.0.000	L.H. Clamp Arm Paddle
14	14.2969.0.000	L.H. Paddle Pin Guide



DET	PART NUMBER	DESCRIPTION
01	01.2998.0.000	Adjusting Rod (not shown)
02	06.5102.0.000	V-Belt
03	13.1240.0.000	Hand Grip
04	14.1239.0.400	Stitch Drive Pulley
05	14.2998.0.000	Magnetic Disc Asm.
06	06.5100.0.000	P.C. Board
07	14.2995.0.000	Start/Stop Block
08	06.0775.0.000	Sensor (Home/Sew)
12	03102.025	Set Screw
13	14.3130.0.002	Home Sensor Block Bracket
14	03.6000.8.106	Screw
15	14.2401.0.000	Home Sensor Block
16	01.4528.0.005	Washer

Revised July 1999

U.S. Phone (800) 237-3323 Fax (800) 432-4303

Outside U.S. Phone (804) 559-5000 Fax (804) 559-5290

CHARTS

MAIN CAMS

MACHINE NO.	STYLE DESCRIPTION	SPAULDITE CAM
14.0000.0.430	Main Cam*AF-CB/CA-R-RE	16.3064.1.430
14.0000.0.433	Main Cam*CT-CA-5/8-RE	16.3064.1.433
14.0000.0.434	Main Cam*CT-CA-5/8-LE	16.3064.0.434
14.0000.0.435	Main Cam*CT-CA-3/4-RE	16.3064.1.435
14.0000.0.436	Main Cam*CT-CA-7/8-RE	16.3064.0.436
14.0000.0.470	Main Cam*AF-CA-ST-RE-CT	16.3064.0.170

CLAMPING

MACHINE STYLE	STYLE DESCRIPTION	CLAMP FEET		CLAMP MATS	
		LEFT	RIGHT	LEFT	RIGHT
14-430	AF-CB/CA	10.2050.1.750	10.2046.1.751	10.2048.0.002	10.2044.0.002
14-430W	AF-CB/CA*W/B	10.2050.0.042	10.2046.0.042	10.2048.0.001	10.2044.0.001
14-433	5/8" CT	14.2050.0.045	14.2046.0.045	10.2048.0.015	10.2044.1.015
14-434	5/8" CT-LE	14.2050.0.045	14.2046.0.045	10.2048.0.015	10.2044.1.015
14-435	3/4" CT	14.2050.0.040	14.2046.0.040	10.2048.0.015	10.2044.1.015
14-436	7/8" CT	14.2050.0.042	14.2046.0.040	10.2048.0.016	10.2044.1.016
14-470	ST-CT	10.2050.0.406	10.2046.0.405	10.2048.0.015	10.2044.1.015
14-470	ST-CT*W/B	14.2050.0.402	14.2046.0.401	10.2048.0.001	10.2044.0.001
14-470	ST-CT*H/R	14.2050.0.404	14.2046.0.403	10.2048.0.015	10.2044.1.015

KNIVES

MACHINE NO.	STYLE DESCRIPTION	KNIFE P/N	DESCRIPTION
14.0000.0.430	104-400 AF-CB/CA-R-RE	10.3072.0.023	Knife*1-1/4NE
14.0000.0.430	104-400 AF-CB/CA-R-RE	10.3072.0.024	Knife*1-1/4 RE
14.0000.0.430W	104-400*WB*CB/CA-R-RE	10.3072.0.024	Knife*1-1/4 RE
14.0000.0.433	104-400 CT-CA-5/8-RE	10.3072.0.059	Knife*5/8 CT-RE
14.0000.0.434	104-400 CT-CA-5/8-LE	10.3072.0.067	Knife*5/8 CT-LE
14.0000.0.435	104-400 CT-CA-3/4-RE	10.3072.0.060	Knife*3/4 CT-RE
14.0000.0.436	104-400 CT-CA-7/8-RE	10.3072.0.062	Knife*7/8 CT-RE
14.0000.0.470	104-400 AF-CA-ST-RE-CT	14.3072.0.170	Knife*ST/CT-CA

CUTTING STEELS

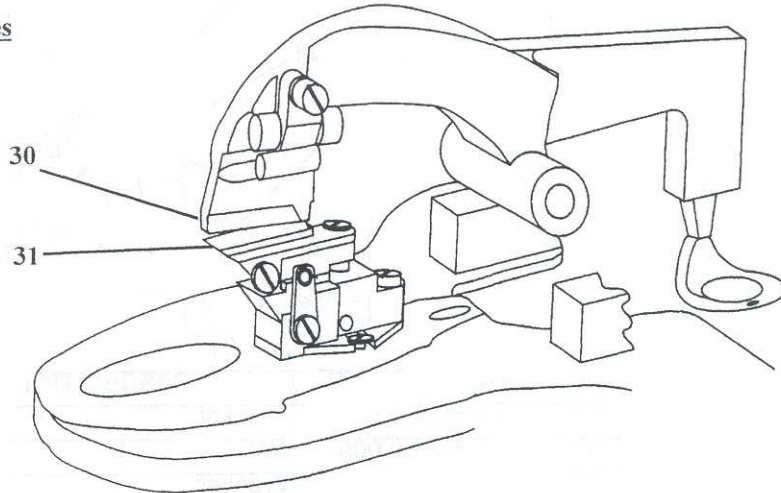
MACHINE NO.	STYLE DESCRIPTION	CUTTING STEEL P/N	DESCRIPTION
14.0000.0.430	104-400 AF-CB/CA-R-RE	10.1069.0.002	Cutting Steel*5/8 R-RE-CA
14.0000.0.430	104-400 AF-CB/CA-R-RE	10.1069.0.003	Cutting Steel*7/8 R-RE-CA
14.0000.0.430	104-400 AF-CB/CA-R-RE	10.1069.0.004	Cutting Steel*3/4 R-RE-CA
14.0000.0.430W	104-400*WB*CB/CA-R-RE	10.1069.0.003	Cutting Steel*3/4 R-RE-CA
14.0000.0.430W	104-400*WB*CB/CA-R-RE	10.1069.0.005	Cutting Steel*1 R-RE-CA
14.0000.0.430W	104-400*WB*CB/CA-R-RE	10.1069.0.007	Cutting Steel*1-1/4 R-RE-CA
14.0000.0.430W	104-400*WB*CB/CA-R-RE	10.1069.0.016	Cutting Steel*1-1/4 R-NE-CA
14.0000.0.433	104-400 CT-CA-5/8-RE	10.1069.0.020	Cutting Steel*5/8 CT
14.0000.0.434	104-400 CT-CA-5/8-LE	10.1069.0.020	Cutting Steel*5/8 CT
14.0000.0.435	104-400 CT-CA-3/4-RE	10.1069.0.021	Cutting Steel*3/4 CT
14.0000.0.436	104-400 CT-CA-7/8-RE	10.1069.0.022	Cutting Steel*7/8 CT
14.0000.0.470	104-400 AF-CA-ST-RE-CT 5/8	14.1069.0.002	Cutting Steel*5/8 CT
14.0000.0.470	104-400 AF-CA-ST-RE-CT 3/4	14.1069.0.033	Cutting Steel*3/4 CT
14.0000.0.470	104-400 AF-CA-ST-RE-CT 7/8	14.1069.0.004	Cutting Steel*7/8 CT

Revised July 1999

PARTS SPECIAL FOR SHORT TRAVEL CT MODELS (470)

FOR STANDARD PARTS, SEE PAGE 3-30

Cutting Steels and Knives



DET	PART NUMBER	DESCRIPTION
30	See Chart, pg. 3-52	Cutting Steel
31	See Chart, pg. 3-52	Knife

Revised July 1999

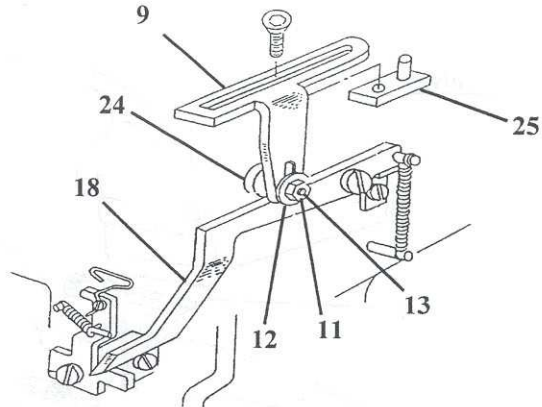
U.S. Phone (800) 237-3323 Fax (800) 432-4303

Outside U.S. Phone (804) 559-5000 Fax (804) 559-5290

PARTS SPECIAL FOR SHORT TRAVEL CT MODELS (470)

FOR STANDARD PARTS, SEE PAGE 3-23

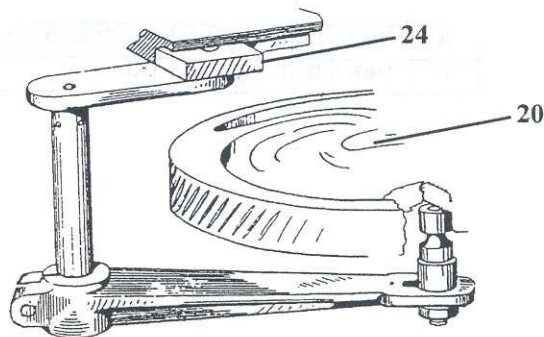
Thread Draw-Off



DET	PART NUMBER	DESCRIPTION
09	14.5602.0.000	Bracket
11	01.3001.0.000	Nut
12	01.4011.0.000	Washer
13	14.5608.0.000	Stud
18	14.3118.0.000	Actuator
24	01.7058.0.000	Roll
25	14.5014.0.000	Guide Plate

FOR STANDARD PARTS, SEE PAGE 3-8

Main Cam

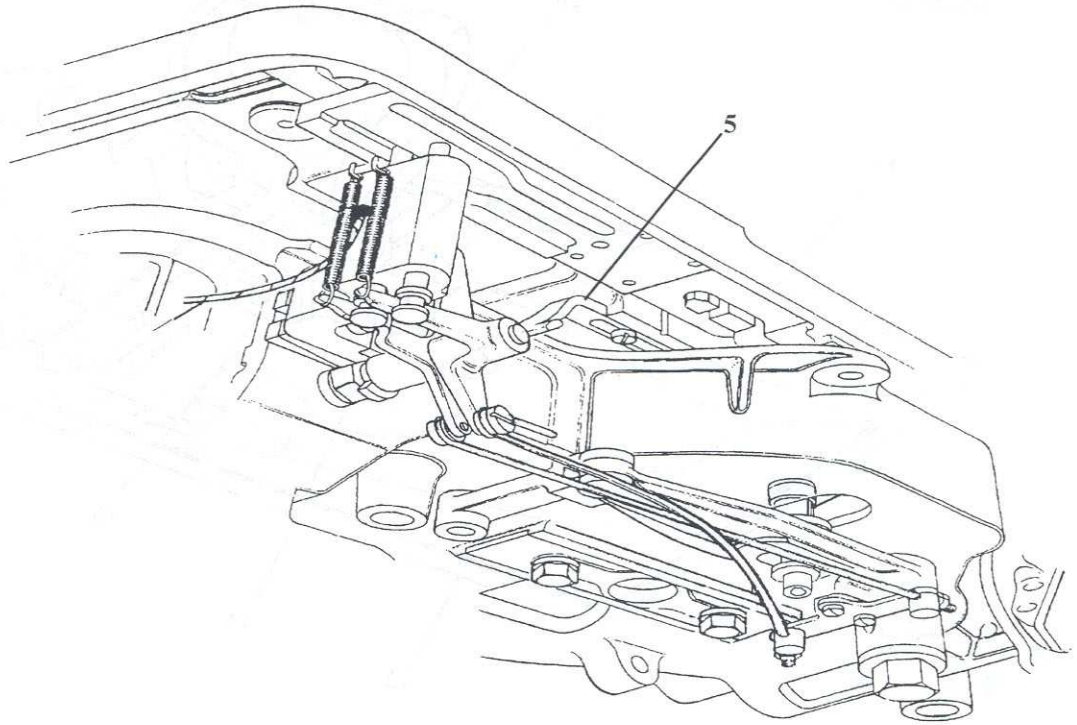


DET	PART NUMBER	DESCRIPTION
20	See Chart, pg. 3-50	Main Cam
24	14.3033.0.000	Pivot Block

PARTS SPECIAL FOR SHORT TRAVEL CT MODELS (470)

FOR STANDARD PARTS, SEE PAGE 3-22

Flybar Control



DET	PART NUMBER	DESCRIPTION
05	14.5601.0.000	Bracket

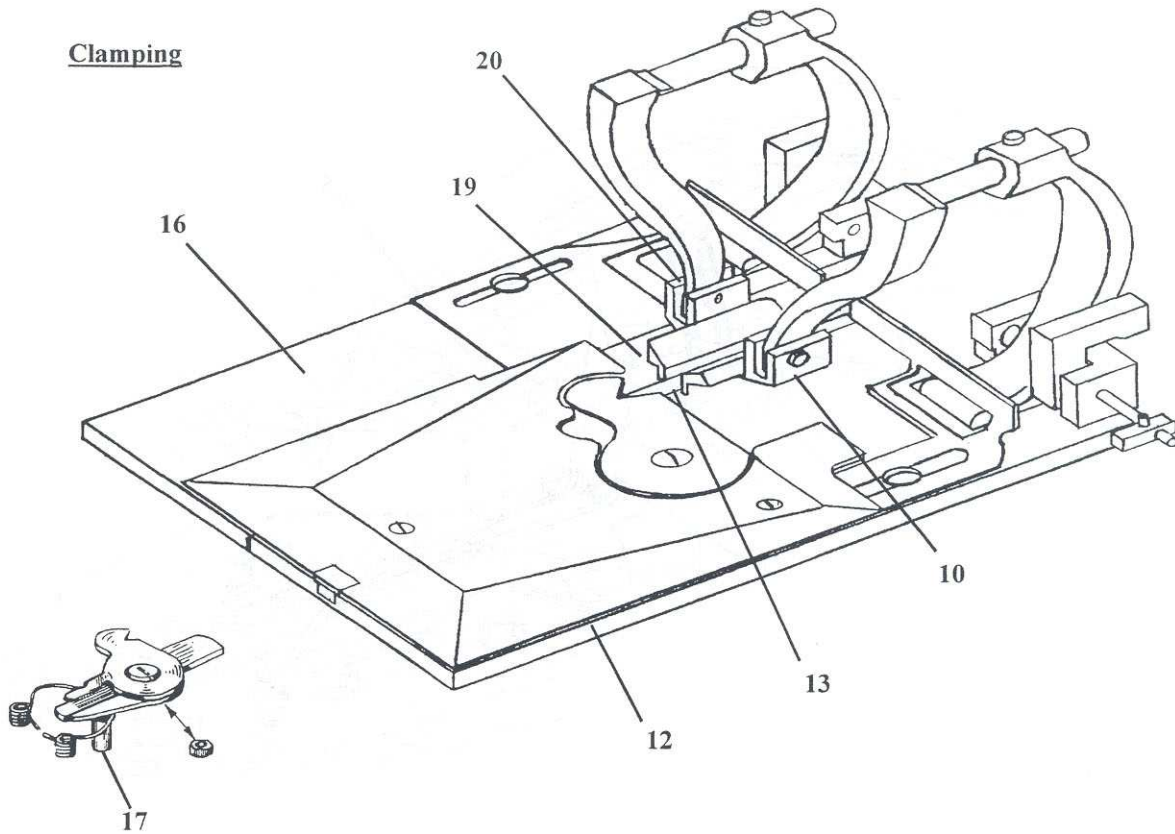
Revised July 1999

U.S. Phone (800) 237-3323 Fax (800) 432-4303

Outside U.S. Phone (804) 559-5000 Fax (804) 559-5290

PARTS SPECIAL FOR SHORT TRAVEL CT MODELS (470)

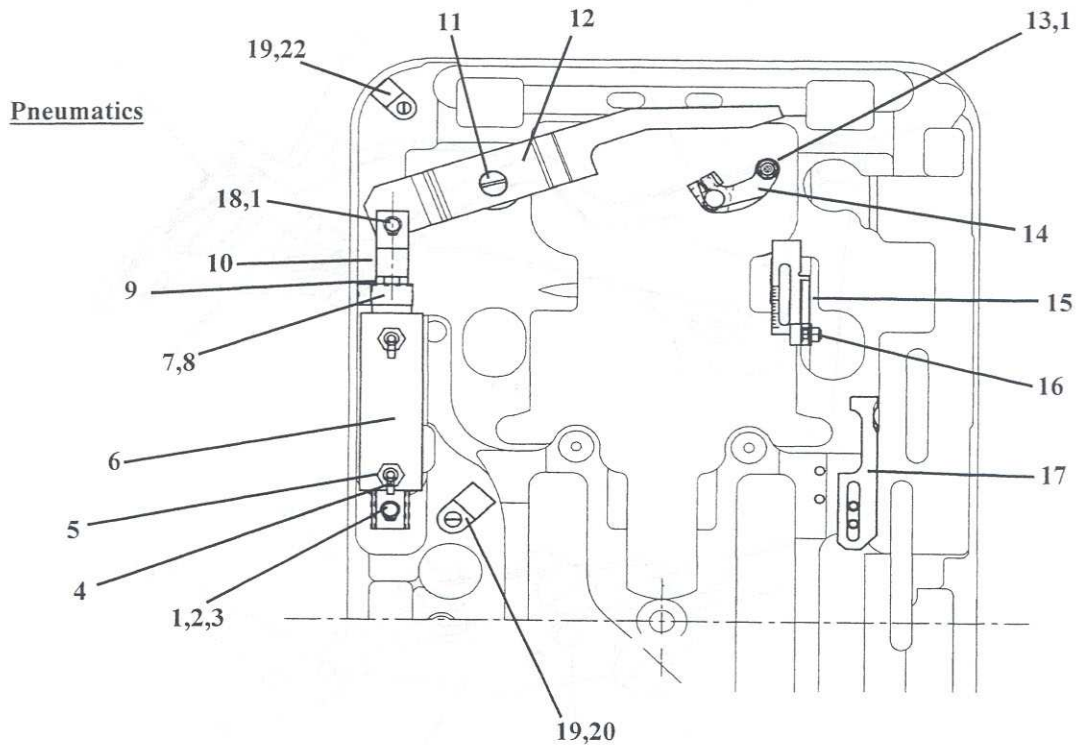
FOR STANDARD PARTS, SEE PAGES 3-1 through 3-5



DET	PART NUMBER	DESCRIPTION
10	See Chart, pg. 3-52	R.H. Clamp Foot
12	14.2043.1.301	R.H. Clamp Plate
13	See Chart, pg. 3-52	R.H. Clamp Mat
16	14.2047.0.019	L.H. Clamp Plate
17	10.2204.0.600	Actuator
19	See Chart, pg. 3-52	L.H. Clamp Mat
20	See Chart, pg. 3-52	L.H. Clamp Foot

PARTS SPECIAL FOR SHORT TRAVEL CT MODELS (470)

FOR STANDARD PARTS, SEE PAGES 3-46 through 3-48



DET	PART NUMBER	DESCRIPTION	DET	PART NUMBER	DESCRIPTION
01	25379.270	Retaining Ring	12	14.5603.0.000	Shears Lever
02	01.2422.0.000	Screw	13	14.5609.0.000	Pivot Roller
03	14.2976.0.000	Cylinder Support Pin	14	14.5605.0.050	Pivot Roller Asm.
04	25521.591	Reducer	15	14.5602.0.000	Actuator Bracket
05	25521.569	Right Angle Tee	16	14.5608.0.000	Shoulder Screw
06	14.5611.0.000	Cylinder	17	14.5601.0.000	Bracket
07	14.5606.0.000	Piston Guide	18	14.5610.0.000	Clevis Pin
08	01.2700.0.000	Screw	19	01.2247.0.002	Screw
09	01.3404.0.000	Nut	20	04.1223.0.003	Clamp
10	14.5607.0.000	Clevis	22	07.6600.0.003	Cable Clamp
11	14.4224.0.000	Shoulder Screw			

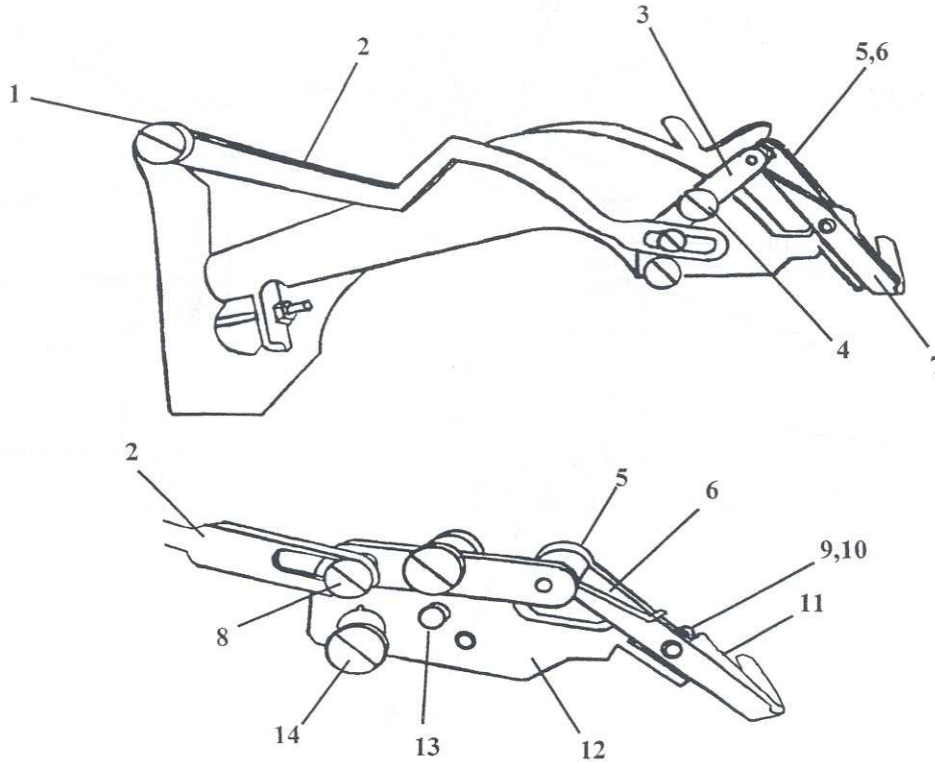
Revised July 1999

U.S. Phone (800) 237-3323 Fax (800) 432-4303

Outside U.S. Phone (804) 559-5000 Fax (804) 559-5290

PARTS SPECIAL FOR SHORT TRAVEL CT MODELS (470)

Upper Thread Pick-up



DET	PART NUMBER	DESCRIPTION	DET	PART NUMBER	DESCRIPTION
01	10.1214.0.000	Screw	8	10.1209.0.000	Screw
02	14.1206.0.000	Upper Thread Pick-up Link	9	01.2053.0.000	Screw
03	14.1205.1.000	Pivot Screw	10	10.1211.0.000	Felt Retainer
04	10.1210.1.000	Link	11	10.1213.0.000	Felt
05	10.1208.0.000	Screw	12	14.1204.1.000	Adjusting Plate
06	01.5045.1.000	Spring	13	01.6009.0.000	Pivot Pin
07	14.1207.0.000	Pick-up Hook	14	01.2006.0.000	Adjusting Screw

INDEX

PART NUMBER	PAGE	DET	PART NUMBER	PAGE	DET	PART NUMBER	PAGE	DET
01000.013			03100.008			01.1151.0.000		
01000.013	3-37	27	03100.008	3-35	12	01.1151.0.000	3-21	24
01000.019	3-39	15	03102.025	3-51	12	01.1241.0.001	3-15	28
01000.041	3-35	15	04000.076	3-35	24	01.1257.0.000	3-30	02
01200.031	3-37	25	04100.006	3-39	02	01.1432.0.000	3-22	08
01300.029	3-39	16	04100.020	3-37	22	01.1447.0.000	3-22	04
02100.002	3-41	24	04100.054	3-37	20	01.1470.0.000	3-10	03
02100.002	3-43	24	04100.054	3-39	05	01.1557.0.000	3-3	39
02250.003	3-37	30	04100.060	3-39	27	01.1568.0.001	3-35	27
02250.006	3-41	15	04102.116	3-39	10	01.1568.0.001	3-6	03
02250.006	3-43	15	04300.001	3-37	51	01.1574.0.002	3-13	17
22966.606	3-37	36	04300.001	3-41	07	01.1577.0.000	3-25	40
22998.507	3-41	11	04300.001	3-43	07	01.1594.0.000	3-22	14
22998.507	3-43	11	06000.003	3-39	08	01.1594.0.000	3-24	15
22998.604	3-41	19	06000.021	3-39	17	01.1594.0.000	3-29	16
22998.604	3-43	19	06020.003	3-41	10	01.1661.0.001	3-15	02
22998.627	3-49	03	06020.003	3-43	10	01.1728.0.401	3-35	04
23913.016	3-48	05	06020.004	3-37	31	01.1774.0.000	3-23	23
24117.015	3-9	20	06020.017	3-37	48	01.1781.0.000	3-11	10
25379.270	3-48	01	07002.002	3-37	29	01.1786.0.000	3-41	02
25379.270	3-57	01	07002.006	3-37	32	01.1786.0.000	3-43	02
25521.560	3-37	12	07012.003	3-37	49	01.1889.0.000	3-17	22
25521.562	3-37	11	07012.010	3-37	50	01.1958.0.001	3-39	13
25521.569	3-49	01	07012.010	3-41	08	01.1983.0.000	3-17	31
25521.572	3-49	04	07012.010	3-43	08			
25521.588	3-49	05	07100.005	3-37	35	01.2001.0.000		
25521.591	3-49	02	07102.003	3-35	14	01.2001.0.000	3-20	09
25521.591	3-57	05	07102.003	3-41	09	01.2001.0.000	3-27	07
25521.951	3-57	04	07102.003	3-43	09	01.2001.0.000	3-30	24
25526.662	3-37	05	07102.006	3-39	14	01.2006.0.000	3-22	27
25527.049	3-41	23	07102.007	3-37	28	01.2006.0.000	3-58	14
25527.049	3-43	23	07204.009	3-41	16	01.2007.0.000	3-21	05
25527.608	3-37	09	07204.009	3-43	16	01.2008.0.000	3-17	21
25527.609	3-41	20				01.2008.0.000	3-25	18
25527.609	3-43	20	01.1006.0.000			01.2008.0.000	3-9	10
			01.1006.0.000	3-26	12	01.2011.0.000	3-17	01
			01.1006.0.000	3-27	10	01.2013.0.000	3-30	19
27511.164			01.1020.1.000	3-1	08	01.2014.0.000	3-29	01
27511.164	3-37	46	01.1020.1.000	3-3	15	01.2015.0.000	3-3	18
27511.196	3-37	42	01.1021.0.000	3-1	04	01.2016.0.000	3-13	02
27513.602	3-37	14	01.1028.0.008	3-11	14	01.2016.0.000	3-29	08
27513.603	3-39	40	01.1051.1.000	3-23	19	01.2022.0.000	3-11	01
27513.605	3-37	18	01.1061.0.000	3-31	03	01.2024.0.000	3-26	18
27513.608	3-37	39	01.1114.0.000	3-20	10	01.2024.0.000	3-28	14
28211.088	3-37	44	01.1137.0.000	3-3	22	01.2028.0.000	3-11	17
28211.558	3-37	40	01.1147.0.002	3-12	04	01.2028.0.000	3-29	03
28211.706	3-35	23	01.1147.0.003	3-15	32			
30065.403	3-37	41						

INDEX

PART NUMBER	PAGE	DET	PART NUMBER	PAGE	DET	PART NUMBER	PAGE	DET
01.2031.0.000			01.2193.0.000			01.2886.0.000		
01.2031.0.000	3-22	20	01.2193.0.000	3-15	20	01.2886.0.000	3-35	47
01.2031.0.000	3-24	18	01.2194.0.000	3-28	10	01.2886.0.002	3-23	14
01.2038.0.000	3-30	04	01.2241.0.001	3-23	17	01.2998.0.000	3-35	17
01.2039.0.000	3-20	15	01.2241.0.001	3-35	33	01.2998.0.000	3-51	01
01.2039.0.000	3-30	05	01.2241.0.001	3-35	37	01.3001.0.000	3-23	11
01.2039.0.000	3-30	23	01.2241.0.001	3-47	02	01.3001.0.000	3-26	35
01.2039.0.000	3-50	01	01.2247.0.002	3-19	02	01.3001.0.000	3-28	22
01.2041.0.000	3-12	11	01.2247.0.002	3-57	19	01.3001.0.000	3-3	01
01.2041.0.000	3-24	04	01.2247.0.004	3-28	23	01.3001.0.000	3-30	13
01.2043.0.000	3-22	06	01.2249.0.000	3-11	05	01.3001.0.000	3-54	11
01.2051.0.000	3-3	04	01.2312.0.000	3-3	32	01.3005.0.000	3-12	15
01.2053.0.000	3-3	14	01.2312.0.000	3-35	52	01.3005.0.000	3-17	26
01.2053.0.000	3-5	10	01.2318.0.000	3-25	22	01.3005.0.000	3-24	10
01.2053.0.000	3-58	09	01.2324.0.000	3-13	08	01.3005.0.000	3-26	04
01.2056.0.000	3-25	09	01.2344.0.000	3-12	18	01.3006.0.000	3-30	17
01.2056.0.000	3-26	31	01.2347.0.000	3-8	15	01.3007.0.000	3-8	04
01.2059.0.000	3-23	08	01.2362.0.000	3-20	19	01.3010.0.000	3-21	10
01.2059.0.000	3-26	09	01.2365.0.000	3-25	48	01.3012.0.000	3-17	29
01.2063.0.000	3-21	22	01.2386.0.000	3-8	10	01.3013.0.000	3-13	10
01.2067.0.000	3-8	11	01.2411.0.000	3-49	07	01.3015.0.000	3-8	12
01.2073.0.000	3-25	08	01.2411.0.000	3-50	10	01.3016.0.000	3-22	19
01.2073.0.000	3-26	36	01.2419.0.000	3-15	08	01.3016.0.000	3-28	18
01.2073.0.000	3-27	12	01.2422.0.000	3-48	02	01.3016.0.000	3-3	23
01.2074.0.000	3-5	15	01.2422.0.000	3-57	02	01.3019.0.000	3-11	12
01.2075.0.000	3-9	12	01.2436.0.000	3-9	14	01.3020.0.000	3-21	03
01.2075.0.001	3-25	16	01.2493.0.000	3-33	20	01.3021.0.000	3-25	17
01.2075.0.001	3-5	01	01.2493.0.000	3-50	05	01.3021.0.000	3-31	02
01.2079.0.000	3-15	17	01.2543.0.000	3-12	16	01.3021.0.000	3-5	13
01.2079.0.000	3-22	16	01.2557.0.001	3-15	27	01.3025.0.000	3-24	06
01.2081.0.000	3-23	06	01.2557.0.001	3-3	06	01.3042.0.000	3-11	08
01.2081.0.000	3-26	15	01.2558.0.000	3-3	40	01.3059.0.000	3-8	06
01.2085.0.000	3-13	13	01.2599.0.003	3-15	31	01.3400.0.000	3-21	29
01.2088.0.000	3-22	28				01.3401.0.000	3-47	10
			01.2659.0.000			01.3404.0.000	3-57	09
01.2102.0.000			01.2659.0.000	3-15	29	01.3406.0.000	3-33	30
01.2102.0.000	3-30	27	01.2667.0.000	3-25	39	01.3406.0.000	3-44	16
01.2104.0.000	3-5	19	01.2672.0.000	3-50	11	01.3451.0.000	3-25	41
01.2111.0.001	3-3	11	01.2700.0.000	3-57	08	01.4001.0.000	3-30	14
01.2111.0.001	3-5	24	01.2729.0.000	3-3	43	01.4002.0.000	3-33	16
01.2128.0.000	3-33	04	01.2811.0.000	3-47	09	01.4003.0.000	3-33	19
01.2130.0.000	3-12	06	01.2845.0.000	3-39	18	01.4005.0.000	3-13	09
01.2136.0.000	3-25	04	01.2871.0.000	3-35	40	01.4006.0.000	3-13	14
01.2144.0.000	3-23	21	01.2877.0.000	3-33	08	01.4009.0.001	3-9	02
01.2144.0.000	3-28	33	01.2877.0.003	3-33	24	01.4010.0.000	3-21	01
01.2146.0.000	3-12	14	01.2885.0.003	3-39	25	01.4011.0.000	3-23	12
01.2171.0.000	3-28	30				01.4011.0.000	3-54	12

INDEX

PART NUMBER	PAGE	DET	PART NUMBER	PAGE	DET	PART NUMBER	PAGE	DET
01.4012.0.000			01.4747.0.000			01.6001.0.000		
01.4012.0.000	3-26	22	01.4747.0.000	3-9	06	01.6001.0.000	3-25	24
01.4013.0.000	3-26	25	01.4751.0.000	3-21	25	01.6002.0.000	3-25	26
01.4013.0.000	3-27	09	01.4904.0.000	3-9	17	01.6002.0.000	3-26	07
01.4015.0.000	3-25	23	01.4905.0.000	3-9	07	01.6006.0.000	3-30	11
01.4018.0.000	3-8	09	01.5002.0.000	3-20	12	01.6009.0.000	3-58	13
01.4019.0.000	3-11	02	01.5003.0.000	3-17	19	01.6010.0.000	3-25	25
01.4029.0.000	3-47	11	01.5005.0.001	3-21	14	01.6013.0.000	3-23	02
01.4038.0.000	3-3	24	01.5006.0.001	3-30	10	01.6018.0.000	3-25	28
01.4042.0.000	3-12	05	01.5023.0.000	3-1	11	01.6031.0.000	3-22	31
01.4046.0.000	3-22	30	01.5026.0.000	3-26	34	01.6034.0.000	3-30	28
01.4067.0.000	3-1	02	01.5027.0.000	3-26	24	01.6074.0.000	3-1	14
01.4081.0.005	3-17	16	01.5028.0.000	3-26	29	01.6075.0.000	3-1	06
01.4081.0.006	3-17	16	01.5034.0.000	3-5	08	01.6280.0.000	3-25	43
01.4081.0.008	3-17	16	01.5039.0.000	3-23	16	01.6334.0.000	3-20	17
01.4081.0.009	3-17	16	01.5042.0.000	3-23	04	01.6345.0.000	3-8	08
01.4081.0.010	3-17	16	01.5043.0.000	3-25	12	01.6368.0.000	3-28	25
01.4081.0.011	3-17	16	01.5044.0.000	3-25	21	01.6428.0.000	3-12	03
01.4081.0.012	3-17	16	01.5045.1.000	3-58	06			
01.4117.0.000	3-12	09	01.5054.0.000	3-22	34	01.6528.0.000		
01.4117.0.000	3-15	33	01.5059.0.000	3-25	32	01.6528.0.000	3-28	28
01.4154.0.000	3-22	15	01.5061.0.000	3-30	15	01.6560.0.000	3-30	09
01.4154.0.000	3-24	16	01.5061.0.000	3-33	17	01.6569.0.002	3-33	29
01.4154.0.000	3-29	14	01.5062.0.000	3-5	23	01.6831.0.000	3-23	15
01.4203.0.000	3-25	47	01.5064.0.000	3-5	21	01.6831.0.000	3-33	26
			01.5065.0.000	3-5	22	01.6831.0.001	3-33	23
01.4406.0.000						01.6831.0.002	3-21	15
01.4406.0.000	3-35	34	01.5134.0.000			01.6837.0.000	3-30	12
01.4407.0.000	3-28	21	01.5134.0.000	3-28	12	01.6839.0.001	3-1	10
01.4412.0.000	3-33	02	01.5163.0.000	3-20	11	01.6939.0.001	3-22	02
01.4412.0.000	3-35	05	01.5167.0.000	3-15	22	01.6970.0.000	3-9	18
01.4426.0.001	3-3	30	01.5172.0.000	3-13	16	01.6983.0.001	3-30	07
01.4472.0.000	3-22	24	01.5429.0.000	3-15	30	01.7015.0.000	3-15	11
01.4482.0.000	3-10	06	01.5433.0.000	3-28	27	01.7022.0.000	3-26	06
01.4503.0.000	3-11	26	01.5447.0.000	3-12	19	01.7023.0.000	3-13	21
01.4503.0.000	3-12	10	01.5448.0.000	3-12	01	01.7038.0.000	3-11	18
01.4522.0.000	3-11	09	01.5457.0.000	3-3	44	01.7041.0.000	3-21	12
01.4522.0.000	3-12	08	01.5602.0.000	3-33	27	01.7043.0.000	3-13	22
01.4528.0.005	3-51	16	01.5603.0.000	3-20	02	01.7058.0.000	3-54	24
01.4572.0.000	3-33	03	01.5619.0.000	3-27	17	01.7435.1.000	3-28	11
01.4578.0.000	3-39	19	01.5620.0.000	3-27	11	01.7438.0.000	3-28	15
01.4579.0.000	3-35	39	01.5664.0.000	3-25	42	01.7630.0.001	3-21	26
01.4579.0.000	3-39	20	01.5670.0.000	3-3	46	01.7632.1.000	3-23	07
01.4581.0.000	3-33	07	01.5671.0.000	3-3	47	01.7653.0.000	3-10	04
01.4672.0.301	3-35	06	01.5684.0.000	3-39	26	01.7668.0.000	3-9	05
01.4701.0.000	3-22	29				01.7722.0.000	3-10	05
01.4701.0.000	3-33	09				01.7800.0.000	3-9	16

INDEX

PART NUMBER	PAGE	DET	PART NUMBER	PAGE	DET	PART NUMBER	PAGE	DET
01.8002.1.000			04.9000.0.122			06.5107.0.001		
01.8002.1.000	3-11	03	04.9000.0.122	3-43	14	06.5107.0.001	3-35	36
01.9000.0.910	3-41	28	04.9000.0.123	3-41	14	06.5107.0.002	3-35	35
01.9000.0.910	3-43	28	04.9000.0.812	3-41	29	06.5108.0.000	3-35	57
			04.9031.0.000	3-37	37	06.5109.0.000	3-35	56
03.0007.0.000			04.9032.0.000	3-37	19	06.5111.0.000	3-35	58
03.0007.0.000	3-44	01	05.0090.0.000	3-44	12	06.5112.0.000	3-35	59
03.0013.0.000	3-44	09	05.0531.0.001	3-17	32	06.5395.0.000	3-37	54
03.0018.0.000	3-44	05	05.0701.0.000	3-45	07	06.5690.0.000	3-41	25
03.0019.0.000	3-44	07	05.0702.0.000	3-45	06	06.5690.0.000	3-43	25
03.0020.0.000	3-44	10	05.1102.0.000	3-41	18			
03.0022.0.000	3-44	11	05.1102.0.000	3-43	18	07.0059.1.008		
03.0024.0.187	3-44	03	05.1105.0.000	3-46	20	07.0059.1.008	3-46	08
03.0033.0.000	3-45	01	05.1199.0.000	3-41	03	07.0059.1.010	3-46	24
03.0045.0.000	3-45	04	05.1199.0.000	3-43	03	07.0086.0.001	3-33	10
03.0048.1.000	3-44	08	05.1391.0.000	3-39	34	07.0087.0.000	3-33	11
03.0053.0.000	3-45	02	05.1393.0.000	3-39	29	07.0087.0.001	3-33	12
03.0054.0.000	3-44	04	05.1395.0.000	3-39	23	07.0204.0.001	3-47	01
03.0162.0.000	3-44	06	05.4111.0.000	3-39	41	07.0400.0.003	3-22	09
03.0188.0.000	3-45	03	05.4115.0.400	3-37	13	07.0400.0.003	3-46	16
03.0189.0.016	3-45	03				07.0400.0.004	3-47	15
03.0404.0.000	3-45	05	06.0716.0.000			07.0400.0.005	3-46	12
03.0410.0.000	3-44	13	06.0716.0.000	3-37	52	07.0400.0.007	3-46	13
03.5238.0.000	3-5	11	06.0775.0.000	3-35	54	07.0400.0.007	3-47	12
03.5245.0.000	3-22	13	06.0775.0.000	3-51	08	07.0400.0.010	3-47	07
03.5245.0.000	3-24	14	06.5086.0.000	3-35	55	07.0400.0.016	3-46	11
03.5245.0.000	3-29	12	06.5087.0.000	3-41	17	07.0400.0.024	3-46	25
03.6000.8.106	3-35	38	06.5087.0.000	3-43	17	07.0401.0.004	3-27	18
03.6000.8.106	3-52	14	06.5088.0.000	3-37	04	07.0401.0.004	3-46	15
04.0038.0.000	3-44	02	06.5091.0.000	3-41	26	07.0401.0.007	3-22	10
04.0172.0.250	3-49	06	06.5091.0.000	3-43	26	07.0401.0.007	3-46	05
04.0514.0.000	3-46	09	06.5092.0.000	3-41	21	07.0401.0.007	3-47	20
04.1085.0.000	3-41	13	06.5092.0.000	3-43	21	07.0401.0.009	3-26	23
04.1085.0.000	3-43	13	06.5093.0.000	3-37	55	07.0401.0.009	3-46	07
04.1223.0.003	3-57	20	06.5094.0.000	3-37	57	07.0401.0.009	3-47	06
04.1283.0.001	3-33	31	06.5096.0.000	3-37	56	07.0569.0.000	3-41	22
04.1283.0.001	3-44	14	06.5099.0.000	3-35	16	07.0569.0.000	3-43	22
04.1554.4.000	3-41	01	06.5100.0.000	3-35	02	07.6004.0.800	3-37	01
04.1555.4.000	3-43	01	06.5100.0.000	3-51	06	07.6004.0.800	3-41	05
04.1712.0.000	3-44	15	06.5101.0.000	3-35	19	07.6004.0.800	3-43	05
04.1791.0.000	3-33	18	06.5102.0.000	3-35	18	07.6006.0.001	3-35	32
04.2040.0.003	3-46	04	06.5102.0.000	3-51	02	07.6320.0.001	3-35	60
04.2040.0.005	3-46	06	06.5103.0.000	3-37	45	07.6481.0.014	3-33	32
04.2040.0.005	3-47	05	06.5103.0.000	3-41	27	07.6600.0.003	3-57	22
04.3002.0.000	3-35	09	06.5103.0.000	3-43	27	07.9012.0.000	3-37	06
04.3002.0.000	3-6	01	06.5104.0.050	3-35	41	07.9013.0.000	3-37	10

INDEX

PART NUMBER	PAGE	DET	PART NUMBER	PAGE	DET	PART NUMBER	PAGE	DET
10.1003.0.000			10.1078.1.000			10.2036.0.000		
10.1003.0.000	3-20	03	10.1078.1.000	3-20	05	10.2036.0.000	3-1	07
10.1004.0.000	3-20	04	10.1093.2.000	3-11	04	10.2039.0.000	3-1	13
10.1008.0.000	3-20	14	10.1109.3.000	3-11	16	10.2041.0.000	3-1	03
10.1009.0.000	3-20	13	10.1122.0.010	3-15	18	10.2042.0.000	3-1	01
10.1014.1.000	3-15	01	10.1122.0.011	3-15	18	10.2042.0.000	3-3	27
10.1016.2.000	3-15	06	10.1122.0.012	3-15	18	10.2051.2.000	3-3	25
10.1021.1.000	3-17	18	10.1122.0.013	3-15	18	10.2051.2.000	3-3	28
10.1022.0.000	3-17	20	10.1122.0.014	3-15	18	10.2052.0.000	3-3	26
10.1023.3.000	3-17	17	10.1122.0.015	3-15	18	10.2054.0.000	3-3	17
10.1024.0.001	3-17	05	10.1122.0.016	3-15	18	10.2201.2.000	3-23	10
10.1024.0.002	3-17	05	10.1122.0.017	3-21	16	10.2203.0.000	3-5	14
10.1024.0.003	3-17	05	10.1122.0.980	3-15	18	10.2204.0.600	3-5	17
10.1027.1.050	3-15	09	10.1122.0.998	3-15	18	10.2204.0.600	3-56	17
10.1029.1.000	3-15	23	10.1122.0.999	3-15	18	10.2205.0.000	3-5	16
10.1030.0.017	3-15	19	10.1147.0.000	3-17	25	10.2206.2.000	3-13	24
10.1031.0.000	3-17	03	10.1152.0.000	3-15	16	10.2208.1.000	3-5	12
10.1032.0.000	3-15	03	10.1153.0.000	3-17	10	10.2210.0.001	3-5	06
10.1032.3.300	3-31	01	10.1158.1.050	3-20	07	10.2217.0.000	3-5	20
10.1033.1.000	3-17	14	10.1159.0.000	3-20	08	10.2218.0.000	3-5	18
10.1034.0.000	3-17	12	10.1160.0.000	3-20	16	10.2255.2.150	3-22	01
10.1036.0.000	3-26	14	10.1163.0.000	3-30	01	10.2255.3.200	3-22	01
10.1037.0.000	3-17	09	10.1167.1.000	3-12	02	10.2256.0.000	3-22	05
10.1038.2.000	3-17	08	10.1168.0.000	3-11	11	10.2257.0.000	3-13	19
10.1039.0.000	3-17	07	10.1168.0.000	3-12	13	10.2258.0.090	3-13	18
10.1040.0.000	3-17	06	10.1169.0.000	3-12	17	10.2259.0.000	3-13	15
10.1044.0.000	3-17	28	10.1208.0.000			10.2260.0.001	3-13	20
10.1045.2.000	3-15	10	10.1208.0.000	3-58	05	10.3002.0.000		
10.1053.0.000	3-21	28	10.1209.0.000	3-58	08	10.3002.0.000	3-24	02
10.1054.0.000	3-21	23	10.1210.1.000	3-58	04	10.3007.0.000	3-21	06
10.1055.0.000	3-21	20	10.1211.0.000	3-58	10	10.3008.0.000	3-21	09
10.1060.2.000			10.1213.0.000	3-58	11	10.3009.0.000	3-29	04
10.1060.2.000	3-24	07	10.1214.0.000	3-58	01	10.3010.0.000	3-29	02
10.1061.1.000	3-24	05	10.2001.0.001	3-3	34	10.3011.0.000	3-29	09
10.1062.0.000	3-21	21	10.2001.0.002	3-3	35	10.3012.0.000	3-22	22
10.1066.2.000	3-21	18	10.2001.0.003	3-3	34	10.3012.0.000	3-24	20
10.1068.1.050	3-30	03	10.2007.0.350	3-12	12	10.3012.0.000	3-29	10
10.1071.1.023	3-30	18	10.2007.0.350	3-13	25	10.3013.0.000	3-29	18
10.1071.2.000	3-30	18	10.2014.0.000	3-35	10	10.3016.0.000	3-22	17
10.1072.0.000	3-30	08	10.2014.0.000	3-6	02	10.3016.0.000	3-24	17
10.1073.1.000	3-30	20	10.2029.0.000	3-3	29	10.3016.0.000	3-29	15
10.1074.0.000	3-30	16	10.2031.0.000	3-3	33	10.3018.0.000	3-22	11
10.1074.0.250	3-30	16	10.2032.0.000	3-3	31	10.3018.0.350	3-13	05
10.1075.1.000	3-29	05	10.2033.0.000	3-1	09	10.3018.0.350	3-24	12
10.1076.0.000	3-17	04	10.2034.0.000	3-1	12	10.3018.0.350	3-29	13
10.1077.0.000	3-20	06	10.2035.0.000	3-5	09			

INDEX

PART NUMBER	PAGE	DET	PART NUMBER	PAGE	DET	PART NUMBER	PAGE	DET
10.3019.0.300			10.3607.1.000			13.0508.1.000		
10.3019.0.300	3-13	03	10.3607.1.000	3-19	01	13.0508.1.000	3-35	07
10.3019.1.006	3-13	03	10.4003.0.000	3-27	15	13.1036.0.000	3-17	24
10.3020.0.000	3-13	06	10.4006.0.000	3-27	06	13.1049.0.000	3-15	14
10.3020.0.006	3-13	06	10.4007.0.000	3-27	03	13.1050.0.000	3-15	15
10.3026.0.000	3-29	11	10.4010.2.000	3-25	07	13.1052.0.001	3-21	27
10.3027.0.000	3-22	21	10.4010.2.000	3-27	13	13.1091.1.000	3-24	11
10.3027.0.000	3-24	19	10.4012.0.001	3-26	01	13.1240.0.000	3-51	03
10.3028.0.000	3-8	02	10.4012.0.004	3-26	01	13.1240.0.001	3-35	31
10.3033.0.017	3-13	23	10.4016.0.000	3-26	21	13.2200.1.000	3-23	09
10.3034.0.258	3-13	01	10.4017.0.000	3-26	05	13.3079.0.000	3-11	15
10.3034.0.300	3-13	01	10.4018.0.000	3-26	08	13.3079.0.000	3-9	15
10.3035.1.000	3-8	07	10.4019.0.000	3-26	33	13.3083.0.000	3-33	01
10.3049.0.000	3-9	01	10.4020.0.000	3-26	11	13.3101.2.001	3-10	01
10.3050.0.000	3-9	03	10.4021.0.000	3-26	17	13.3101.2.002	3-10	02
10.3051.0.000	3-9	04	10.4024.0.000	3-21	02	13.3102.0.000	3-33	21
10.3058.1.300	3-30	22	10.4025.0.000	3-29	06	13.3103.0.000	3-33	25
10.3062.1.000	3-30	06	10.4026.0.000	3-26	16	13.3103.0.002	3-33	06
10.3066.0.008	3-8	05	10.4029.0.000	3-26	26	13.3104.0.000	3-33	28
10.3066.0.011	3-8	03	10.4030.0.000	3-20	01	13.3105.0.000	3-33	05
10.3067.2.253	3-30	26	10.4030.0.000	3-26	30	13.3106.0.001	3-33	22
10.3070.1.250	3-30	22	10.4030.0.300	3-25	33	13.3107.1.000	3-33	13
10.3080.0.000	3-9	11	10.4031.0.000	3-25	30	13.3109.0.002	3-19	09
10.3081.0.000	3-11	13	10.4031.0.000	3-26	28	13.3109.0.003	3-19	08
10.3082.0.000	3-9	09	10.4032.0.000	3-25	29	13.3117.0.000	3-10	07
10.3085.0.050	3-28	35	10.4032.0.000	3-26	27	13.3118.3.000	3-23	18
10.3086.0.000	3-28	32	10.4035.0.000	3-26	03	13.3121.0.000	3-23	13
10.3090.0.000	3-28	13	10.4037.0.000	3-26	13	13.3127.0.000	3-19	04
			10.4039.0.000	3-27	08	13.4205.0.000	3-23	01
						13.4207.1.000	3-23	20
10.3201.0.001			10.4206.0.000			13.5024.0.000	3-33	14
10.3201.0.001	3-8	14	10.4206.0.000	3-23	05	13.5025.1.000	3-33	15
10.3202.0.050	3-28	17	10.4208.0.000	3-25	02	13.5031.0.000	3-39	35
10.3203.0.000	3-28	16	10.4209.0.000	3-25	03			
10.3205.0.000	3-28	06	10.4210.0.000	3-25	01	14.0523.1.400		
10.3206.0.000	3-28	09	10.4211.0.000	3-25	13	14.0523.1.400	3-39	37
10.3250.1.000	3-22	32	10.4212.0.000	3-25	06	14.0524.1.400	3-39	11
10.3252.1.000	3-22	03	10.4215.0.000	3-25	11	14.0525.0.400	3-39	04
10.3253.0.000	3-22	25	10.4217.0.000	3-25	20	14.0526.0.050	3-39	22
10.3254.0.000	3-22	07	10.4218.0.000	3-25	34	14.0527.0.400	3-39	33
10.3258.0.000	3-22	18	10.4219.0.000	3-25	35	14.0531.0.000	3-39	36
10.3259.1.001	3-22	23	10.4220.0.000	3-25	19	14.0541.1.400	3-39	28
10.3259.1.002	3-22	23	10.4221.0.000	3-25	31	14.0625.0.400	3-35	11
10.3262.0.250	3-22	26	10.4550.0.000	3-19	03	14.0626.0.400	3-39	06
10.3300.0.006	3-13	04				14.0627.0.400	3-39	09
10.3301.1.006	3-13	11				14.0628.0.400	3-39	30
10.3302.0.000	3-13	12				14.0629.0.400	3-39	12
10.3303.0.000	3-13	07						

INDEX

PART NUMBER	PAGE	DET	PART NUMBER	PAGE	DET	PART NUMBER	PAGE	DET
14.0630.0.400			14.1205.1.000			14.2401.0.000		
14.0630.0.400	3-39	24	14.1205.1.000	3-58	03	14.2401.0.000	3-35	50
14.0632.0.400	3-39	38	14.1206.0.000	3-58	02	14.2401.0.000	3-51	15
14.0633.0.400	3-35	13	14.1207.0.000	3-58	07	14.2401.0.002	3-35	53
			14.1236.0.000	3-21	13	14.2402.0.000	3-35	25
14.1001.1.400			14.1239.0.400	3-35	30	14.2919.0.000	3-50	09
14.1001.1.400	3-15	34	14.1239.0.400	3-51	04	14.2961.0.400	3-50	07
14.1001.1.400	3-20	18	14.1240.0.050	3-9	21	14.2966.0.401	3-50	08
14.1003.0.000	3-46	02	14.1250.0.000	3-17	30	14.2967.0.000	3-50	13
14.1005.0.000	3-46	23	14.1252.1.000	3-15	26	14.2968.0.000	3-50	04
14.1005.0.000	3-47	18	14.1258.1.000	3-15	25	14.2969.0.000	3-50	14
14.1006.0.000	3-47	14	14.1264.0.400	3-35	01	14.2971.0.000	3-3	36
14.1007.0.000	3-47	16	14.1320.0.000	3-47	08	14.2972.0.000	3-3	37
14.1007.0.001	3-47	19	14.1407.0.000	3-39	01	14.2972.0.001	3-3	48
14.1008.0.000	3-46	03	14.1416.0.003	3-41	04	14.2976.0.000	3-48	03
14.1008.0.000	3-47	03	14.1416.0.003	3-43	04	14.2976.0.000	3-57	03
14.1009.0.000	3-46	10	14.1703.0.000	3-25	37	14.2981.0.000	3-50	03
14.1010.0.000	3-46	18				14.2990.0.000	3-49	08
14.1013.0.000	3-47	17	14.2003.0.000			14.2991.0.400	3-35	03
14.1015.0.000	3-46	14	14.2003.0.000	3-3	08	14.2995.0.000	3-35	48
14.1015.0.000	3-47	13	14.2004.0.000	3-3	05	14.2995.0.000	3-51	07
14.1016.1.050	3-15	05	14.2007.0.000	3-3	07	14.2996.0.000	3-35	49
14.1017.0.000	3-15	04	14.2008.0.000	3-3	02	14.2998.0.000	3-35	29
14.1020.0.050	3-46	01	14.2040.0.050	3-1	05	14.2998.0.000	3-51	05
14.1023.0.000	3-46	21	14.2043.0.019	3-3	12			
14.1025.1.000	3-17	23	14.2043.1.301	3-5	05	14.3001.0.400		
14.1026.0.000	3-21	19	14.2043.1.301	3-56	12	14.3001.0.400	3-23	03
14.1028.0.000	3-15	12	14.2047.0.019	3-3	16	14.3001.0.400	3-8	01
14.1029.0.000	3-46	22	14.2047.0.019	3-5	02	14.3002.0.000	3-30	25
			14.2047.0.019	3-56	16	14.3003.0.000	3-24	03
14.1030.0.000			14.2053.0.000	3-3	03	14.3004.0.000	3-24	01
14.1030.0.000	3-47	04	14.2059.0.000	3-3	09	14.3005.0.000	3-21	07
14.1035.0.050	3-17	11	14.2059.0.300	3-5	04	14.3005.0.000	3-24	21
14.1041.0.000	3-17	02	14.2060.0.000	3-3	21	14.3006.0.201	3-21	11
14.1042.0.000	3-15	21	14.2060.0.000	3-5	03	14.3017.0.000	3-22	12
14.1043.0.000	3-17	27	14.2061.0.100	3-11	27	14.3017.0.000	3-24	13
14.1046.0.000	3-15	07	14.2061.0.100	3-12	07	14.3017.0.000	3-29	17
14.1047.0.050	3-15	13	14.2061.0.300	3-11	27	14.3033.0.000	3-54	24
14.1058.0.000	3-24	08	14.2061.0.300	3-12	07	14.3047.0.801	3-9	19
14.1059.0.000	3-24	09	14.2070.0.000	3-50	02	14.3074.0.012	3-30	21
14.1064.1.000	3-21	17	14.2202.0.000	3-5	07	14.3087.0.000	3-28	31
14.1067.0.000	3-21	08	14.2212.0.000	3-3	38	14.3088.0.000	3-28	29
14.1070.0.000	3-17	15	14.2213.0.000	3-3	41	14.3100.0.000	3-9	08
14.1108.0.050	3-11	07	14.2214.0.000	3-3	42	14.3101.0.000	3-9	13
14.1197.0.000	3-25	38	14.2305.0.000	3-37	23	14.3118.0.000	3-54	18
14.1198.0.000	3-25	44	14.2306.0.000	3-37	24	14.3130.0.000	3-51	10
14.1204.1.000	3-58	12				14.3130.0.002	3-51	13

INDEX

PART NUMBER	PAGE	DET	PART NUMBER	PAGE	DET	PART NUMBER	PAGE	DET
14.3251.1.000			14.9008.0.050					
14.3251.1.000	3-22	33	14.9008.0.050	3-27	19			
14.4001.0.150	3-26	32	16.2001.0.400	3-50	12			
14.4001.0.301	3-25	14	16.2001.0.410	3-3	45			
14.4002.0.000	3-27	16	16.2001.0.420	3-3	45			
14.4004.0.000	3-27	04	17.0014.1.201	3-35	20			
14.4005.0.030	3-27	02	17.0019.0.441	3-35	21			
14.4008.1.000	3-27	05	17.0094.6.009	3-19	07			
14.4009.1.000	3-27	01	17.0094.6.009	3-41	06			
14.4011.0.200	3-26	02	17.0094.6.009	3-43	06			
14.4012.1.015	3-25	10	17.0095.1.273	3-35	22			
14.4013.0.000	3-26	10	20.6042.0.000	3-37	53			
14.4015.0.000	3-26	20						
14.4022.0.000	3-26	19						
14.4023.0.000	3-17	13						
14.4023.0.000	3-21	04						
14.4023.0.000	3-29	07						
14.4200.0.400								
14.4200.0.400	3-25	15						
14.4201.0.000	3-25	27						
14.4201.0.000	3-27	14						
14.4202.0.000	3-25	36						
14.4202.0.850	3-25	05						
14.4220.0.016	3-48	04						
14.4221.0.000	3-50	06						
14.4223.0.000	3-1	16						
14.4223.0.000	3-48	06						
14.4224.0.000	3-1	15						
14.4224.0.000	3-48	07						
14.4224.0.000	3-57	11						
14.4225.0.000	3-48	08						
14.5014.0.000	3-54	25						
14.5019.0.000	3-28	19						
14.5601.0.000	3-55	05						
14.5601.0.000	3-57	17						
14.5602.0.000	3-54	09						
14.5602.0.000	3-57	15						
14.5603.0.000	3-57	12						
14.5605.0.050	3-57	14						
14.5606.0.000	3-57	07						
14.5607.0.000	3-57	10						
14.5608.0.000	3-54	13						
14.5608.0.000	3-57	16						
14.5609.0.000	3-57	13						
14.5610.0.000	3-57	18						
14.5611.0.000	3-57	06						