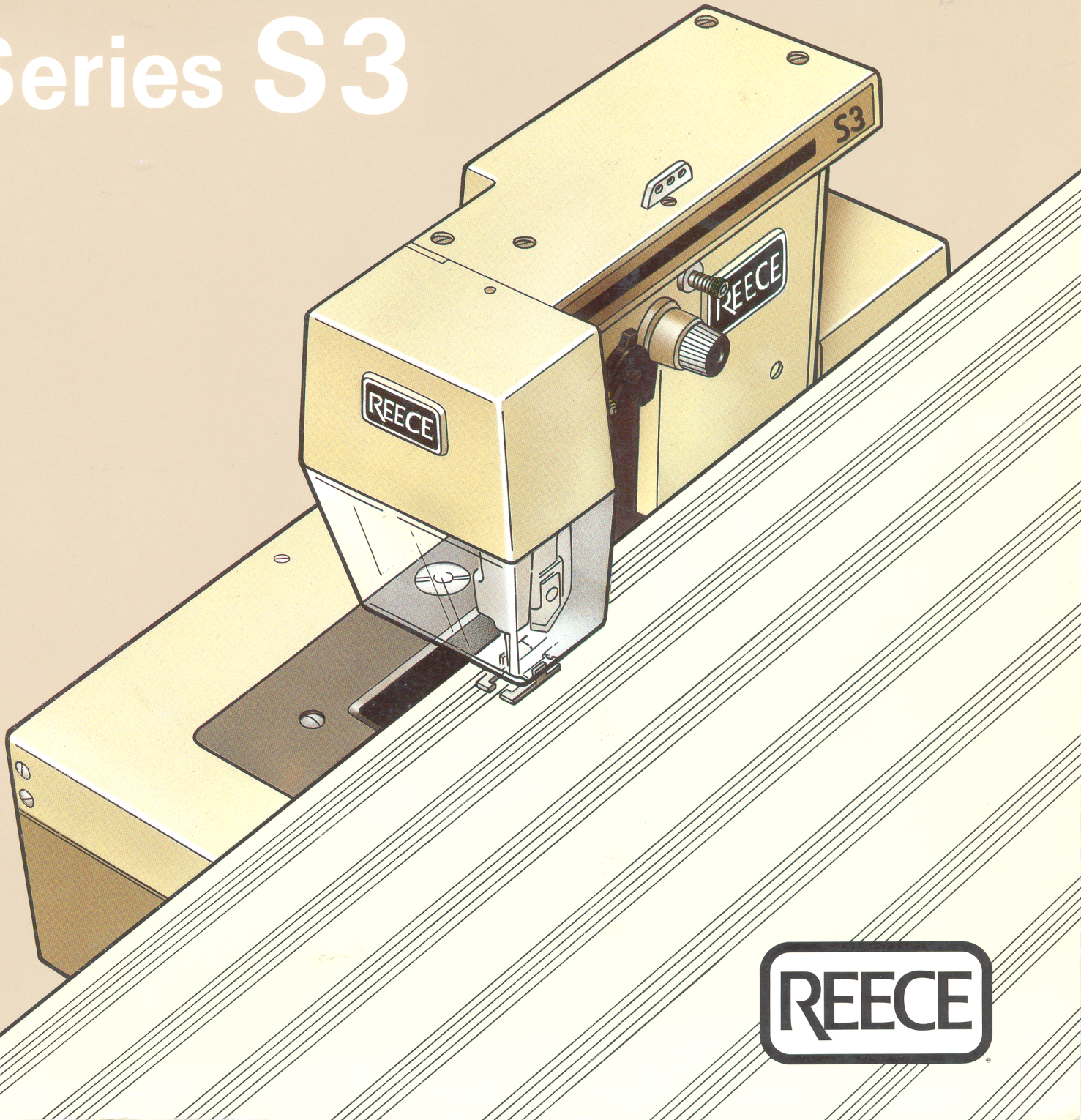


Illustrated Parts List

Buttonhole Machines

Series S3



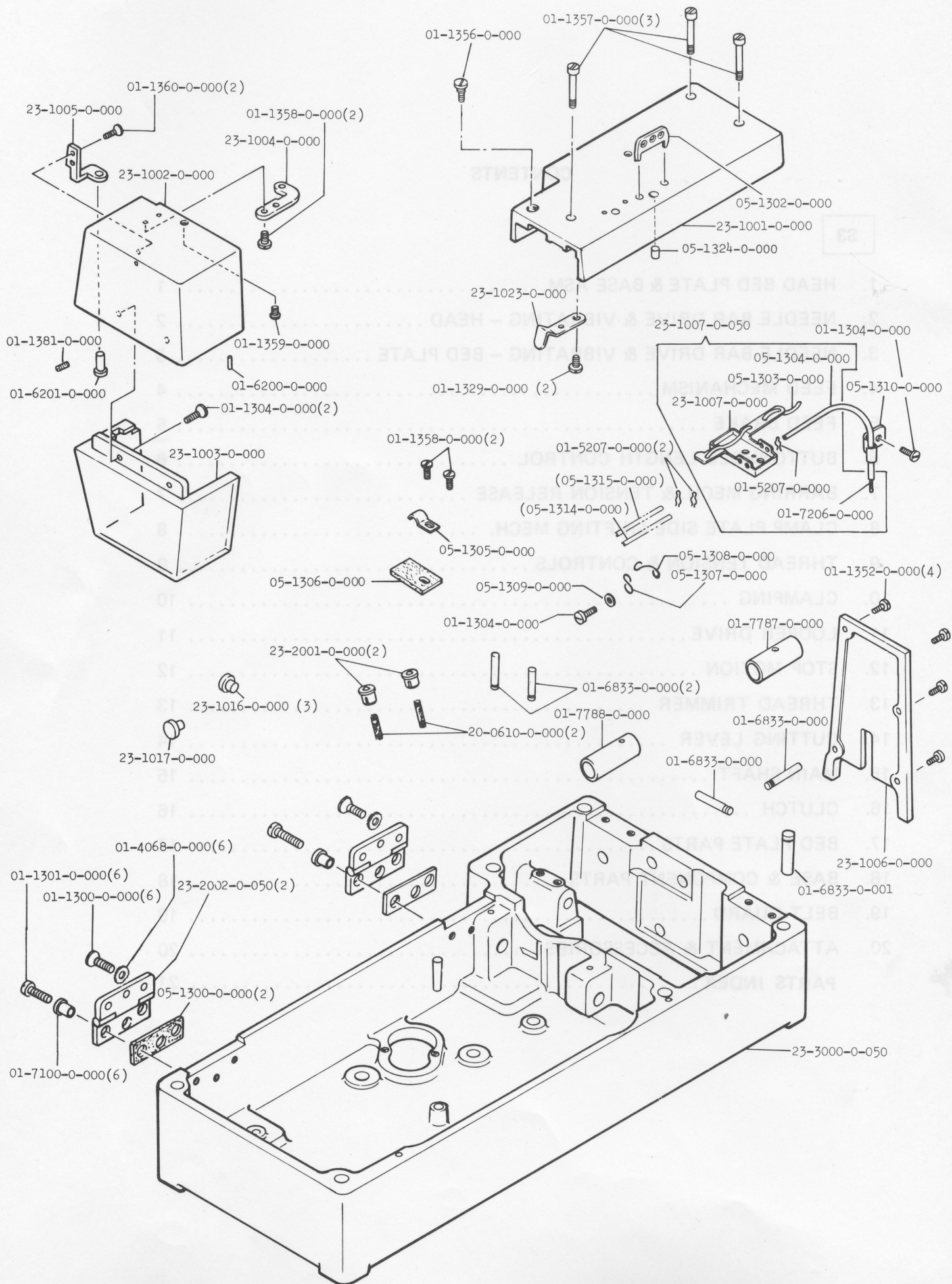
REECE

CONTENTS

S3

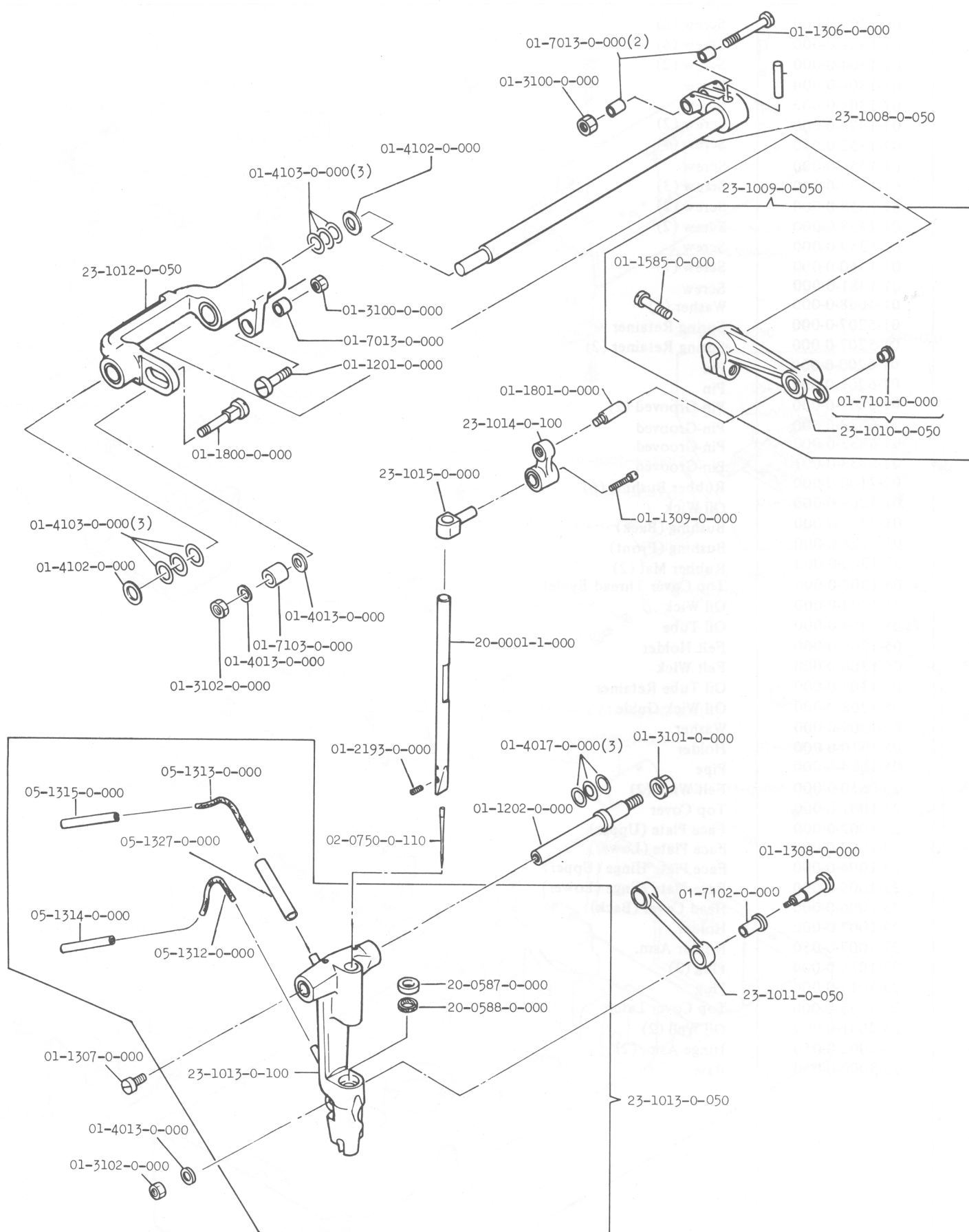
| | | |
|-----|-----------------------------------------------|----|
| 1. | HEAD BED PLATE & BASE ASM. | 1 |
| 2. | NEEDLE BAR DRIVE & VIBRATING – HEAD | 2 |
| 3. | NEEDLE BAR DRIVE & VIBRATING – BED PLATE | 3 |
| 4. | FEED MECHANISM | 4 |
| 5. | FEED BRAKE | 5 |
| 6. | BUTTONHOLE LENGTH CONTROL | 6 |
| 7. | BARRING MECH. & TENSION RELEASE | 7 |
| 8. | CLAMP PLATE SIDE SHIFTING MECH. | 8 |
| 9. | THREAD TENSION & CONTROLS | 9 |
| 10. | CLAMPING | 10 |
| 11. | LOOPER DRIVE | 11 |
| 12. | STOP MOTION | 12 |
| 13. | THREAD TRIMMER | 13 |
| 14. | CUTTING LEVER | 14 |
| 15. | MAIN SHAFT | 15 |
| 16. | CLUTCH | 16 |
| 17. | BED PLATE PARTS | 17 |
| 18. | BASE & COMPONENT PARTS | 18 |
| 19. | BELT GUARD | 19 |
| 20. | ATTACHMENT & ACCESSORIES | 20 |
| | PARTS INDEX | 21 |

1. HEAD BED PLATE & BASE ASM



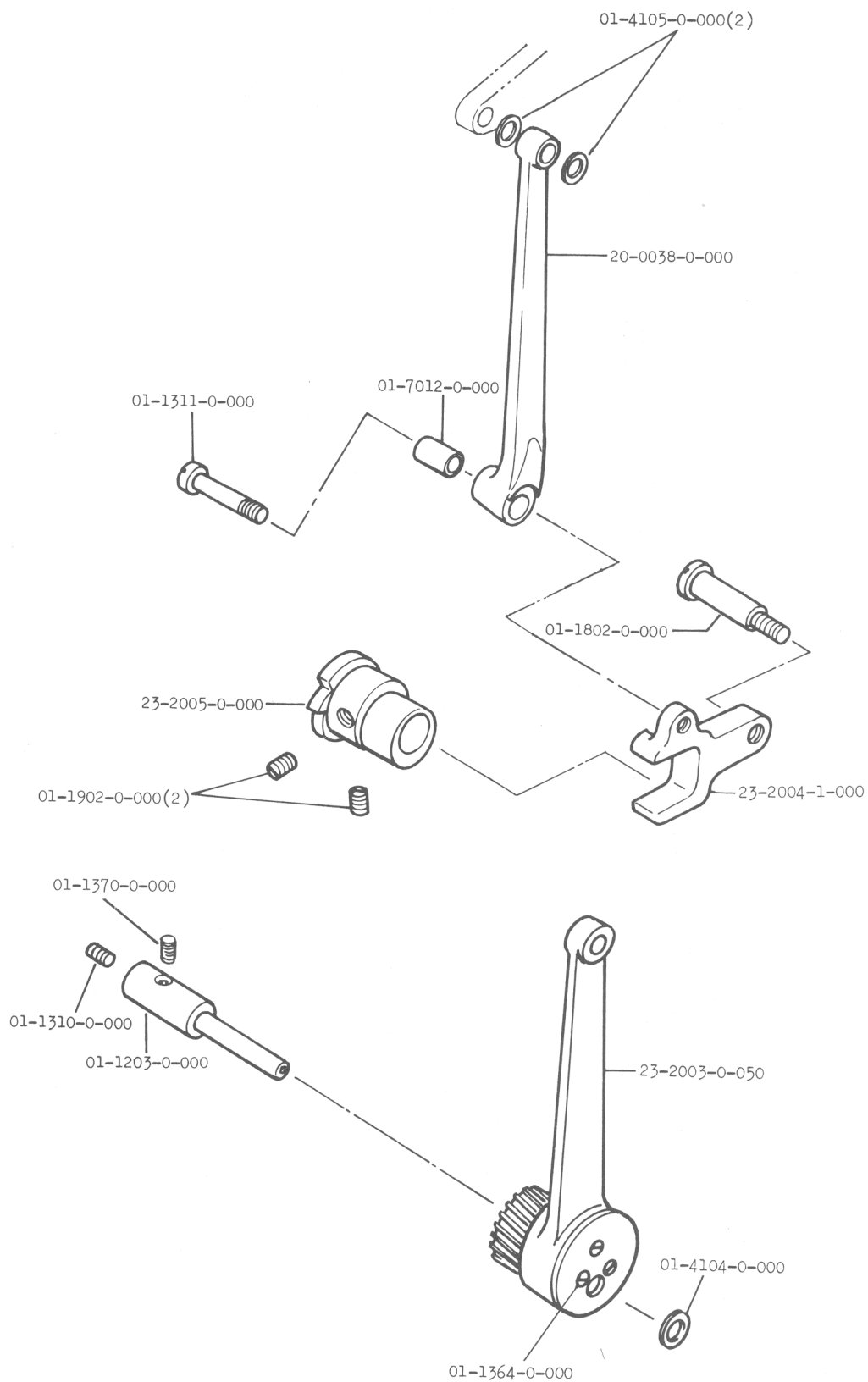
| No. | Description |
|---------------|--------------------------|
| 01-1300-0-000 | Screw (6) |
| 01-1301-0-000 | Screw (6) |
| 01-1304-0-000 | Screw (2) |
| 01-1304-0-000 | Screw |
| 01-1304-0-000 | Screw |
| 01-1329-0-000 | Screw (2) |
| 01-1352-0-000 | Screw (4) |
| 01-1356-0-000 | Screw |
| 01-1357-0-000 | Screw (3) |
| 01-1358-0-000 | Screw (2) |
| 01-1358-0-000 | Screw (2) |
| 01-1359-0-000 | Screw |
| 01-1360-0-000 | Screw (2) |
| 01-1381-0-000 | Screw |
| 01-4068-0-000 | Washer (6) |
| 01-5207-0-000 | Spring Retainer |
| 01-5207-0-000 | Spring Retainer (2) |
| 01-6200-0-000 | Pin |
| 01-6201-0-000 | Pin |
| 01-6833-0-000 | Pin-Grooved (2) |
| 01-6833-0-000 | Pin-Grooved |
| 01-6833-0-000 | Pin-Grooved |
| 01-6833-0-001 | Pin-Grooved |
| 01-7100-0-000 | Rubber Bushing (6) |
| 01-7206-0-000 | Oil Wick |
| 01-7787-0-000 | Bushing (Back) |
| 01-7788-0-000 | Bushing (Front) |
| 05-1300-0-000 | Rubber Mat (2) |
| 05-1302-0-000 | Top Cover Thread Eyelet |
| 05-1303-0-000 | Oil Wick |
| 05-1304-0-000 | Oil Tube |
| 05-1305-0-000 | Felt Holder |
| 05-1306-0-000 | Felt Wick |
| 05-1307-0-000 | Oil Tube Retainer |
| 05-1308-0-000 | Oil Wick Guide |
| 05-1309-0-000 | Washer |
| 05-1310-0-000 | Holder |
| 05-1324-0-000 | Pipe |
| 20-0610-0-000 | Felt Wick (2) |
| 23-1001-0-000 | Top Cover |
| 23-1002-0-000 | Face Plate (Upper) |
| 23-1003-0-000 | Face Plate (Lower) |
| 23-1004-0-000 | Face Plate Hinge (Upper) |
| 23-1005-0-000 | Face Plate Hinge (Lower) |
| 23-1006-0-000 | Head Cover (Back) |
| 23-1007-0-000 | Holder |
| 23-1007-0-050 | Holder Asm. |
| 23-1016-0-000 | Plug (3) |
| 23-1017-0-000 | Plug |
| 23-1023-0-000 | Top Cover Latch |
| 23-2001-0-000 | Oil Well (2) |
| 23-2002-0-050 | Hinge Asm. (2) |
| 23-3000-0-050 | Base |

2. NEEDLE BAR DRIVE & VIBRATING – HEAD



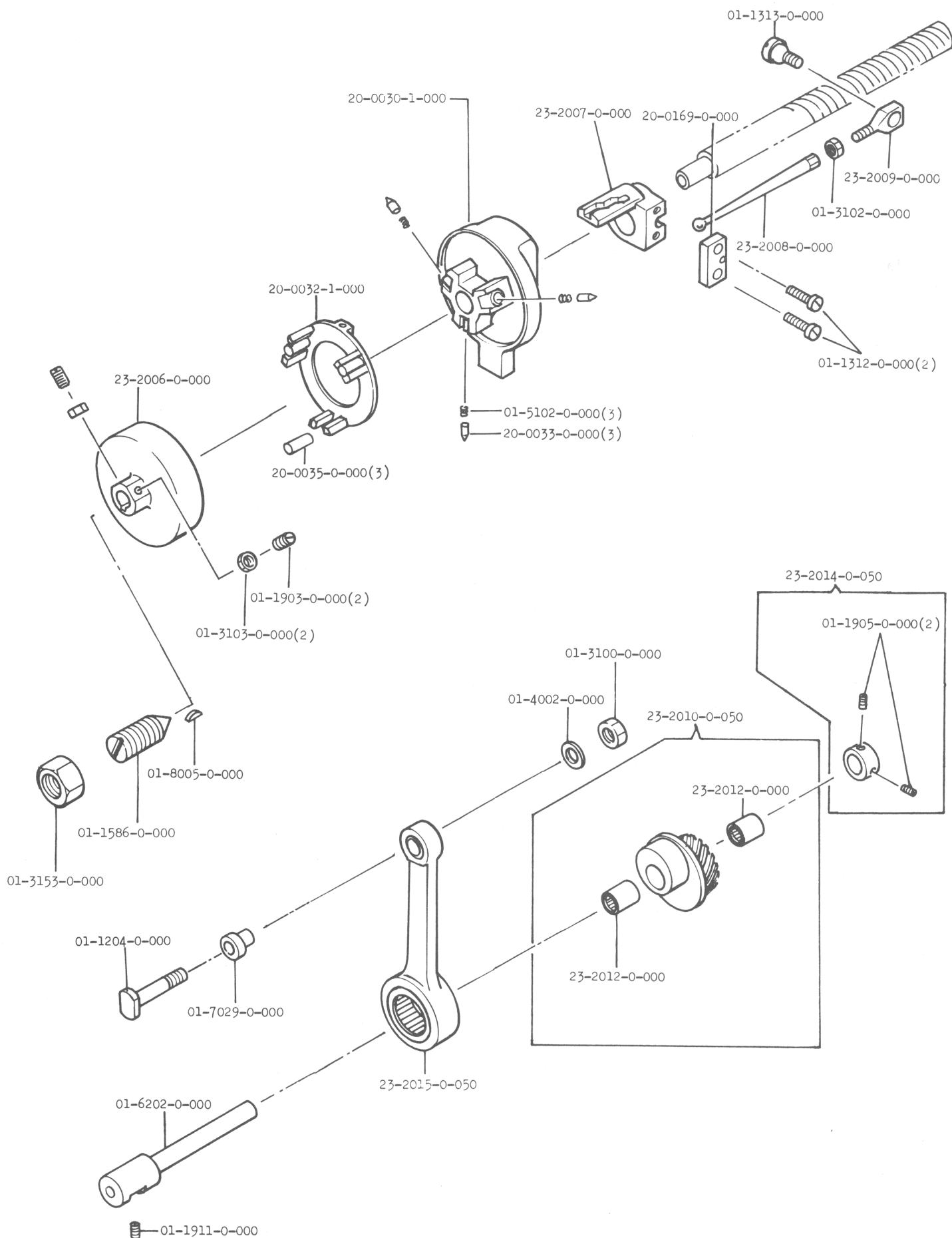
| No. | Description |
|---------------|----------------------------|
| 01-1201-0-000 | Stud |
| 01-1202-0-000 | Stud |
| 01-1306-0-000 | Screw |
| 01-1307-0-000 | Screw |
| 01-1308-0-000 | Eccentric Screw |
| 01-1309-0-000 | Screw |
| 01-1585-0-000 | Screw |
| 01-1800-0-000 | Shoulder Screw |
| 01-1801-0-000 | Shoulder Screw |
| 01-2193-0-000 | Set Screw |
| 01-3100-0-000 | Nut |
| 01-3100-0-000 | Nut |
| 01-3101-0-000 | Nut |
| 01-3102-0-000 | Nut |
| 01-3102-0-000 | Nut |
| 01-4013-0-000 | Washer |
| 01-4013-0-000 | Washer (2) |
| 01-4017-0-000 | Shim (3) |
| 01-4102-0-000 | Washer (2) |
| 01-4103-0-000 | Washer (6) |
| 01-7013-0-000 | Bushing |
| 01-7013-0-000 | Bushing (2) |
| 01-7101-0-000 | Bushing |
| 01-7102-0-000 | Bushing |
| 01-7103-0-000 | Bushing |
| 02-0750-0-110 | Needle |
| 05-1312-0-000 | Oil Wick |
| 05-1313-0-000 | Oil Wick |
| 05-1314-0-000 | Oil Tube (Long) |
| 05-1315-0-000 | Oil Tube (Middle) |
| 05-1327-0-000 | Oil Tube (Short) |
| 20-0001-1-000 | Needle Bar |
| 20-0587-0-000 | Wick Cover |
| 20-0588-0-000 | Wick |
| 23-1008-0-050 | Shaft Asm. |
| 23-1009-0-050 | Drive Lever and Screw Asm. |
| 23-1010-0-050 | Drive Lever Asm. |
| 23-1011-0-050 | Link Asm. |
| 23-1012-0-050 | Rocker Comp. |
| 23-1013-0-050 | Rocker Asm. |
| 23-1013-0-100 | Rocker Comp. |
| 23-1014-0-100 | Link Comp. |
| 23-1015-0-000 | Clamp |

3. NEEDLE BAR DRIVE & VIBRATING – BED PLATE



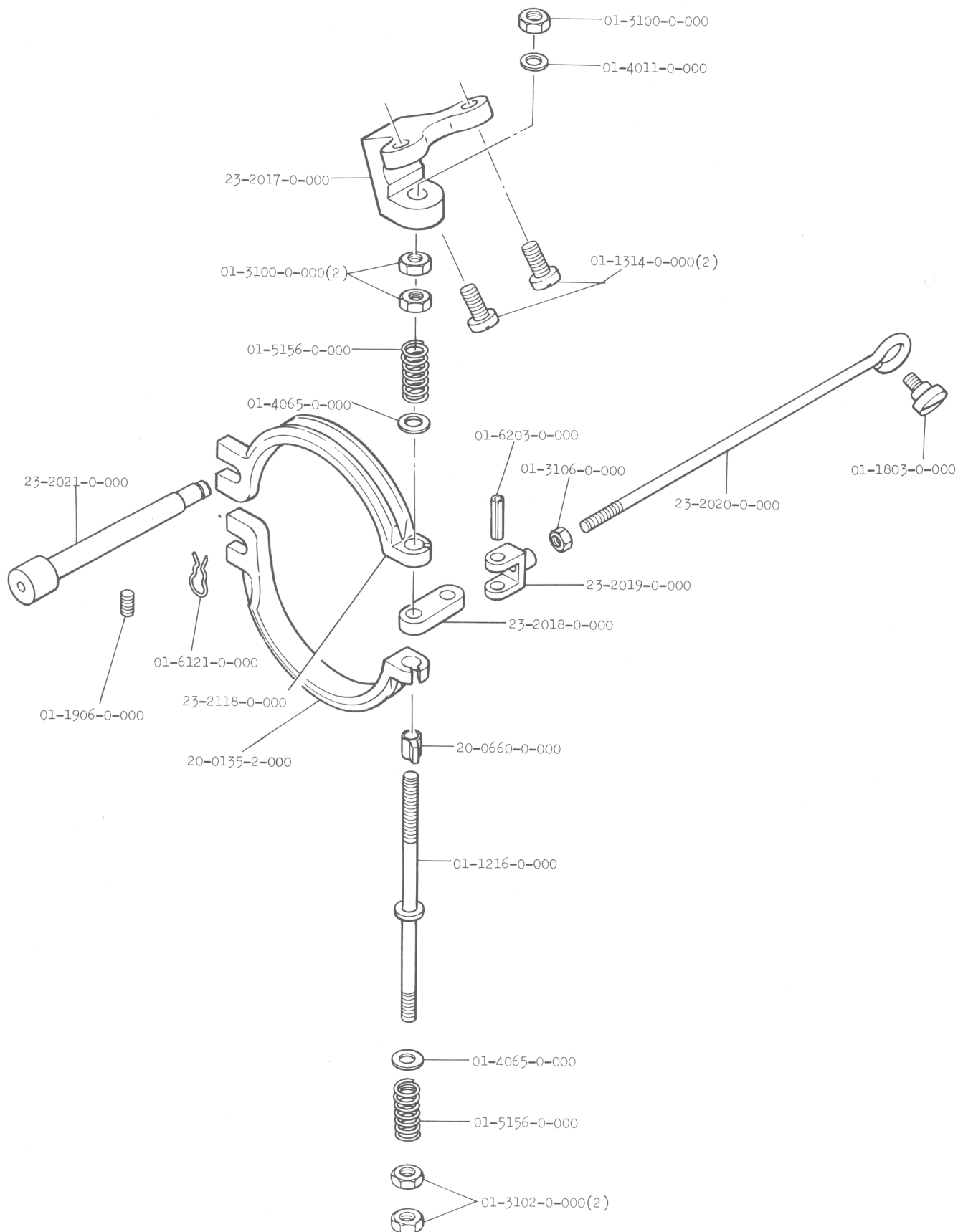
| No. | Description |
|---------------|------------------------|
| 01-1203-0-000 | Stud |
| 01-1310-0-000 | Screw |
| 01-1311-0-000 | Screw |
| 01-1364-0-000 | Screw (3) |
| 01-1370-0-000 | Set Screw |
| 01-1802-0-000 | Shoulder Screw |
| 01-1902-0-000 | Set Screw (2) |
| 01-4104-0-000 | Washer |
| 01-4105-0-000 | Washer (2) |
| 01-7012-0-000 | Bushing |
| 20-0038-0-000 | Link |
| 23-2003-0-050 | Small Gear & Link Asm. |
| 23-2004-1-000 | Bite Cam Follower |
| 23-2005-0-000 | Bite Cam |

4. FEED MECHANISM



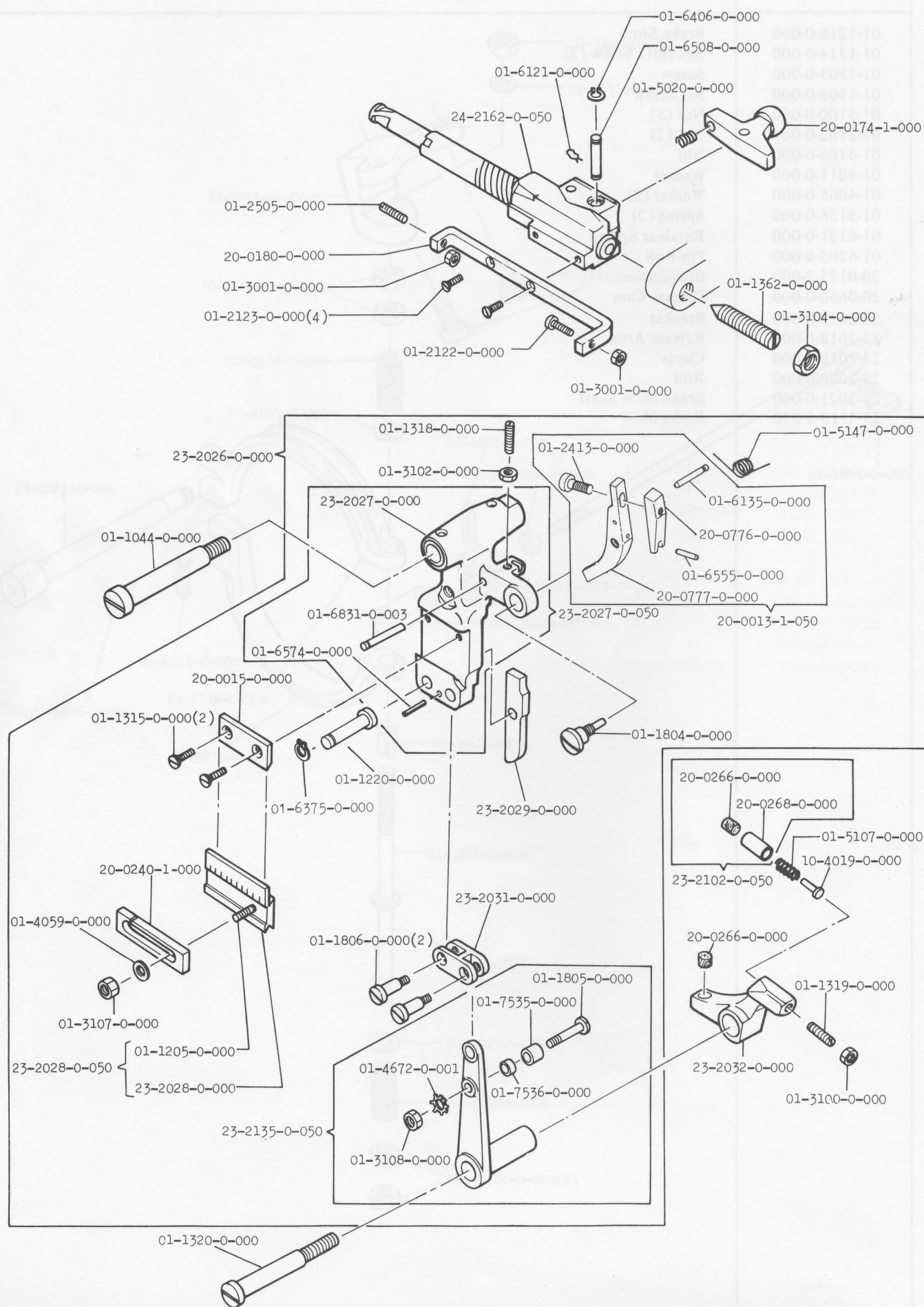
| No. | Description |
|---------------|----------------------------|
| 01-1204-0-000 | Stud Screw |
| 01-1312-0-000 | Screw (2) |
| 01-1313-0-000 | Ball Screw |
| 01-1586-0-000 | Bearing Screw |
| 01-1903-0-000 | Set Screw (2) |
| 01-1905-0-000 | Set Screw (2) |
| 01-1911-0-000 | Set Screw |
| 01-3100-0-000 | Nut |
| 01-3102-0-000 | Nut |
| 01-3103-0-000 | Nut (2) |
| 01-3153-0-000 | Lock Nut |
| 01-4002-0-000 | Washer |
| 01-5102-0-000 | Spring (3) |
| 01-6202-0-000 | Support Pin |
| 01-7029-0-000 | Bushing |
| 01-8005-0-000 | Key |
| 20-0030-0-000 | Feed Cage |
| 20-0030-1-000 | Feed Cage Asm. |
| 20-0032-1-000 | Shifter Ring Asm. |
| 20-0033-0-000 | Race Plunger (3) |
| 20-0035-0-000 | Roller (3) |
| 20-0169-0-000 | Bearing Cap |
| 23-2006-0-000 | Feed Drum |
| 23-2007-0-000 | Shifter. |
| 23-2008-0-000 | Connecting Rod |
| 23-2009-0-000 | Link |
| 23-2010-0-050 | Eccentric and Gear |
| 23-2012-0-000 | Bearing-Feed Eccentric (2) |
| 23-2014-0-050 | Collar Asm. |
| 23-2015-0-050 | Connecting Link Asm. |

5. FEED BRAKE



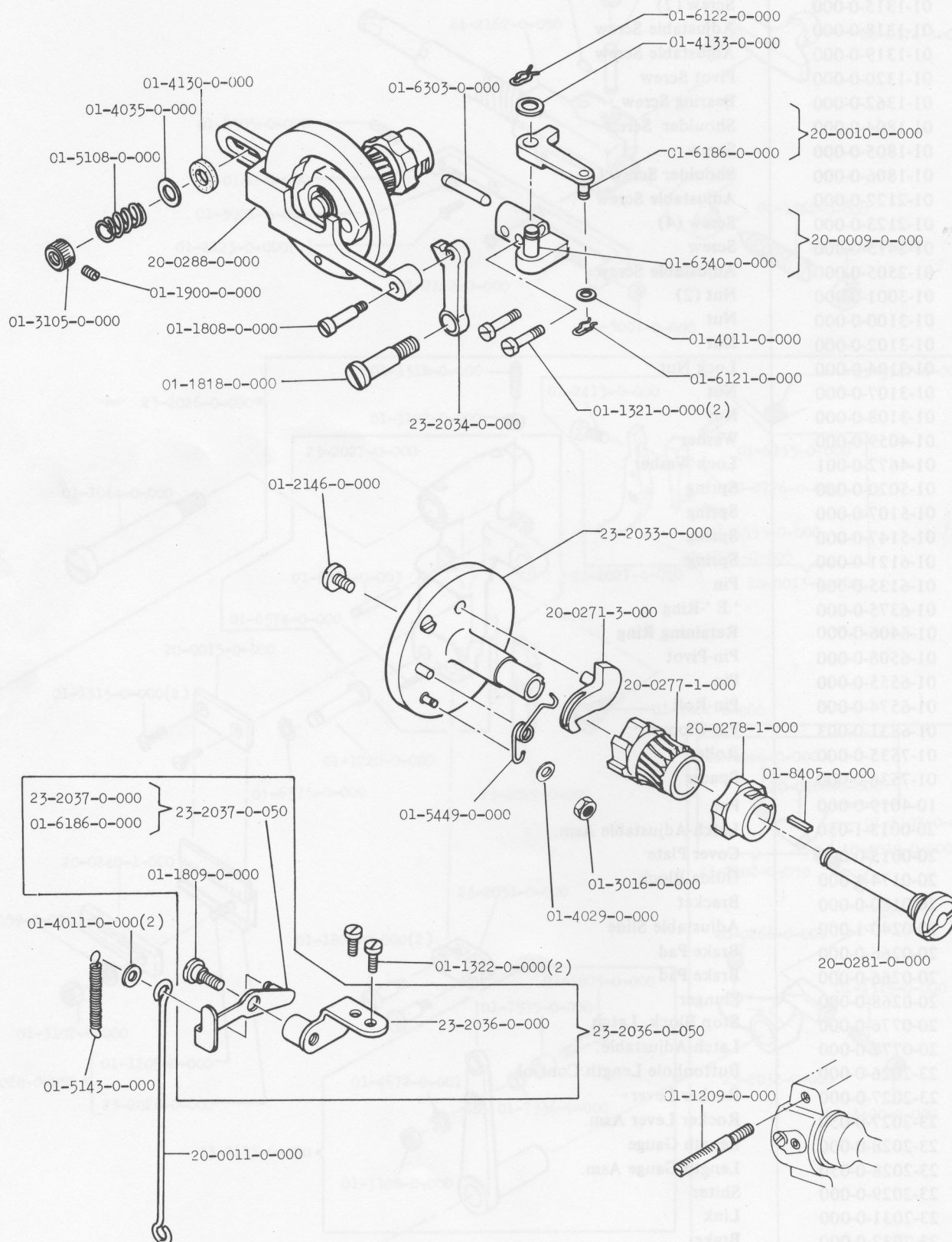
| No. | Description |
|---------------|--------------------|
| 01-1216-0-000 | Brake Stud |
| 01-1314-0-000 | Shoulder Screw (2) |
| 01-1803-0-000 | Screw |
| 01-1906-0-000 | Set Screw |
| 01-3100-0-000 | Nut (3) |
| 01-3102-0-000 | Nut (2) |
| 01-3106-0-000 | Nut |
| 01-4011-0-000 | Washer |
| 01-4065-0-000 | Washer (2) |
| 01-5156-0-000 | Spring (2) |
| 01-6121-0-000 | Retainer Spring |
| 01-6203-0-000 | Pin-Roll |
| 20-0135-2-000 | Brake Shoe |
| 20-0660-0-000 | Release Cam |
| 23-2017-0-000 | Bracket |
| 23-2018-0-000 | Release Asm. |
| 23-2019-0-000 | Clevis |
| 23-2020-0-000 | Rod |
| 23-2021-0-000 | Brake Shoe Shaft |
| 23-2118-0-000 | Brake Shoe |

6. BUTTONHOLE LENGTH CONTROL



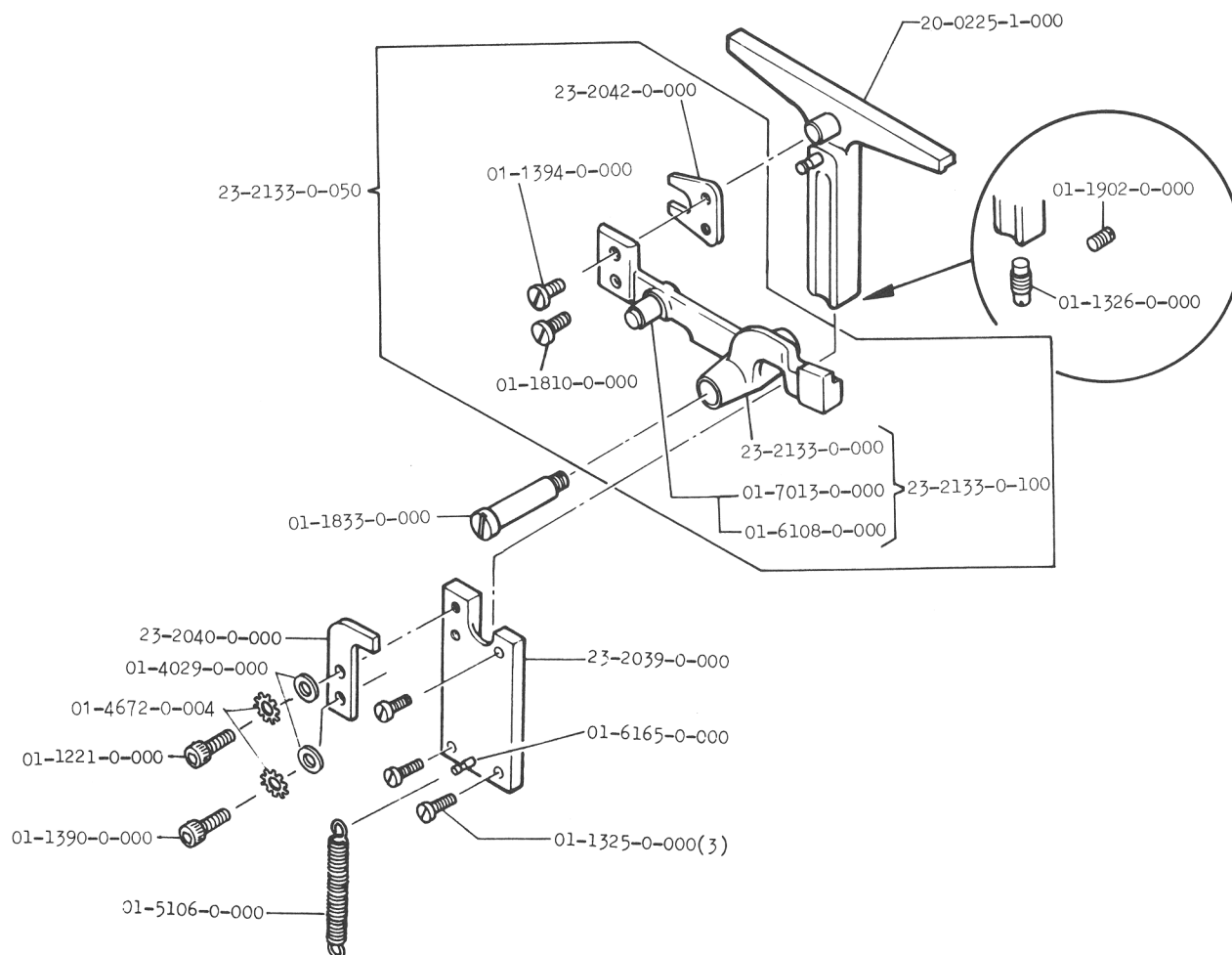
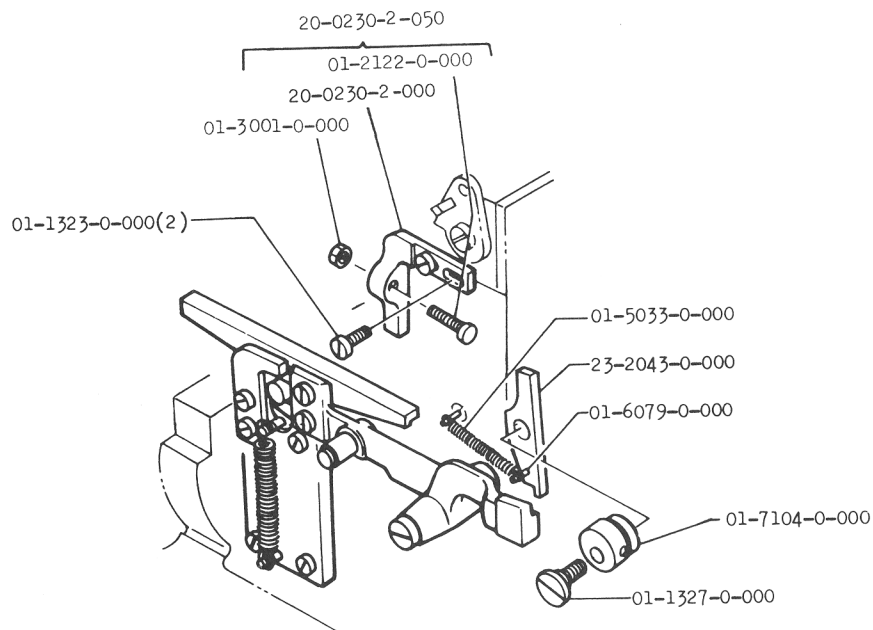
| No. | Description |
|---------------|---------------------------|
| 01-1044-0-000 | Pivot Screw |
| 01-1205-0-000 | Stud Screw |
| 01-1220-0-000 | Stud |
| 01-1315-0-000 | Screw (2) |
| 01-1318-0-000 | Adjustable Screw |
| 01-1319-0-000 | Adjustable Screw |
| 01-1320-0-000 | Pivot Screw |
| 01-1362-0-000 | Bearing Screw |
| 01-1804-0-000 | Shoulder Screw |
| 01-1805-0-000 | Screw |
| 01-1806-0-000 | Shoulder Screw (2) |
| 01-2122-0-000 | Adjustable Screw |
| 01-2123-0-000 | Screw (4) |
| 01-2413-0-000 | Screw |
| 01-2505-0-000 | Adjustable Screw |
| 01-3001-0-000 | Nut (2) |
| 01-3100-0-000 | Nut |
| 01-3102-0-000 | Nut |
| 01-3104-0-000 | Lock Nut |
| 01-3107-0-000 | Nut |
| 01-3108-0-000 | Nut |
| 01-4059-0-000 | Washer |
| 01-4672-0-001 | Lock Washer |
| 01-5020-0-000 | Spring |
| 01-5107-0-000 | Spring |
| 01-5147-0-000 | Spring |
| 01-6121-0-000 | Spring |
| 01-6135-0-000 | Pin |
| 01-6375-0-000 | ' E ' Ring |
| 01-6406-0-000 | Retaining Ring |
| 01-6508-0-000 | Pin-Pivot |
| 01-6555-0-000 | Pin |
| 01-6574-0-000 | Pin-Roll |
| 01-6831-0-003 | Pin-Gloove |
| 01-7535-0-000 | Roller |
| 01-7536-0-000 | Spacer |
| 10-4019-0-000 | Pin |
| 20-0013-1-050 | Latch-Adjustable Asm. |
| 20-0015-0-000 | Cover Plate |
| 20-0174-1-000 | Guide Block |
| 20-0180-0-000 | Bracket |
| 20-0240-1-000 | Adjustable Slide |
| 20-0266-0-000 | Brake Pad |
| 20-0266-0-000 | Brake Pad |
| 20-0268-0-000 | Plunger |
| 20-0776-0-000 | Stop Block, Latch |
| 20-0777-0-000 | Latch-Adjustable. |
| 23-2026-0-000 | Buttonhole Length Control |
| 23-2027-0-000 | Rocker Lever |
| 23-2027-0-050 | Rocker Lever Asm. |
| 23-2028-0-000 | Length Gauge |
| 23-2028-0-050 | Length Gauge Asm. |
| 23-2029-0-000 | Shiter |
| 23-2031-0-000 | Link |
| 23-2032-0-000 | Brake |
| 23-2102-0-050 | Plunger Asm. |
| 23-2135-0-050 | Lever Asm. |
| 24-2162-0-050 | Feed Screw and Feed Block |

7. BARRING MECH. & TENSION RELEASE



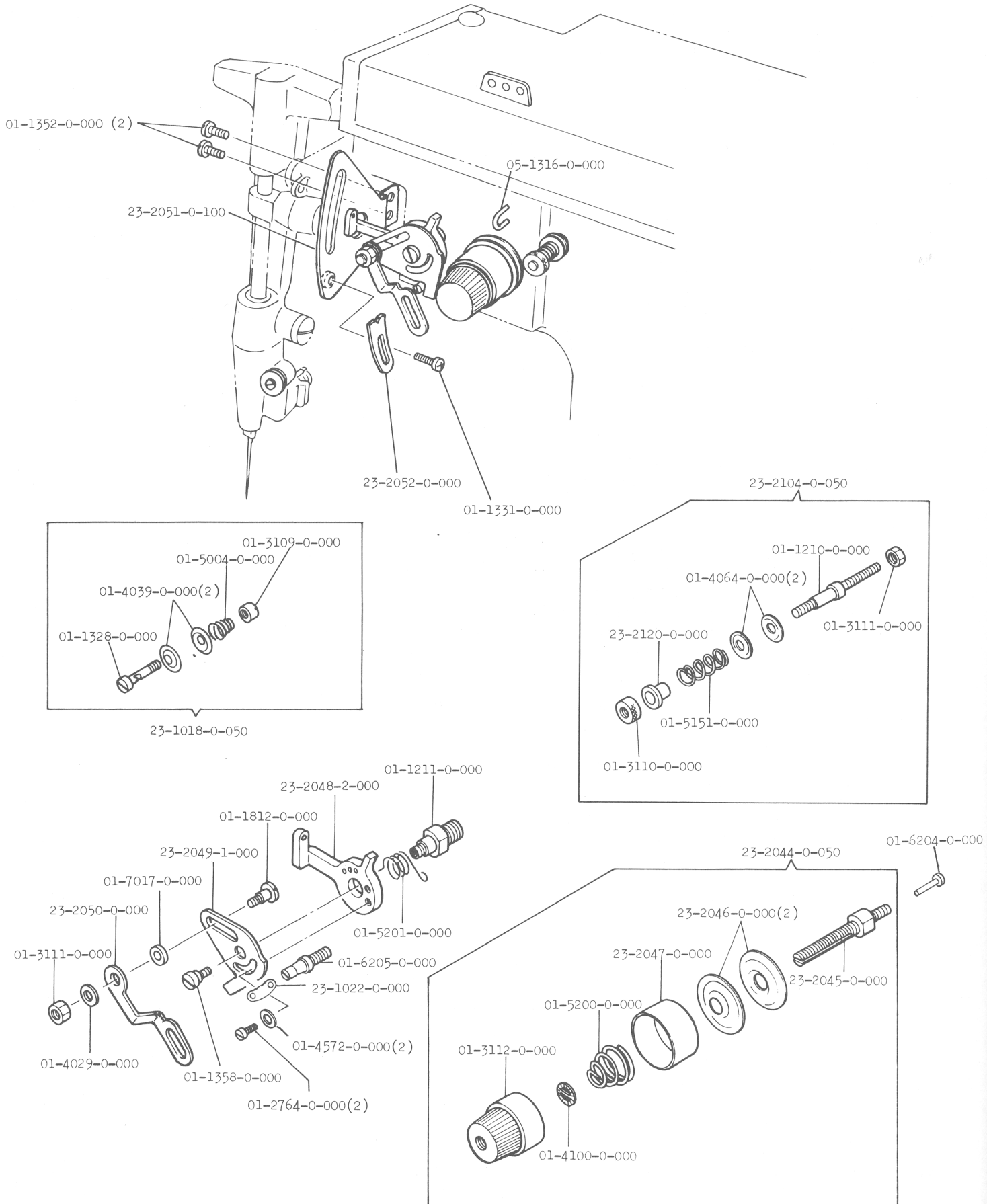
| No. | Description |
|---------------|----------------------------|
| 01-1209-0-000 | Stud |
| 01-1321-0-000 | Screw (2) |
| 01-1322-0-000 | Screw (2) |
| 01-1808-0-000 | Shoulder Screw |
| 01-1809-0-000 | Shoulder Screw |
| 01-1818-0-000 | Shoulder Screw |
| 01-1900-0-000 | Set Screw |
| 01-2146-0-000 | Screw |
| 01-3016-0-000 | Nut |
| 01-3105-0-000 | Nut-Round |
| 01-4011-0-000 | Washer (2) |
| 01-4011-0-000 | Washer |
| 01-4029-0-000 | Washer |
| 01-4035-0-000 | Washer |
| 01-4130-0-000 | Friction Washer |
| 01-4133-0-000 | Washer |
| 01-5108-0-000 | Spring |
| 01-5143-0-000 | Spring |
| 01-5449-0-000 | Spring |
| 01-6121-0-000 | Spring |
| 01-6122-0-000 | Cotter Pin |
| 01-6186-0-000 | Stud |
| 01-6186-0-000 | Stud |
| 01-6303-0-000 | Pin |
| 01-6340-0-000 | Stud |
| 01-8405-0-000 | Key |
| 20-0009-0-000 | Bracket Asm. |
| 20-0010-0-000 | Lever Asm. |
| 20-0011-0-000 | Release Rod |
| 20-0271-3-000 | Pawl |
| 20-0277-1-000 | Worm Gear |
| 20-0278-1-000 | Bearing Cam |
| 20-0281-0-000 | Bearing Stud |
| 20-0288-0-000 | Shifting Lever |
| 23-2033-0-000 | Feed Reversing Cam |
| 23-2034-0-000 | Pawl Stop Lever |
| 23-2036-0-000 | Release Lever Bracket |
| 23-2036-0-050 | Release Lever Bracket Asm. |
| 23-2037-0-000 | Release Lever |
| 23-2037-0-050 | Release Lever Asm. |

8. CLAMP PLATE SIDE SHIFTING MECH



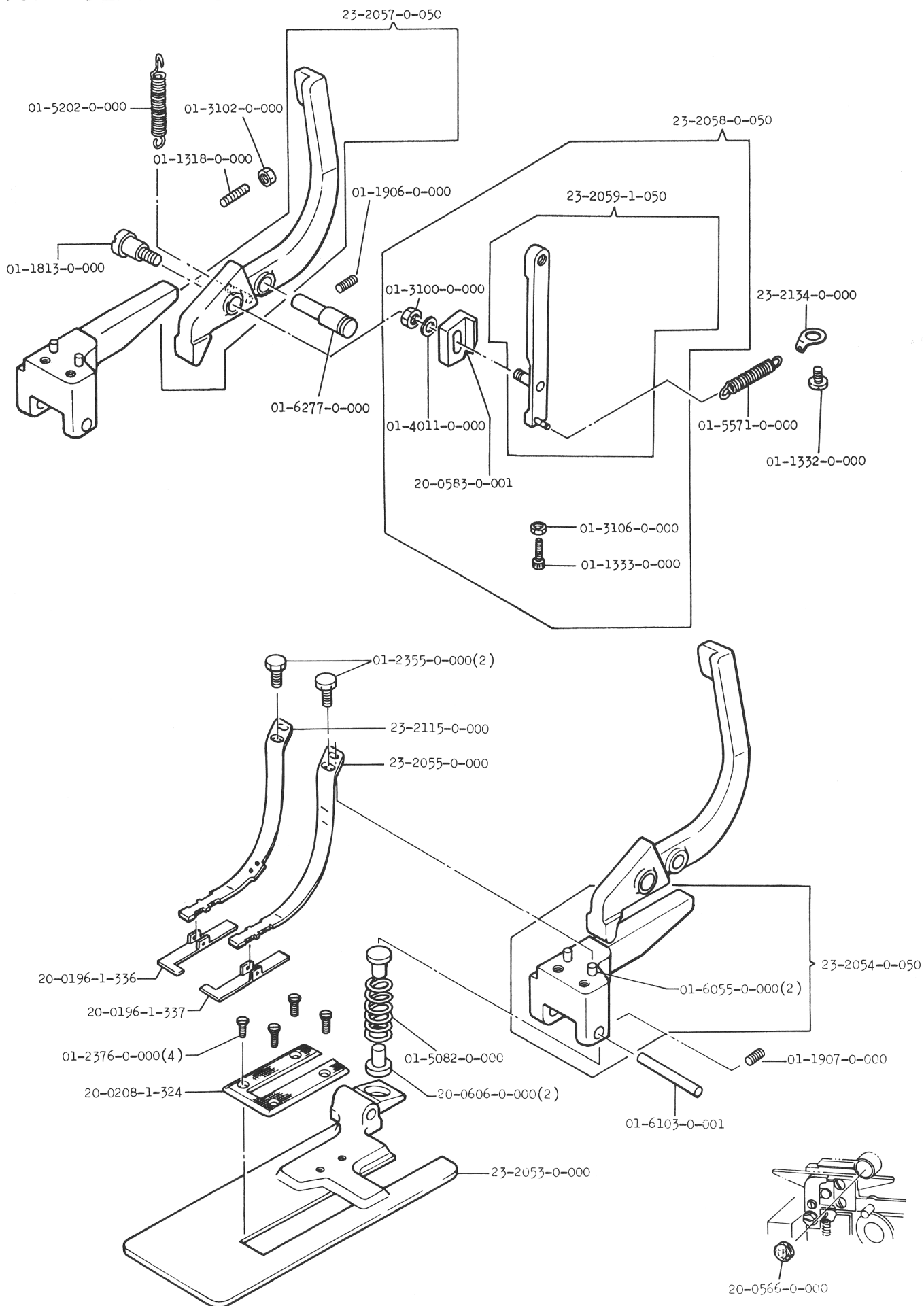
| No. | Description |
|---------------|------------------------|
| 01-1221-0-000 | Screw |
| 01-1323-0-000 | Screw (2) |
| 01-1325-0-000 | Screw (3) |
| 01-1326-0-000 | Screw |
| 01-1327-0-000 | Screw |
| 01-1390-0-000 | Screw |
| 01-1394-0-000 | Screw |
| 01-1810-0-000 | Shoulder Screw |
| 01-1833-0-000 | Shoulder Screw |
| 01-1902-0-000 | Set Screw |
| 01-2122-0-000 | Screw |
| 01-3001-0-000 | Nut |
| 01-4029-0-000 | Washer (2) |
| 01-4672-0-004 | Washer (2) |
| 01-5033-0-000 | Spring |
| 01-5106-0-000 | Spring |
| 01-6079-0-000 | Anchor Pin |
| 01-6108-0-000 | Stud |
| 01-6165-0-000 | Anchor Pin |
| 01-7013-0-000 | Roll |
| 01-7104-0-000 | Eccentric Bushing |
| 20-0225-1-000 | Tee Piece Asm. |
| 20-0230-2-000 | Adjustable Stop |
| 20-0230-2-050 | Adjustable Stop Asm. |
| 23-2039-0-000 | Cover Plate |
| 23-2040-0-000 | Stop |
| 23-2042-0-000 | Adjusting Finger |
| 23-2043-0-000 | Latch Asm. |
| 23-2133-0-000 | Finger Lever |
| 23-2133-0-050 | Finger Lever Asm. |
| 23-2133-0-100 | Finger Lever Stud Asm. |

9. THREAD TENSION & CONTROLS



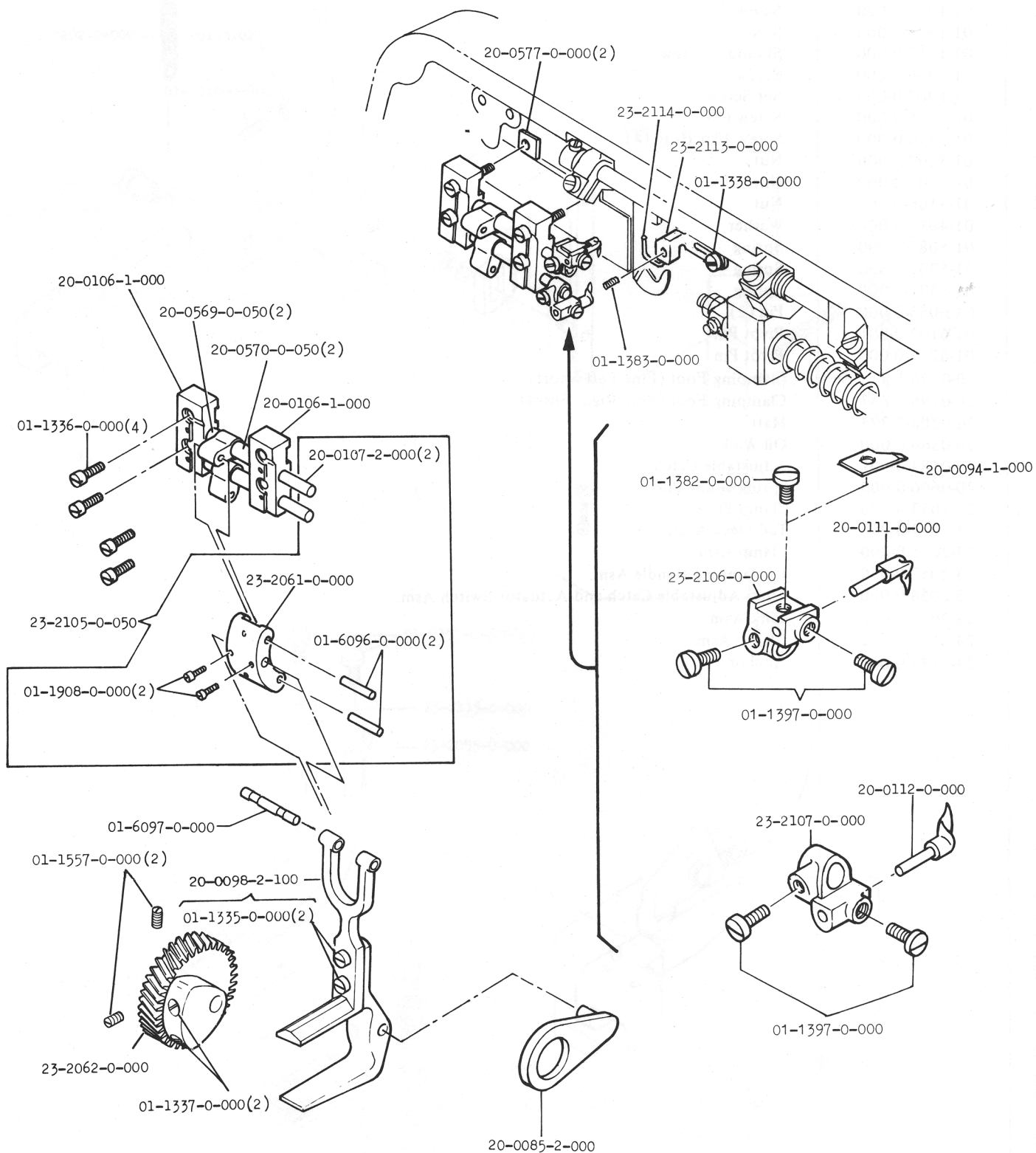
| No. | Description |
|---------------|------------------------------|
| 01-1210-0-000 | Tension Stud |
| 01-1211-0-000 | Stud |
| 01-1328-0-000 | Screw |
| 01-1331-0-000 | Screw |
| 01-1352-0-000 | Screw (2) |
| 01-1358-0-000 | Screw |
| 01-1812-0-000 | Screw |
| 01-2764-0-000 | Screw (2) |
| 01-3109-0-000 | Round Nut |
| 01-3110-0-000 | Adjustable Nut |
| 01-3111-0-000 | Nut |
| 01-3111-0-000 | Nut |
| 01-3112-0-000 | Nut |
| 01-4029-0-000 | Washer |
| 01-4039-0-000 | Tension Disc (2) |
| 01-4064-0-000 | Tension Disc (2) |
| 01-4100-0-000 | Washer |
| 01-4572-0-000 | Washer (2) |
| 01-5004-0-000 | Spring |
| 01-5151-0-000 | Spring |
| 01-5200-0-000 | Spring |
| 01-5201-0-000 | Spring |
| 01-6204-0-000 | Pin |
| 01-6205-0-000 | Pin |
| 01-7017-0-000 | Bushing |
| 05-1316-0-000 | Thread Smoother |
| 23-1018-0-050 | Needle Bar Tension Asm. |
| 23-1022-0-000 | Washer |
| 23-2044-0-050 | Tension (Large) Asm. |
| 23-2045-0-000 | Tension Stud (Large) |
| 23-2046-0-000 | Tension Disc (2) |
| 23-2047-0-000 | Releasing Disc |
| 23-2048-2-000 | Take-up Lever |
| 23-2049-1-000 | Adjusting Plate |
| 23-2050-0-000 | Link |
| 23-2051-0-100 | Thread Guide Plate |
| 23-2052-0-000 | Thread Guide Adjusting Plate |
| 23-2104-0-050 | Tension (Small) Asm. |
| 23-2120-0-000 | Check Collar |

10. CLAMPING



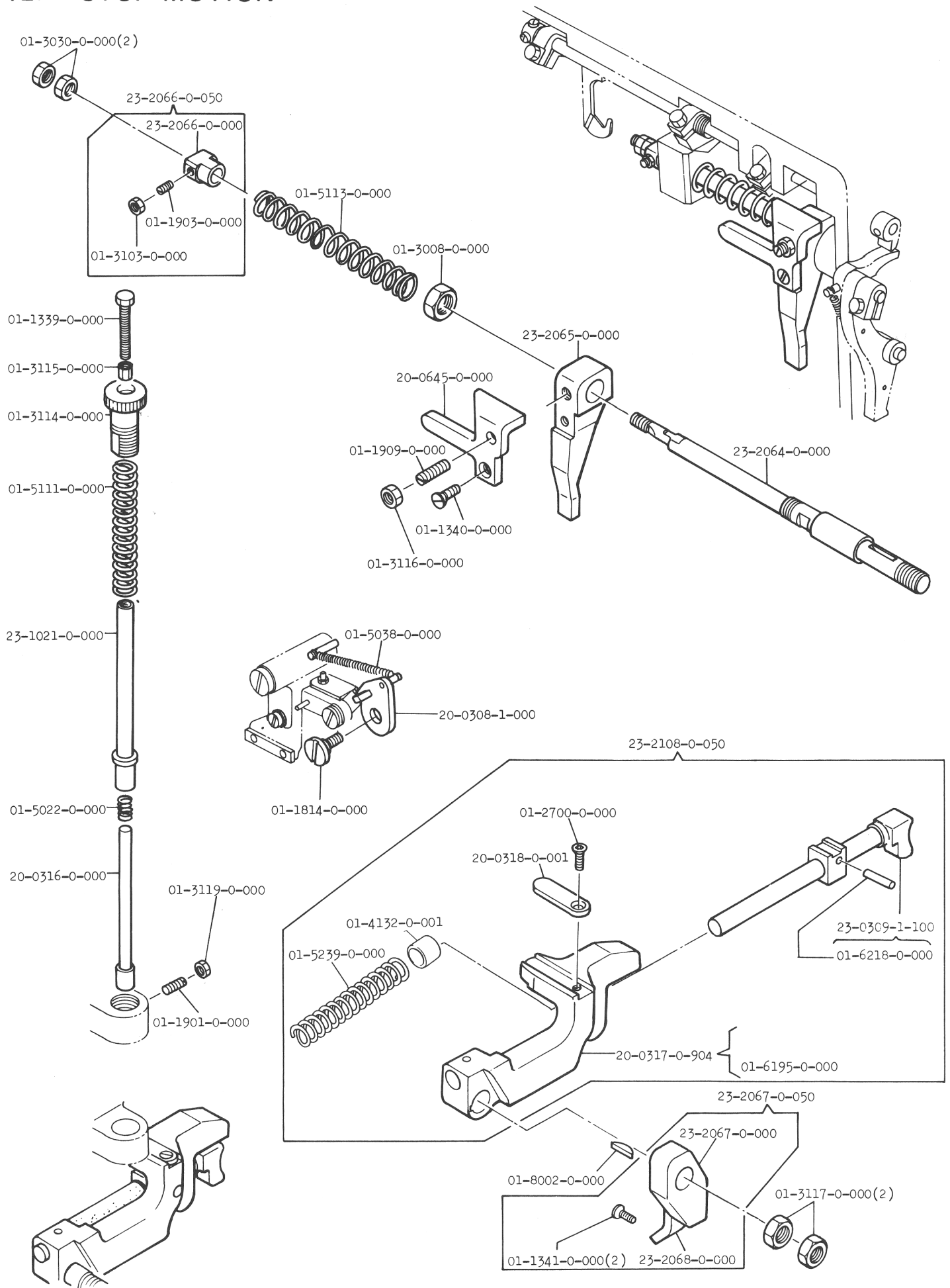
| No. | Description |
|---------------|-------------------------------------------------|
| 01-1318-0-000 | Screw |
| 01-1332-0-000 | Screw |
| 01-1333-0-000 | Screw |
| 01-1813-0-000 | Shoulder Screw |
| 01-1906-0-000 | Screw |
| 01-1907-0-000 | Set Screw |
| 01-2355-0-000 | Screw (2) |
| 01-2376-0-000 | Screw-Flat Head (4) |
| 01-3100-0-000 | Nut |
| 01-3102-0-000 | Nut |
| 01-3106-0-000 | Nut |
| 01-4011-0-000 | Washer |
| 01-5082-0-000 | Spring |
| 01-5202-0-000 | Spring |
| 01-5571-0-000 | Spring |
| 01-6055-0-000 | Pin (2) |
| 01-6103-0-001 | Pivot Pin |
| 01-6277-0-000 | Pivot Pin |
| 20-0196-1-336 | Clamping Foot (Fine Left Short) |
| 20-0196-1-337 | Clamping Foot (Fine Right Short) |
| 20-0208-1-324 | Matt |
| 20-0566-0-000 | Oil Wick |
| 20-0583-0-001 | Adjustable Catch |
| 20-0606-0-000 | Spring Guide (2) |
| 23-2053-0-000 | Clamp Plate |
| 23-2054-0-050 | Tail Piece Asm. |
| 23-2055-0-000 | Clamp Arm |
| 23-2057-0-050 | Unclamping Handle Asm. |
| 23-2058-0-050 | Link, Adjustable Catch and Actuator Switch Asm. |
| 23-2059-1-050 | Link Asm. |
| 23-2115-0-000 | Clamp Arm |
| 23-2134-0-000 | Anchor |

11. LOOPER DRIVE



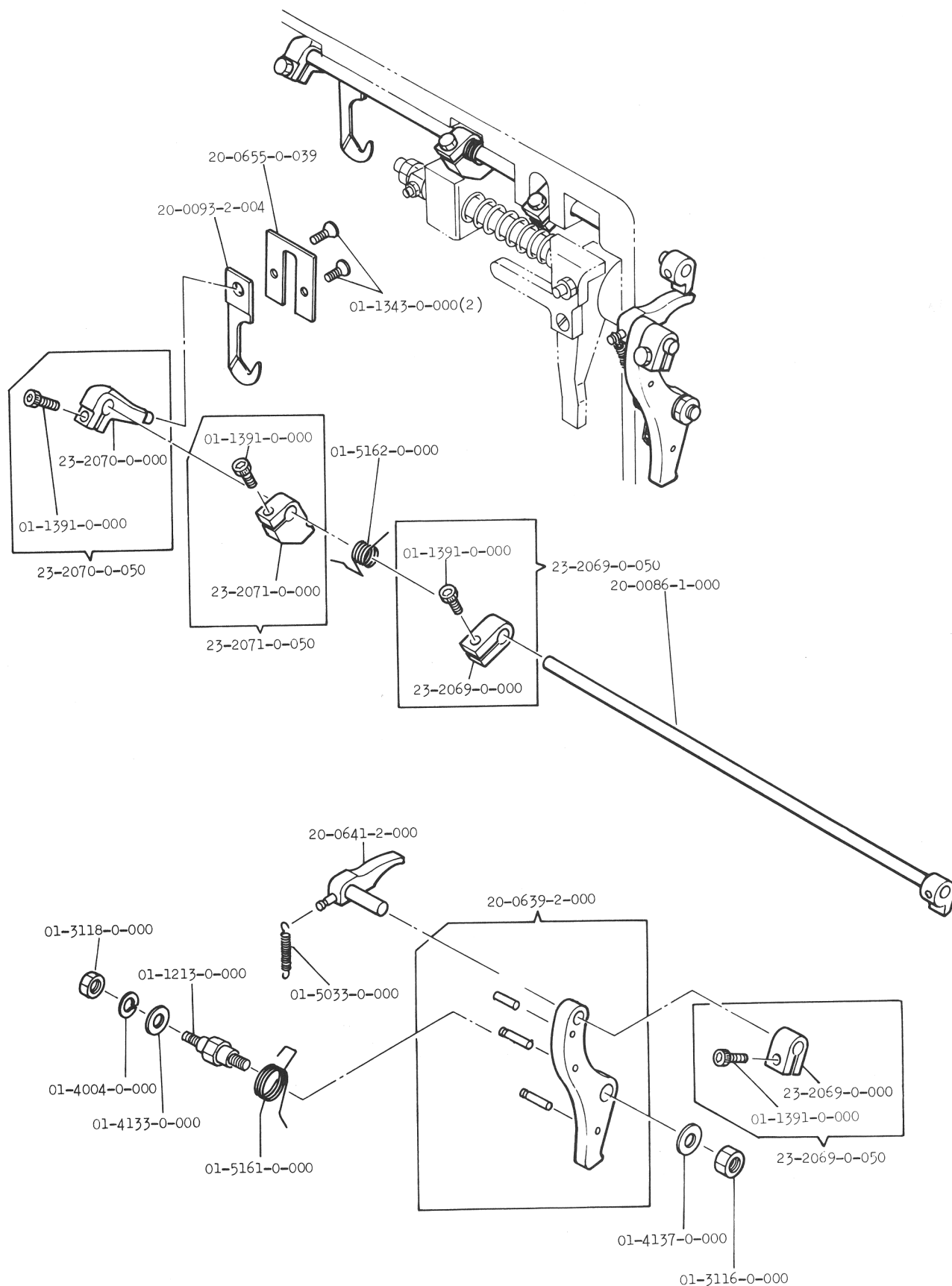
| No. | Description |
|---------------|-------------------------------------------------------------|
| 01-1335-0-000 | Screw (2) |
| 01-1336-0-000 | Screw (4) |
| 01-1337-0-000 | Screw (large) (2) |
| 01-1338-0-000 | Screw |
| 01-1382-0-000 | Screw |
| 01-1397-0-000 | Screw (2) |
| 01-1397-0-000 | Screw (2) |
| 01-1557-0-000 | Screw (Small) (2) |
| 01-1908-0-000 | Screw (2) |
| 01-2401-0-000 | Set Screw |
| 01-6096-0-000 | Pivot Pin (2) |
| 01-6097-0-000 | Pivot Pin |
| 20-0085-2-000 | Rocker Asm. |
| 20-0094-1-000 | Knife-Thread Trimmer |
| 20-0098-2-100 | Looper Cam Follower Asm. |
| 20-0106-1-000 | Bearing Blocks, Pair (replace both blocks at the same time) |
| 20-0107-2-000 | Looper Drive Shaft (2) |
| 20-0111-0-000 | First Looper |
| 20-0112-0-000 | Second Looper |
| 20-0569-0-050 | Spacing Collar (Parts are sold in pairs only) |
| 20-0570-0-050 | Long Spacing Collar (Parts are sold in pairs only) |
| 20-0577-0-000 | Key (2) |
| 23-2061-0-000 | Rocker |
| 23-2062-0-000 | Feed Gear and Looper Cam |
| 23-2105-0-050 | Looper Drive Shaft Asm. |
| 23-2106-0-000 | First Looper Holder |
| 23-2107-0-000 | Second Looper Holder |
| 23-2113-0-000 | Needle Guard Bracket |
| 23-2114-0-000 | Needle Guard Wire |

12. STOP MOTION



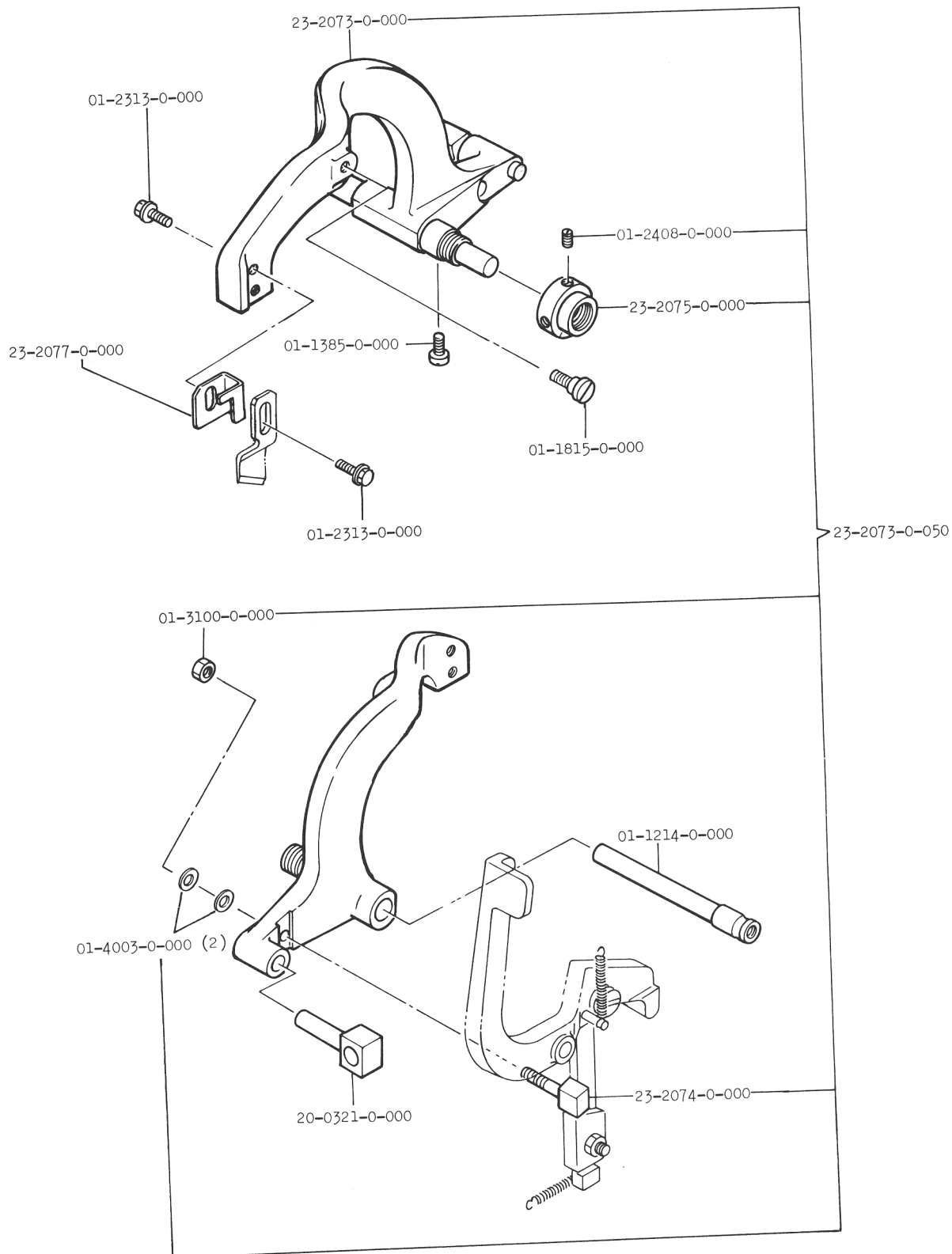
| No. | Description |
|---------------|------------------------------|
| 01-1339-0-000 | Screw |
| 01-1340-0-000 | Screw-Flat Head |
| 01-1341-0-000 | Screw (2) |
| 01-1814-0-000 | Shoulder Screw |
| 01-1901-0-000 | Set Screw |
| 01-1903-0-000 | Set Screw |
| 01-1909-0-000 | Set Screw |
| 01-2700-0-000 | Screw-Flat Head |
| 01-3008-0-000 | Nut |
| 01-3030-0-000 | Lock Nut (2) |
| 01-3103-0-000 | Lock Nut |
| 01-3114-0-000 | Adjusting Nut |
| 01-3115-0-000 | Lock Nut |
| 01-3116-0-000 | Lock Nut |
| 01-3117-0-000 | Lock Nut (2) |
| 01-3119-0-000 | Nut |
| 01-4132-0-001 | Spacer |
| 01-5022-0-000 | Spring |
| 01-5038-0-000 | Spring |
| 01-5111-0-000 | Spring |
| 01-5113-0-000 | Spring |
| 01-5239-0-000 | Spring |
| 01-6195-0-000 | Stud |
| 01-6218-0-000 | Taper Pin |
| 01-8002-0-000 | Key |
| 20-0308-1-000 | Latch |
| 20-0316-0-000 | Plunger |
| 20-0317-0-904 | Stop Bolt Holder Asm. |
| 20-0318-0-001 | Anvil |
| 20-0645-0-000 | Bracket |
| 23-0309-1-100 | Stop Bolt Asm. |
| 23-1021-0-000 | Guide Rod |
| 23-2064-0-000 | Shaft |
| 23-2065-0-000 | Arm |
| 23-2066-0-000 | Adjustable Collar |
| 23-2066-0-050 | Adjustable Collar Asm. |
| 23-2067-0-000 | Actuator |
| 23-2067-0-050 | Actuator Comp. |
| 23-2068-0-000 | Plate-Actuator |
| 23-2108-0-050 | Stop Bolt & Bolt Holder Asm. |

13. THREAD TRIMMER



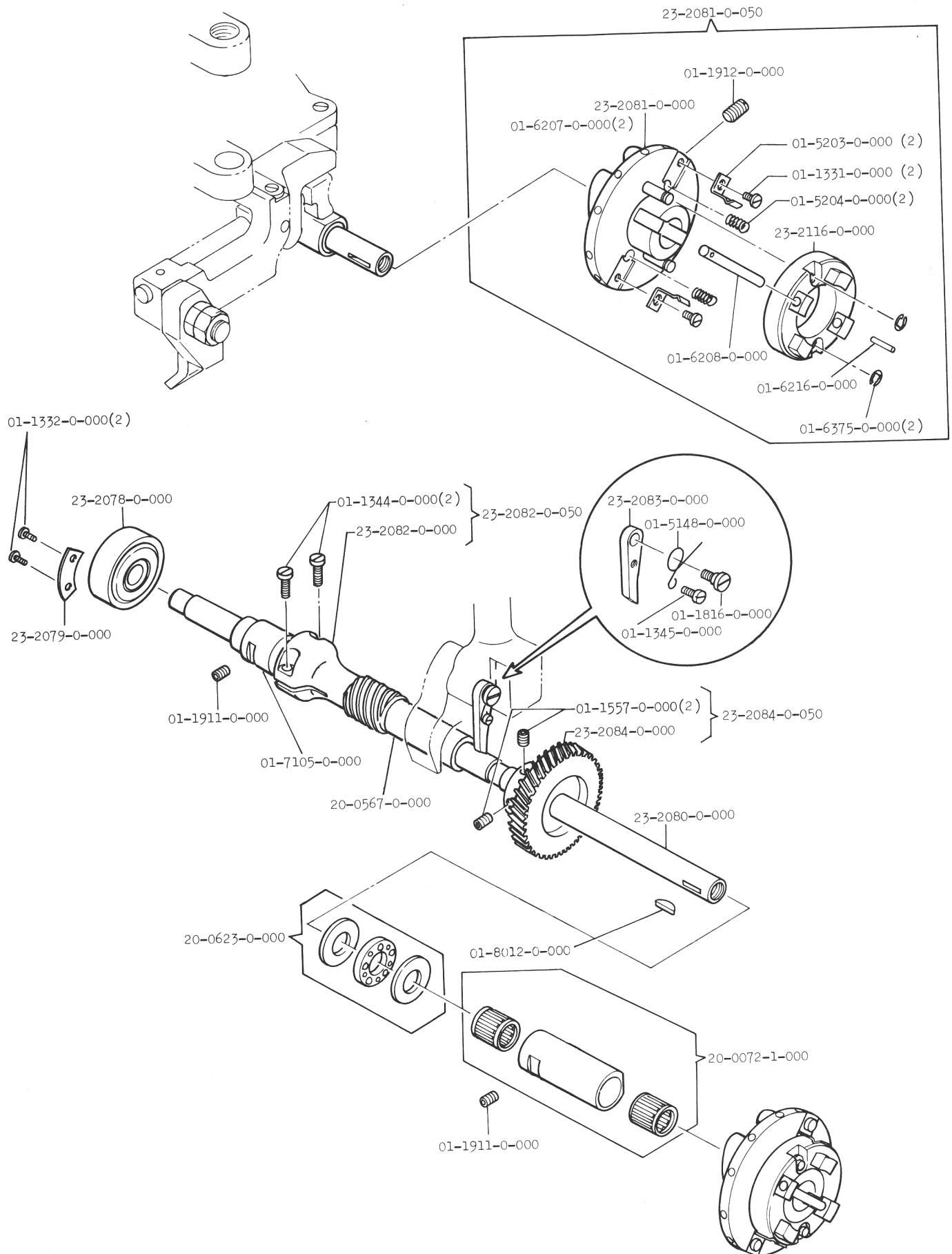
| No. | Description |
|---------------|-----------------------|
| 01-1213-0-000 | Stud |
| 01-1343-0-000 | Screw-Flat Head (2) |
| 01-1391-0-000 | Screw |
| 01-1391-0-000 | Screw |
| 01-1391-0-000 | Screw |
| 01-1391-0-000 | Screw |
| 01-3116-0-000 | Nut |
| 01-3118-0-000 | Nut |
| 01-4004-0-000 | Lock Washer |
| 01-4133-0-000 | Washer |
| 01-4137-0-000 | Washer |
| 01-5033-0-000 | Spring |
| 01-5161-0-000 | Spring |
| 01-5162-0-000 | Spring |
| 20-0086-1-000 | Ratchet and Rod Asm. |
| 20-0093-2-004 | Trimmer Hook |
| 20-0639-2-000 | Lever Asm. |
| 20-0641-2-000 | Pawl |
| 20-0655-0-039 | Cover Plate |
| 23-2069-0-000 | Safety Arm (2) |
| 23-2069-0-050 | Safety Arm Asm. (2) |
| 23-2070-0-000 | Trimmer Actuator |
| 23-2070-0-050 | Trimmer Actuator Asm. |
| 23-2071-0-000 | Stop Arm |
| 23-2071-0-050 | Stop Arm Asm |

14. CUTTING LEVER



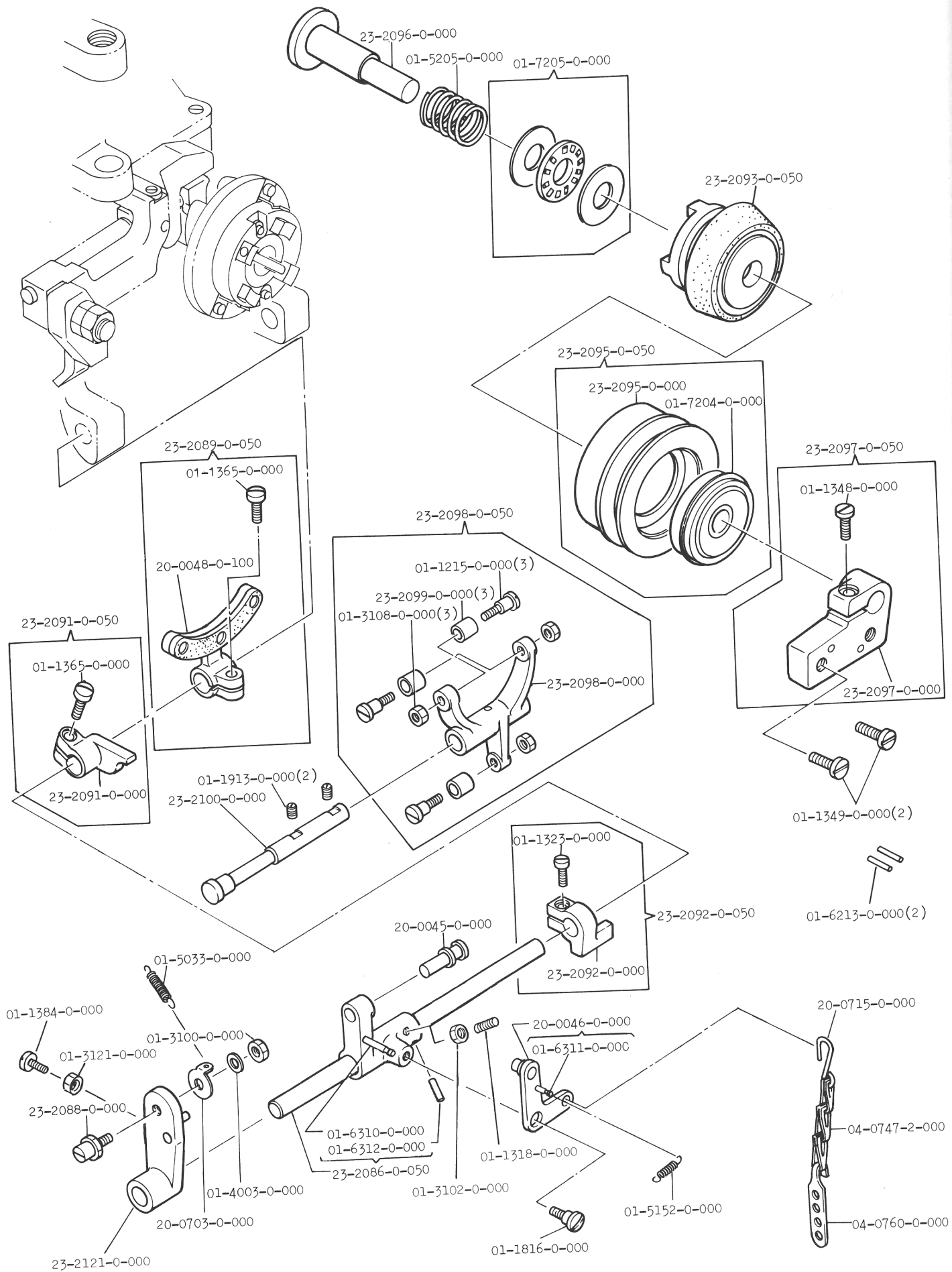
| No. | Description |
|--------------------------------------------------------------------------------------------------------------------------------------------------------------------------------------------------------------------------------------------|------------------------------------------------------------------------------------------------------------------------------------------------------------------------------------------------|
| 01-1214-0-000 01-1385-0-000 01-1815-0-000 01-2313-0-000 01-2313-0-000 01-2408-0-000 01-3100-0-000 01-4003-0-000 20-0321-0-000 23-2073-0-000 23-2073-0-050 23-2074-0-000 23-2075-0-000 23-2077-0-000 | Pivot Stud Set Screw Shoulder Screw Screw Screw Set Screw Nut Lock Washer (2) Pivot Block Cutting Lever Cutting Lever Asm. Stop Post Collar Knife Plate |

15. MAIN SHAFT



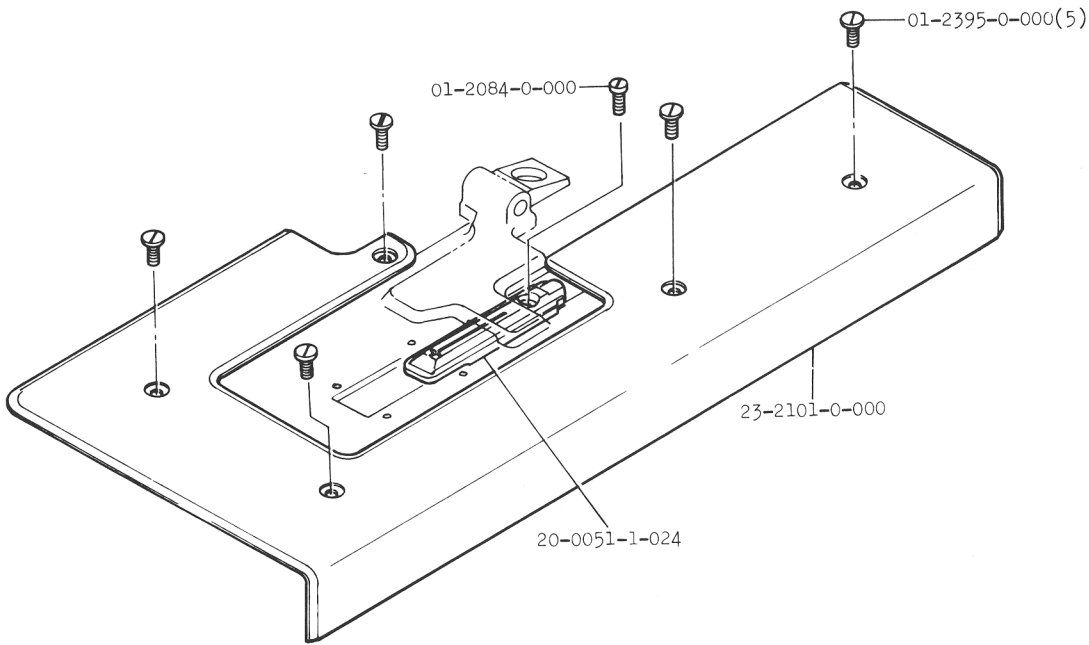
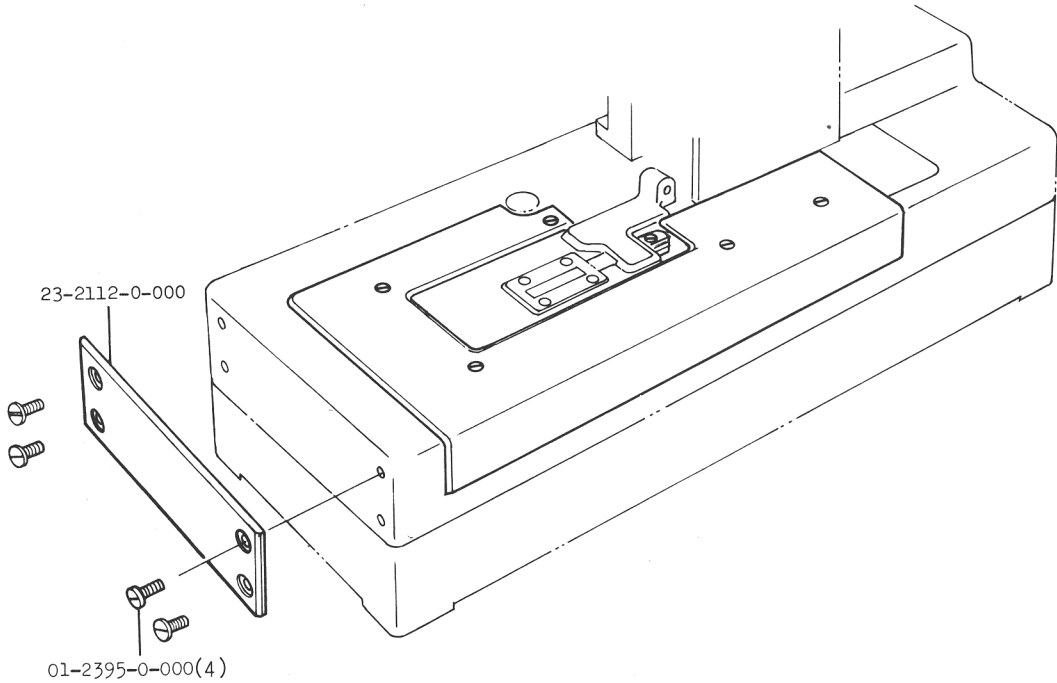
| No. | Description |
|---------------|-------------------|
| 01-1331-0-000 | Screw (2) |
| 01-1332-0-000 | Screw (2) |
| 01-1344-0-000 | Screw (2) |
| 01-1345-0-000 | Screw |
| 01-1557-0-000 | Set Screw (2) |
| 01-1816-0-000 | Shoulder Screw |
| 01-1911-0-000 | Set Screw (2) |
| 01-1912-0-000 | Set Screw |
| 01-5148-0-000 | Spring |
| 01-5203-0-000 | Spring (2) |
| 01-5204-0-000 | Spring (2) |
| 01-6207-0-000 | Ring Pin (2) |
| 01-6208-0-000 | Pin |
| 01-6216-0-000 | Pin |
| 01-6375-0-000 | Snap Ring (2) |
| 01-7105-0-000 | Bushing |
| 01-8012-0-000 | Key |
| 20-0072-1-000 | Bushing Asm. |
| 20-0567-0-000 | Space Collar |
| 20-0623-0-000 | Bearing-Thrust |
| 23-2078-0-000 | Bearing |
| 23-2079-0-000 | Retaining Plate |
| 23-2080-0-000 | Shaft |
| 23-2081-0-000 | Drive Pulley |
| 23-2081-0-050 | Drive Pulley Asm. |
| 23-2082-0-000 | Worm Gear |
| 23-2082-0-050 | Worm Gear Asm. |
| 23-2083-0-000 | Pawl |
| 23-2084-0-000 | Gear (Large) |
| 23-2084-0-050 | Gear Asm. |
| 23-2116-0-000 | Ring |

16. CLUTCH



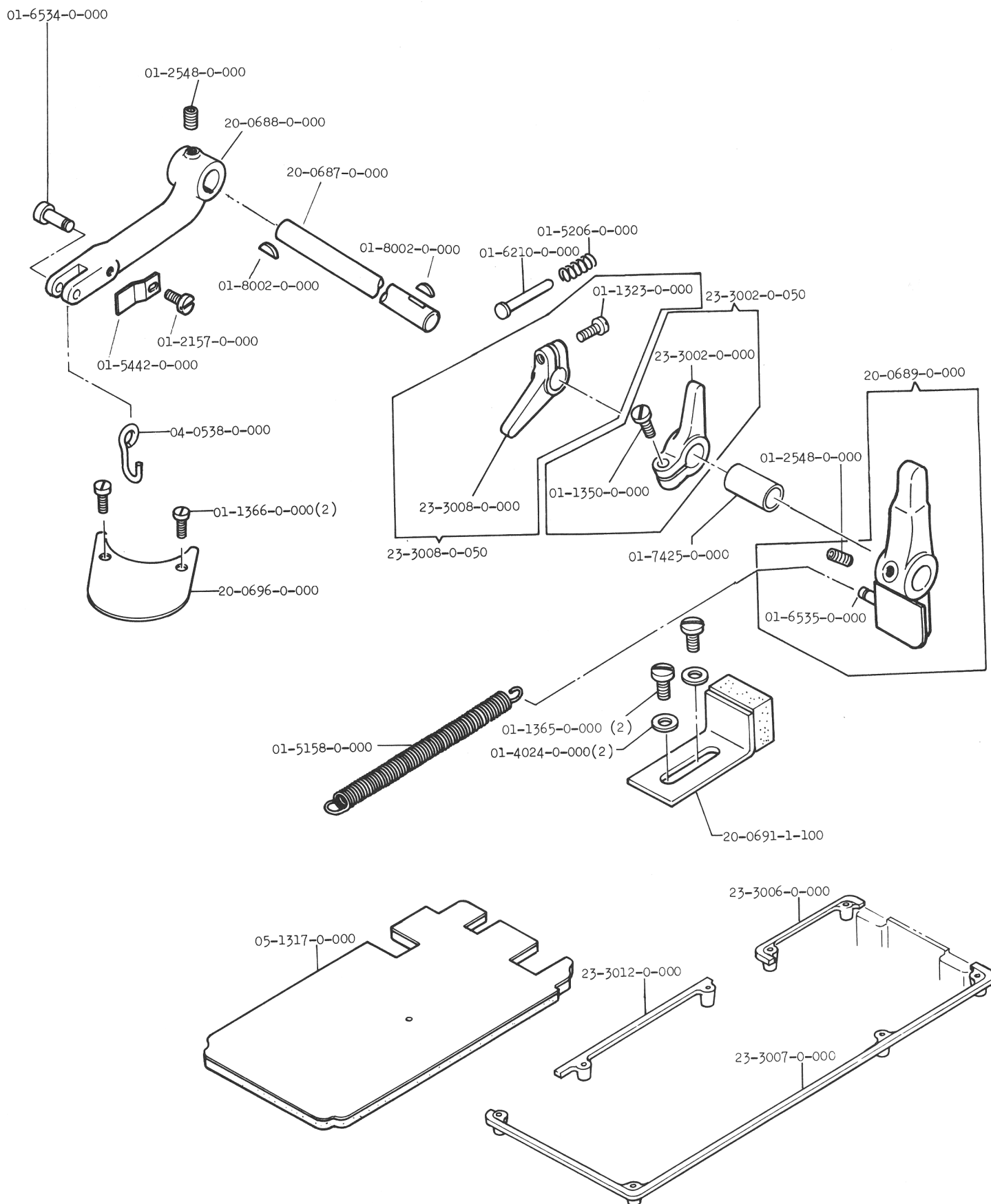
| No. | Description |
|---------------|-------------------------------|
| 01-1215-0-000 | Stud (3) |
| 01-1318-0-000 | Screw |
| 01-1323-0-000 | Screw |
| 01-1348-0-000 | Screw |
| 01-1349-0-000 | Screw (2) |
| 01-1365-0-000 | Screw |
| 01-1365-0-000 | Screw |
| 01-1384-0-000 | Screw |
| 01-1816-0-000 | Shoulder Screw |
| 01-1913-0-000 | Set Screw (2) |
| 01-3100-0-000 | Nut |
| 01-3102-0-000 | Nut |
| 01-3108-0-000 | Nut (3) |
| 01-3121-0-000 | Nut |
| 01-4003-0-000 | Lock Washer |
| 01-5033-0-000 | Spring |
| 01-5152-0-000 | Spring |
| 01-5205-0-000 | Spring |
| 01-6213-0-000 | Pin (2) |
| 01-6310-0-000 | Pin |
| 01-6311-0-000 | Pin |
| 01-6312-0-000 | Taper Pin |
| 01-7204-0-000 | Bearing-Ball |
| 01-7205-0-000 | Bearing-Thrust |
| 04-0747-2-000 | Chain |
| 04-0760-0-000 | Adjustable Link |
| 20-0045-0-000 | Plunger |
| 20-0046-0-000 | Bell Crank Asm. |
| 20-0048-0-100 | Brake Shoe Asm. |
| 20-0703-0-000 | Anchor |
| 20-0715-0-000 | Chain Hook |
| 23-2086-0-050 | Shifter Shaft Asm. |
| 23-2088-0-000 | Shifter Stud |
| 23-2089-0-050 | Brake Shoe and Screw Asm. |
| 23-2091-0-000 | Clutch Driving Arm |
| 23-2091-0-050 | Clutch Driving Arm Asm. |
| 23-2092-0-000 | Clutch Start Arm (Right) |
| 23-2092-0-050 | Clutch Start Arm (Right) Asm. |
| 23-2093-0-050 | Clutch Asm. |
| 23-2095-0-000 | Clutch Pulley |
| 23-2095-0-050 | Clutch Pulley Asm. |
| 23-2096-0-000 | Shaft |
| 23-2097-0-000 | Bracket |
| 23-2097-0-050 | Bracket Asm. |
| 23-2098-0-000 | Clutch Shifter |
| 23-2098-0-050 | Clutch Shifter Asm. |
| 23-2099-0-000 | Roller (3) |
| 23-2100-0-000 | Shaft |
| 23-2121-0-000 | Shifter Lever |

17. BED PLATE PARTS



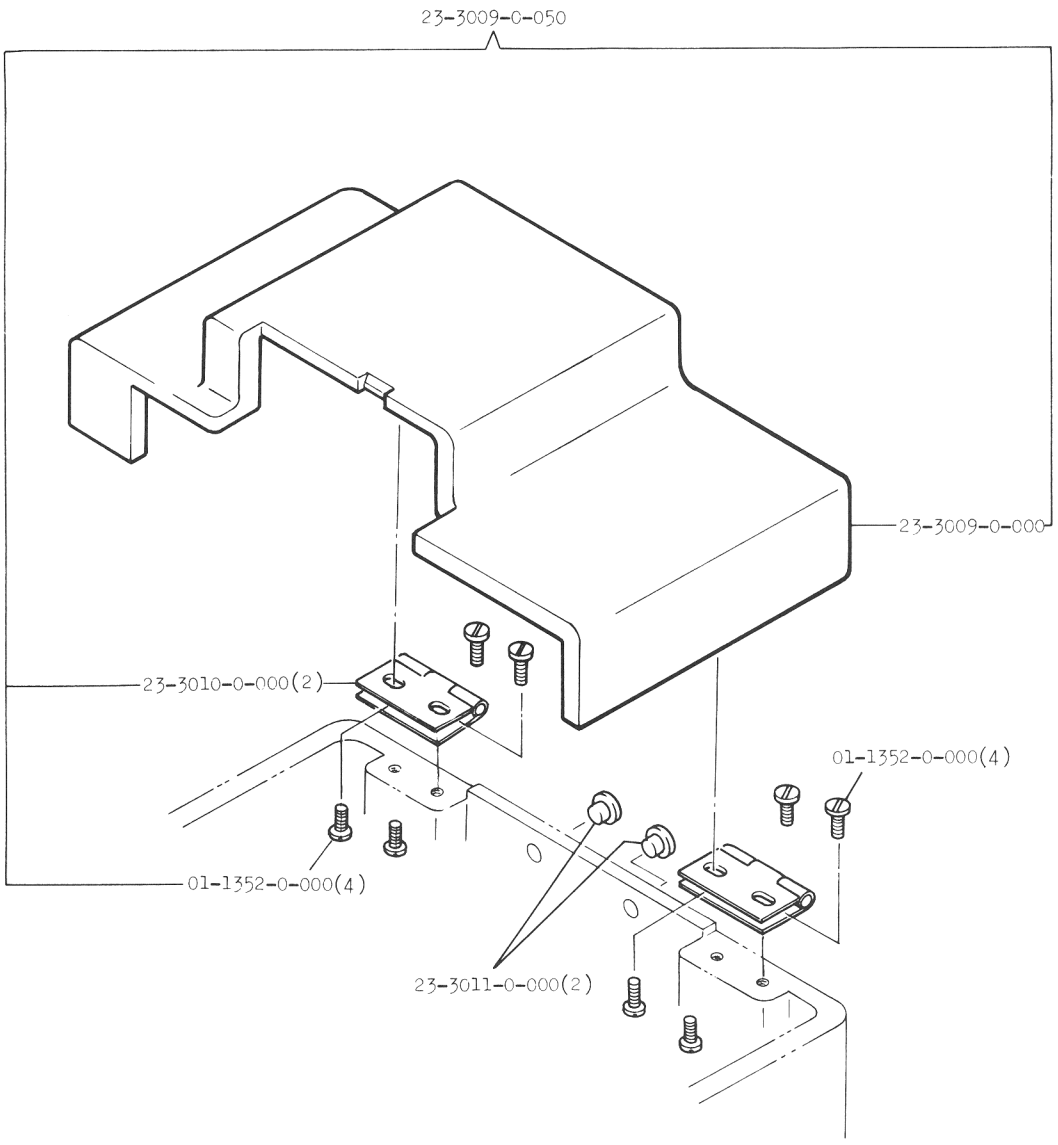
| No. | Description |
|---------------|------------------------|
| 01-2084-0-000 | Screw |
| 01-2395-0-000 | Screw (5) |
| 01-2395-0-000 | Screw (4) |
| 20-0051-1-024 | Throat Plate 3/32 Reg. |
| 23-2101-0-000 | Cover Plate |
| 23-2112-0-000 | Bed Side Cover |

18. BASE & COMPONENT PARTS



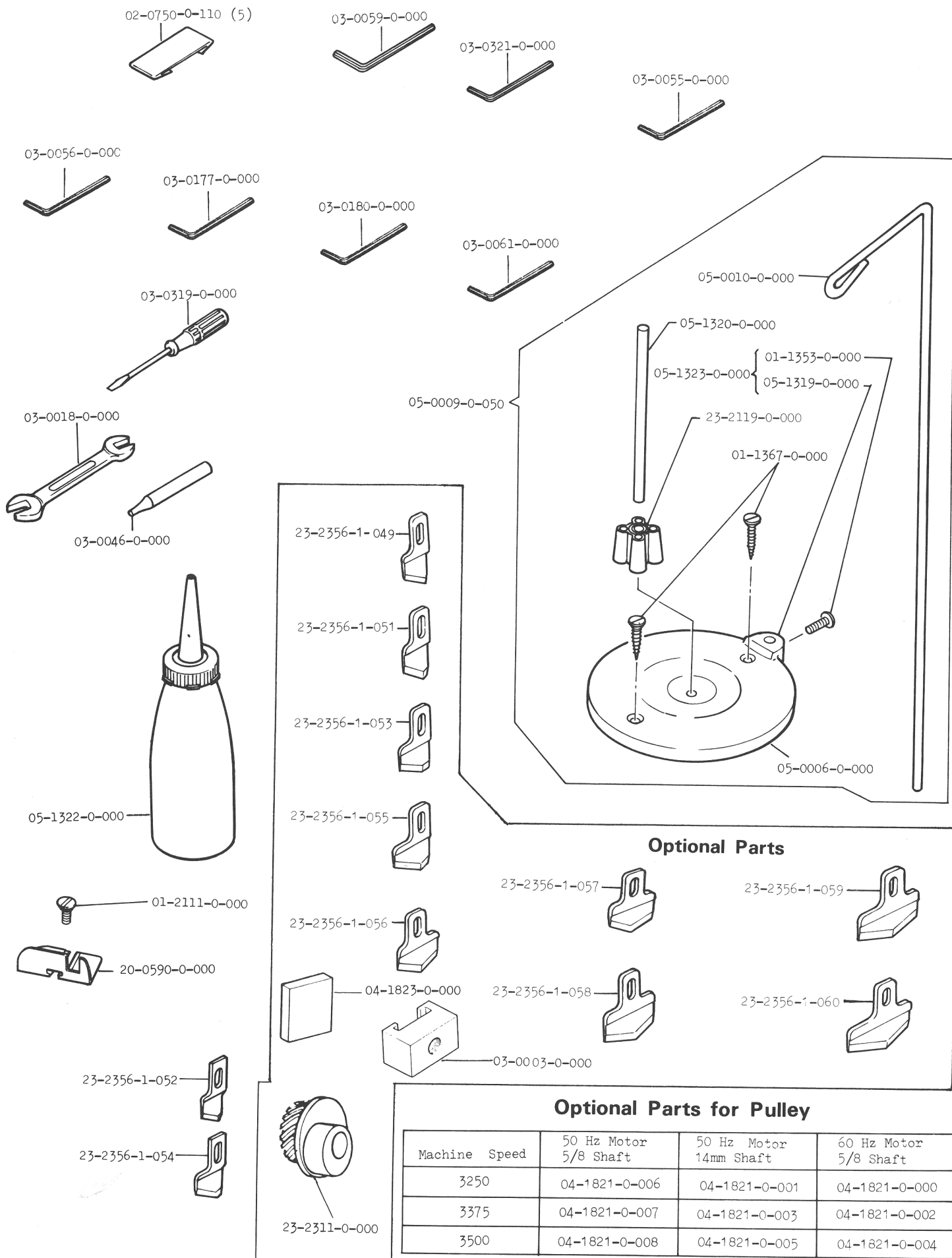
| No. | Description |
|---------------|------------------------------|
| 01-1323-0-000 | Screw |
| 01-1350-0-000 | Screw |
| 01-1351-0-000 | Screw |
| 01-1365-0-000 | Screw (2) |
| 01-1366-0-000 | Screw (2) |
| 01-2157-0-000 | Screw |
| 01-2548-0-000 | Set Screw (2) |
| 01-4024-0-000 | Washer (2) |
| 01-5158-0-000 | Spring |
| 01-5206-0-000 | Spring |
| 01-5442-0-000 | Clip |
| 01-6210-0-000 | Pin |
| 01-6534-0-000 | Pin |
| 01-6535-0-000 | Pin-Anchor |
| 01-7425-0-000 | Collar |
| 01-8002-0-000 | Key (2) |
| 04-0538-0-000 | Hook |
| 05-1317-0-000 | Pad |
| 20-0687-0-000 | Shaft |
| 20-0688-0-000 | Lever |
| 20-0689-0-000 | Arm Asm. |
| 20-0691-1-100 | Bumper Asm. |
| 20-0696-0-000 | Cover |
| 23-3002-0-000 | Trip Lever |
| 23-3002-0-050 | Trip Lever Asm. |
| 23-3006-0-000 | Bumper (Small) Neoprene |
| 23-3007-0-000 | Bumper (Large) Neoprene |
| 23-3008-0-000 | Clutch Start Arm (Left) |
| 23-3008-0-050 | Clutch Start Arm (Left) Asm. |
| 23-3012-0-000 | Bumper (Middle) Neoprene |

19. BELT GUARD



| No. | Description |
|---------------|----------------------------|
| 01-1352-0-000 | Screw (4) |
| 01-1352-0-000 | Screw (4) |
| 23-3009-0-000 | Belt Guard Cover |
| 23-3009-0-050 | Belt Guard Cover Asm. |
| 23-3010-0-000 | Belt Guard Cover Hinge (2) |
| 23-3011-0-000 | Bumper (2) |

20. ATTACHMENT & ACCESSORIES



| No. | Description |
|---------------------------------|-------------------------------|
| 01-1353-0-000 | Screw |
| 01-1367-0-000 | Wood Screw (2) |
| 01-2111-0-000 | Screw |
| 02-0750-0-110 | Needle (5) |
| 03-0018-0-000 | Wrench (3/8" * 5/16") |
| 03-0046-0-000 | Crank |
| 03-0055-0-000 | Key Wrench |
| 03-0056-0-000 | Key Wrench |
| 03-0059-0-000 | 1/8" Key Wrench |
| 03-0061-0-000 | Key Wrench |
| 03-0177-0-000 | Key Wrench |
| 03-0180-0-000 | Key Wrench |
| 03-0319-0-000 | Screw Driver (Small) |
| 03-0321-0-000 | 3/32" Key Wrench |
| 05-0006-0-000 | Felt Pad |
| 05-0009-0-050 | Thread Stand Comp. |
| 05-0010-0-000 | Rod |
| 05-1319-0-000 | Thread Stand Base |
| 05-1320-0-000 | Thread Stand Base (Spool Pin) |
| 05-1322-0-000 | Oiler |
| 05-1323-0-000 | Thread Stand Base Comp. |
| 20-0590-0-000 | Gauge |
| 23-2119-0-000 | Spool Shield |
| 23-2356-1-052 | Knife (1/2"-13) |
| 23-2356-1-054 | Knife (5/8"-16) |
| <i>23-2356-1-050 3/8" knife</i> | |

Optional Parts

| No. | Description |
|---------------|----------------------|
| 03-0003-0-000 | Wheel Puller |
| 04-1823-0-000 | Pad (4) |
| 23-2311-0-000 | Eccentric-Feed Drive |
| 23-2356-1-049 | Knife (1/4"-6) |
| 23-2356-1-051 | Knife (7/16"-11) |
| 23-2356-1-053 | Knife (9/16"-14) |
| 23-2356-1-055 | Knife (3/4"-19) |
| 23-2356-1-056 | Knife (7/8"-22) |
| 23-2356-1-057 | Knife (1"-25) |
| 23-2356-1-058 | Knife (1-1/8"-29) |
| 23-2356-1-059 | Knife (1-1/4"-32) |
| 23-2356-1-060 | Knife (1-3/8"-35) |

PARTS INDEX

| PART NUMBER | PAGE | PART NUMBER | PAGE | PART NUMBER | PAGE | PART NUMBER | PAGE |
|---------------|------|---------------|------|---------------|------|---------------|------|
| 01-1044-0-000 | 6 | 01-1343-0-000 | 13 | 01-1901-0-000 | 12 | 01-3104-0-000 | 6 |
| 01-1201-0-000 | 2 | 01-1344-0-000 | 15 | 01-1902-0-000 | 3 | 01-3105-0-000 | 7 |
| 01-1202-0-000 | 2 | 01-1345-0-000 | 15 | 01-1902-0-000 | 8 | 01-3106-0-000 | 5 |
| 01-1203-0-000 | 3 | 01-1348-0-000 | 16 | 01-1903-0-000 | 4 | 01-3106-0-000 | 10 |
| 01-1204-0-000 | 4 | 01-1349-0-000 | 16 | 01-1903-0-000 | 12 | 01-3107-0-000 | 6 |
| 01-1205-0-000 | 6 | 01-1350-0-000 | 18 | 01-1905-0-000 | 4 | 01-3108-0-000 | 6 |
| 01-1209-0-000 | 7 | 01-1352-0-000 | 1 | 01-1906-0-000 | 5 | 01-3108-0-000 | 16 |
| 01-1210-0-000 | 9 | 01-1352-0-000 | 9 | 01-1906-0-000 | 10 | 01-3109-0-000 | 9 |
| 01-1211-0-000 | 9 | 01-1352-0-000 | 19 | 01-1907-0-000 | 10 | 01-3110-0-000 | 9 |
| 01-1213-0-000 | 13 | 01-1353-0-000 | 20 | 01-1908-0-000 | 11 | 01-3111-0-000 | 9 |
| 01-1214-0-000 | 14 | 01-1356-0-000 | 1 | 01-1909-0-000 | 12 | 01-3112-0-000 | 9 |
| 01-1215-0-000 | 16 | 01-1357-0-000 | 1 | 01-1910-0-000 | 14 | 01-3113-0-000 | 9 |
| 01-1216-0-000 | 5 | 01-1358-0-000 | 1 | 01-1911-0-000 | 4 | 01-3114-0-000 | 12 |
| 01-1220-0-000 | 6 | 01-1358-0-000 | 9 | 01-1911-0-000 | 15 | 01-3115-0-000 | 12 |
| 01-1221-0-000 | 8 | 01-1359-0-000 | 1 | 01-1912-0-000 | 15 | 01-3116-0-000 | 12 |
| 01-1300-0-000 | 1 | 01-1360-0-000 | 1 | 01-1913-0-000 | 16 | 01-3116-0-000 | 13 |
| 01-1301-0-000 | 1 | 01-1361-0-000 | 4 | 01-2084-0-000 | 17 | 01-3117-0-000 | 12 |
| 01-1304-0-000 | 1 | 01-1362-0-000 | 6 | 01-2111-0-000 | 20 | 01-3118-0-000 | 13 |
| 01-1306-0-000 | 2 | 01-1364-0-000 | 3 | 01-2122-0-000 | 6 | 01-3119-0-000 | 12 |
| 01-1307-0-000 | 2 | 01-1365-0-000 | 16 | 01-2122-0-000 | 8 | 01-3121-0-000 | 16 |
| 01-1308-0-000 | 2 | 01-1365-0-000 | 18 | 01-2123-0-000 | 6 | 01-3153-0-000 | 4 |
| 01-1309-0-000 | 2 | 01-1366-0-000 | 18 | 01-2146-0-000 | 7 | 01-4002-0-000 | 4 |
| 01-1310-0-000 | 3 | 01-1367-0-000 | 20 | 01-2157-0-000 | 18 | 01-4003-0-000 | 14 |
| 01-1311-0-000 | 3 | 01-1370-0-000 | 3 | 01-2193-0-000 | 2 | 01-4003-0-000 | 16 |
| 01-1312-0-000 | 4 | 01-1381-0-000 | 1 | 01-2313-0-000 | 14 | 01-4004-0-000 | 13 |
| 01-1313-0-000 | 4 | 01-1382-0-000 | 11 | 01-2355-0-000 | 10 | 01-4011-0-000 | 5 |
| 01-1314-0-000 | 5 | 01-1384-0-000 | 16 | 01-2376-0-000 | 10 | 01-4111-0-000 | 7 |
| 01-1315-0-000 | 6 | 01-1385-0-000 | 14 | 01-2395-0-000 | 17 | 01-4011-0-000 | 10 |
| 01-1318-0-000 | 6 | 01-1390-0-000 | 8 | 01-2401-0-000 | 11 | 01-4013-0-000 | 2 |
| 01-1318-0-000 | 10 | 01-1391-0-000 | 13 | 01-2413-0-000 | 6 | 01-4017-0-000 | 2 |
| 01-1318-0-000 | 16 | 01-1394-0-000 | 8 | 01-2505-0-000 | 6 | 01-4024-0-000 | 18 |
| 01-1319-0-000 | 6 | 01-1397-0-000 | 11 | 01-2548-0-000 | 18 | 01-4029-0-000 | 8 |
| 01-1320-0-000 | 6 | 01-1557-0-000 | 11 | 01-2700-0-000 | 12 | 01-4029-0-000 | 9 |
| 01-1321-0-000 | 7 | 01-1557-0-000 | 15 | 01-2764-0-000 | 9 | 01-4035-0-000 | 7 |
| 01-1322-0-000 | 7 | 01-1585-0-000 | 2 | 01-3001-0-000 | 6 | 01-4039-0-000 | 9 |
| 01-1323-0-000 | 8 | 01-1586-0-000 | 4 | 01-3001-0-000 | 8 | 01-4059-0-000 | 6 |
| 01-1323-0-000 | 16 | 01-1800-0-000 | 2 | 01-3008-0-000 | 12 | 01-4064-0-000 | 9 |
| 01-1323-0-000 | 18 | 01-1801-0-000 | 2 | 01-3030-0-000 | 12 | 01-4065-0-000 | 5 |
| 01-1325-0-000 | 8 | 01-1802-0-000 | 3 | 01-3100-0-000 | 2 | 01-4068-0-000 | 1 |
| 01-1326-0-000 | 8 | 01-1803-0-000 | 5 | 01-3100-0-000 | 4 | 01-4100-0-000 | 9 |
| 01-1327-0-000 | 8 | 01-1804-0-000 | 6 | 01-3100-0-000 | 5 | 01-4102-0-000 | 2 |
| 01-1328-0-000 | 9 | 01-1805-0-000 | 6 | 01-3100-0-000 | 6 | 01-4103-0-000 | 2 |
| 01-1329-0-000 | 1 | 01-1806-0-000 | 6 | 01-3100-0-000 | 10 | 01-4104-0-000 | 3 |
| 01-1331-0-000 | 9 | 01-1808-0-000 | 7 | 01-3100-0-000 | 14 | 01-4105-0-000 | 3 |
| 01-1331-0-000 | 15 | 01-1809-0-000 | 7 | 01-3100-0-000 | 16 | 01-4130-0-000 | 7 |
| 01-1332-0-000 | 10 | 01-1810-0-000 | 8 | 01-3101-0-000 | 2 | 01-4132-0-001 | 12 |
| 01-1332-0-000 | 15 | 01-1812-0-000 | 9 | 01-3102-0-000 | 2 | 01-4133-0-000 | 7 |
| 01-1333-0-000 | 10 | 01-1813-0-000 | 10 | 01-3102-0-000 | 4 | 01-4133-0-000 | 13 |
| 01-1335-0-000 | 11 | 01-1814-0-000 | 12 | 01-3102-0-000 | 5 | 01-4137-0-000 | 13 |
| 01-1336-0-000 | 11 | 01-1815-0-000 | 14 | 01-3102-0-000 | 6 | 01-4572-0-000 | 9 |
| 01-1337-0-000 | 11 | 01-1816-0-000 | 15 | 01-3102-0-000 | 10 | 01-4672-0-001 | 6 |
| 01-1338-0-000 | 11 | 01-1816-0-000 | 16 | 01-3102-0-000 | 16 | 01-4672-0-004 | 8 |
| 01-1339-0-000 | 12 | 01-1818-0-000 | 7 | 01-3103-0-000 | 4 | 01-5004-0-000 | 9 |
| 01-1340-0-000 | 12 | 01-1833-0-000 | 8 | 01-3103-0-000 | 12 | 01-5020-0-000 | 6 |
| 01-1341-0-000 | 12 | 01-1900-0-000 | 7 | 01-3104-0-000 | 4 | 01-5022-0-000 | 12 |

| PART NUMBER | PAGE | PART NUMBER | PAGE | PART NUMBER | PAGE | PART NUMBER | PAGE |
|---------------|------|---------------|------|---------------|------|---------------|------|
| 01-5033-0-000 | 8 | 01-6311-0-000 | 16 | 05-1303-0-000 | 1 | 20-0254-0-900 | 8 |
| 01-5033-0-000 | 13 | 01-6312-0-000 | 16 | 05-1304-0-000 | 1 | 20-0258-1-000 | 6 |
| 01-5033-0-000 | 16 | 01-6340-0-000 | 7 | 05-1305-0-000 | 1 | 20-0266-0-000 | 6 |
| 01-5038-0-000 | 12 | 01-6375-0-000 | 6 | 05-1306-0-000 | 1 | 20-0268-0-000 | 6 |
| 01-5082-0-000 | 10 | 01-6375-0-000 | 15 | 05-1307-0-000 | 1 | 20-0271-3-000 | 7 |
| 01-5102-0-000 | 4 | 01-6406-0-000 | 6 | 05-1308-0-000 | 1 | 20-0277-1-000 | 7 |
| 01-5106-0-000 | 8 | 01-6508-0-000 | 6 | 05-1309-0-000 | 1 | 20-0278-1-000 | 7 |
| 01-5107-0-000 | 6 | 01-6534-0-000 | 18 | 05-1310-0-000 | 1 | 20-0281-0-000 | 7 |
| 01-5108-0-000 | 7 | 01-6535-0-000 | 18 | 05-1311-0-000 | 2 | 20-0288-0-000 | 7 |
| 01-5111-0-000 | 12 | 01-6555-0-000 | 6 | 05-1312-0-000 | 2 | 20-0308-1-000 | 12 |
| 01-5113-0-000 | 12 | 01-6574-0-000 | 6 | 05-1313-0-000 | 2 | 20-0316-0-000 | 12 |
| 01-5143-0-000 | 7 | 01-6831-0-003 | 6 | 05-1314-0-000 | 2 | 20-0317-0-904 | 12 |
| 01-5147-0-000 | 6 | 01-6833-0-000 | 1 | 05-1315-0-000 | 2 | 20-0318-0-001 | 12 |
| 01-5148-0-000 | 15 | 01-6833-0-000 | 1 | 05-1316-0-000 | 9 | 20-0321-0-000 | 14 |
| 01-5151-0-000 | 9 | 01-7012-0-000 | 3 | 05-1317-0-000 | 18 | 20-0566-0-000 | 10 |
| 01-5152-0-000 | 16 | 01-7013-0-000 | 2 | 05-1319-0-000 | 20 | 20-0569-0-050 | 11 |
| 01-5156-0-000 | 5 | 01-7013-0-000 | 8 | 05-1320-0-000 | 20 | 20-0570-0-050 | 11 |
| 01-5158-0-000 | 18 | 01-7017-0-000 | 9 | 05-1322-0-000 | 20 | 20-0577-0-000 | 11 |
| 01-5161-0-000 | 13 | 01-7029-0-000 | 4 | 05-1323-0-000 | 20 | 20-0583-0-001 | 10 |
| 01-5162-0-000 | 13 | 01-7100-0-000 | 1 | 05-1324-0-000 | 1 | 20-0587-0-000 | 2 |
| 01-5200-0-000 | 9 | 01-7101-0-000 | 2 | | | 20-0588-0-000 | 2 |
| 01-5202-0-000 | 10 | 01-7102-0-000 | 2 | 10-4019-0-000 | 6 | 20-0590-0-000 | 20 |
| 01-5203-0-000 | 15 | 01-7103-0-000 | 2 | | | 20-0591-0-000 | 20 |
| 01-5204-0-000 | 15 | 01-7104-0-000 | 8 | 20-0001-1-000 | 2 | 20-0606-0-000 | 10 |
| 01-5205-0-000 | 16 | 01-7105-0-000 | 15 | 20-0009-0-000 | 7 | 20-0610-0-000 | 1 |
| 01-5206-0-000 | 18 | 01-7204-0-000 | 16 | 20-0010-0-000 | 7 | 20-0623-0-000 | 15 |
| 01-5207-0-000 | 1 | 01-7205-0-000 | 16 | 20-0011-0-000 | 7 | 20-0639-2-000 | 13 |
| 01-5239-0-000 | 12 | 01-7206-0-000 | 1 | 20-0013-1-050 | 6 | 20-0641-2-000 | 13 |
| 01-5442-0-000 | 18 | 01-7425-0-000 | 18 | 20-0015-0-000 | 6 | 20-0645-0-000 | 12 |
| 01-5449-0-000 | 7 | 01-7535-0-000 | 6 | 20-0030-0-001 | 4 | 20-0655-0-039 | 13 |
| 01-5571-0-000 | 10 | 01-7536-0-000 | 6 | 20-0030-1-000 | 4 | 20-0660-0-000 | 5 |
| 01-6055-0-000 | 10 | 01-7787-0-000 | 1 | 20-0032-1-000 | 4 | 20-0687-0-000 | 18 |
| 01-6079-0-000 | 8 | 01-7788-0-000 | 1 | 20-0033-0-000 | 4 | 20-0688-0-000 | 18 |
| 01-6096-0-000 | 11 | 01-8002-0-000 | 12 | 20-0035-0-000 | 4 | 20-0689-0-000 | 18 |
| 01-6097-0-000 | 11 | 01-8012-0-000 | 15 | 20-0038-0-000 | 3 | 20-0691-1-100 | 18 |
| 01-6103-0-001 | 10 | 01-8002-0-000 | 18 | 20-0045-0-000 | 16 | 20-0696-0-000 | 18 |
| 01-6108-0-000 | 8 | 01-8005-0-000 | 4 | 20-0046-0-000 | 16 | 20-0698-0-000 | 20 |
| 01-6121-0-000 | 5 | 01-8405-0-000 | 7 | 20-0048-0-100 | 16 | 20-0703-0-000 | 16 |
| 01-6121-0-000 | 6 | | | 20-0051-1-024 | 17 | 20-0715-0-000 | 16 |
| 01-6121-0-000 | 7 | 02-0750-0-110 | 2 | 20-0072-1-000 | 15 | 20-0776-0-000 | 6 |
| 01-6122-0-000 | 7 | 02-0750-0-110 | 20 | 20-0085-2-000 | 11 | 20-0777-0-000 | 6 |
| 01-6135-0-000 | 6 | | | 20-0086-1-000 | 13 | | |
| 01-6165-0-000 | 8 | 03-0003-0-000 | 20 | 20-0093-2-004 | 13 | 23-0309-1-100 | 12 |
| 01-6186-0-000 | 7 | 03-0018-0-000 | 20 | 20-0094-1-000 | 11 | 23-1001-0-000 | 1 |
| 01-6195-0-000 | 12 | 03-0046-0-000 | 20 | 20-0098-2-100 | 11 | 23-1002-0-000 | 1 |
| 01-6200-0-000 | 1 | 03-0059-0-000 | 20 | 20-0106-1-000 | 11 | 23-1003-0-000 | 1 |
| 01-6201-0-000 | 1 | 03-0180-0-000 | 20 | 20-0107-2-000 | 11 | 23-1004-0-000 | 1 |
| 01-6202-0-000 | 4 | 03-0319-0-000 | 20 | 20-0111-0-000 | 11 | 23-1005-0-000 | 1 |
| 01-6203-0-000 | 5 | 03-0321-0-000 | 20 | 20-0112-0-000 | 11 | 23-1006-0-000 | 1 |
| 01-6204-0-000 | 9 | | | 20-0135-2-000 | 5 | 23-1007-0-000 | 1 |
| 01-6205-0-000 | 9 | 04-0538-0-000 | 18 | 20-0169-0-000 | 4 | 23-1007-0-050 | 1 |
| 01-6207-0-000 | 15 | 04-0747-2-000 | 16 | 20-0174-1-000 | 6 | 23-1008-0-050 | 2 |
| 01-6208-0-000 | 15 | 04-0760-0-000 | 16 | 20-0180-0-000 | 6 | 23-1009-0-050 | 2 |
| 01-6210-0-000 | 18 | 04-1823-0-000 | 20 | 20-0196-1-336 | 10 | 23-1010-0-050 | 2 |
| 01-6213-0-000 | 16 | | | 20-0196-1-337 | 10 | 23-1011-0-050 | 2 |
| 01-6216-0-000 | 15 | 05-0006-0-000 | 20 | 20-0208-1-324 | 10 | 23-1011-0-050 | 2 |
| 01-6218-0-000 | 12 | 05-0009-0-050 | 20 | 20-0225-1-000 | 8 | 23-1012-0-050 | 2 |
| 01-6277-0-000 | 10 | 05-0010-0-000 | 20 | 20-0230-0-000 | 8 | 23-1013-0-050 | 2 |
| 01-6303-0-000 | 7 | 05-1300-0-000 | 1 | 20-0230-2-050 | 8 | 23-1013-0-100 | 2 |
| 01-6310-0-000 | 16 | 05-1302-0-000 | 1 | 20-0240-1-000 | 6 | 23-1014-0-100 | 2 |

| PART NUMBER | PAGE | PART NUMBER | PAGE | PART NUMBER | PAGE | PART NUMBER | PAGE |
|---------------|------|---------------|------|---------------|------|-------------|------|
| 23-1015-0-000 | 2 | 23-2064-0-000 | 12 | 23-2121-0-000 | 16 | | |
| 23-1016-0-000 | 1 | 23-2065-0-000 | 12 | 23-2133-0-000 | 8 | | |
| 23-1017-0-000 | 1 | 23-2066-0-000 | 12 | 23-2133-0-050 | 8 | | |
| 23-1018-0-050 | 9 | 23-2066-0-050 | 12 | 23-2133-0-100 | 8 | | |
| 23-1021-0-000 | 12 | 23-2067-0-000 | 12 | 23-2134-0-000 | 10 | | |
| 23-1022-0-000 | 9 | 23-2067-0-050 | 12 | 23-2135-0-050 | 6 | | |
| 23-1023-0-000 | 1 | 23-2068-0-000 | 12 | 23-2311-0-000 | 20 | | |
| 23-2001-0-000 | 1 | 23-2069-0-000 | 13 | 23-2356-1-049 | 20 | | |
| 23-2002-0-050 | 1 | 23-2069-0-050 | 13 | 23-2356-1-050 | 20 | | |
| 23-2003-0-050 | 3 | 23-2070-0-000 | 13 | 23-2356-1-051 | 20 | | |
| 23-2004-1-000 | 3 | 23-2070-0-050 | 13 | 23-2356-1-052 | 20 | | |
| 23-2005-0-000 | 3 | 23-2071-0-000 | 13 | 23-2356-1-053 | 20 | | |
| 23-2006-0-000 | 4 | 23-2071-0-050 | 13 | 23-2356-1-054 | 20 | | |
| 23-2007-0-000 | 4 | 23-2073-0-000 | 14 | 23-2356-1-055 | 20 | | |
| 23-2008-0-000 | 4 | 23-2073-0-050 | 14 | 23-2356-1-056 | 20 | | |
| 23-2009-0-000 | 4 | 23-2074-0-000 | 14 | 23-2356-1-057 | 20 | | |
| 23-2010-0-050 | 4 | 23-2075-0-000 | 14 | 23-2356-1-058 | 20 | | |
| 23-2012-0-000 | 4 | 23-2077-0-000 | 14 | 23-2356-1-059 | 20 | | |
| 23-2014-0-050 | 4 | 23-2078-0-000 | 15 | 23-2356-1-060 | 20 | | |
| 23-2015-0-050 | 4 | 23-2079-0-000 | 15 | 23-3000-0-050 | 1 | | |
| 23-2017-0-000 | 5 | 23-2080-0-000 | 15 | 23-3002-0-000 | 18 | | |
| 23-2018-0-000 | 5 | 23-2081-0-000 | 15 | 23-3002-0-050 | 18 | | |
| 23-2019-0-000 | 5 | 23-2081-0-050 | 15 | 23-3006-0-000 | 18 | | |
| 23-2020-0-000 | 5 | 23-2082-0-000 | 15 | 23-3007-0-000 | 18 | | |
| 23-2021-0-000 | 5 | 23-2082-0-050 | 15 | 23-3008-0-000 | 18 | | |
| 23-2026-0-000 | 6 | 23-2083-0-000 | 15 | 23-3008-0-050 | 18 | | |
| 23-2027-0-000 | 6 | 23-2084-0-000 | 15 | 23-3009-0-000 | 19 | | |
| 23-2027-0-050 | 6 | 23-2084-0-050 | 15 | 23-3009-0-050 | 19 | | |
| 23-2028-0-000 | 6 | 23-2086-0-050 | 16 | 23-3010-0-000 | 19 | | |
| 23-2028-0-050 | 6 | 23-2088-0-000 | 16 | 23-3011-0-000 | 19 | | |
| 23-2029-0-000 | 6 | 23-2089-0-050 | 16 | 23-3012-0-000 | 18 | | |
| 23-2031-0-000 | 6 | 23-2091-0-000 | 16 | | | | |
| 23-2032-0-000 | 6 | 23-2091-0-050 | 16 | 24-2162-0-000 | 6 | | |
| 23-2033-0-000 | 7 | 23-2092-0-000 | 16 | | | | |
| 23-2034-0-000 | 7 | 23-2092-0-050 | 16 | | | | |
| 23-2036-0-000 | 7 | 23-2093-0-050 | 16 | | | | |
| 23-2036-0-050 | 7 | 23-2095-0-000 | 16 | | | | |
| 23-2037-0-000 | 7 | 23-2095-0-050 | 16 | | | | |
| 23-2037-0-050 | 7 | 23-2096-0-000 | 16 | | | | |
| 23-2039-0-000 | 8 | 23-2097-0-000 | 16 | | | | |
| 23-2040-0-000 | 8 | 23-2097-0-050 | 16 | | | | |
| 23-2042-0-000 | 8 | 23-2098-0-000 | 16 | | | | |
| 23-2043-0-000 | 8 | 23-2098-0-050 | 16 | | | | |
| 23-2044-0-050 | 9 | 23-2099-0-000 | 16 | | | | |
| 23-2045-0-000 | 9 | 23-2100-0-000 | 16 | | | | |
| 23-2046-0-000 | 9 | 23-2101-0-000 | 17 | | | | |
| 23-2047-0-000 | 9 | 23-2102-0-050 | 6 | | | | |
| 23-2048-2-000 | 9 | 23-2104-0-050 | 9 | | | | |
| 23-2049-1-000 | 9 | 23-2105-0-050 | 11 | | | | |
| 23-2050-0-000 | 9 | 23-2106-0-000 | 11 | | | | |
| 23-2051-0-100 | 9 | 23-2107-0-000 | 11 | | | | |
| 23-2052-0-000 | 9 | 23-2108-0-050 | 12 | | | | |
| 23-2053-0-000 | 10 | 23-2112-0-000 | 17 | | | | |
| 23-2054-0-050 | 10 | 23-2113-0-000 | 11 | | | | |
| 23-2055-0-000 | 10 | 23-2114-0-000 | 11 | | | | |
| 23-2057-0-050 | 10 | 23-2115-0-000 | 10 | | | | |
| 23-2058-0-050 | 10 | 23-2116-0-000 | 15 | | | | |
| 23-2059-1-050 | 10 | 23-2118-0-000 | 5 | | | | |
| 23-2061-0-000 | 11 | 23-2119-0-000 | 20 | | | | |
| 23-2062-0-000 | 11 | 23-2120-0-000 | 9 | | | | |

