



**MODEL S-4000 ISBH
Mechanical Indexer**

**FOR
ELECTRONIC BUTTON STITCHER
MACHINE**

PARTS AND SERVICE MANUAL

PART NUMBER 97.2486.9.001



LIMITED WARRANTY ON NEW AMF REECE EQUIPMENT

Warranty provisions:

A ninety (90) day limited service labor warranty to correct defects in installation, workmanship, or material without charge for labor. This portion of the warranty applies to machines sold as "installed" only.

A one (1) year limited material warranty on major component parts to replace materials with defects. Any new part believed defective must be returned freight prepaid to AMF Reece, Inc. for inspection. If, upon inspection, the part or material is determined to be defective, AMF Reece, Inc. will replace it without charge to the customer for parts or material.

Service labor warranty period shall begin on the completed installation date. Material warranty shall begin on the date the equipment is shipped from AMF Reece, Inc.

Exclusions:

Excluded from both service labor warranty and material warranty are: (1) Consumable parts which would be normally considered replaceable in day-to-day operations. These include parts such as needles, knives, loopers and spreaders. (2) Normal adjustment and routine maintenance. This is the sole responsibility of the customer. (3) Cleaning and lubrication of equipment. (4) Parts found to be altered, broken or damaged due to neglect or improper installation or application. (5) Damage caused by the use of non-Genuine AMF Reece parts. (6) Shipping or delivery charges.

There is no service labor warranty for machines sold as "uninstalled".

Equipment installed without the assistance of a certified technician (either an AMF Reece Employee, a Certified Contractor, or that of an Authorized Distributor) will have the limited material warranty only. Only the defective material will be covered. Any charges associated with the use of an AMF Reece Technician or that of a Distributor to replace the defective part will be the customer's responsibility.

NO OTHER WARRANTY, EXPRESS OR IMPLIED, AS TO DESCRIPTION, QUALITY, MERCHANTABILITY, and FITNESS FOR A PARTICULAR PURPOSE, OR ANY OTHER MATTER IS GIVEN BY SELLER OR SELLER'S AGENT IN CONNECTION HEREWITH. UNDER NO CIRCUMSTANCES SHALL SELLER OR SELLER'S AGENT BE LIABLE FOR LOSS OF PROFITS OR ANY OTHER DIRECT OR INDIRECT COSTS, EXPENSES, LOSSES OR DAMAGES ARISING OUT OF DEFECTS IN OR FAILURE OF THE EQUIPMENT OR ANY PART THEREOF.

WHAT TO DO IF THERE IS A QUESTION REGARDING WARRANTY

If a machine is purchased through an authorized AMF Reece, Inc. distributor, warranty questions should be first directed to that distributor. However, the satisfaction and goodwill of our customers are of primary concern to AMF Reece, Inc. In the event that a warranty matter is not handled to your satisfaction, please contact AMF Reece office:

AMF Reece - Cars s.r.o.
Tovární 837/9c
798 11 Prostejov
Czech Republic
e-mail: info@amfreece-cars.cz

TABLE OF CONTENTS

A - INTRODUCTION

1. INTRODUCTION	1-1
2. SPECIFICATION	1-1

B - MACHINE INSTALLATION

1. CONTENT OF THE SHIPPING BOX.....	1-2
1.1. The shipment contains one box	1-2
1.2. The package contains the following parts	1-2
2. MANUAL INDEXER INSTALLATION	1-3
2.1. Assembly of kit 24.9403.0.050	1-3
2.2. Assembly of kit 24.9401.0.050	1-5
2.3. Assembly of kit 24.9402.0.050	1-6
2.4. Assembly of kits 24.9405.0.050 and 24.9006.0.050	1-6
2.5. Assembly of kit 24.9404.0.050	1-8
2.6. Assembly of pedal kit 24.9407.0.050	1-9

C - PROPER APPLICATION

1. POWER UP / HOME POSITION (SEE S-4000 ISBH MANUAL).....	1-11
2. PROGRESS OF SEWING WITH INDEXER	1-11

D - INDEXER ADJUSTMENTS


1. SETTING THE SEWING DIRECTION OF BUTTONHOLES	1-14
1.1. Sewing from right to left.....	1-14
1.2. Sewing from left to right.....	1-15
2. ADJUST THE DISTANCE BETWEEN THE BUTTONHOLES	1-16
2.1. Change the distance between buttonholes	1-16
2.2. Change the guide	1-17

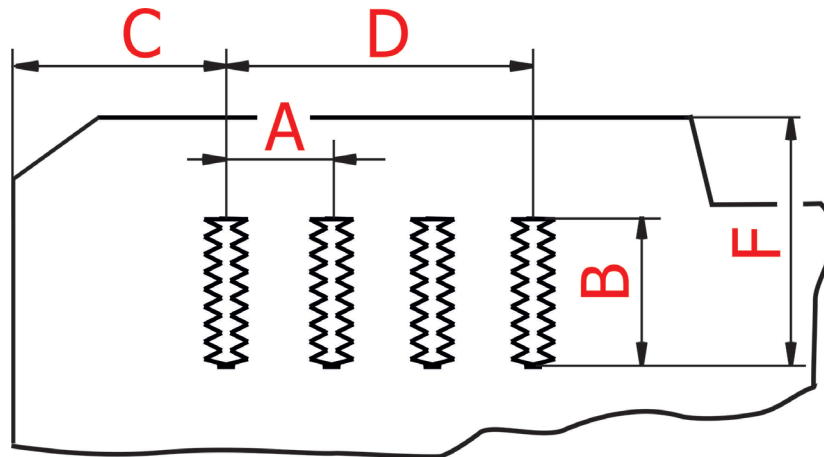
A - INTRODUCTION

1. INTRODUCTION

The mechanical indexer was developed based on customer requirements and is designed for sewing imitation buttonholes on the sleeves of jackets. The indexer is intended only for sewing straight buttonholes. This device is intended for customers of piece and small series production. The device is compatible with the S-4000 ISBH machine from AMF REECE.

2. SPECIFICATION

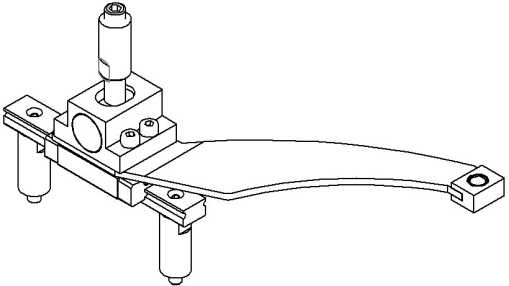
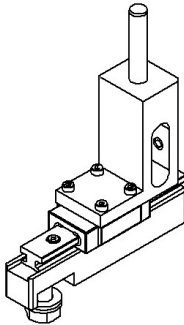
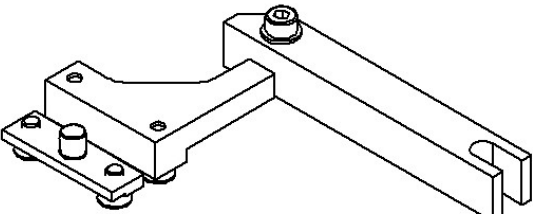
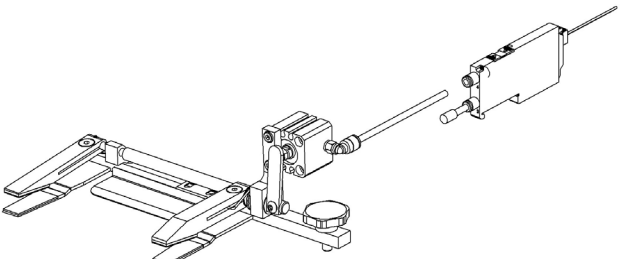
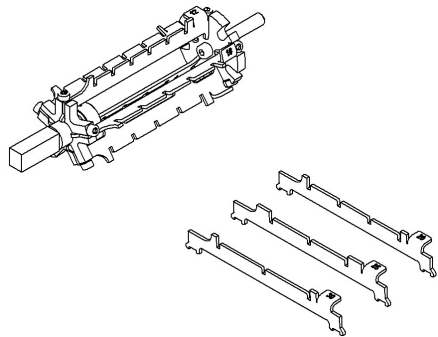
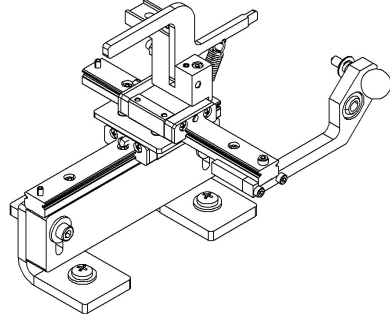
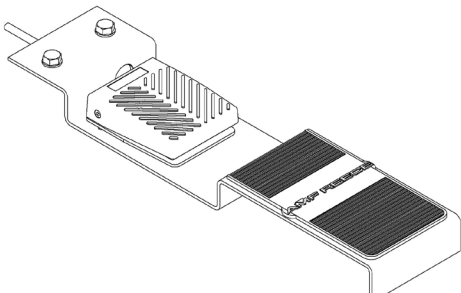
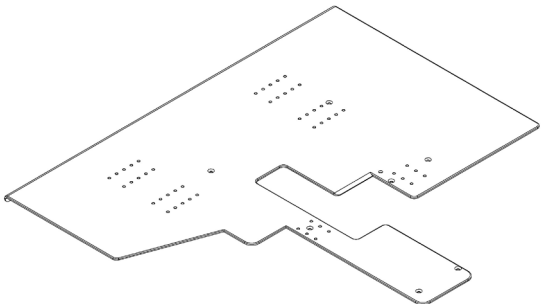
Type of Buttonhole	No. of Buttonholes	Distance between Buttonholes (A)	Length of Buttonholes (B)	Min. Distance from Edge (C)	Max. Range (D)	Max. Distance from Edge (F)
Straight buttonhole 	1 - 6	12 mm	15,8 – 25 mm	40 mm	60 mm	Up to 67 mm
	1 - 6	13 mm			65 mm	
	1 - 5	14 mm			56 mm	
	1 - 5	15 mm			60 mm	
	1 - 5	16 mm			64 mm	
	1 - 4	20 mm			60 mm	
	1 - 3	25 mm			50 mm	
	1 - 3	30 mm			60 mm	



B - MACHINE INSTALLATION

1. CONTENT OF THE SHIPPING BOX

- 1.1. The shipment contains one box
- 1.2. The package contains the following parts

24.9401.0.050 – Indexer linear guide assy.	24.9402.0.050 – Connecting parts – cross lever assy.
	
24.9403.0.050 – Connecting parts – indexer clamp. assy.	24.9404.0.050 – Indexer clamping assy.
	
24.9405.0.050 – Indexer range mechanism assy.	24.9406.0.050 – Indexer base assy.
	
24.9407.0.050 – Mechanical indexer pedal assy.	24.3055.2.000 – Cover plate
	

B - MACHINE INSTALLATION

CAUTION: If the machine or crate was damaged in shipment inform the freight company immediately. Check the contents of the crate immediately and report any damage or missing items to the manufacturer immediately, late reports will not be considered.

2. MANUAL INDEXER INSTALLATION

WARNING!

Before performing this adjustment, switch the main machine power off to prevent accidental starting of the machine. Disconnect the air supply and dissipate any stored energy.

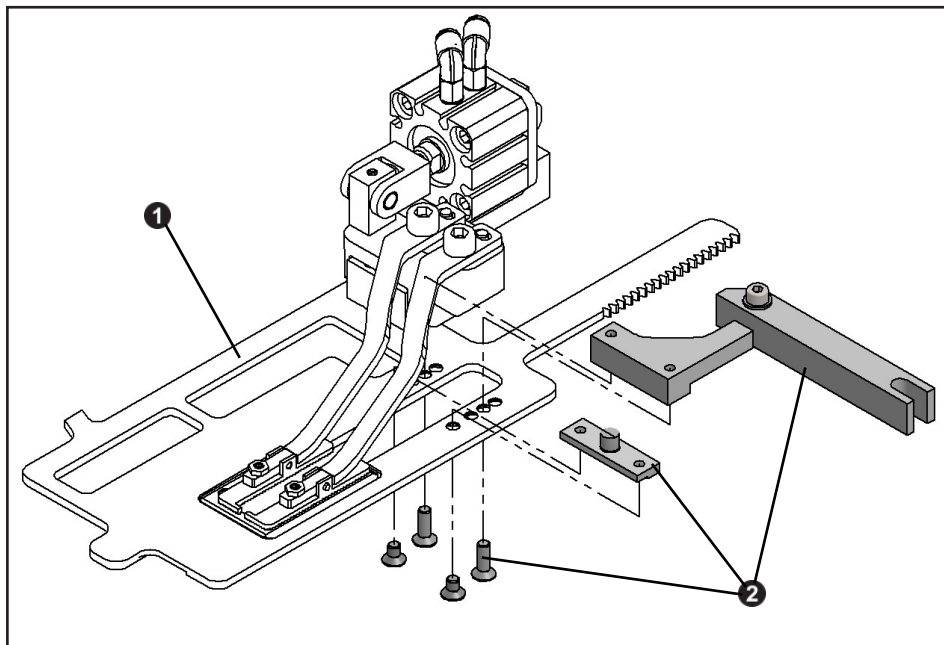
The manual indexer is designed exclusively for the AMF REECE S-4000 ISBH machine !!!

If the device is mounted on another machine, AMF REECE we do not take any responsibility for its function and it is not possible to complain about anything !!!

2.1. Assembly of kit 24.9403.0.050

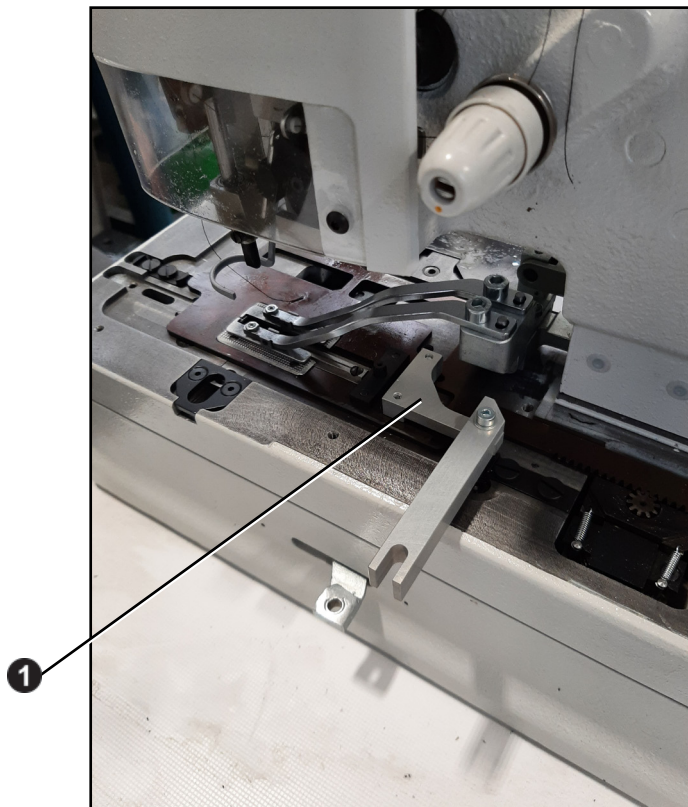
First remove the cover plate screws on the S4000 ISBH and remove the original cover plate from the machine.

Remove the machine clamping plate assembly **1**. Install the 24.9403.0.050 parts kit **2** to this assembly as shown.

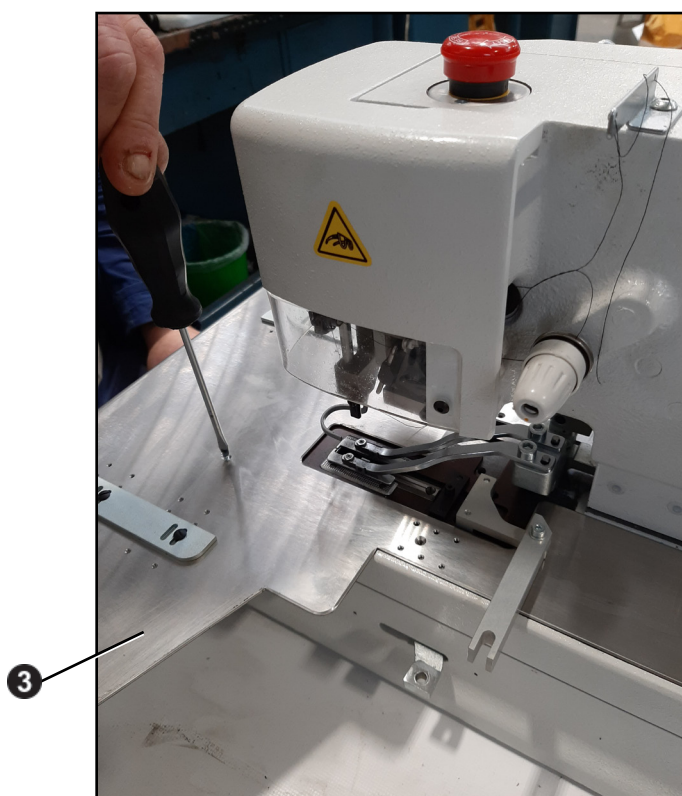


B - MACHINE INSTALLATION

Insert clamping plate mechanism **1** to S4000 ISBH sewing head.



Use the new cover plate 24.3055.2.000 **3**, which is part of the package, to cover the mechanism. Secure the cover plate with the original screws.

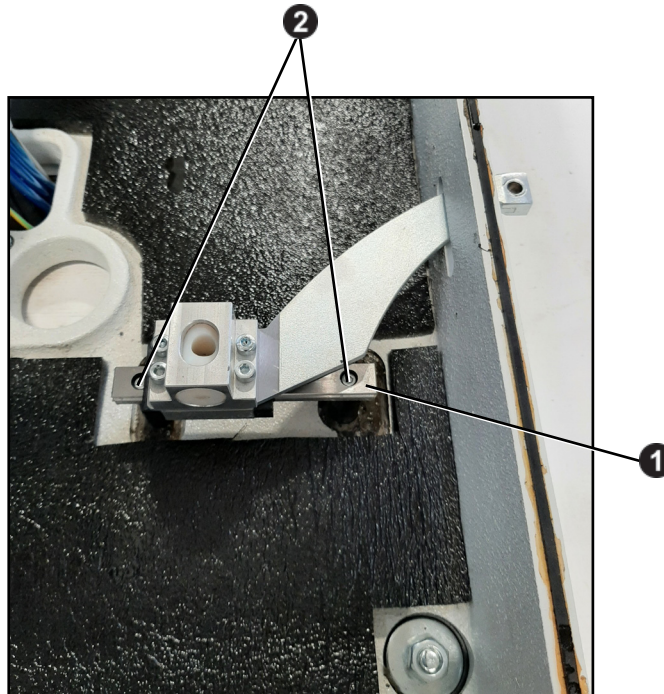


B - MACHINE INSTALLATION

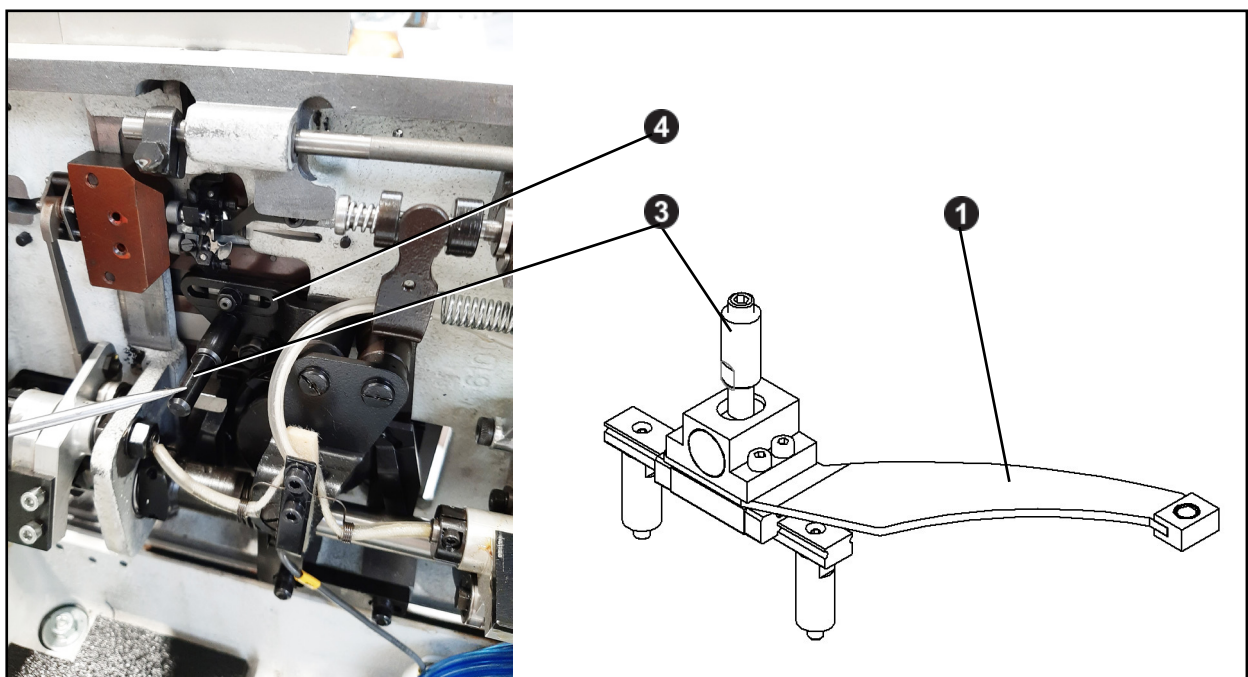
2.2. Assembly of kit 24.9401.0.050

Open the sewing head.

Attach the 24.9401.0.050 assembly **1** to the machine base with screws **2**.



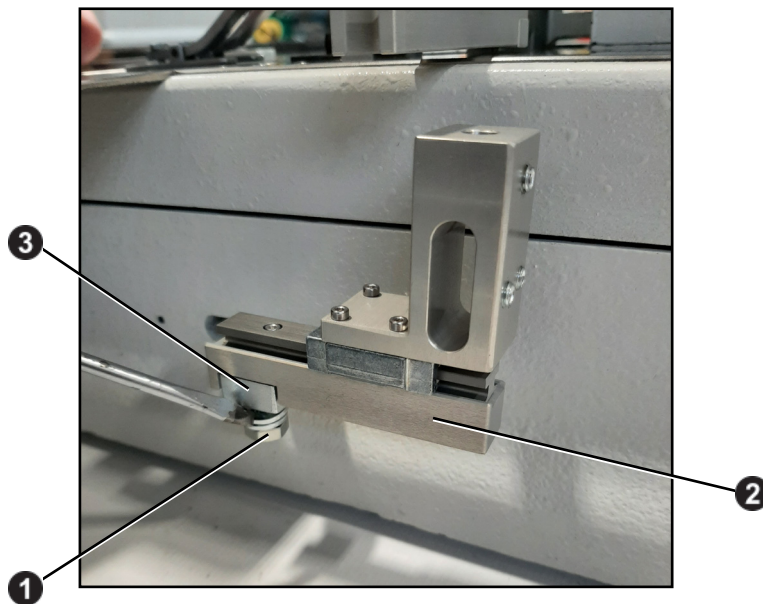
Screw the stud 24.4028.1.000 **3** into the main cam lever **4**. Lower the sewing head to the working position. The stud must fit into the hole in the assembly housing 24.9401.0.050 **1**.



B - MACHINE INSTALLATION

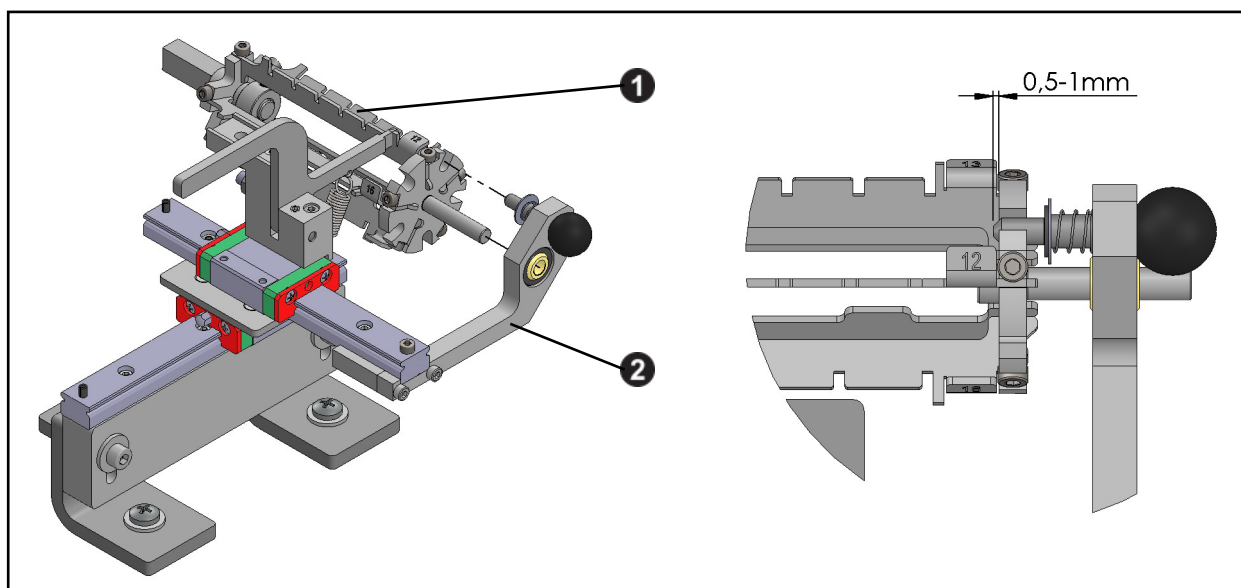
2.3. Assembly of kit 24.9402.0.050

Loosen the M6x16 screw **1** in the 24.9402.0.050 assembly **2**. Connect the assembly to the 24.9401.0.050 assembly **3** and secure it again with an M6x16 screw **1**.



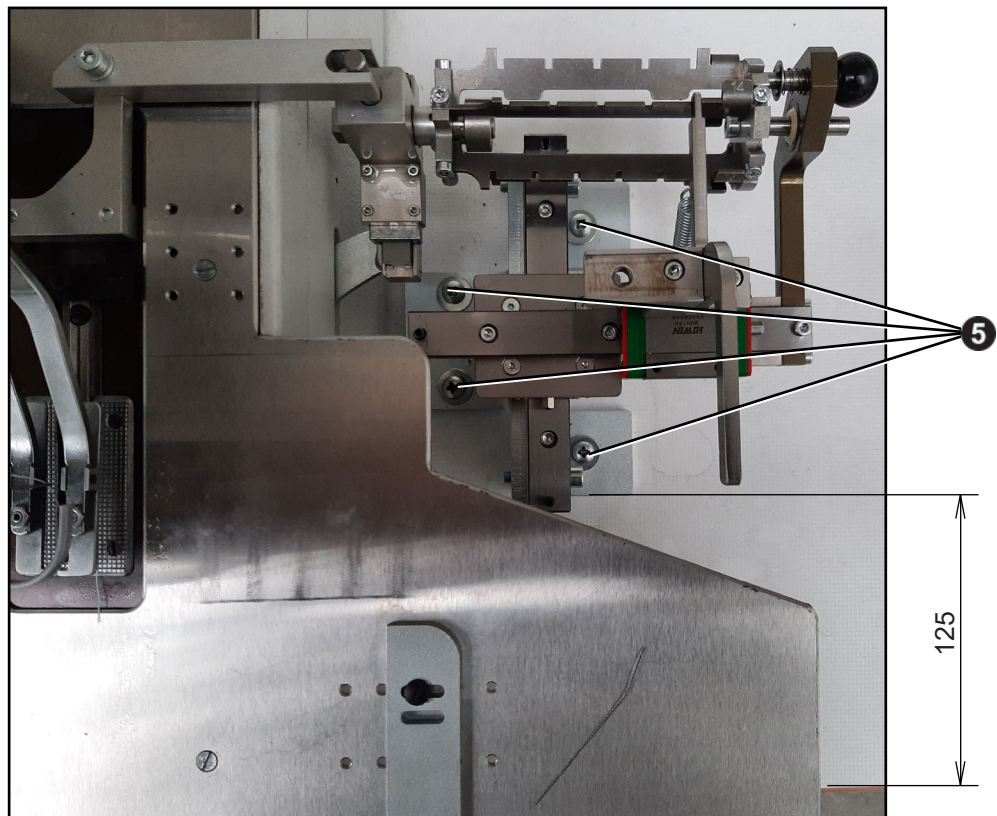
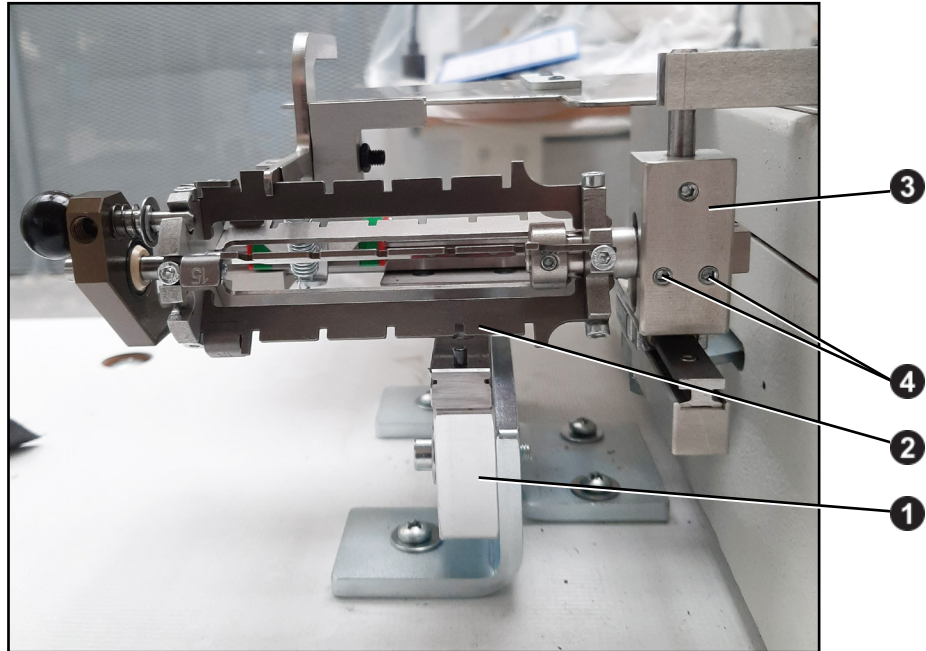
2.4. Assembly of kits 24.9405.0.050 and 24.9006.0.050

First, join assemblies 24.9405.0.050 **1** and 24.9006.0.050 **2**.



B - MACHINE INSTALLATION

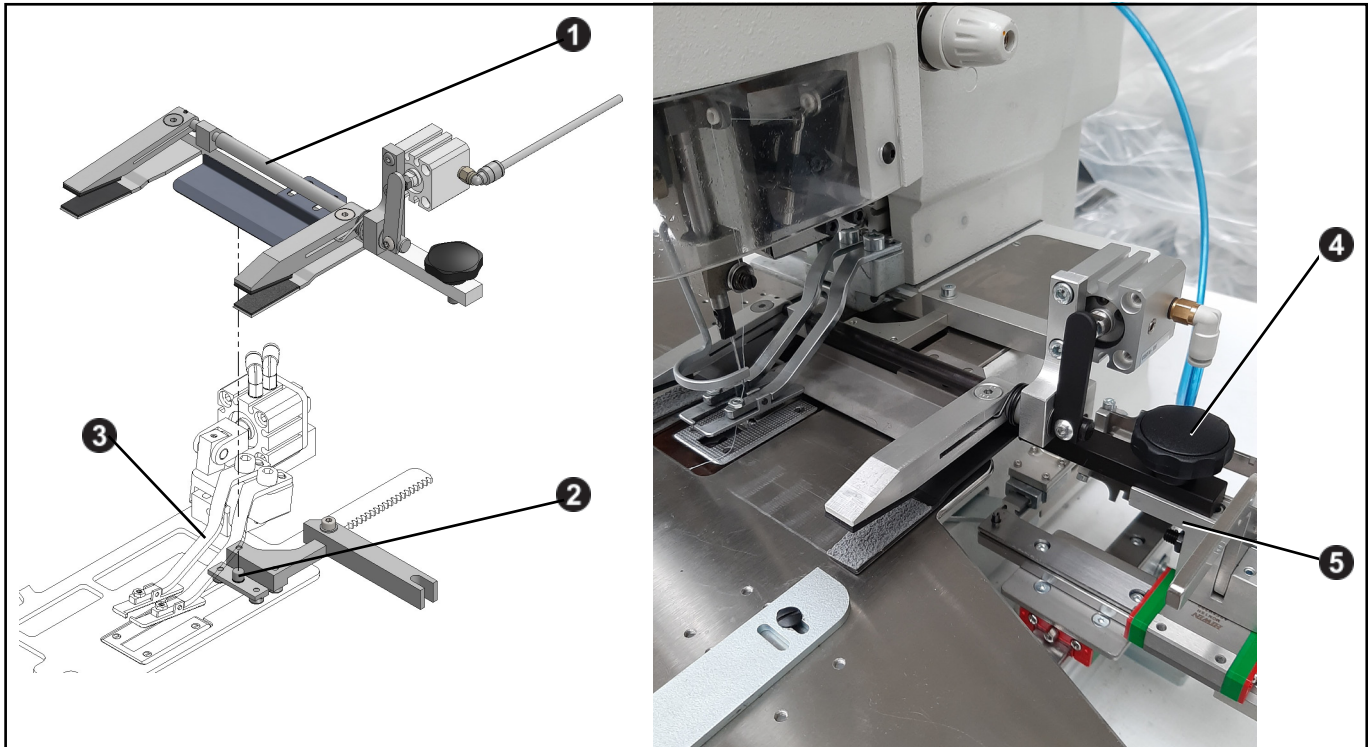
Connect the compound assemblies **1** + **2** to the 24.9402.0.050 **3** assembly. Secure the position by tightening the set screws **4**. Align the entire assembly longitudinally and vertically (125 mm and 0.5-1 mm dimensions) with the sewing head and secure the position of the wood screws **5**.



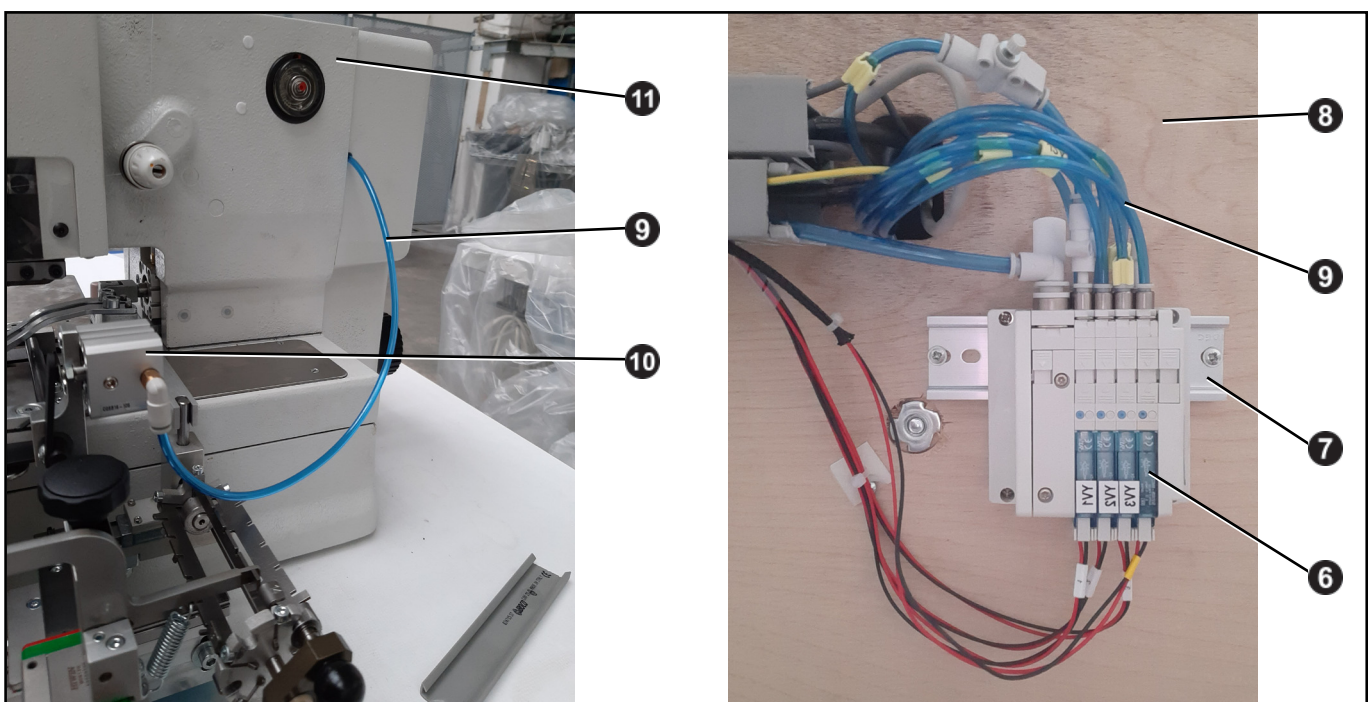
B - MACHINE INSTALLATION

2.5. Assembly of kit 24.9404.0.050

Insert the 24.9404.0.050 assembly **1** on the guide pin **2** under the sewing head clamping foot **3**. Secure the assembly **1** by tightening the screw **4** into the assembly 24.9406.0.050 **5**.

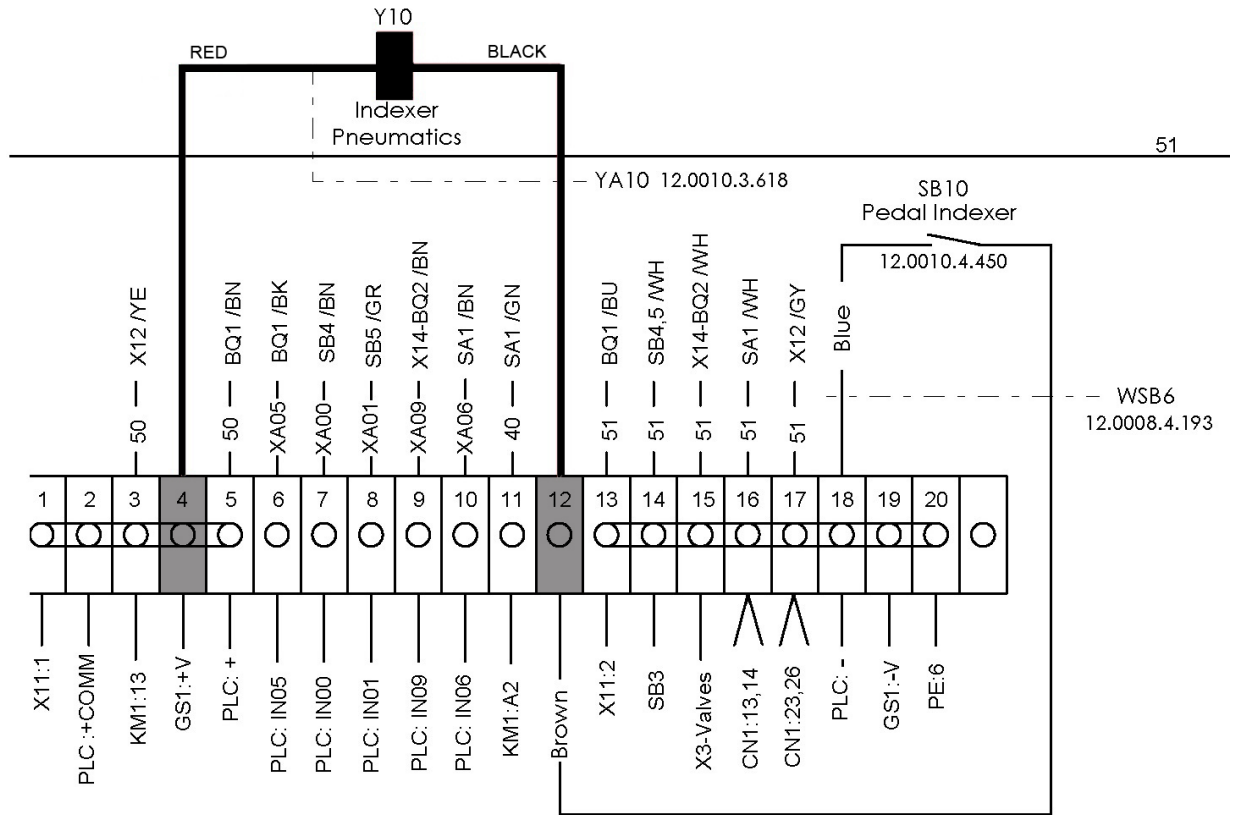


Insert the new valve **6** into the valve assembly **7**, which is located under the wooden table **8**. Connect the valve **6** with a blue tube **9** to the pneumatic cylinder **10**. Thread the blue tube **9** through the sewing head **11**.



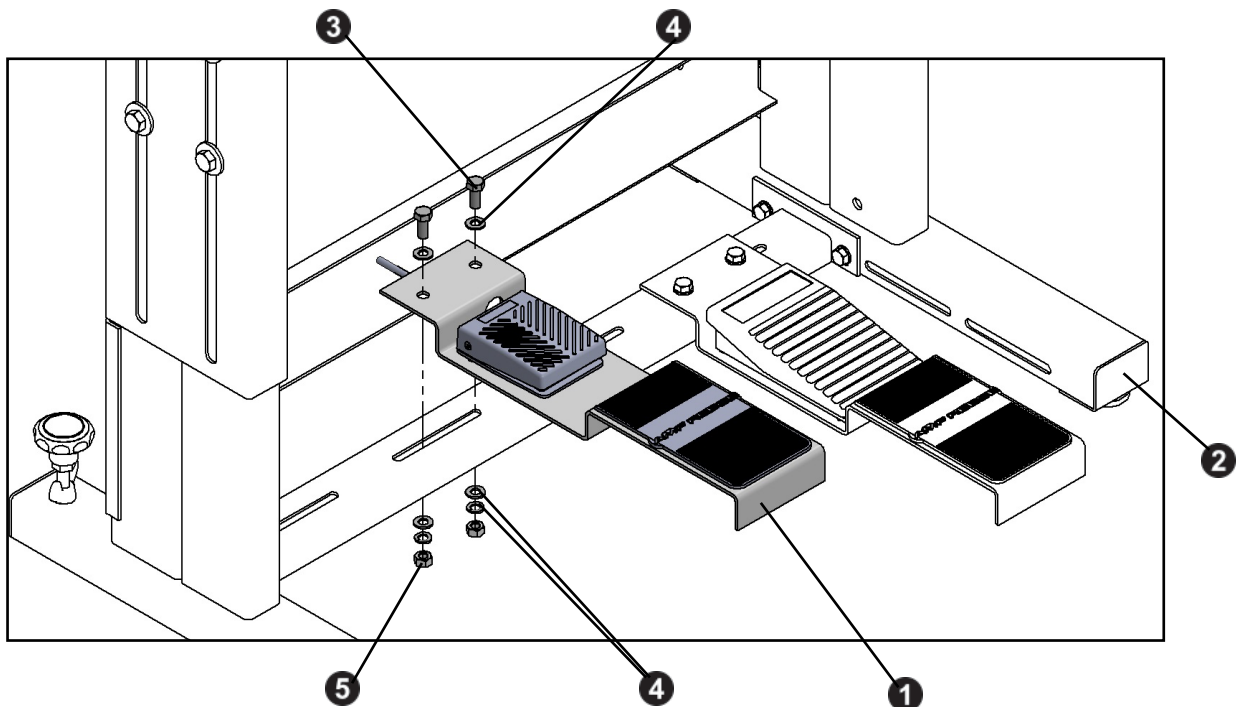
B - MACHINE INSTALLATION

Connect the valve power cable **Y10** to the valve connector. Guide it in the cable tray and pass it through the rubber bushing into the electrical box. Connect the red wire to the clamp of contactor **KM-1 13**, terminal block **4**. Connect the black wire to the clamp of terminal block **12**, according the drawing (thicker line).



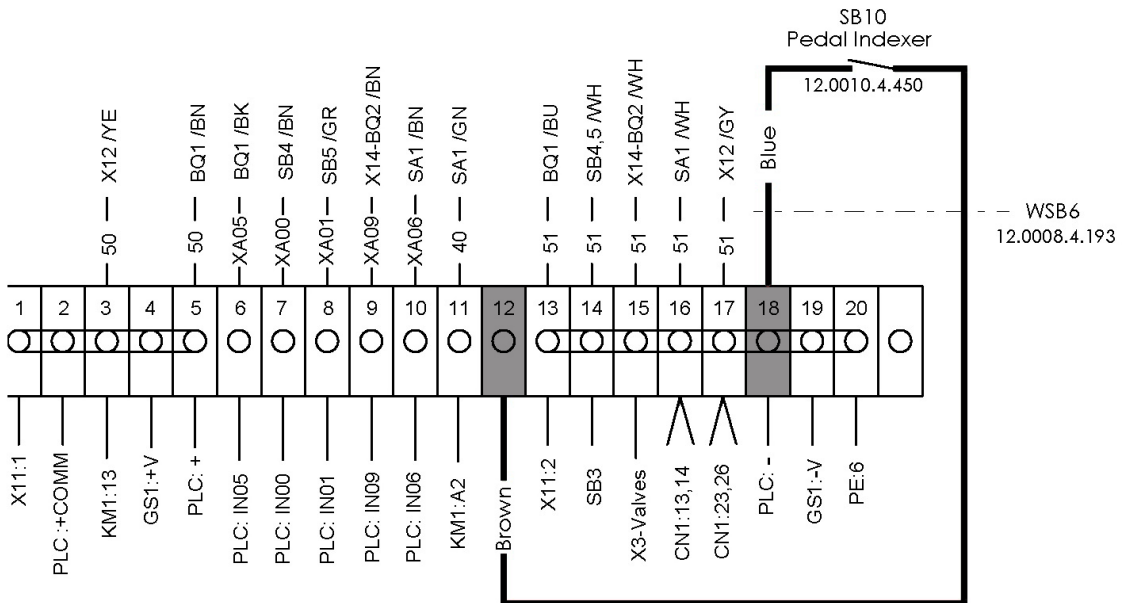
2.6. Assembly of pedal kit 24.9407.0.050

Insert the 24.9407.0.050 assembly **1** on the stand **2**. Secure the assembly **1** by tightening the fasteners (screws **3**, washers **4** and nuts **5**) to the stand **2**.



B - MACHINE INSTALLATION

Guide the pedal cable on the stand **2** and secure it with the clips **6**. Thread it into the cable tray and pass it through the bushing into the electrical box. Connect the blue wire to the clamp of terminal block **18**. Connect the brown wire to the clamp of terminal block **12**, according the drawing (thicker line).



C - PROPER APPLICATION

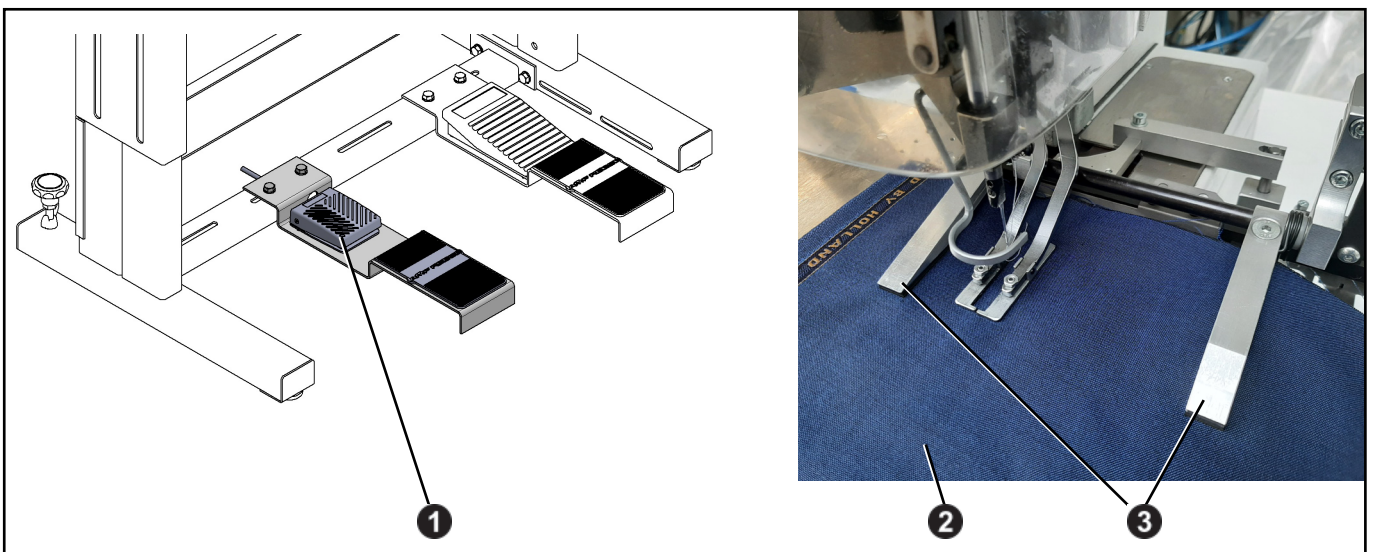
1. POWER UP / HOME POSITION (SEE S-4000 ISBH MANUAL)

1. Turn the main power switch on by turning clockwise to the I position.
2. The machine is ready for operation when the control panel display lights, the **Ready** message appears on the display and the green LED lights on display **Ready**.
The machine must be in the home position before starting to sew (to be certain, press the foot pedal and sew one dummy buttonhole).
3. It is possible to instal power voltage control (Voltage monitoring relay HRN 35) in to the machine control system. This power voltage control cautions a machine operator if the supply voltage is not in the required range (185V - 255V) and the machine could be damaged - see section E19 of the S-4000 ISBH manual.

Note: The power voltage guard is installed in the machine only if a customer has ordered it with a machine.

2. PROGRESS OF SEWING WITH INDEXER

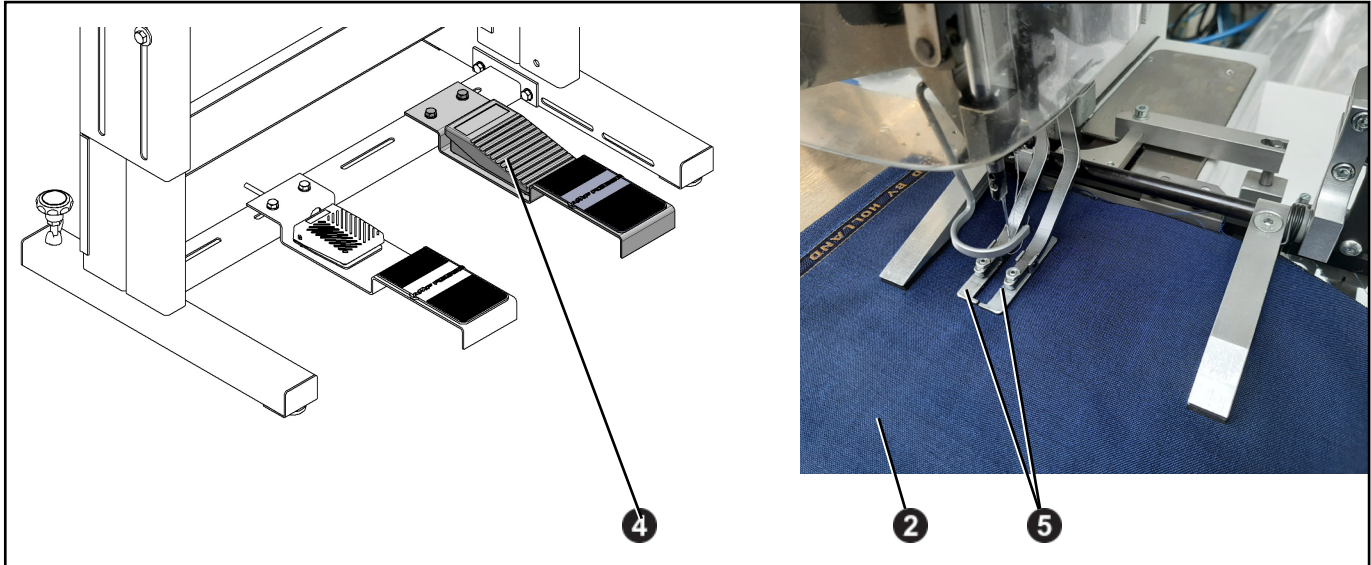
1. Bring the machine to the home position according to the section C1, see S-4000 ISBH manual.
2. Be certain that the machine is threaded correctly according to the section C3 and insert the work under the clamp feet, see S-4000 ISBH manual.
3. Adjust the sewing length of the buttonhole, see section E11 of the S-4000 ISBH manual.
4. Set the distance between the buttonholes on the indexer and select the side from which to sew, see section D1, D2.
5. Set the correct material position. Press the left pedal **1** to clamp the material **2** by indexer clamp feet **3**. Pressing the pedal **1** again will open the indexer clamp feet **3**.



C - PROPER APPLICATION

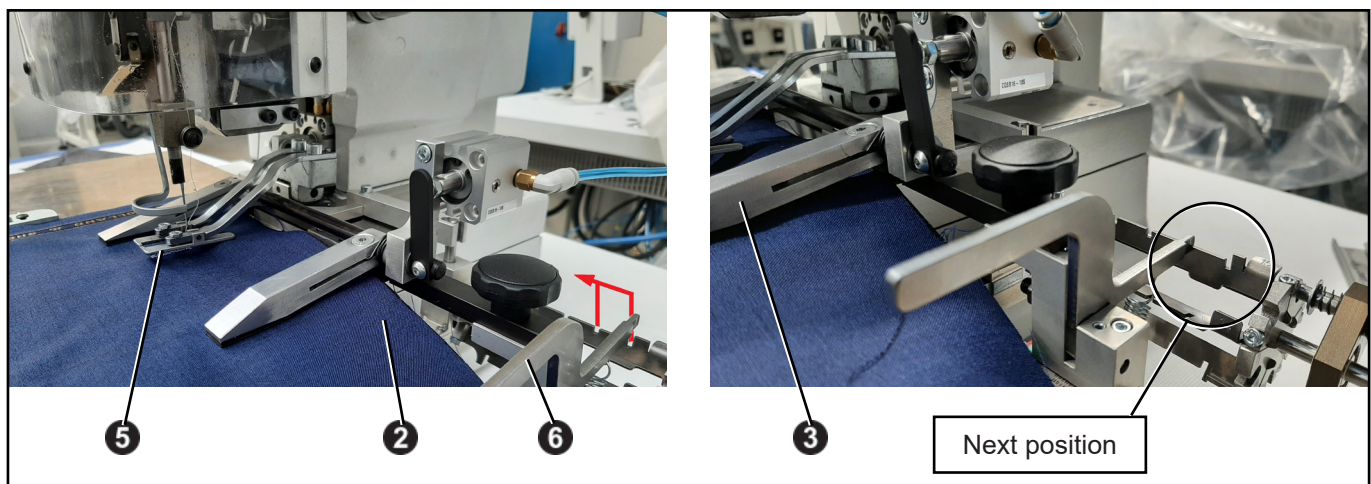
6. When the right foot pedal **4** is pressed to the first position, the material **2** is clamped by the head clamp feet **5**. Releasing the foot pedal **4** will rise the clamp feet **5**.

Note: It is possible to set in the program the machine start on first pedal **4** position. See section D3 in S4000 ISBH manual.



7. When the right foot pedal **4** is pressed to its second position, the sewing is started. After finishing the sewing and trimming the thread, the machine returns to the home position and the head clamp feet **5** rise.

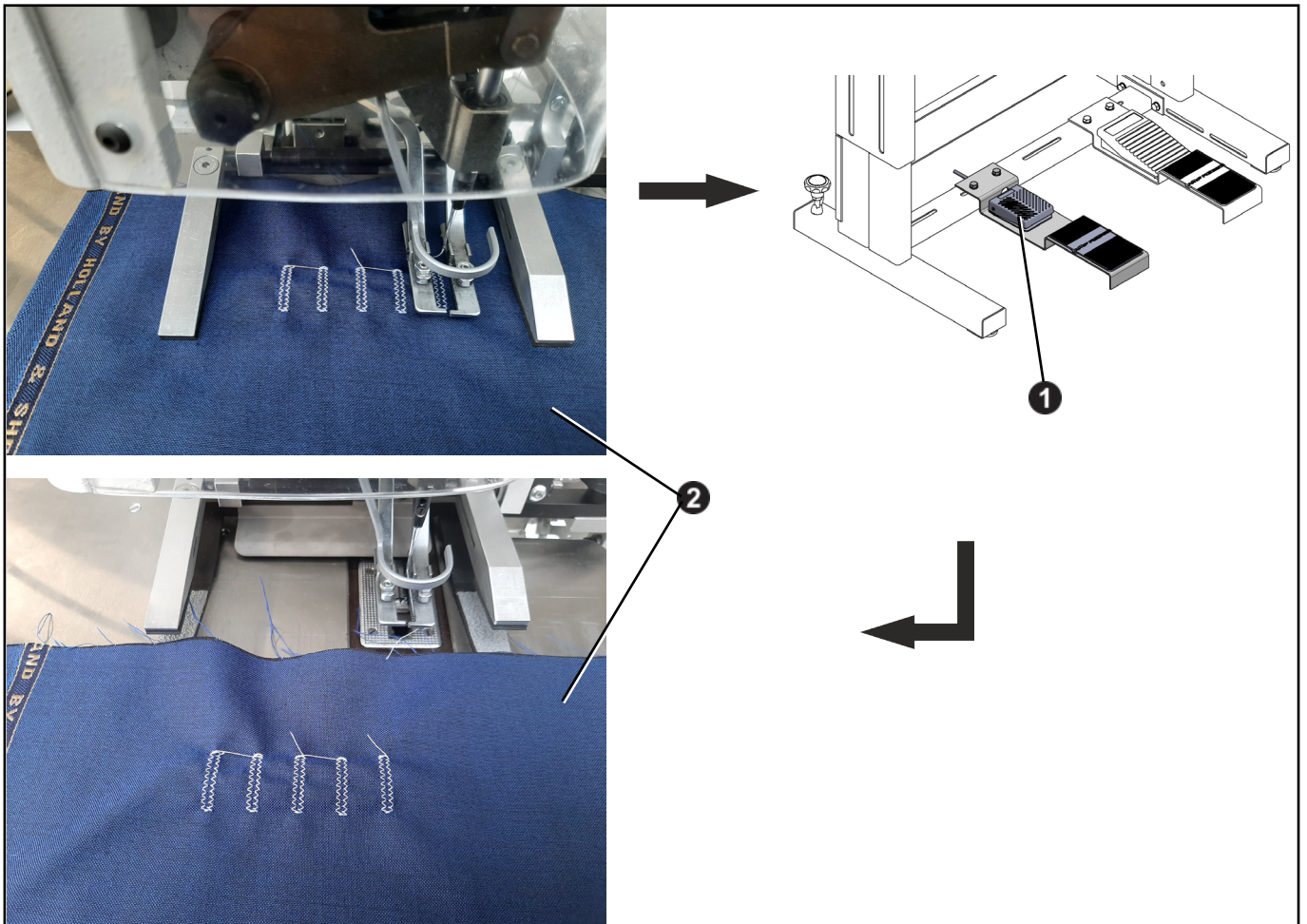
8. When the head clamp feet **5** are up, it is possible to move the sewn material **2** for next sewing. Press the lever **6** on the indexer mechanism and move the indexer feet **3** to the next position.



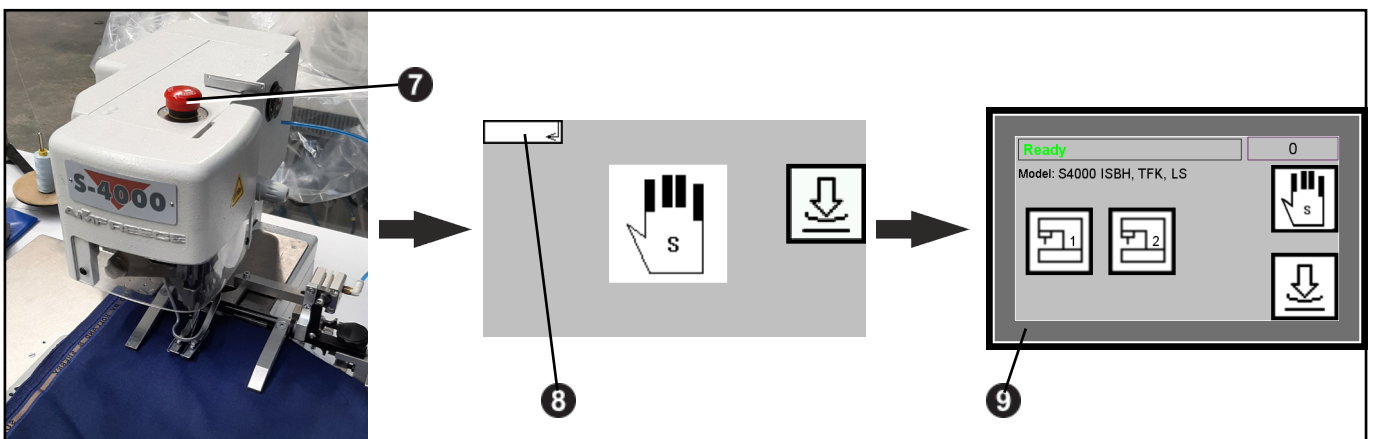
C - PROPER APPLICATION

9. To sew other buttonholes, repeat the procedure according to points **6**, **7**, **8**.

10. After sewing the last buttonhole, press the left pedal **1** and remove the sewn material **2**.



11. Machine can be stopped, for example for thread break, in any place of the cycle by pressing the Emergency Stop button **7** which is placed on the machine head. After releasing the Emergency Stop button **7**, pressing the button **8** on the display **9**, wait for the message **READY**, press the right foot pedal **4**, the machine finishes the sewing.



12. If the right foot pedal is pressed before finishing the sewing, the clamp feet will not rise and the machine will sew two instead one - this is possible to set in program. See section D3 in S-4000 ISBH manual.

13. When the work is done, switch the machine off by the button.

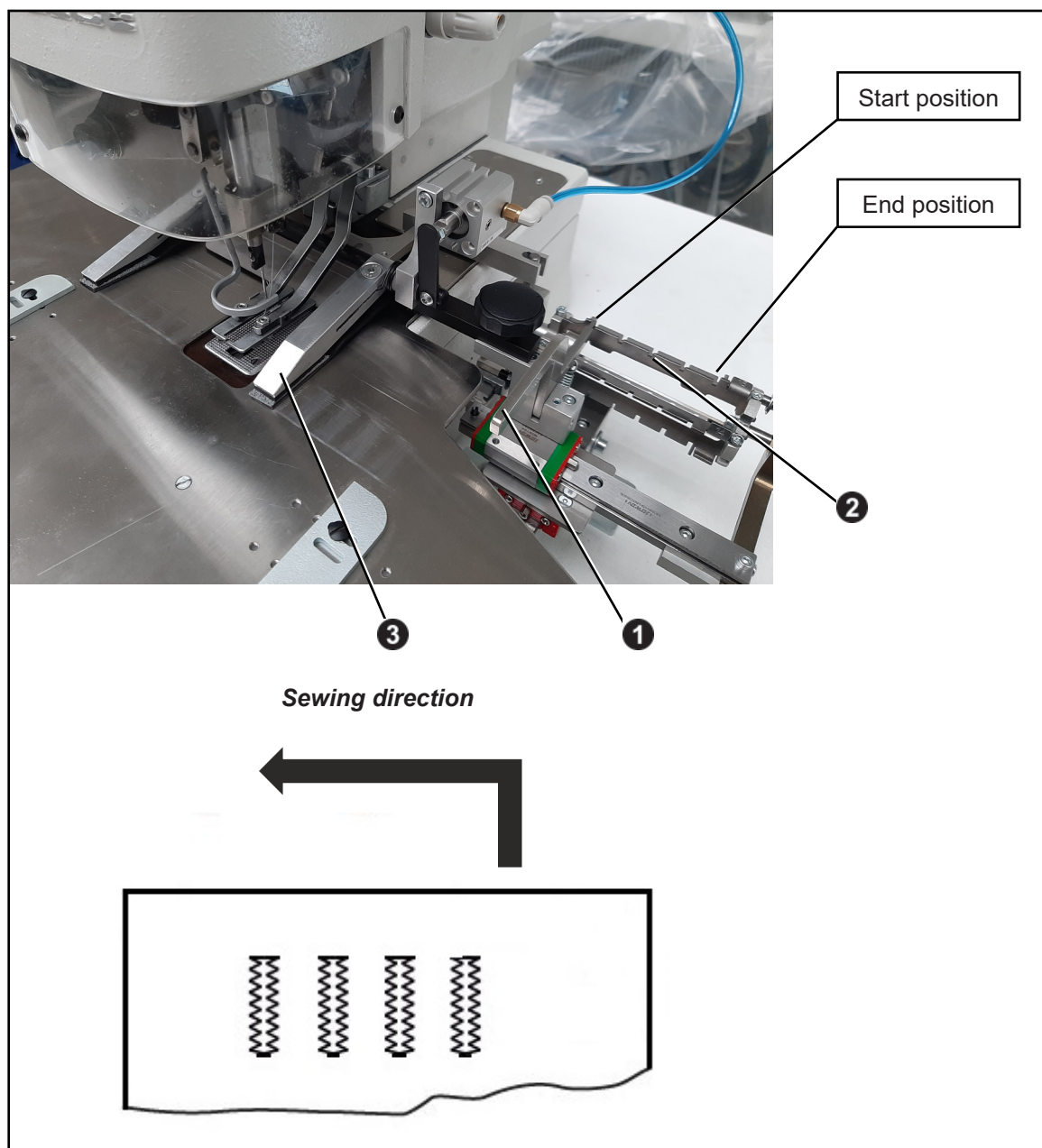
D - INDEXER ADJUSTMENTS

1. SETTING THE SEWING DIRECTION OF BUTTONHOLES

Before you start sewing, it is important to set the right sewing direction depending on whether you are sewing the right or left sleeve.

1.1. Sewing from right to left

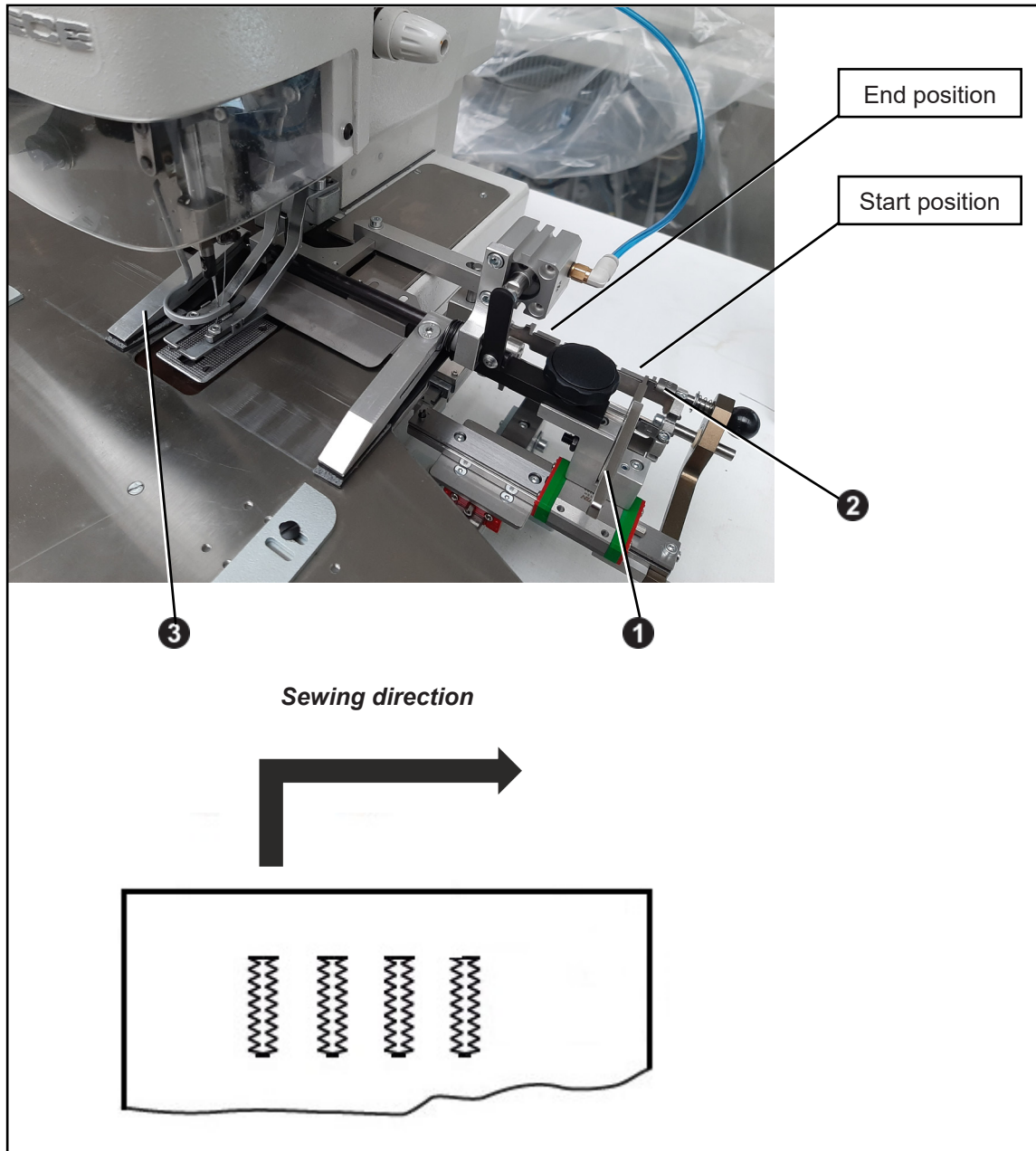
Set the lever **1** to the far left position on the gauge **2**. Indexer clamp feet **3** will move from left to right. The buttonholes will be sewn in a direction from right to left.



D - INDEXER ADJUSTMENTS

1.2. Sewing from left to right

Set the lever **1** to the far right position on the gauge **2**. Indexer clamp feet **3** will move from right to left. The buttonholes will be sewn in a direction from left to right.



D - INDEXER ADJUSTMENTS

2. ADJUST THE DISTANCE BETWEEN THE BUTTONHOLES

Several buttonhole spacing sizes can be set on the indexer. We supply the following guides with distance as standard: 12 mm, 13 mm, 14 mm, 15 mm, 16 mm, 20 mm, 25 mm and 30 mm.

See the main specification in Section A2.

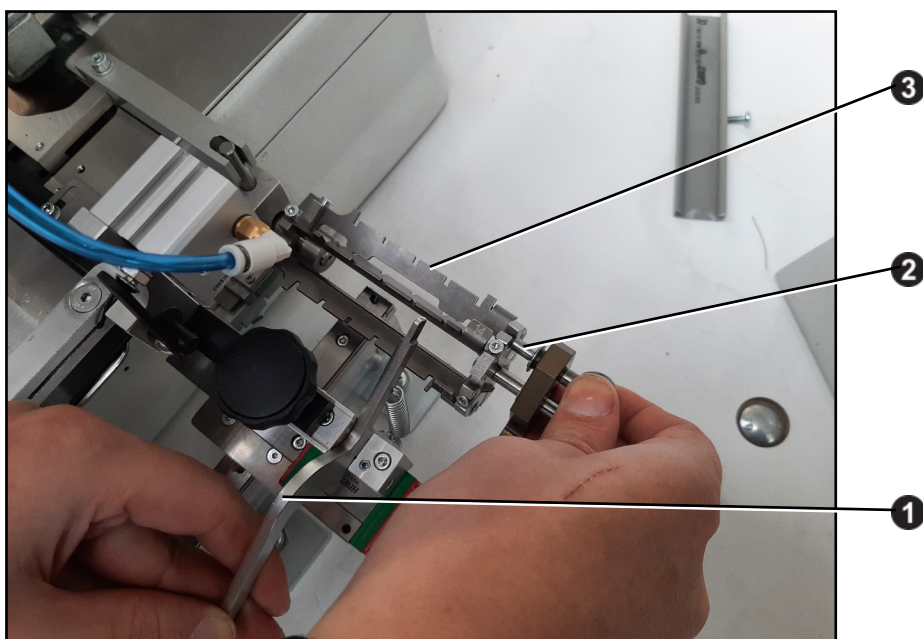
As standard, guides with distance 12-16 mm are mounted on the machine.

Guides with distances 20 mm, 25 mm and 30 mm are supplied with the machine as standard accessories.

2.1. Change the distance between buttonholes

To change the distance between buttonholes, press the lever **1** while pulling out the locking pin **2**. Turn the range mechanism **3** clockwise or counterclockwise to set the desired distance between the buttonholes.

After selecting the required distance, secure the position of the range mechanism by releasing the pin **2** back into the groove to the range mechanism. Release the lever **1** so that it engages in the end position of the guide **3** slot.



D - INDEXER ADJUSTMENTS

2.2. Change the guide

If you need to replace the guide with the sizes supplied in the accessories, follow the steps below.

Loosen the screws **4** on the gauge **5** you are replacing. Remove the guide **5** and insert a new one. Secure the screws **4** again.

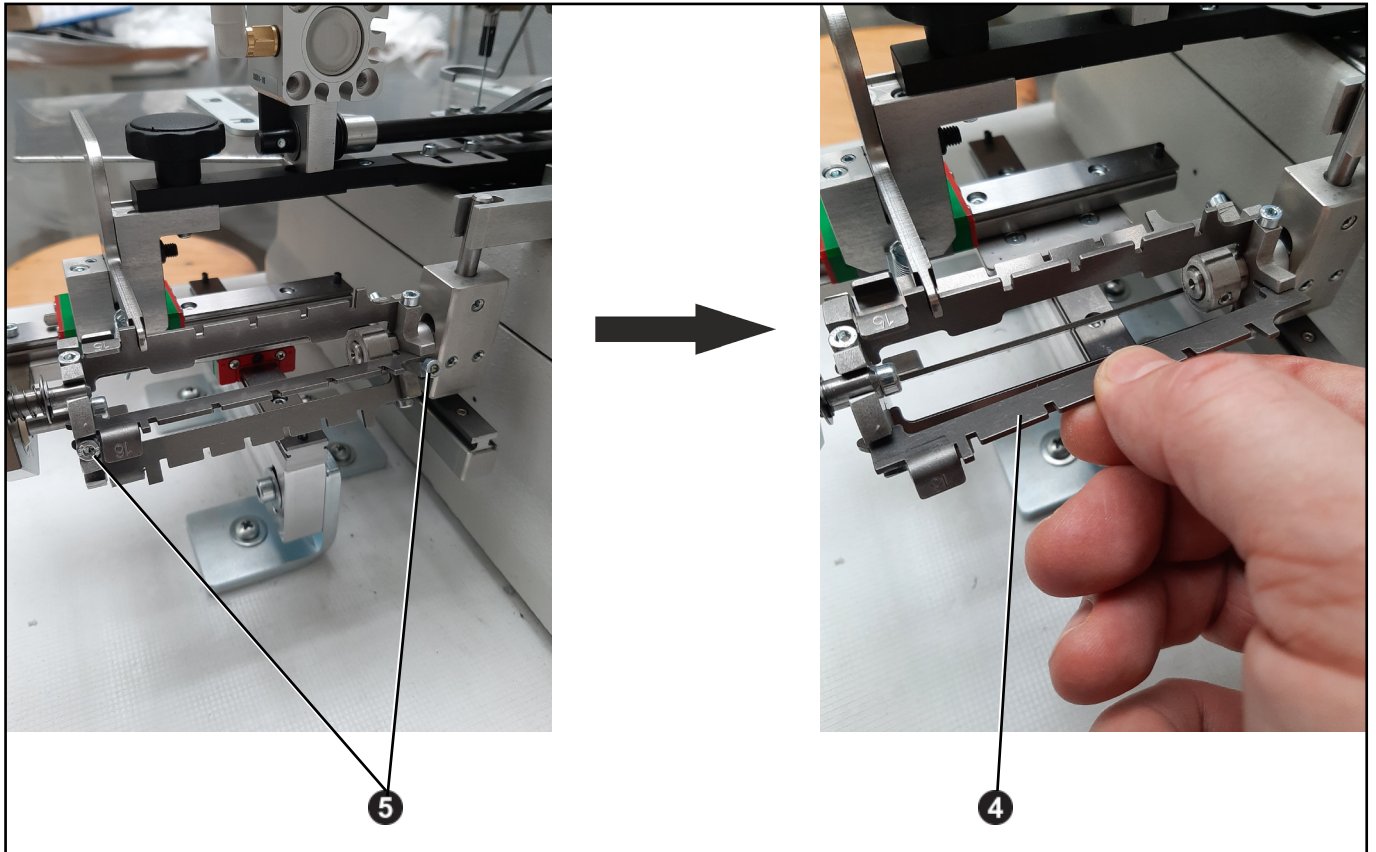
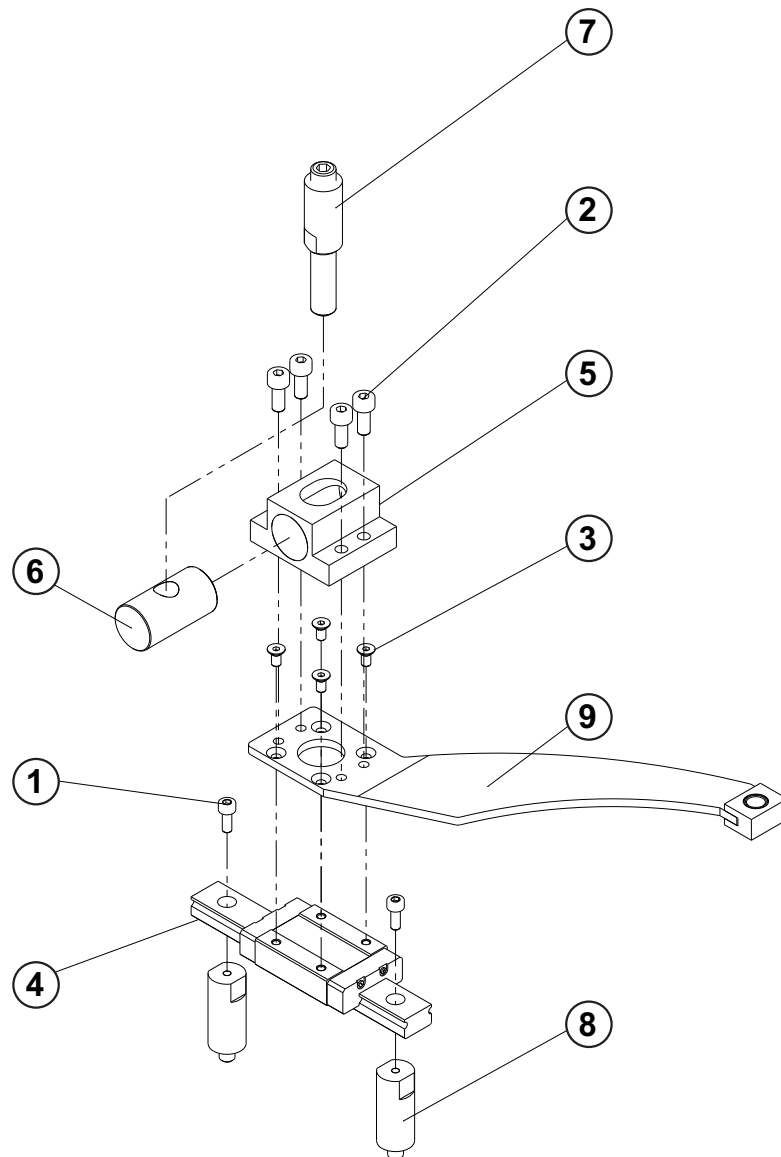


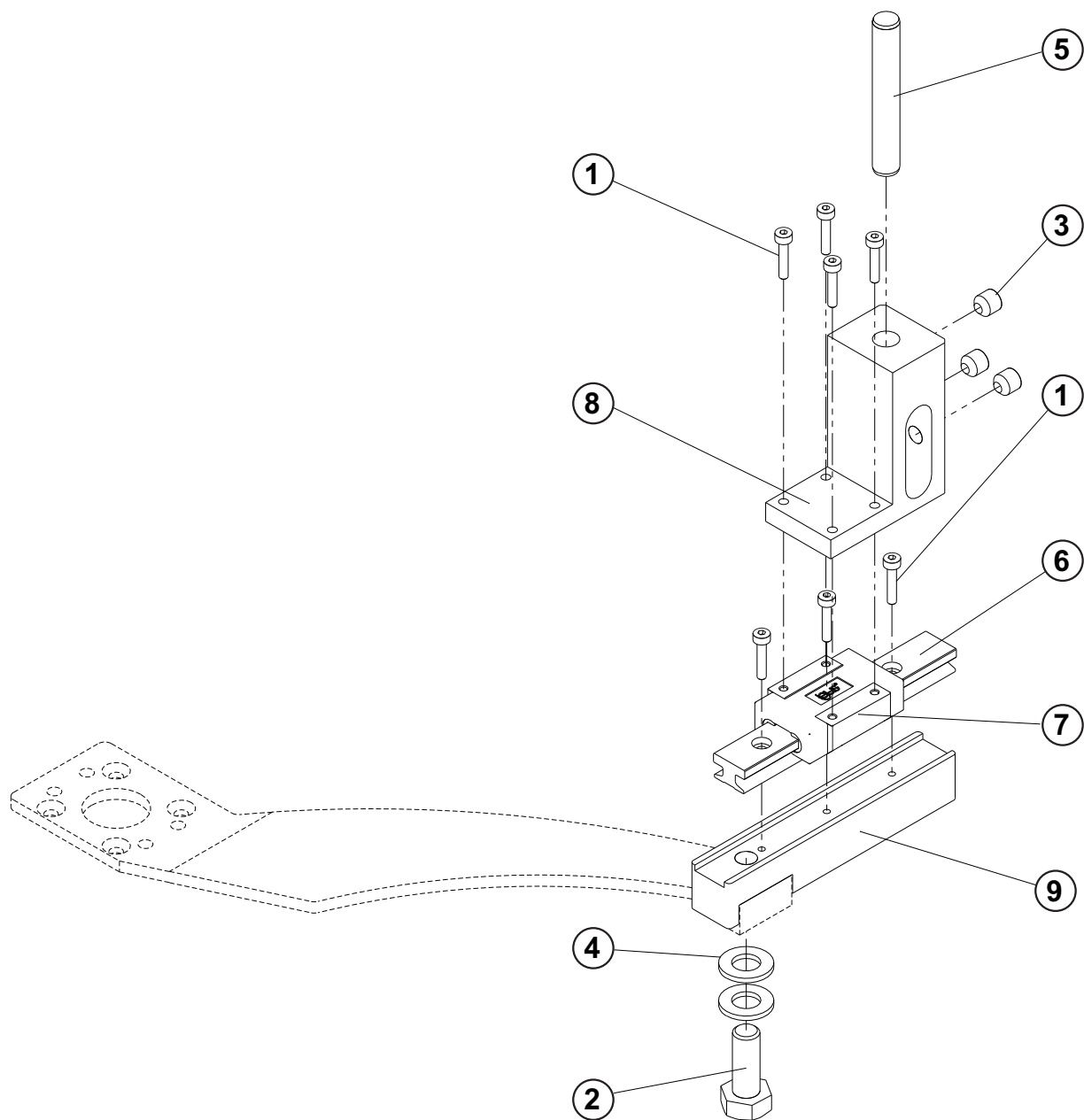
TABLE OF CONTENTS

MECHANICAL INDEXER - LINEAR GUIDE	3-2
MECHANICAL INDEXER - CROSS LEVER ASSEMBLY.....	3-4
MECHANICAL INDEXER - CLAMPING CONNECTING PARTS	3-6
MECHANICAL INDEXER - CLAMPING ASSEMBLY.....	3-8
MECHANICAL INDEXER - BASE	3-10
MECHANICAL INDEXER - RANGE MECHANISM	3-12
MECHANICAL INDEXER PEDAL.....	3-14

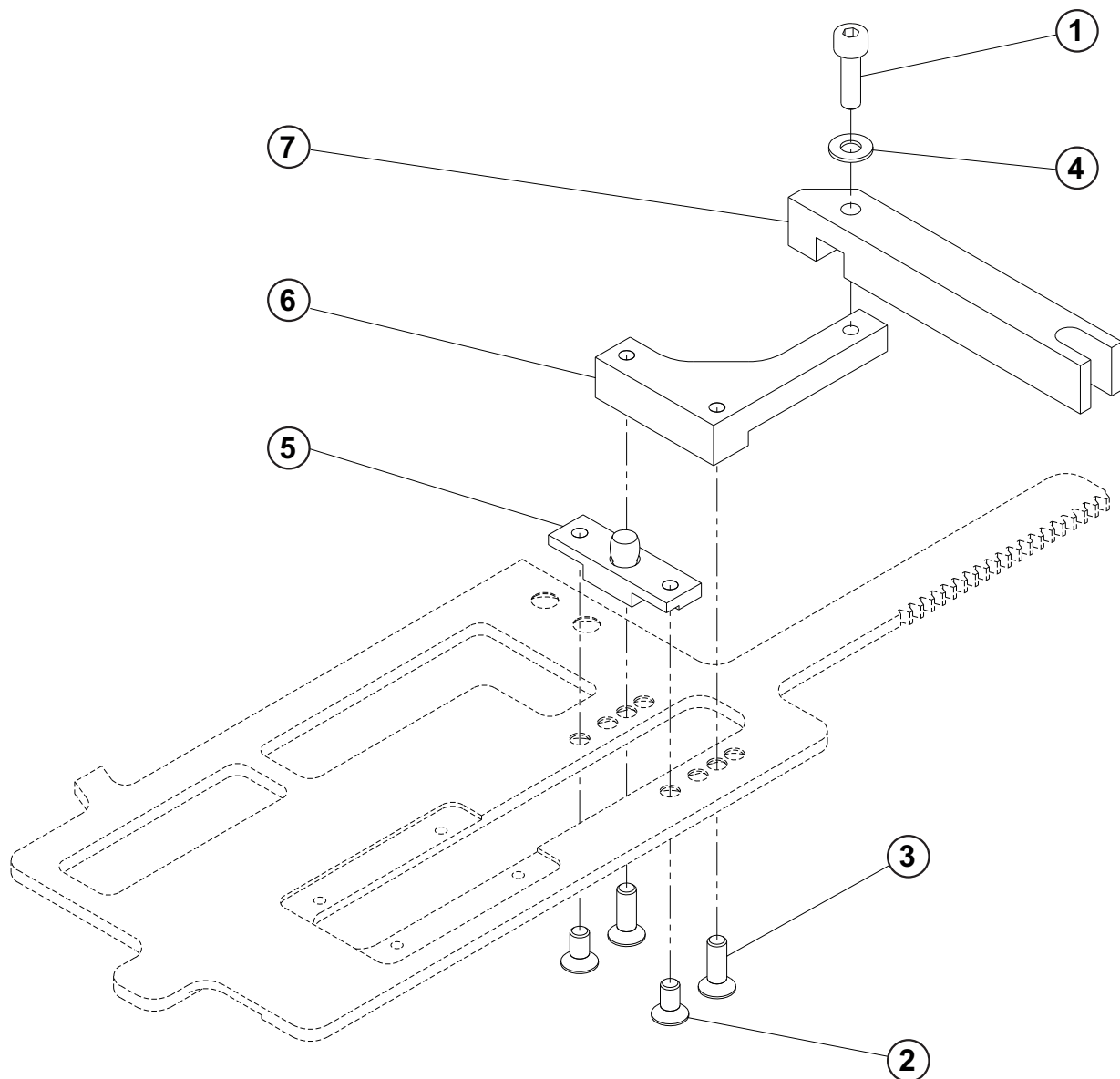
MECHANICAL INDEXER - LINEAR GUIDE



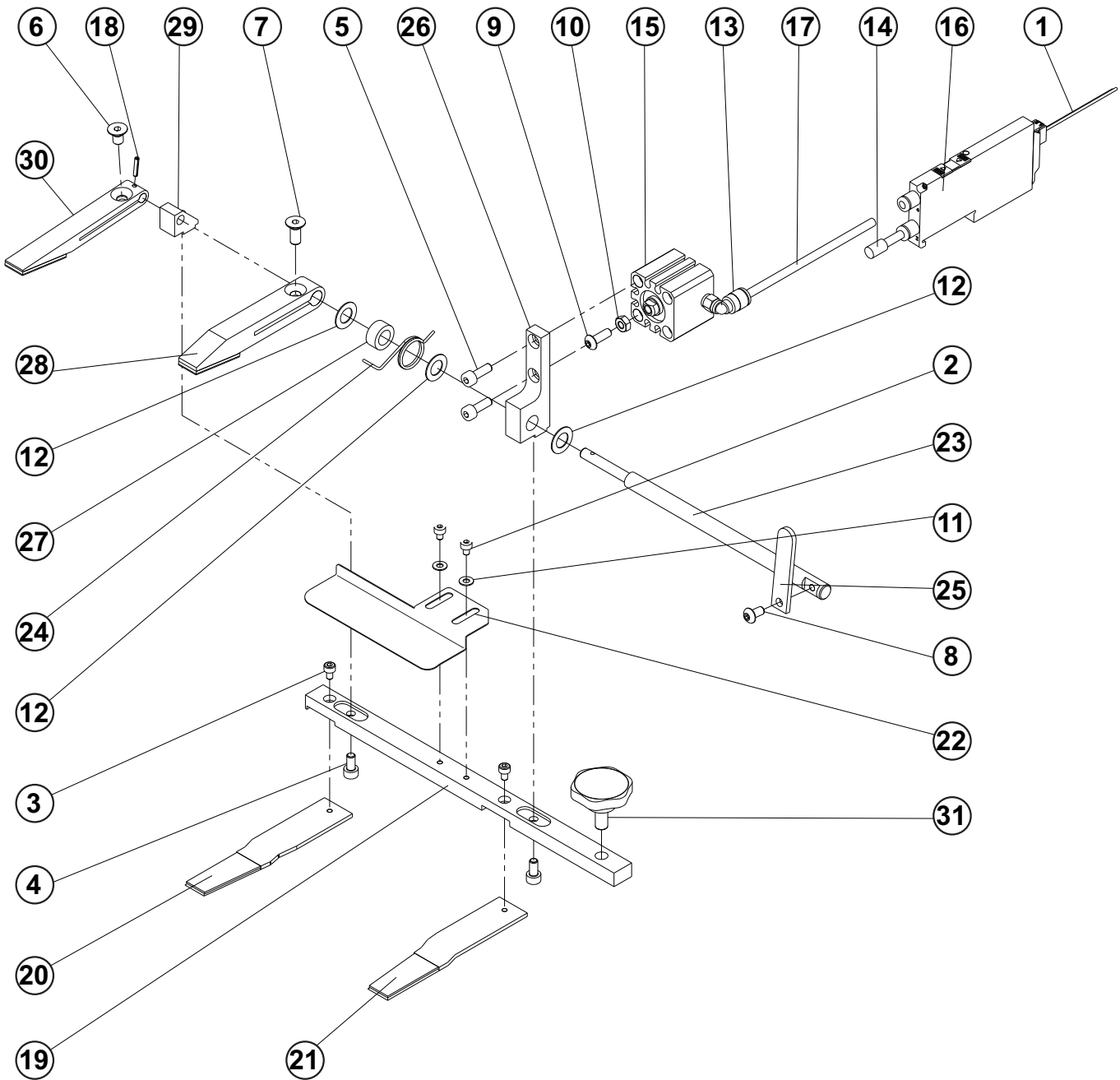
MECHANICAL INDEXER - CROSS LEVER ASSEMBLY



MECHANICAL INDEXER - CLAMPING CONNECTING PARTS



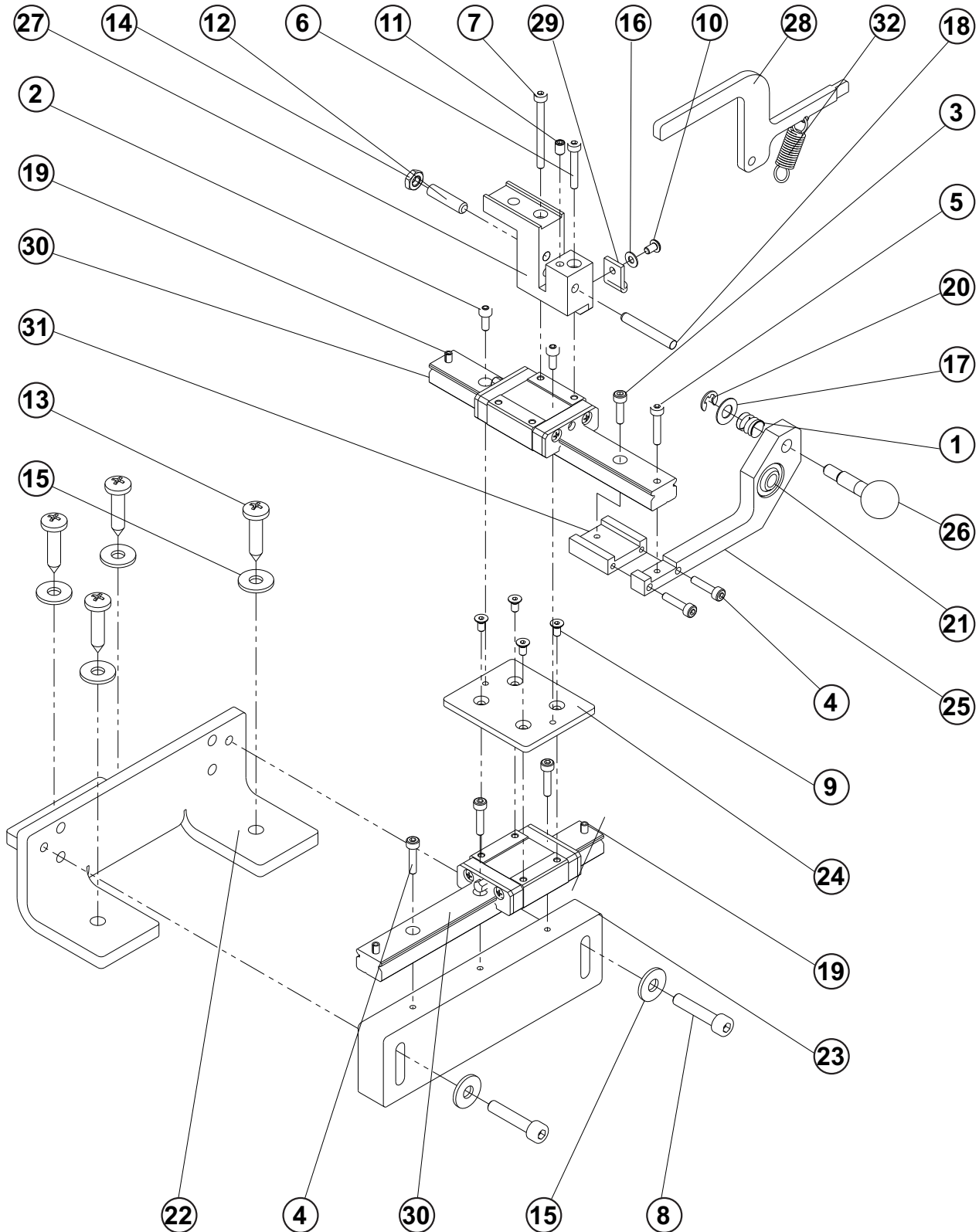
MECHANICAL INDEXER - CLAMPING ASSEMBLY



MECHANICAL INDEXER - CLAMPING ASSEMBLY

DET	PART NUMBER	DESCRIPTION	QTY.
01	06.2400.2.027	MECHANICAL INDEXER Y10 ASSY	1
02	08.6000.3.004	SCREW M3-4	2
03	08.6000.3.005	SCREW M3-5	2
04	08.6002.4.008	SCREW M4-8	2
05	08.6002.4.012	SCREW M4-12	2
06	08.6102.5.008	SCREW M5-8	1
07	08.6102.5.012	SCREW M5-12	1
08	08.6202.4.008	SCREW M4-8	1
09	08.6202.4.010	SCREW M4-10	1
10	08.6702.4.000	NUT M4	1
11	08.6850.3.000	WASHER 3,2	2
12	08.6887.8.000	DISTANCE WASHER 0,5x8x14	3
13	12.0008.3.411	CONNECTOR	1
14	12.0008.3.426	PLUG	1
15	12.0008.3.498	CYLINDER	1
16	12.0008.3.828	5/2 VALVE	1
17	12.0010.3.080	AIR TUBE- J10A	1
18	12.1014.0.004	PIN 2x8	1
19	24.4005.0.000	CLAMP RAIL	1
20	24.4006.0.000	CLAMPING MAT LEFT	1
21	24.4007.0.000	CLAMPING MAT RIGHT	1
22	24.4008.0.000	MATERIAL GUIDE	1
23	24.4009.0.000	SHAFT	1
24	24.4010.0.000	SPRING	1
25	24.4011.0.000	CLAMPING LEVER	1
26	24.4013.0.000	HOLDER CYLINDER	1
27	24.4014.0.000	BUSHING	1
28	24.4015.0.000	CLAMP FOOT RIGHT	1
29	24.4016.0.000	HOLDER CYLINDER	1
30	24.4017.0.000	CLAMP FOOT LEFT	1
31	24.4428.0.000	SCREW	1

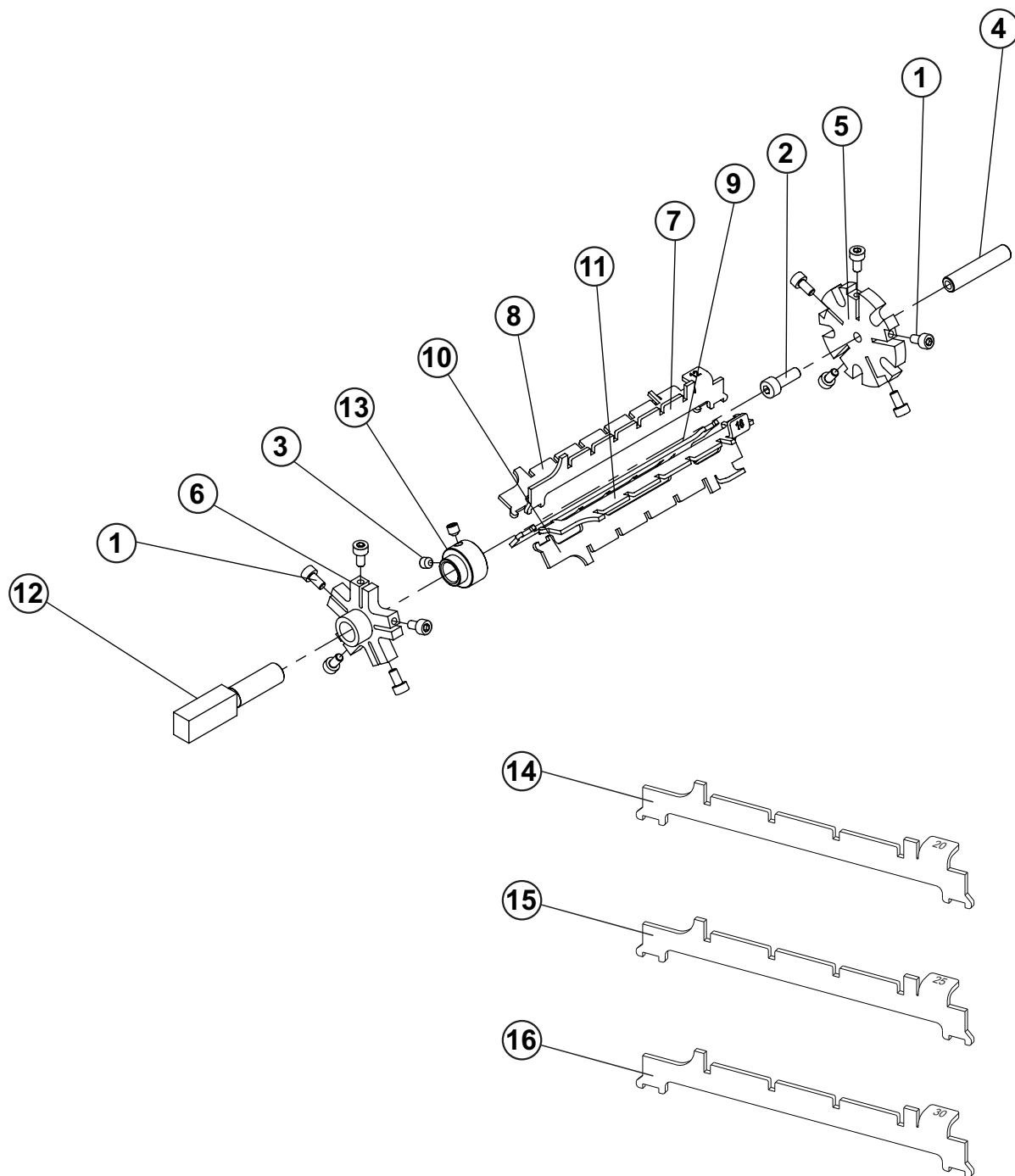
MECHANICAL INDEXER - BASE



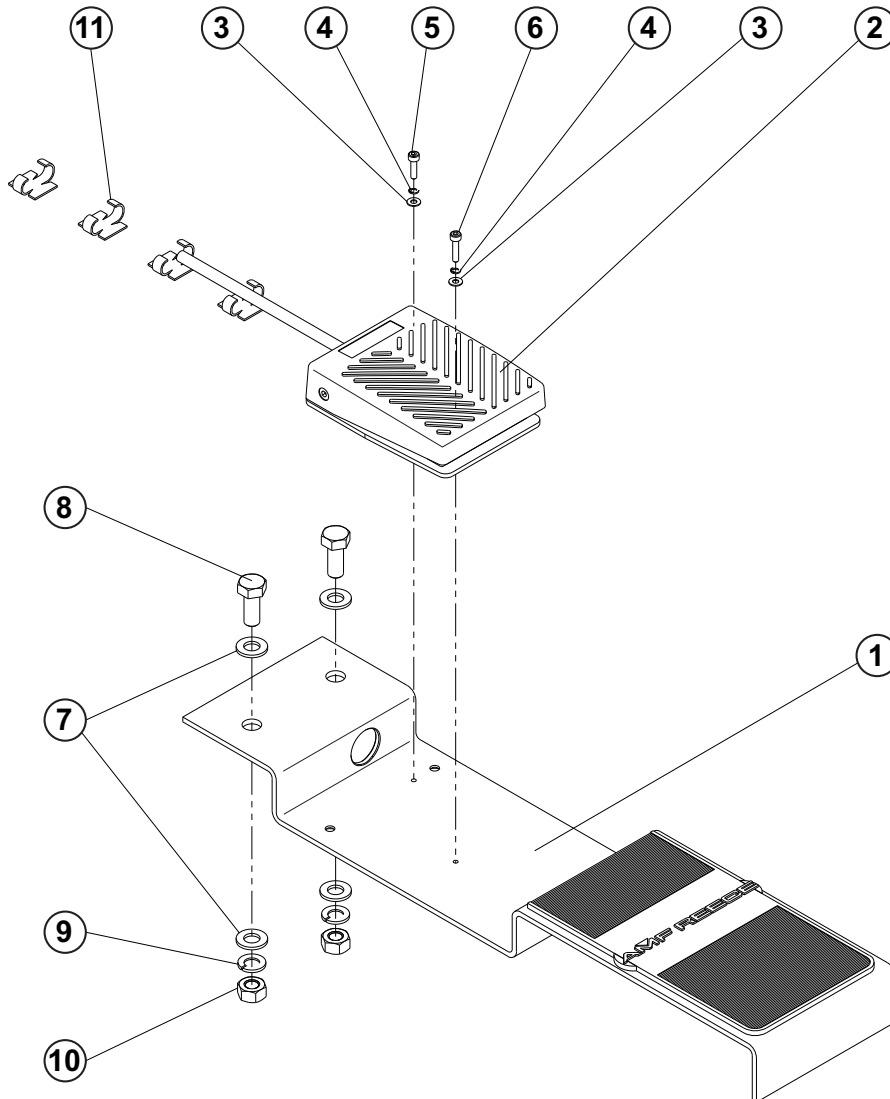
MECHANICAL INDEXER - BASE

DET	PART NUMBER	DESCRIPTION	QTY.
01	01.5002.0.000	SPRING-COMPRESSION	1
02	08.6002.3.008	SCREW M3-8	2
03	08.6002.3.012	SCREW M3-12	1
04	08.6002.3.014	SCREW M3-14	5
05	08.6002.3.016	SCREW M3-16	1
06	08.6002.3.020	SCREW M3-20	1
07	08.6002.3.035	SCREW M3-35	1
08	08.6002.5.025	SCREW M5-25	2
09	08.6102.3.006	SCREW M3-6	4
10	08.6202.3.005	SCREW M3-5	1
11	08.6402.4.006	SCREW M4-6	1
12	08.6412.5.020	SCREW M5-8	1
13	08.6663.5.025	SCREW 4,8-25	4
14	08.6712.5.000	NUT M5	1
15	08.6842.5.000	WASHER 5	6
16	08.6852.3.000	WASHER M3	1
17	08.6887.6.500	WASHER 6x12-0,5	1
18	12.1010.2.053	PIN 4h6x30	1
19	12.1014.0.314	PIN 3x14	3
20	12.1045.0.004	RETAINING RING 4	1
21	12.2085.0.005	BUSHING	1
22	24.4401.0.000	BASE PLATE	1
23	24.4402.0.000	BASE	1
24	24.4403.0.000	LINEAR BEARING PLATE	1
25	24.4404.0.000	BRACKET	1
26	24.4405.0.000	LOCKING STUD	1
27	24.4422.0.000	HODER	1
28	24.4423.0.000	LEVER	1
29	24.4425.0.000	HOLDER	1
30	24.4427.0.000	GUDIE	2
31	24.4429.0.000	SIDE BLOCK	1
32	36542017	SPRING	1

MECHANICAL INDEXER - RANGE MECHANISM



MECHANICAL INDEXER PEDAL



INDEX

PART NUMBER	PAGE	DET	QTY	PART NUMBER	PAGE	DET	QTY	PART NUMBER	PAGE	DET	QTY
36542017	3-11	32	1	08.6850.3.000	3-9	11	2	24.4405.0.000	3-11	26	1
01.5002.0.000	3-11	1	1	08.6852.3.000	3-11	16	1	24.4406.0.000	3-13	4	1
06.2400.2.026	3-15	2	1	08.6852.3.000	3-15	3	2	24.4407.0.000	3-13	5	1
06.2400.2.027	3-9	1	1	08.6852.4.000	3-7	4	1	24.4408.0.000	3-13	6	1
08.6000.3.004	3-9	2	2	08.6852.6.000	3-5	4	2	24.4409.0.000	3-13	7	1
08.6000.3.005	3-9	3	2	08.6852.8.000	3-15	7	4	24.4410.0.000	3-13	8	1
08.6002.2.010	3-5	1	7	08.6887.6.500	3-11	17	1	24.4411.0.000	3-13	9	1
08.6002.3.006	3-13	1	10	08.6887.8.000	3-9	12	3	24.4412.0.000	3-13	10	1
08.6002.3.008	3-3	1	2	12.0008.3.411	3-9	13	1	24.4413.0.000	3-13	11	1
08.6002.3.008	3-11	2	2	12.0008.3.426	3-9	14	1	24.4414.0.000	3-13	14	1
08.6002.3.012	3-11	3	1	12.0008.3.498	3-9	15	1	24.4415.0.000	3-13	15	1
08.6002.3.012	3-15	5	1	12.0008.3.828	3-9	16	1	24.4416.0.000	3-13	16	1
08.6002.3.014	3-11	4	5	12.0008.4.862	3-15	11	4	24.4417.0.000	3-13	12	1
08.6002.3.014	3-15	6	1	12.0010.3.080	3-9	17	1	24.4418.0.000	3-5	8	1
08.6002.3.016	3-11	5	1	12.1010.2.052	3-5	5	1	24.4419.0.000	3-5	9	1
08.6002.3.020	3-11	6	1	12.1010.2.053	3-11	18	1	24.4420.0.000	3-7	6	1
08.6002.3.035	3-11	7	1	12.1014.0.004	3-9	18	1	24.4421.0.000	3-7	7	1
08.6002.4.008	3-9	4	2	12.1014.0.314	3-11	19	3	24.4422.0.000	3-11	27	1
08.6002.4.010	3-3	2	4	12.1045.0.004	3-11	20	1	24.4423.0.000	3-11	28	1
08.6002.4.012	3-9	5	2	12.2070.1.012	3-3	4	1	24.4424.0.000	3-13	13	1
08.6002.4.012	3-13	2	1	12.2070.1.075	3-5	6	1	24.4425.0.000	3-11	29	1
08.6002.4.014	3-7	1	1	12.2070.1.076	3-5	7	1	24.4426.0.000	3-3	9	1
08.6002.5.025	3-11	8	2	12.2085.0.005	3-11	21	1	24.4427.0.000	3-11	30	2
08.6100.3.006	3-3	3	4	24.0097.0.000	3-15	1	1	24.4428.0.000	3-9	31	1
08.6102.3.006	3-11	9	4	24.4005.0.000	3-9	19	1	24.4429.0.000	3-11	31	1
08.6102.4.006	3-7	2	2	24.4006.0.000	3-9	20	1				
08.6102.4.012	3-7	3	2	24.4007.0.000	3-9	21	1				
08.6102.5.008	3-9	6	1	24.4008.0.000	3-9	22	1				
08.6102.5.012	3-9	7	1	24.4009.0.000	3-9	23	1				
08.6202.3.005	3-11	10	1	24.4010.0.000	3-9	24	1				
08.6202.4.008	3-9	8	1	24.4011.0.000	3-9	25	1				
08.6202.4.010	3-9	9	1	24.4013.0.000	3-9	26	1				
08.6312.6.016	3-5	2	1	24.4014.0.000	3-9	27	1				
08.6312.8.020	3-15	8	2	24.4015.0.000	3-9	28	1				
08.6402.4.004	3-13	3	2	24.4016.0.000	3-9	29	1				
08.6402.4.006	3-11	11	1	24.4017.0.000	3-9	30	1				
08.6402.5.005	3-5	3	3	24.4026.1.000	3-3	5	1				
08.6412.5.020	3-11	12	1	24.4027.0.000	3-3	6	1				
08.6663.5.025	3-11	13	4	24.4028.1.000	3-3	7	1				
08.6702.4.000	3-9	10	1	24.4087.0.000	3-3	8	2				
08.6702.8.000	3-15	10	2	24.4103.0.000	3-7	5	1				
08.6712.5.000	3-11	14	1	24.4401.0.000	3-11	22	1				
08.6802.3.000	3-15	4	2	24.4402.0.000	3-11	23	1				
08.6802.8.000	3-15	9	2	24.4403.0.000	3-11	24	1				
08.6842.5.000	3-11	15	6	24.4404.0.000	3-11	25	1				

