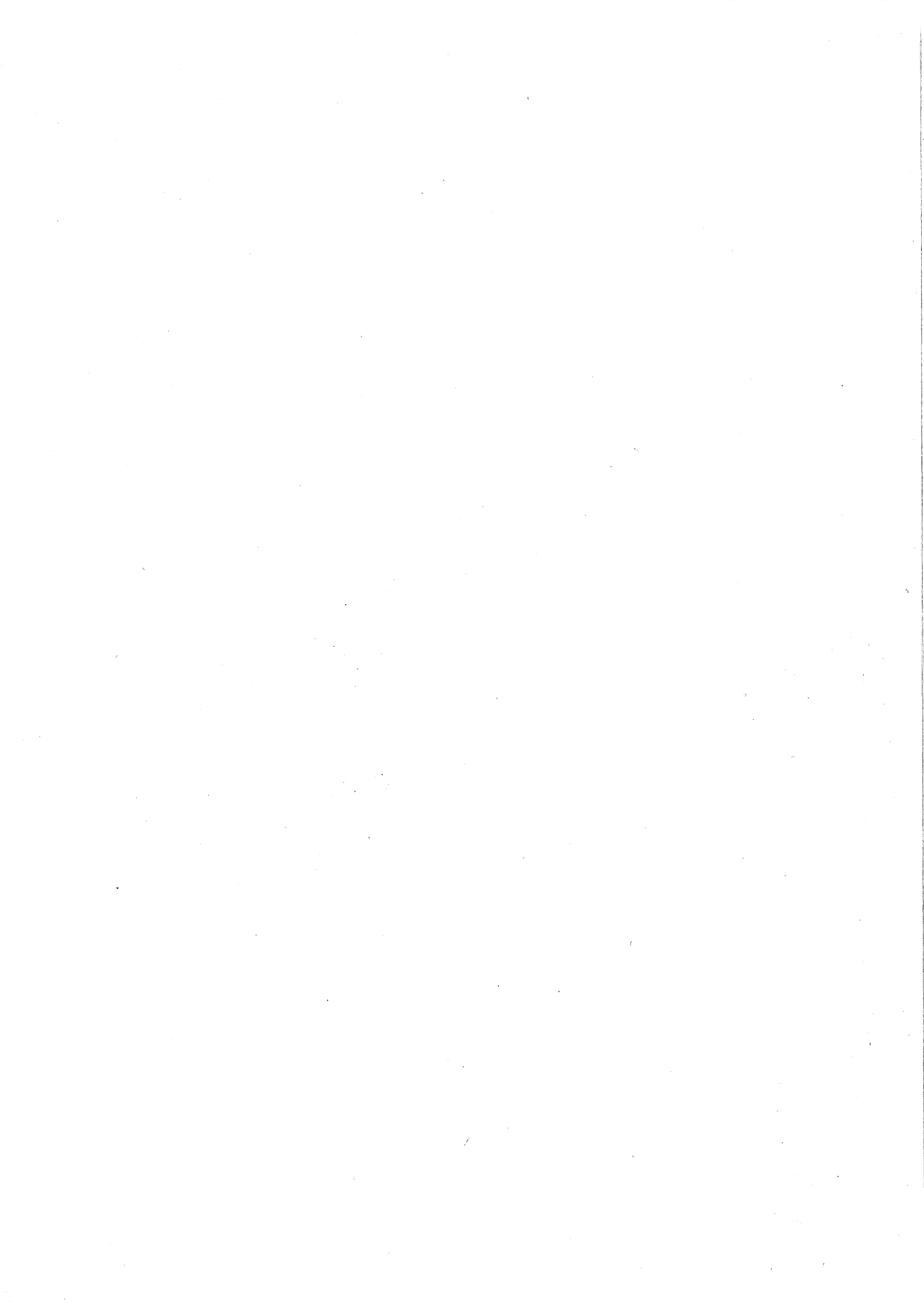


PARTS



APPAREL EQUIPMENT

CLASS 59 DIVISION 83

PARTS

| PART LIST AND DRAWING | PAGE |
|--|---------|
| Electronic Decorative Stitcher D-1 | 40 & 41 |
| Main Frame Assembly D-2. | 42 & 43 |
| Cam And Gear Drive Assembly D-3. | 44 & 45 |
| Upper Needle Bar Assembly D-4. | 46 & 47 |
| Presser Foot D-5 | 48 & 49 |
| Lower Needle Bar Assembly D-6. | 50 & 51 |
| Lower Loper & Thread Drum Assembly D-7. | 52 & 53 |
| Main Cam Shaft Assembly D-8. | 54 & 55 |
| Thread Gripper And Elevator Assembly D-9 | 56 & 57 |
| Pick Stitch And Tension Finger D-10. | 58 & 59 |
| Material Feed D-11 | 60 & 61 |
| Angle Stitch Mech. D-12. | 62 & 63 |
| Upper Loper D-13. | 64 & 65 |
| Material Guide D-14. | 66 & 67 |
| Presser Foot And Swivel Toe Mech. D-15 | 68 & 69 |
| Electronic Cabinet Assembly D-16 | 70 & 71 |



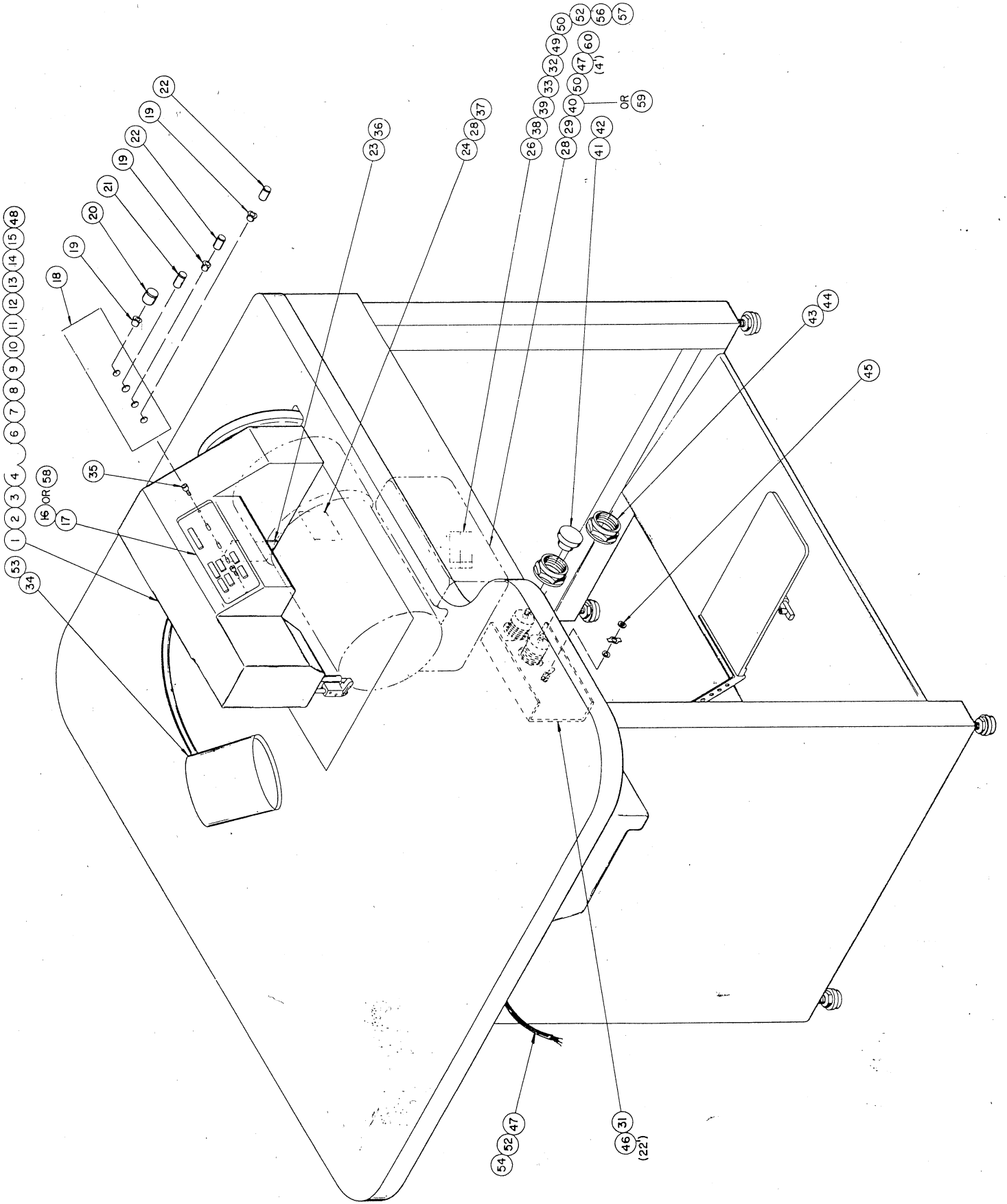
AMF Decorative Stitching Machine

APPAREL EQUIPMENT

ELECTRONIC DECORATIVE STITCHER D-1 49965-194
Serial No. 3151 & Up

CLASS 59 DIVISION 83

| ITEM NO. | DESCRIPTION | PART NO. | ITEM NO. | DESCRIPTION | PART NO. |
|----------|---|---------------|----------|--|---------------|
| 1 | Frame Assembly (D2) ----- | (E) 41334-005 | 38 | Screw, Binding Hd. 10-32 x 1/2 ----- | 4100-008 |
| 2 | Cam & Gear Drive Assembly (D3) ----- | (E) 42422-012 | 39 | Wrap, Spiral 1/2 Dia. (White) ----- | 27513-870 |
| 3 | Upper Needle Bar Assembly (D4) ----- | (E) 44411-045 | 40 | Motor, "Teledyne-Amco" 220/380, 50-60Hz. ----- | 27578-014 |
| 4 | Presser Foot Assembly (D5) ----- | (E) 42422-011 | 41 | Switch, Mushroom "C&H" 10250T122 (Red) ----- | 28211-105 |
| 5 | Lower Needle Bar Assembly (D6) ----- | (E) 44411-046 | 42 | Block, Contact "C&H" 10250T51 (N.C.) ----- | 28211-033 |
| 6 | Lower Looper & Thd. Drum (D7) ----- | (E) 44811-034 | 43 | Switch, Std. Button 10250T103 (Green) ----- | 28211-050 |
| 7 | Main Cam Shaft Assembly (D8) ----- | (D) 42253-027 | 44 | Block, Contact "C&H" 10250T53 (N.O.) ----- | 28211-031 |
| 8 | Thd. Gripper & Elevator (D9) ----- | (E) 44821-029 | 45 | Switch, Toggle "Carling" HKA271-73 ----- | 28211-088 |
| 9 | Pick Stitch & Tens. Fing. (D10) ----- | (E) 42211-008 | 46 | Screw, Self-Tapping 8x3/8 (Type "F") ----- | 2230-026 |
| 10 | Material Feed Assembly (D11) ----- | (E) 42761-084 | 47 | Cable, Rubber, SO 16-4 ----- | 18518-506 |
| 11 | Angle Stitch Mech. (D12) ----- | (D) 44821-030 | 48 | Base, Ty-Rap "Panduit" EMS-A ----- | 27513-866 |
| 12 | Upper Looper Assembly (D13) ----- | (E) 44811-035 | 49 | Cable, Rubber, SO 18-3 ----- | 18518-502 |
| 13 | Material Guide Assembly (D14) ----- | (E) 44211-105 | 50 | Grip, Cord, "T&B" 2269 (90°) ----- | 27511-166 |
| 14 | Press. Ft. & Swivel Toe (D15) ----- | (D) 44241-107 | 51 | | |
| 15 | Elect. Cabinet, Assembly (D16) ----- | (E) 46551-436 | 52 | Grip, Cord, "T&B" 2522 (Straight) ----- | 27511-197 |
| 16 | P.C. Brd., Panel Module ----- | (B) 37631-063 | 53 | Screw, Binding Hd. 1/4 - 20 x 1/2 ----- | 4100-022 |
| 17 | Cable, Panel ----- | (B) 46331-011 | 54 | Fitting, "Hollingsworth" S05363SF ----- | 27512-087 |
| 18 | Face Plate, "Eds" ----- | (C) 37731-130 | 55 | A.C. Schematic ----- | 37631-067 |
| 19 | Retainer, Bezel ----- | (B) 31697-004 | 56 | Screw, Rd. Head 8-32 x 1/2 ----- | 4030-023 |
| 20 | Knob, Sew Speed ----- | (B) 31617-023 | 57 | Terminal, "Hollingsworth" R4123SB ----- | 27512-270 |
| 21 | Knob, Reverse ----- | (B) 31617-024 | 58 | Single Phase P.C. Board ----- | (B) 37631-078 |
| 22 | Knob, Stitch Length ----- | (B) 31617-022 | 59 | Motor, "Teledyne-Amco" 240V, 50-60 Hz. ----- | 27378-015 |
| 23 | Cover, Wire ----- | (B) 33184-048 | 60 | Pedal Rod ----- | 42761-088 |
| 24 | P.C. Brd. Stitch Selector ----- | (B) 37631-062 | | | |
| 25 | | | | | |
| 26 | Switch Plate ----- | (B) 31871-027 | | | |
| 27 | Accessories, Standard ----- | (B) 49920-005 | | | |
| 28 | Cable, Mtr. & Selector ----- | (B) 46331-014 | | | |
| 29 | Pulley, Motor (50 Hz) ----- | (B) 36341-138 | | | |
| 30 | Accessories, Export ----- | (B) 49920-012 | | | |
| 31 | Cover, Outlet Box ----- | (C) 34125-139 | | | |
| 32 | Switch, Limit "Micro" LSZ 23K ----- | 28211-258 | | | |
| 33 | Rivet, Stl. Flat "Tinnors" 3/16 x 3/8 ----- | 08532-001 | | | |
| 34 | Lamp, "Moffat" A0615-PR ----- | 27395-015 | | | |
| 35 | Screw, Cap Hex. Soc. 8-32 x 3/8 ----- | 1000-236 | | | |
| 36 | Screw, Binding Hd. 8-32 x 3/8 ----- | 4100-054 | | | |
| 37 | Screw, Cap Hex. Soc. 6-32 x 3/8 ----- | 1000-017 | | | |





AMF Decorative Stitching Machine

APPAREL EQUIPMENT

CLASS 59 DIVISION 83

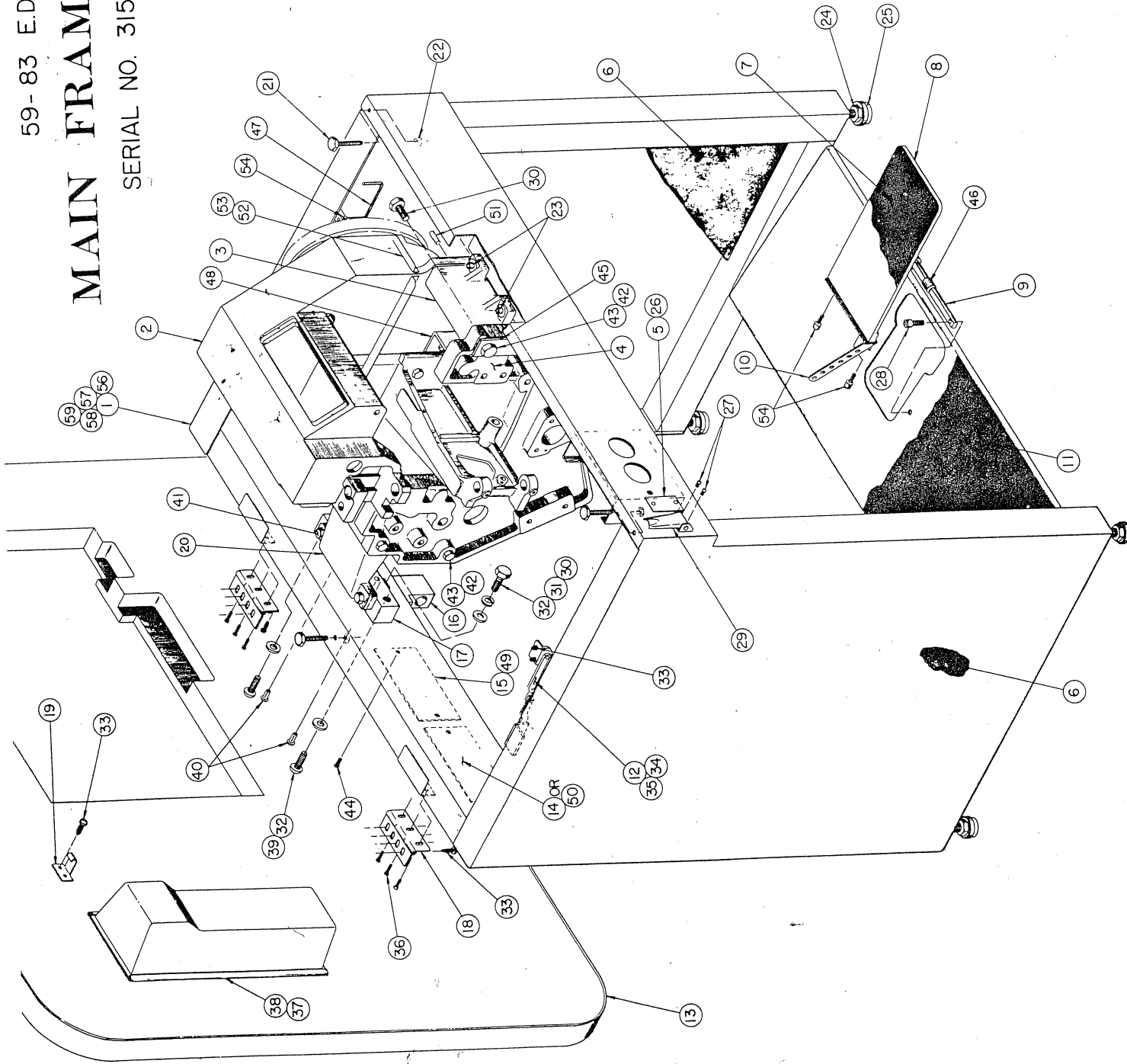
MAIN FRAME ASSEMBLY D-2 41334-005
Serial No. 3151 & Up

| ITEM NO. | DESCRIPTION | PART NO. | ITEM NO. | DESCRIPTION | PART NO. |
|----------|---|---------------|----------|-------------------------------------|---------------|
| 1 | Main Frame | (E) 35328-071 | 38 | Fl. Hd. Wood Screw No. 8 x 3/4 | 05000-040 |
| 2 | Needle Bar Hd. Assembly | (D) 41321-019 | 39 | ex. Soc. But. Hd. Screw /8-16 x 1 | 01200-024 |
| 3 | Front Spacer | (B) 35371-003 | 40 | Rd. Hd. Grooved Stud No. 16 x 1/2 | 22913-025 |
| 4 | Tie Frame | (E) 35315-013 | 41 | Hex. Hd. Screw 5/16-18 x 1 | 04200-027 |
| 5 | Name Plate | (D) 37711-017 | 42 | Dowel Pin 3/16 x 1 1/4 | 08000-045 |
| 6 | Sound Suppressor | (B) 32711-019 | 43 | Hex. Hd. Screw 3/8-16 x 1 1/2 | 04200-004 |
| 7 | Foot Pedal Tread | (B) 32115-005 | 44 | 'Century Fastners' Rivit No. ABA 43 | 22914-006 |
| 8 | Foot Pedal | (C) 36617-003 | 45 | Bracket, Switch Mount. | (B) 34416-044 |
| 9 | Shaft, Foot Pedal | (B) 31225-015 | 46 | "Oillite" Bushing No. AA-521-1 | 23132-142 |
| 10 | Pedal Extension | (C) 34445-019 | 47 | Retainer Rod | (B) 31922-018 |
| 11 | Foot Plate Tread | (B) 32216-086 | 48 | Sensor Mtg. Bracket | (B) 34378-064 |
| 12 | Table Support | (B) 41441-059 | 49 | Patent Plate Export | (C) 37711-032 |
| 13 | Table Top | (E) 35351-180 | 50 | Name Plate Units Only | (B) 50201-002 |
| 14 | Patent Plate | (C) 37713-001 | 51 | Dowel Pin 5/16 x 3/4 | 08000-056 |
| 15 | Name Plate | (B) 37712-010 | 52 | Binding Hd. Screw 8-32 x 1/4 | 04100-052 |
| 16 | Motor Mount | (B) 35251-104 | 53 | Angle, Filler | (B) 34268-124 |
| 17 | Mach. Support, Rear | (B) 32418-075 | 54 | Screw, Hex. Soc. Cap 8-32 x 1/2 | 1000-025 |
| 18 | Hinge | (B) 41214-006 | 55 | Screw, Hex. Soc. Cap 5/16-18 x 1/2 | 4200-029 |
| 19 | Hook | (B) 34584-007 | 56 | Lockwasher 5/16 | 7100-008 |
| 20 | Spacer, Rear, Tie Frame | (C) 35472-011 | 57 | Flat Washer 5/16 | 7012-010 |
| 21 | 'Ohio' Leveling Screw No. FH3323 | 22962-014 | 58 | Hex. Nut 5/16-18 | 6000-008 |
| 22 | Hex. Jam Nut 3/8-16 | 06020-015 | 59 | | |
| 23 | Hex. Soc. Hd. Cap Screw 5/16-18 x 1 | 01000-047 | | | |
| 24 | Hex. Jam Nut 1/2-13 | 06020-010 | | | |
| 25 | 'Ohio' Leveling Screw No. FB4444 | 22962-030 | | | |
| 26 | 'Century' Fastners Rivit No. ABA 34 | 22914-005 | | | |
| 27 | Rd. Hd. Mach. Screw No. 6-32 x 1/4 | 04030-009 | | | |
| 28 | Hex. Soc. Hd. Cap Screw No. 10-32 x 3/4 | 01000-019 | | | |
| 29 | 'Camloc' Latch No. 51L1-1-1AB | 22972-010 | | | |
| 30 | Hex. Hd. Screw 3/8-16 x 1 | 04200-450 | | | |
| 31 | Spring Lockwasher 3/8 | 07100-009 | | | |
| 32 | Flatwasher 3/8 | 07012-003 | | | |
| 33 | Pan Hd. Screw (Type A) No. 10 x 5/8 | 02060-018 | | | |
| 34 | ASA Lock Screw No. 1A | 22911-038 | | | |
| 35 | 'ESNA' Lock Nut No. 2INTE-058 | 06100-012 | | | |
| 36 | Truss Hd. Screw No. 10-32 x 5/16 | 04140-040 | | | |
| 37 | 'Superior' Stl. Drawer No. 333 Grey | 27571-120 | | | |

59-83 E.D.S.

MAIN FRAME ASS'Y.

SERIAL NO. 3151 & UP





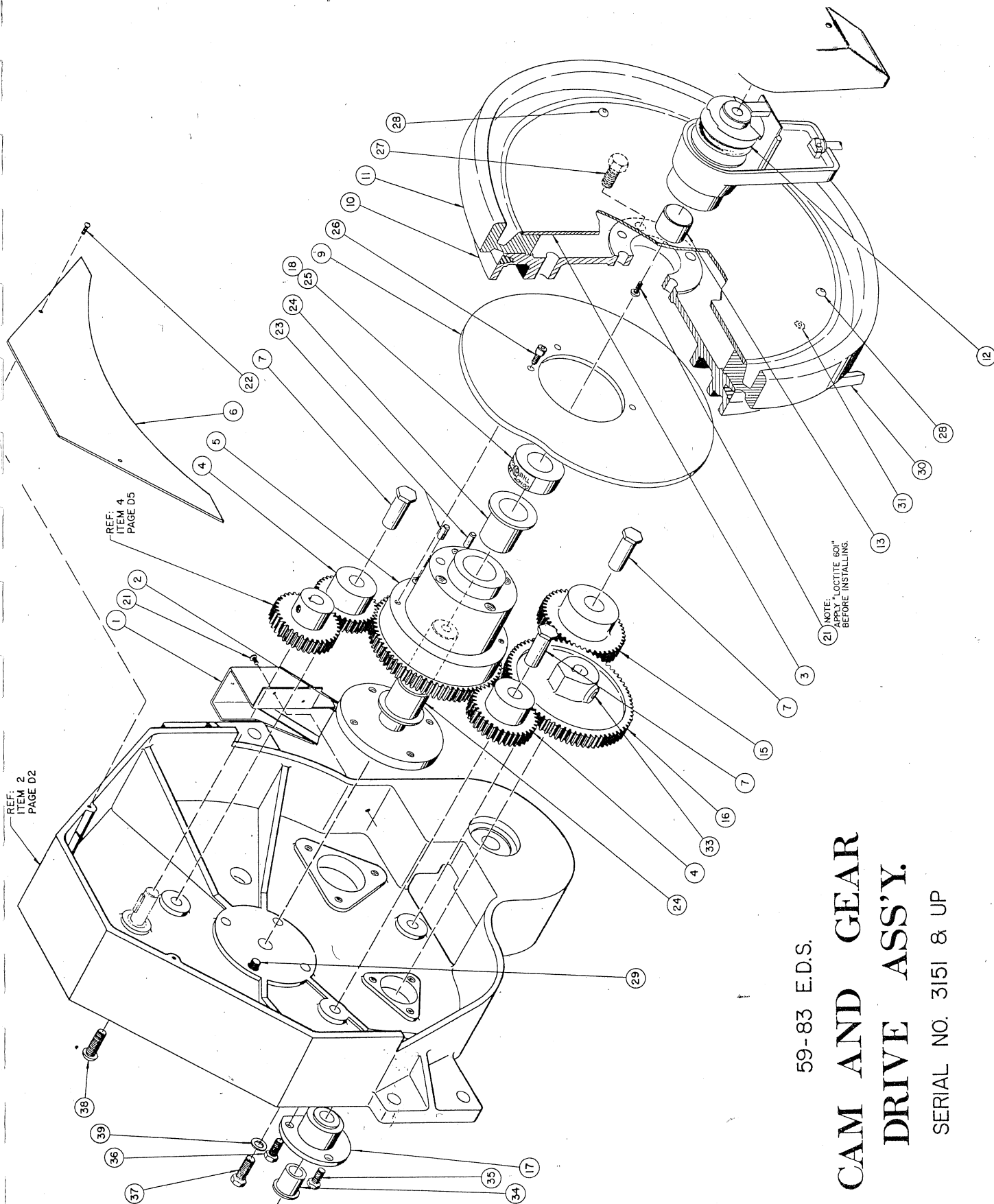
AMF Decorative Stitching Machine

APPAREL EQUIPMENT

CAM AND GEAR DRIVE ASSEMBLY D-3 42422-012
Serial No. 3151 & Up

CLASS 59 DIVISION 83

| ITEM NO. | DESCRIPTION | PART NO. | ITEM NO. | DESCRIPTION | PART NO. |
|----------|--|---------------|----------|---------------------------------------|----------|
| 1 | Cover, Rear Drum ----- | (C) 35812-049 | 38 | Screw, But, Hex, Soc. 3/8-24 x 1----- | 1200-083 |
| 2 | Drive Gear Stud ----- | (C) 31766-009 | 39 | Washer, Lock 3/8----- | 7100-009 |
| 3 | Cover, Handwheel ----- | (B) 31523-037 | | | |
| 4 | Small Inter Gear ----- | (B) 36224-010 | | | |
| 5 | Drive Gear ----- | (C) 36228-020 | | | |
| 6 | Guard, Belt ----- | (C) 32652-015 | | | |
| 7 | Gear Stud ----- | (B) 31838-030 | | | |
| 8 | | | | | |
| 9 | Left Upper Looper Cam ----- | (D) 36513-082 | | | |
| 10 | Needle Bar Cam ----- | (D) 36516-040 | | | |
| 11 | Needle Bar Hand Wheel ----- | (C) 36713-007 | | | |
| 12 | Disc, Positioning ----- | (B) 31565-027 | | | |
| 13 | Sensor Drive Shaft ----- | (B) 31652-001 | | | |
| 14 | | | | | |
| 15 | Lg. Intermediate Gear ----- | (B) 36226-017 | | | |
| 16 | Cam Shaft Drive Gear ----- | (B) 36228-009 | | | |
| 17 | Cam Shaft Bearing ----- | (B) 36515-032 | | | |
| 18 | Handwheel Collar Decal ----- | (B) 37732-022 | | | |
| 19 | | | | | |
| 20 | | | | | |
| 21 | Screw, Binding Hd. 8-32 x 3/8----- | 4100-054 | | | |
| 22 | Screw, Hx Soc But Hd. 8-32 x 3/8----- | 1200-005 | | | |
| 23 | Pin, Roll 3/16 x 3/8----- | 8200-031 | | | |
| 24 | Bearing, "Oilite" FF-1213-4----- | 23161-140 | | | |
| 25 | Collar, Set SC100 1" I.D.----- | 24116-150 | | | |
| 26 | Screw, Hex Soc, Cap. 10-32 x 1/2----- | 4200-057 | | | |
| 27 | Screw, Hex Hd 3/8-16 x 1----- | 4200-003 | | | |
| 28 | Screw, Hx, Soc But Hd. 10-32 x 1/2----- | 1200-001 | | | |
| 29 | Screw, Cap Hex, Soc. 5/16-18 x 5/8----- | 1000-099 | | | |
| 30 | V-Belt, "Goodyear" 4L640----- | 24323-130 | | | |
| 31 | Screw, Hx, Soc Hd Cap 5/16-18 x 3/4----- | 1002-040 | | | |
| 32 | | | | | |
| 33 | Screw, Set Hx, Soc Cup Pt. 1/4-20 x 1/2----- | 3200-023 | | | |
| 34 | Bushing, "Oilite" FF-707-2----- | 23161-063 | | | |
| 35 | Screw, Hex, Hd. 1/4-20 x 5/8----- | 4200-013 | | | |
| 36 | Screw, Hex, Hd. 1/4-20 x 1/2----- | 4200-012 | | | |
| 37 | Screw, Hex, Hd. 3/8-24 x 1----- | 4200-267 | | | |



59-83 E.D.S.

CAM AND GEAR DRIVE ASS'Y.

SERIAL NO. 3151 & UP



AMF Decorative Stitching Machine

APPAREL EQUIPMENT

UPPER NEEDLE BAR ASSEMBLY D-4 44411-045
Serial No. 3151 & Up

CLASS 59 DIVISION 83

| ITEM NO. | DESCRIPTION | PART NO. | ITEM NO. | DESCRIPTION | PART NO. |
|----------|--------------------------------------|---------------|----------|---|-----------|
| 1 | Sleeve Extension | (B) 31674-025 | 38 | Collar, Shaft, "SDP" 702-11406 | 24117-520 |
| 2 | Needle Bar Spring Cap | (B) 31695-011 | 39 | Screw, Hx Soc. But. Hd. 10-32 x 3/8 | 1200-007 |
| 3 | Needle Bar Spring | (B) 36532-021 | 40 | Screw, Hx Soc. Hd. Cap. 5-40 x 1/8 | 1000-298 |
| 4 | Needle Lock Spring | (B) 36532-022 | 41 | Bushing "Ollite" AA309 | 23132-030 |
| 5 | Needle Stop Spring | (B) 36531-010 | 42 | Scr, Set Hx Soc Cup Pt. 1/4-20 x 1/4 | 3100-008 |
| 6 | Needle Stop | (B) 36771-021 | 43 | Nut, Hex S, Stl 10-32 | 6002-001 |
| 7 | Needle Clamp Sleeve | (B) 31566-008 | 44 | Screw, Hex. Soc. Hd. Cap 5/16-18 x 3/4 | 1000-039 |
| 8 | Needle Support Sleeve | (B) 35511-021 | 45 | Bearing, Ball, "Fafnir" 39KTT | 23231-030 |
| 9 | Rocker Arm Pivot | (B) 31723-007 | 46 | Locknut, "Esna" 29 NTE-54 | 6104-001 |
| 10 | Needle Bar Assembly | (B) 42531-081 | 47 | Pin, Groove, "Drive Loc" 1/4 x 1 (Type G) | 22913-039 |
| 11 | | | 48 | Screw, Hex. Soc. Hd. Cap 8-32 x 1/2 | 1000-013 |
| 12 | Needle Bar Rocker Arm | (C) 36691-014 | 49 | Screw, Hex. Soc. Cone Pt. 8-32 x 1/2 | 3130-001 |
| 13 | Rocker Arm Bearing | (B) 35521-048 | 50 | Nut, Jam Hex. 8-32 | 6020-019 |
| 14 | | | | | |
| 15 | Rocker Arm Bearing Stud | (B) 31773-015 | | | |
| 16 | Assy-Threader Lever | (B) 36631-031 | | | |
| 17 | Threader Bearing | (B) 33215-069 | | | |
| 18 | Threader Arm | (B) 31996-006 | | | |
| 19 | Threader Needle | (B) 37213-001 | | | |
| 20 | Round Needle | (B) 37213-007 | | | |
| 21 | Bearing Block Stud | (B) 36518-030 | | | |
| 22 | | | | | |
| 23 | Needle Bar Bearing Block | (B) 33182-005 | | | |
| 24 | Pin Retainer | (B) 35131-002 | | | |
| 25 | Stop Pin | (B) 31264-001 | | | |
| 26 | Needle Bar Small Bush. | (B) 36523-022 | | | |
| 27 | Locating Pin | (B) 31151-001 | | | |
| 28 | Needle Bar Clamp Upper | (B) 33441-003 | | | |
| 29 | Needle Bar | (B) 31697-003 | | | |
| 30 | Sleeve Ext. Conn. Pin | (B) 31111-009 | | | |
| 31 | Large Bushing | (B) 36523-021 | | | |
| 32 | Spring Plunger Washer | (B) 31412-001 | | | |
| 33 | Sleeve Adjust. Nut | (B) 31593-007 | | | |
| 34 | Spring, Threader | (B) 36546-023 | | | |
| 35 | Screw, Mach. Hex. Hd. 10-32 x 5/8 | 4200-011 | | | |
| 36 | Washer, Lock, HI-Collar 10 | 7106-002 | | | |
| 37 | Ball, Stl "New Departure" 11/64 Dia. | 22965-006 | | | |

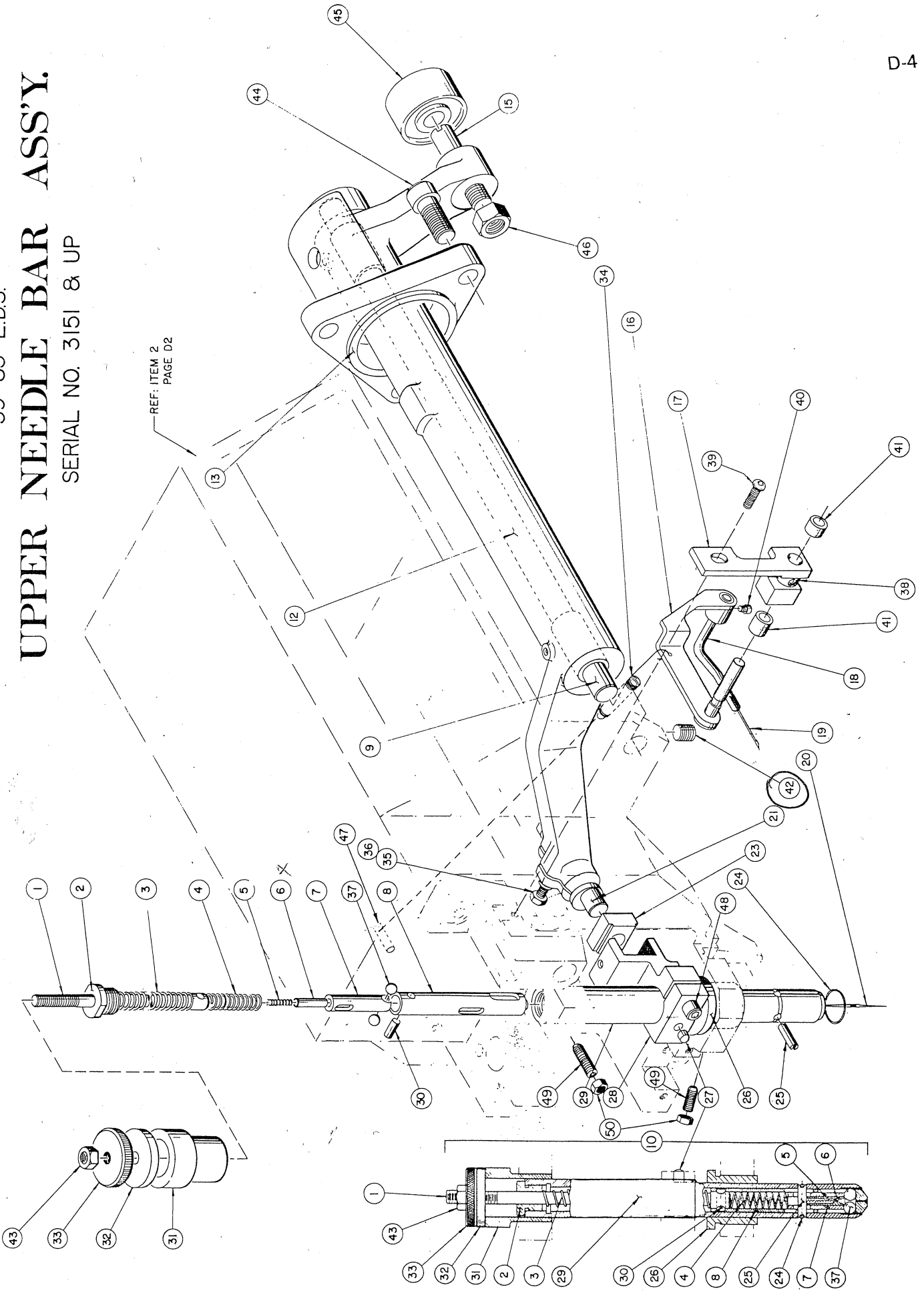
8 - NEEDLE NR: 38 = 0.038" = 0.97mm

59-83 E.D.S.

UPPER NEEDLE BAR ASS'Y.

SERIAL NO. 3151 & UP

REF. ITEM 2
PAGE D2





AMF Decorative Stitching Machine

APPAREL EQUIPMENT

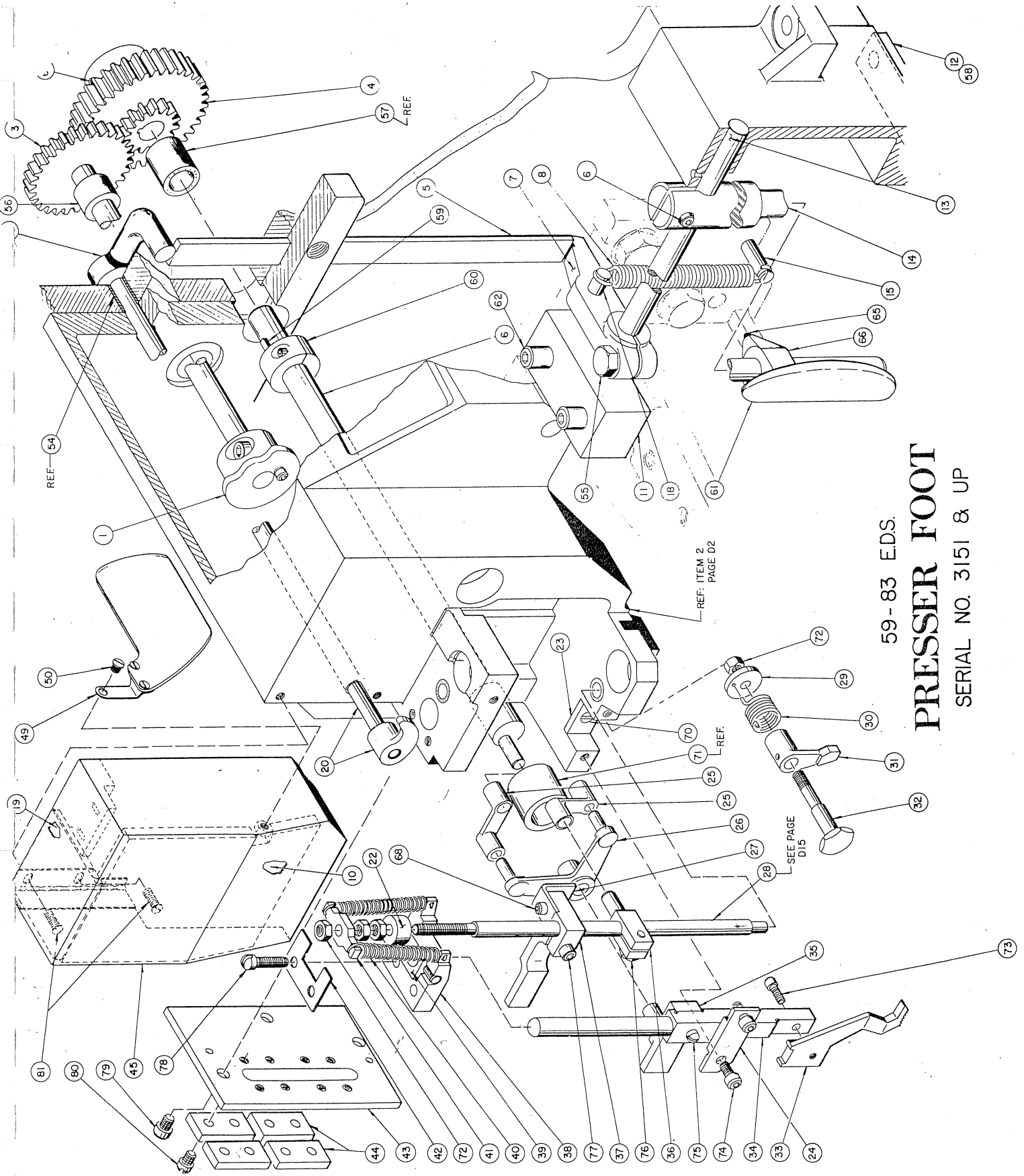
PRESSER FOOT D-5 42422-011
Serial No. 3151 & Up

CLASS 59 DIVISION 83

8453

| ITEM NO. | DESCRIPTION | PART NO. | ITEM NO. | DESCRIPTION | PART NO. |
|----------|-------------------------------|---------------|----------|---|-----------|
| 1 | Ass'y, Rt. Upper Looper Cam | (B) 42233-028 | 51 | Bearing, "Oillite" AA520-3 | 23132-123 |
| 2 | Lifter Lever | (B) 36651-001 | 52 | Screw, Hex Hd. 1/4-20 x 3/4 | 4200-007 |
| 3 | Assy-Shaft Right Looper Cam | (B) 36227-019 | 53 | Bearing, "Oillite" AA630-1 | 23132-178 |
| 4 | Assy-Presser Foot Drive Gear | (B) 36271-013 | 54 | Bearing, "Oillite" AA627-4 | 23132-199 |
| 5 | Lifter Rod | (B) 32111-012 | 56 | Screw, Hex. Soc. Hd. Cap 1/4-20 x 5/8 | 1000-026 |
| 6 | Operation Shaft | (B) 36518-077 | 57 | Key "Hi-Pro" 504 (1/8 x 5/8) | 9020-001 |
| 7 | Lifter Lever | (B) 36651-002 | 58 | Collar, Clamp 7/16 | 24117-011 |
| 8 | Lever Spring | (B) 36543-018 | 59 | Pad, Knee Lift, "Kennedy" For 2767 | 26913-025 |
| 9 | | | 60 | Screw, Hx Soc. Hd. Cap. 1/4-20 x 3/4 | 1000-008 |
| 10 | Sound Suppressor | (B) 32731-026 | 61 | Screw, Set Hx. Soc. Cup Pt. 10-32 x 1/4 | 3100-012 |
| 11 | Presser Foot Bearing | (B) 35221-055 | 62 | Screw, Set Hx. Soc. Cup Pt. 5/16-18 x 3/8 | 3100-017 |
| 12 | Lever Stop | (B) 32712-011 | 63 | Plate, Knee, "Kennedy" 2767 | 26913-030 |
| 13 | Presser Ft. Oper. Shaft | (B) 31133-018 | 64 | | |
| 14 | Knee Oper. Shaft | (B) 31721-021 | 65 | | |
| 15 | Spring Post | (B) 31721-040 | 66 | | |
| 16 | | | 67 | | |
| 17 | Spring Post | (B) 31721-038 | 68 | Screw, Hex. Soc. Cap 6-40 x 1/4 | 1000-059 |
| 18 | Sound Suppressor | (B) 32115-013 | 69 | Screw, Flat Hd. 5-40 x 3/8 | 4000-053 |
| 19 | Shaft/Press. Ft. Lifter | (B) 36619-044 | 70 | Bushing "Oillite" AA807-3 | 23132-297 |
| 20 | | | 71 | Nut, Hex 10-32 | 6000-002 |
| 21 | | | 72 | Screw, Hex. Soc. Cap 6-40 x 5/16 | 1000-301 |
| 22 | Stationary Press, Foot Cap | (B) 31571-002 | 73 | Screw, Hex. Soc. Cap 5-40 x 1/4 | 1000-004 |
| 23 | Follower Side Guide Plate | (B) 32217-002 | 74 | Screw, Fil Hd. 8-32 x 1/2 | 4120-001 |
| 24 | Retainer Strap | (B) 33242-002 | 75 | Screw, Hx. Hd. 10-32 x 3/8 | 4200-039 |
| 25 | Connector Link | (B) 36621-001 | 76 | Screw, Hx. Soc. Hd. Cap 8-32 x 1/2 | 1000-013 |
| 26 | Lifting Bell Crank | (B) 36672-047 | 77 | Screw, Fil Hd. 8-32 x 5/8 | 4120-009 |
| 27 | Conn. Link Retainer | (B) 34221-010 | 78 | Screw, Hx Soc Hd Cap 10-32 x 3/8 | 1000-032 |
| 28 | Presser Foot Assembly | (C) 42711-008 | 79 | Screw, Fil Hd. 8-32 x 1/4 | 4122-093 |
| 29 | Adjusting Collar | (B) 31521-001 | 80 | Screw, Binding Hd. 8-32 x 3/8 | 4100-054 |
| 30 | Torsion Spring | (B) 36543-020 | 81 | | |
| 31 | Spring Lever | (B) 36613-036 | | | |
| 32 | Lever Stud | (B) 31718-027 | | | |
| 33 | Follower Presser Foot | (C) 36611-039 | | | |
| 34 | Filwr. Press, Foot Shaft | (B) 31642-007 | | | |
| 35 | Bell Crank Stud | (B) 35571-021 | | | |
| 36 | Presser Foot Stud | (B) 31873-013 | | | |
| 37 | Connector Link Block | (B) 33422-001 | | | |
| 38 | Swivel Seat | (B) 33256-011 | | | |
| 39 | Foot Swivel | (B) 31876-011 | | | |
| 40 | Spring, Tension Follower Ft. | (B) 36541-005 | | | |
| 41 | Clip, Spring | (B) 32729-001 | | | |
| 42 | Swivel Seat Cover | (B) 32732-001 | | | |
| 43 | Rear Cover | (B) 34732-023 | | | |
| 44 | Bell Crank Stud Guide | (B) 32221-007 | | | |
| 45 | Assy Front Cover | (C) 35771-051 | | | |
| 46 | | | | | |
| 47 | | | | | |
| 48 | | | | | |
| 49 | Eyeguard Assy "Singer" 259832 | 26911-186 | | | |
| 50 | Screw, Bind Hd. 1/4-20 x 3/8 | 4100-070 | | | |

70. 3661.041 26911-186 - ATT



59-83 EDS.
PRESSER FOOT
SERIAL NO. 3151 & UP



AMF Decorative Stitching Machine

APPAREL EQUIPMENT

LOWER NEEDLE BAR ASSEMBLY D-6 44411-046
 Serial No. 3151 & Up

CLASS 59 DIVISION 83

| ITEM NO. | DESCRIPTION | PART NO. | ITEM NO. | DESCRIPTION | PART NO. |
|----------|---|---------------|----------|--|-----------|
| 1 | Needle Bar Assembly | (C) 42531-081 | 38 | | |
| 2 | Rocker Arm Bearing Stud | (B) 31773-015 | 39 | | |
| 3 | Rocker Arm Bearing | (B) 35521-048 | 40 | Screw, Hx Soc Hd Cap 10-32 x 5/8 | 1002-106 |
| 4 | Rocker Arm | (C) 36691-014 | 41 | Screw, Set Hx Soc. Cone Pt. 8-32 x 1/2 | 3130-001 |
| 5 | Rocker Arm Pivot | (B) 31723-007 | 42 | Nut, Jam Hex. 8-32 | 6020-019 |
| 6 | Rocker Arm Bearing | (B) 35521-049 | 43 | Screw, Cap Hx. Soc. 8-32 x 1/2 | 1000-013 |
| 7 | Bearing Block Stud | (B) 36518-030 | 44 | Ball, STL. "New Departure" 11/64 | 22965-006 |
| 8 | Round Needle | (B) 37213-007 | 45 | Nut, Hex S. STL. 10-32 | 6002-001 |
| 9 | Pin Retainer | (B) 35131-002 | 46 | | |
| 10 | Needle Bar | (B) 31697-003 | | | |
| 11 | Shim | (B) 32223-045 | | | |
| 12 | Stop Pin | (B) 31264-001 | | | |
| 13 | Small Bushing | (B) 36523-022 | | | |
| 14 | Locating Pin | (B) 31151-001 | | | |
| 15 | Lower Clamp, Needle Bar | (B) 33441-002 | | | |
| 16 | Needle Support Sleeve | (B) 35511-021 | | | |
| 17 | Sleeve Extn. Conn. Pin | (B) 31111-009 | | | |
| 18 | Needle Clamp Sleeve | (B) 31566-008 | | | |
| 19 | Needle Stop | (B) 36771-021 | | | |
| 20 | Needle Stop Spring | (B) 36531-010 | | | |
| 21 | Needle Bar Bearing Block | (B) 33182-005 | | | |
| 22 | | | | | |
| 23 | Sleeve Adjtg. Nut | (B) 31593-007 | | | |
| 24 | Spring Plunger Washer | (B) 31412-001 | | | |
| 25 | Large Bushing | (B) 36523-021 | | | |
| 26 | Sleeve Extension | (B) 31674-025 | | | |
| 27 | Spring Cap | (B) 31695-011 | | | |
| 28 | Needle Bar Spring | (B) 36532-021 | | | |
| 29 | Needle Lock Spring | (B) 36532-022 | | | |
| 30 | | | | | |
| 31 | | | | | |
| 32 | Screw, Set Hx Soc Cup Pt. 1/4-20 x 5/16 | 3100-066 | | | |
| 33 | Bearing, Ball "Fafnir" 39KTT | 23231-030 | | | |
| 34 | Nut, Lock "ESNA" 29NTE-54 | 6104-001 | | | |
| 35 | Screw, Hx Soc Hd Cap 5/16-18 x 3/4 | 1000-039 | | | |
| 36 | | | | | |
| 37 | Pin, Dowel 3/16 x 7/8 | 8002-028 | | | |

JEHUA

1042 11198

SY 7873

CC416ET2

38 } 340020

38 } 340030

38 } 340030

38 } 340030

38 } 340030

38 } 340030

38 } 340030

38 } 340030

38 } 340030

38 } 340030

WJG 0040 2238

340020 jshw 38

ballcock pt 12 to barrel

WJW 2245 USD

38 } jshw

38 } WJG 140000

38 } WJG

38 } WJG

38 } WJG

38 } WJG

38 } WJG

38 } WJG

38 } WJG

38 } WJG

USD 26070

SLEEVE 35511-081

35511-081

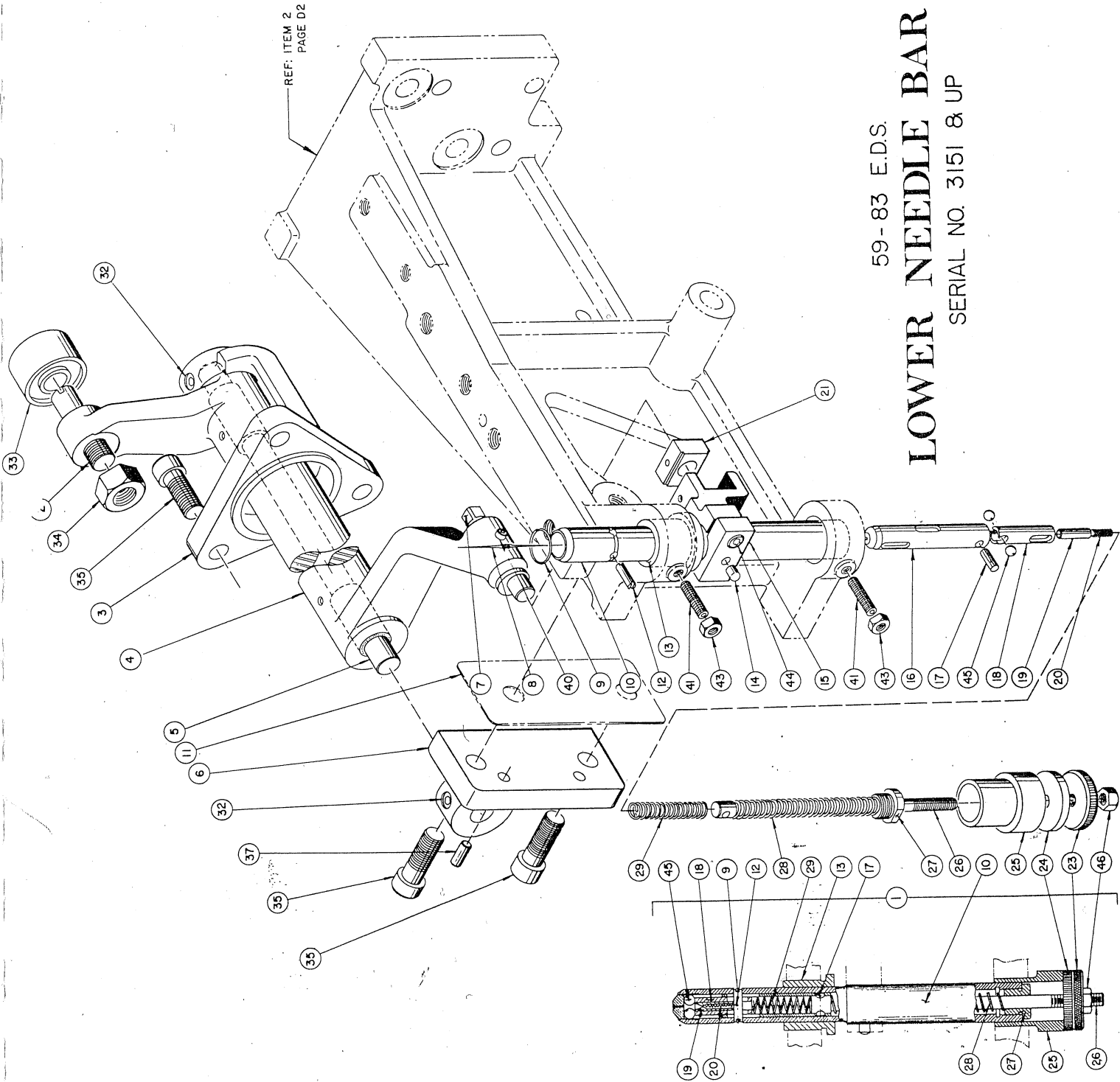
35511-048

123-890

123-910

123-920

59-83 E.D.S.
LOWER NEEDLE BAR ASS'Y.
SERIAL NO. 3151 & UP





AMF Decorative Stitching Machine

APPAREL EQUIPMENT

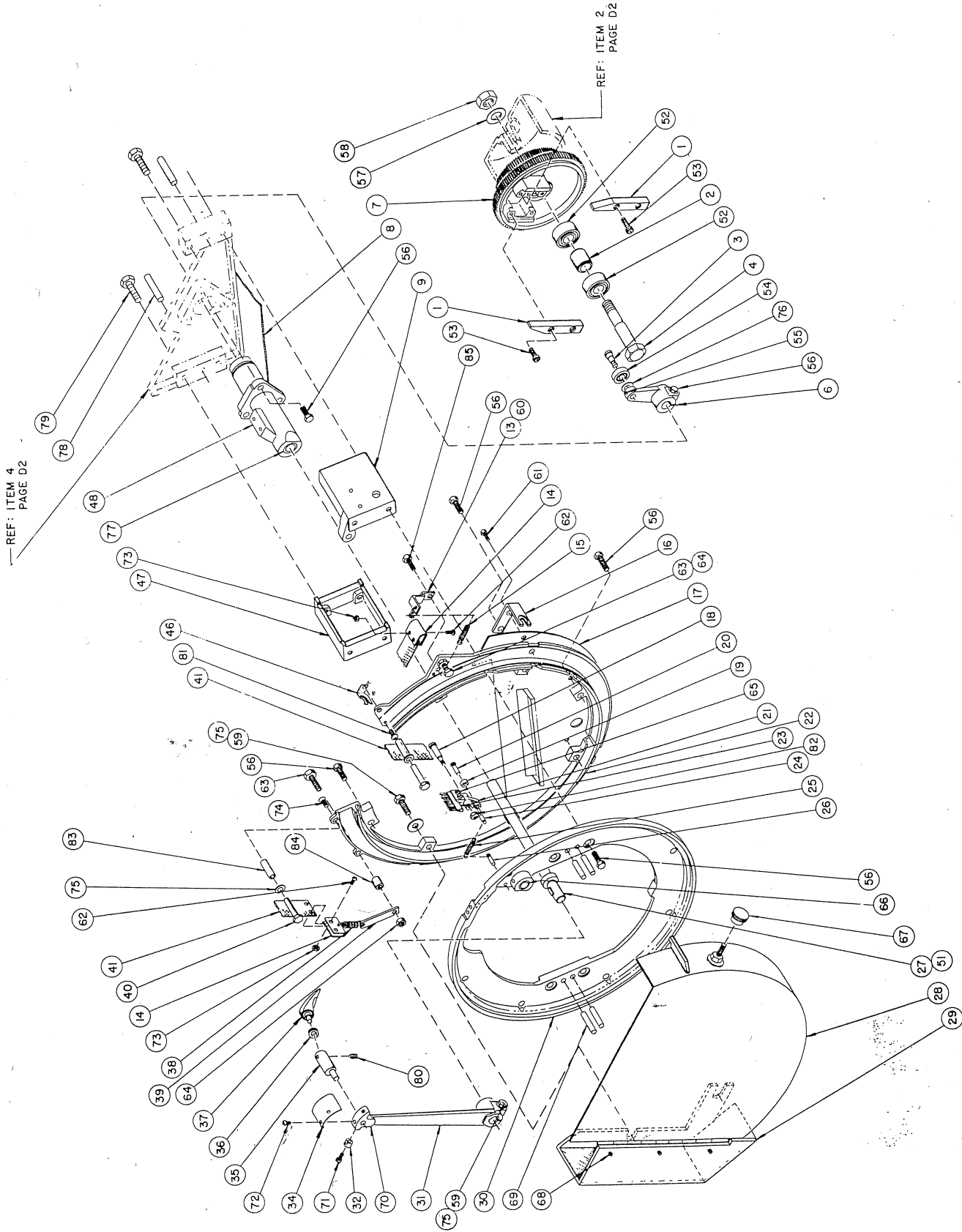
CLASS 59 DIVISION 83

LOWER LOOPER & THREAD DRUM ASSEMBLY D-7 44811-034
Serial No. 3151 & Up

| ITEM NO. | DESCRIPTION | PART NO. | ITEM NO. | DESCRIPTION | PART NO. |
|----------|------------------------|---------------|----------|--|-----------|
| 1 | Drive Gib | (B) 32533-076 | 51 | Key, Hi Pro 1/8 x 5/8 | 9020-002 |
| 2 | Bearing Spacer | (B) 31464-002 | 52 | Bearing, Ball N.D. Z99503 | 23231-235 |
| 3 | Bearing Stud | (B) 31715-005 | 53 | Screw, Hx, Soc. Hd. Cap 1/4-20 x 5/8 | 1000-026 |
| 4 | Gear Stud | (B) 31845-002 | 54 | Bearing, Ball N.D. 77039 | 23231-210 |
| 5 | Arm Crank | (B) 36651-008 | 55 | Screw, Set Hx, Soc. Cup Pt. 1/4-20 x 3/8 | 3100-013 |
| 6 | Arm Crank Drive Gear | (D) 36271-006 | 56 | Screw, Hx, Hd. 5/16-18 x 1.0 | 4200-027 |
| 8 | Crank Guard | (E) 35777-042 | 57 | Washer, Flat 5/8 | 7002-009 |
| 9 | Tie Bracket | (C) 35561-001 | 58 | Nut, Hex 5/8-11 | 6030-014 |
| 10 | | | 59 | Screw, Hx, Hd. 5/16-18 x 1 1/4 | 4200-031 |
| 11 | | | 60 | Hook, "S"-Gerw in Corp. 55-3/4 | 23914-009 |
| 12 | | | 61 | Screw, Binding Hd. 10-32 x 3/8 | 4100-011 |
| 13 | Belt Tightener Arm | (B) 34647-001 | 62 | Screw, Binding Hd. 8-32 x 5/16 | 4100-053 |
| 14 | Belt Spring Fastener | (B) 34111-085 | 63 | Screw, Hx, Hd. 1/4-20 x 1 1/4 | 4202-013 |
| 15 | Thrd. Tightener Sprg. | (B) 36542-017 | 64 | Nut, Hex 1/4-20 | 6000-004 |
| 16 | Lock Clip | (B) 34372-004 | 65 | Screw, Fil. Hd. 5-40 x 3/8 | 4120-005 |
| 17 | R.S. Drum Cover | (B) 35778-014 | 66 | Bearing, "Ollite" FF-707-3 | 23161-073 |
| 18 | Brush Cam Lever Stud | (B) 31718-025 | 67 | Knob, Gray "Dimco" 228/1/4-20 Insert | 22967-076 |
| 19 | Cam Roller | (B) 31413-030 | 68 | Rivets, Steel 4 x 580 (500) | 22914-003 |
| 20 | Roll Stud | (B) 31612-051 | 69 | Pins, Dowel 3/16 x 3/4 | 8000-016 |
| 21 | Brush Holder Cam Lever | (B) 36691-007 | 70 | Insert, Heli-Coil 11852CNX0246 | 21951-001 |
| 22 | Thread Separator | (D) 35633-040 | 71 | Screw, Hx, Soc. Hd. Cap 8-32 x 5/8 | 1002-015 |
| 23 | Thread Brush | (B) 37274-009 | 72 | Screw, Hx, Soc. But. Hd. Cap 8-32 x 1/4 | 1200-011 |
| 24 | Spring Post | (B) 31721-053 | 73 | Nut, Hex Jam 8-32 | 6020-019 |
| 25 | Lever Spring | (B) 36541-006 | 74 | Screw, Flat Hd. 10-32 x 1/2 | 4000-020 |
| 26 | Spring Post | (B) 31721-054 | 75 | Washer, Flat 5/16 | 7012-010 |
| 27 | Loop Arm Shaft | (B) 31781-006 | 76 | Plain Washer, S.Stl. "SDP" 9 x 20-51 | 22912-066 |
| 28 | Drum Cover Assembly | (C) 41831-082 | 77 | Bushing, "Ollite" FF-843-2 | 23161-095 |
| 29 | Rear Drum Guard | (C) 35812-048 | 78 | Pin, Dowel 5/16 x 1 1/4 | 8000-022 |
| 30 | Drum | (D) 35633-041 | 79 | Screw, Cap Hex. Soc. 5/16-18 x 1 1/2 | 4200-051 |
| 31 | Lower Looper Arm | (C) 36653-010 | 80 | Screw, Set Hex. Soc. Cup 10-32 x 1/4 | 3100-012 |
| 32 | Locking Wedge | (B) 31572-004 | 81 | Screw, But. Hd. Hex. Soc. 6-32 x 1/2 | 1200-019 |
| 33 | | | 82 | Nut, Hex. 10-32 | 6000-002 |
| 34 | Belt Support | (B) 34585-001 | 83 | Bearing, "Ollite" AA-401-8 | 23132-075 |
| 35 | Lower Lpr. Hook Extn. | (B) 36518-029 | 84 | Spacer, "RAF" 1223-25-SS-0 | 27511-894 |
| 36 | Lower Lpr. Hook Spacer | (B) 36341-050 | 85 | Screw, Hex. Hd. 1/4-20 x 1/2 | 4200-012 |
| 37 | Lower Hook Assembly | (B) 37211-018 | | | |
| 38 | Take-Up Spring | (B) 36543-019 | | | |
| 39 | Take-Up Spring Lever | (B) 32241-004 | | | |
| 40 | Belt Pulley Stud | (B) 31838-013 | | | |
| 41 | Thread Belt | (B) 36572-009 | | | |
| 42 | | | | | |
| 43 | | | | | |
| 44 | | | | | |
| 45 | | | | | |
| 46 | Assy Separator Guide | (B) 37112-030 | | | |
| 47 | Drum Rear Tie Brkt. | (B) 35371-004 | | | |
| 48 | Hook Arm Bearing | (C) 35541-070 | | | |
| 49 | | | | | |
| 50 | | | | | |

LOWER LOOPER AND THREAD DRUM ASS'Y.

SERIAL NO. 3151 & UP





AMF Decorative Stitching Machine

APPAREL EQUIPMENT

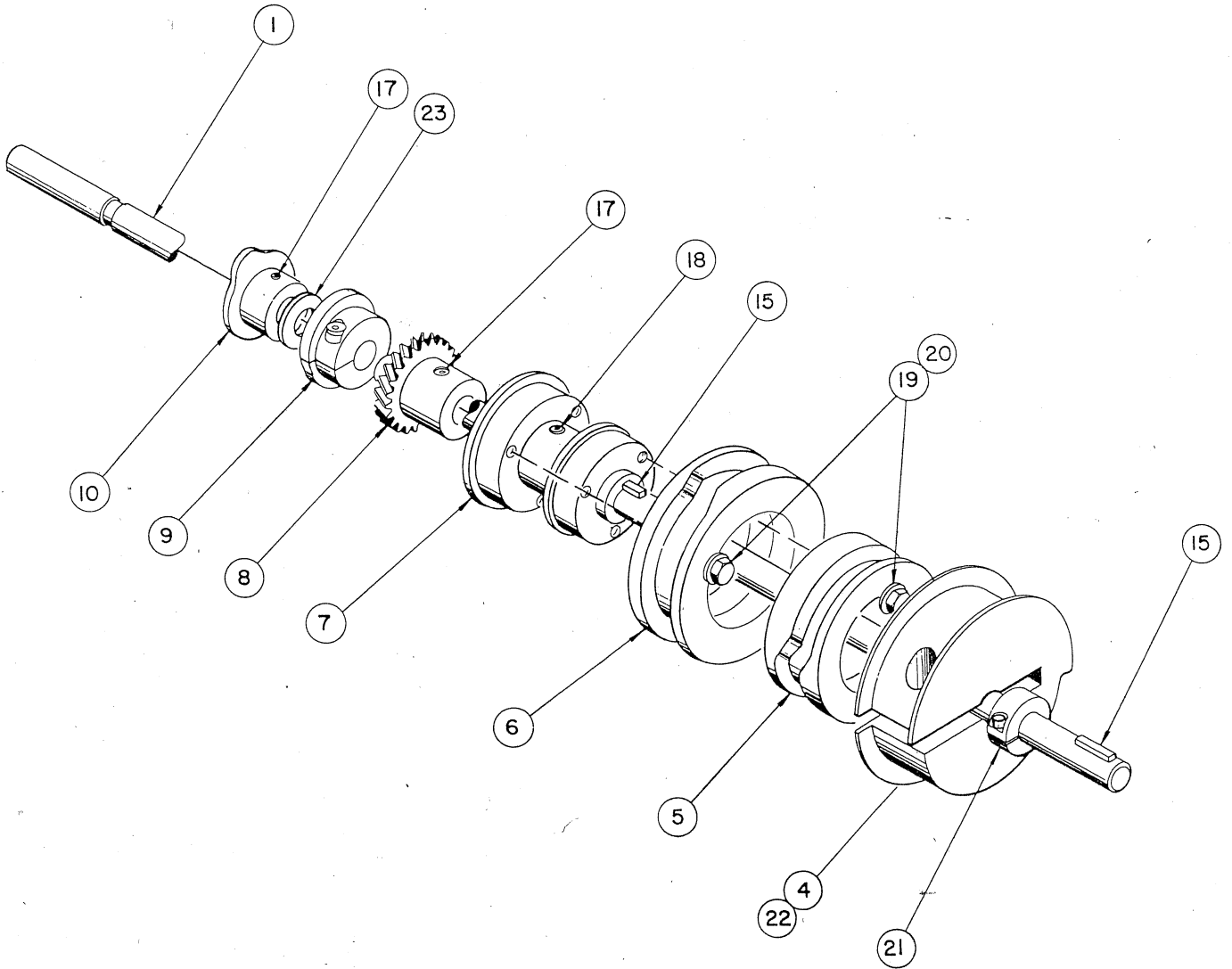
MAIN CAM SHAFT ASSEMBLY D-8 42233-027
Serial No. 3151 & Up

CLASS 59 DIVISION 83

| ITEM NO. | DESCRIPTION | PART NO. |
|----------|--|---------------|
| 1 | Cam Shaft ----- | (C) 31734-013 |
| 2 | | |
| 3 | | |
| 4 | Stitch Control Cam ----- | (B) 36513-086 |
| 5 | Thrd. Lifter Hook Cam ----- | (B) 36513-046 |
| 6 | Thread Clamp Cam ----- | (B) 36516-014 |
| 7 | Clamp Finger Cam Hub ----- | (B) 31751-004 |
| 8 | Tension Finger Drive Gear ----- | (B) 36223-009 |
| 9 | Angle Plate Cam ----- | (B) 36514-046 |
| 10 | Brush Oper. Cam ----- | (C) 36515-033 |
| 11 | | |
| 12 | | |
| 13 | | |
| 14 | | |
| 15 | Key, Hi Pro 1/8 x 5/8----- | 9020-004 |
| 16 | | |
| 17 | Screw,Set Hx.Soc.Cup Pt. 10-32 x 1/4----- | 3100-012 |
| 18 | Screw,Hex.Soc.Cup Pt. 1/4-20 x 1/4----- | 3200-020 |
| 19 | Screw,Mach.Hx.Hd.Cap 10-32 x 3/8 AN3-3A----- <i>04200046</i> | 22911-037 |
| 20 | Washer,Flat 10----- | 7012-001 |
| 21 | Collar,Clamp "Maxwell" 1/2 I.D.(8L)----- | 24117-012 |
| 22 | Screw,Hx.Soc.Hd.Cap 10-32 x 3/4----- | 1000-019 |
| 23 | Shim, Arbor "SDP" 7C8-E16062----- | 22912-058 |

59-83 E.D.S.
**MAIN CAM SHAFT
ASS'Y**

SERIAL NO. 3151 & UP





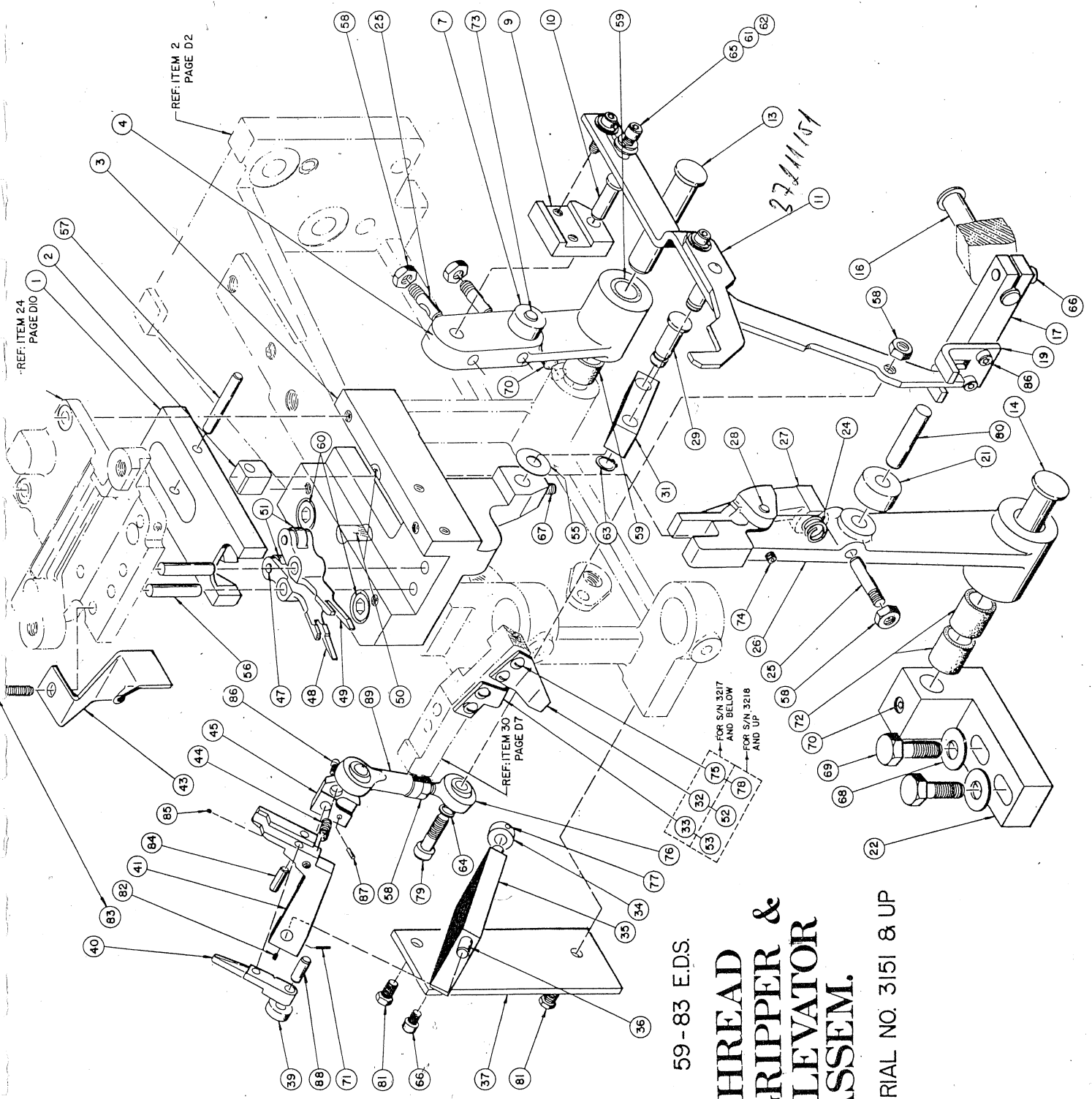
AMF Decorative Stitching Machine

APPAREL EQUIPMENT

THREAD GRIPPER AND ELEVATOR ASSEMBLY D-9 44821-029
Serial No. 3151 & Up

CLASS 59 DIVISION 83

| ITEM NO. | DESCRIPTION | PART NO. | ITEM NO. | DESCRIPTION | PART NO. |
|----------|------------------------------|---------------|----------|--|---------------|
| 1 | Clamp Finger Cam Slide | (B) 33257-001 | 51 | Cam Roller | 31413-029 |
| 2 | Thread Climp.Pivot Block | (B) 32434-001 | 52 | Lower Opener Cam | (B) 34654-019 |
| 3 | Thread Climp.Finger Brkt. | (B) 35551-002 | 53 | Upper Opener Cam | (B) 34546-004 |
| 4 | Thread Lifter Hook Cam Lvr. | (B) 36661-001 | 54 | | |
| 5 | | | 55 | Washer,Thrust,"Oillite" TT400 | 25174-033 |
| 6 | | | 56 | Pin,Dowel 3/16 Dia. x 1 | 8000-044 |
| 7 | Cam Roller | 31413-031 | 57 | Pin,Dowel 5/32 x 1 | 8000-109 |
| 8 | | | 58 | Nut, Hex 10-32 | 6030-007 |
| 9 | Hook Adjust Block | (B) 33244-009 | 59 | Bearing "Oillite" AA-507-13 | 25132-150 |
| 10 | Cam Lever Stud | (B) 31611-010 | 60 | Screw,Hx.Soc.Hd.Cap 5/16-18 x 1 | 1000-047 |
| 11 | Lifter Hook Assembly | (B) 37211-150 | 61 | Washer,Flat 8 | 7012-005 |
| 12 | | | 62 | Washer,Lock Spring 8 | 7102-007 |
| 13 | Cam Lever Stud | (B) 31641-015 | 63 | Ring,Retainer 5100-25(1/4) | 25379-218 |
| 14 | Cam Lever Stud | (B) 31641-019 | 64 | Washer,Lock Spring 10 | 7100-011 |
| 15 | | | 65 | Screw,Hx.Soc.Hd.Cap 8-32 x 3/8 | 1000-002 |
| 16 | Support Brkt.Shaft | (B) 31641-017 | 66 | Screw,Hx.Soc.Hd.Cap 10-32 x 1/2 | 1000-025 |
| 17 | Support Bracket Arm | (B) 32739-011 | 67 | Screw,Set Hx.Soc.Cup Pt. 10-32 x 1/4 | 3100-012 |
| 18 | | | 68 | Washer,Flat 1/4 | 7012-002 |
| 19 | Support Bracket | (B) 34372-002 | 69 | Screw,Hx.Hd. 1/4-20 x 1.0 | 4200-058 |
| 20 | | | 70 | Screw,Set Hx.Soc.Cup Pt. 1/4-20 x 5/16 | 3100-066 |
| 21 | Cam Roller | 31423-068 | 71 | Pin, Expansion 1/16 x 1/2 | 8200-001 |
| 22 | Clamp Pivot Bracket | (B) 36613-038 | 72 | Bearing, "Oillite" AA-521-1 | 25132-142 |
| 23 | | | 73 | Pin,Dowel 7/32 Dia. x 5/8 | 8000-110 |
| 24 | Clamp Finger Lever Spring | (B) 36532-025 | 74 | Screw,Set Hx.Soc.Oval Pt. 8-32 x 3/8 | 3140-003 |
| 25 | Clamp Stud | 31288-023 | 75 | Screw,Truss Hd. 5-40 x 1/4 | 4140-006 |
| 26 | Clamp Finger Lever | (B) 36673-028 | 76 | Rod End Bearing "Heim" HM-3 | 23912-021 |
| 27 | Spring Piece | (B) 36647-001 | 77 | Screw,Set Hx.Soc.Cup Pt. 6-40 x 1/8 | 3100-146 |
| 28 | Piece Pin | (B) 31215-008 | 78 | Screw,But.Hex.Soc. 8-32 x 3/8 | 1200-005 |
| 29 | Thread Hook Lifter Lvr. Stud | (B) 31641-010 | 79 | Screw,Cap Hex.Soc. 10-32 x 5/8 | 1000-021 |
| 30 | | | 80 | Pin,Dowel 1/4 Dia. x 1.0 | 8000-007 |
| 31 | Thread Hook Lifter Lever | (B) 33334-012 | 81 | Screw,Hex.Hd. 10-32 x 1/2 | 4200-057 |
| 32 | Lower Opener Cam | (B) 34654-020 | 82 | Screw,Set Hx.Soc.FI.Pt. 6-40 x 3/16 | 3120-014 |
| 33 | Upper Opener Cam | (B) 34546-019 | 83 | Screw,Hex.Soc.Hd.Cap 1/8 x 1/2 | 1000-001 |
| 34 | Swivel Pin Collar | (B) 31571-003 | 84 | Pin,Harden Dowel 1/8 x 1/2 | 8000-018 |
| 35 | Swivel Bracket | (B) 32716-054 | 85 | Screw,Set Hx.Soc.Cup Pt. 3-48 x 1/8 | 3100-028 |
| 36 | Swivel Pin | (B) 31212-019 | 86 | Screw,Hx.Soc.Hd.Cap 6-40 x 3/8 | 1000-027 |
| 37 | Mounting Plate | (B) 32372-005 | 87 | Pin,Dowel 3/32 x 3/8 | 8000-013 |
| 38 | | | 88 | Pin,Dowel 5/32 Dia. x 3/8 | 8000-111 |
| 39 | Roller | (B) 31413-006 | 89 | Rod End Bearing, "Heim" HF-3 | 23912-024 |
| 40 | Clamp | (B) 36641-013 | | | |
| 41 | Thread Lifter Lever | (C) 36684-001 | | | |
| 42 | | | | | |
| 43 | Lower Loop Sup. & Guard | (B) 35412-030 | | | |
| 44 | Clamp Spring | (B) 36531-017 | | | |
| 45 | Swivel Stud | (B) 35573-004 | | | |
| 46 | | | | | |
| 47 | Roller Pin | (B) 31112-002 | | | |
| 48 | Rear Finger | (B) 36645-004 | | | |
| 49 | Front Finger | (B) 36645-002 | | | |
| 50 | Slide Wick Oiler | (B) 32121-004 | | | |



59-83 E.D.S.
THREAD GRIPPER & ELEVATOR ASSEMBLY.
 SERIAL NO. 3151 & UP



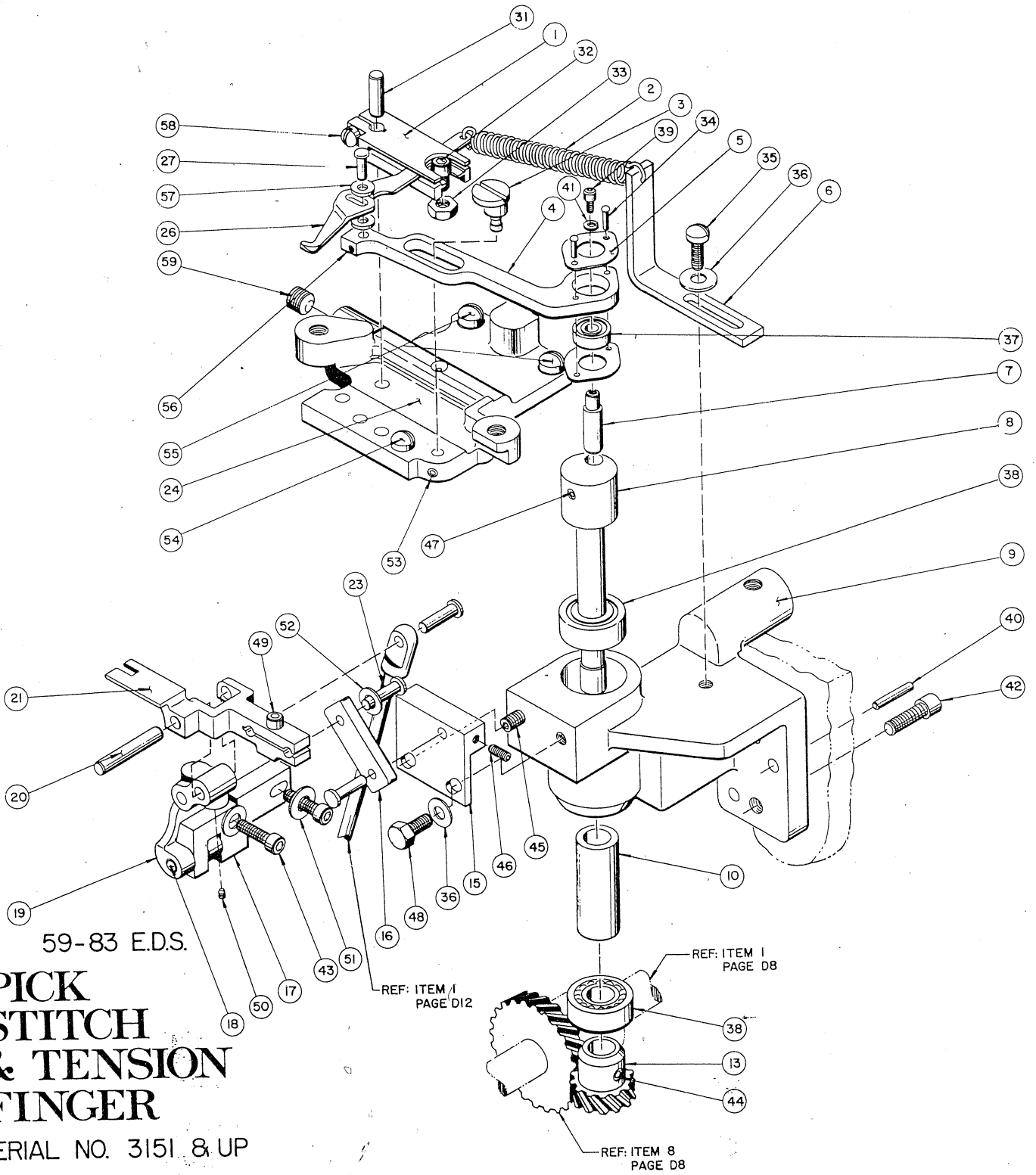
AMF Decorative Stitching Machine

APPAREL EQUIPMENT

CLASS 59 DIVISION 83

PICK STITCH AND TENSION FINGER D-10 42211-008
Serial No. 3151 & Up.

| ITEM NO. | DESCRIPTION | PART NO. | ITEM NO. | DESCRIPTION | PART NO. |
|----------|-------------------------------------|---------------|----------|--|-----------|
| 1 | Support Block | (B) 35511-045 | 38 | Bearing, Ball "NewDep" Z99038 | 23231-226 |
| 2 | Finger Spring | (B) 36542-018 | 39 | Screw, Hex. Soc. Hd. Cap 8-32 x 1/4 | 1000-009 |
| 3 | Stud Eccentric | (B) 36518-027 | 40 | Pin, Dowel 3/16 x 1.0 | 8000-044 |
| 4 | Slide Support | (B) 35526-005 | 41 | Washer, Lock 8 | 7102-007 |
| 5 | Ball Bearing Retainer | (B) 32691-001 | 42 | Screw, Hx. Soc. Hd. Cap 5/16-18 x 1.0 | 1000-047 |
| 6 | Finger Spring Tension Holder | (B) 34372-042 | 43 | Screw, Hex. Soc. Hd. Cap 8-32 x 5/8 | 3100-154 |
| 7 | Support Stud | (B) 31642-005 | 44 | Screw, Set Hx. Soc. Cup Pt. 10-32 x 3/16 | 3102-026 |
| 8 | Eccentric Shaft | (B) 36518-024 | 45 | Screw, Set Hx. Soc. Cup Pt. 10-32 x 1/2 | 3120-001 |
| 9 | Tension Finger Ball Brg. Brkt. | (C) 35542-007 | 46 | Screw, Hx. Soc. Flat Pt. 8-32 x 1/4 | 3100-053 |
| 10 | Bearing Spacer | (B) 31426-015 | 47 | Screw, Set Hex. Soc. Cup 8-32 x 3/8 | 4200-039 |
| 11 | | | 48 | Screw, Hex. Hd. 10-32 x 3/8 | 1000-027 |
| 12 | | | 49 | Screw, Cap Hex. Soc. 6-40 x 3/8 | 3101-038 |
| 13 | Driven Gear | (B) 36221-009 | 50 | Scr, Set Self Lock Knurl Cup 6-40 x 1/4 | 7002-002 |
| 14 | | | 51 | Washer, Flat 8 | 7012-004 |
| 15 | Pusher Plate | (B) 33252-029 | 52 | Washer, Flat 6 | 3100-038 |
| 16 | Link (Pic Stitch) | (B) 32643-073 | 53 | Screw, Set Hx. Soc. Cup 5-40 x 3/16 | 4120-012 |
| 17 | Plate Brkt. Pivot Arm Sup. | (B) 33258-075 | 54 | Screw, Fillister Hd. 8-32 x 5/16 | 4120-001 |
| 18 | Lower Finger | (B) 31721-022 | 55 | Screw, Fillister Hd. 8-32 x 1/2 | 3100-147 |
| 19 | Pivot, Arm | (B) 36677-016 | 56 | Screw, Set Hx. Soc. Cup Pt. 6-40 x 3/16 | 7016-002 |
| 20 | Bracket Pin | (B) 31215-012 | 57 | Washer, Flat (Brass) 5 | 4120-004 |
| 21 | Bender Plate | (C) 36691-021 | 58 | Screw, Fillister Hd. 8-32 x 3/8 | 3100-008 |
| 22 | | | 59 | Screw, Hex. Soc. Cup Pt. 1/4-20 x 1/4 | |
| 23 | 10-6 Cam Roller Stud | (B) 31612-045 | | | |
| 24 | Bracket Cover | (C) 35815-007 | | | |
| 25 | | | | | |
| 26 | Thread Tension Finger | (B) 37211-130 | | | |
| 27 | 10-1 Plain Stud | (B) 31611-064 | | | |
| 28 | | | | | |
| 29 | | | | | |
| 30 | | | | | |
| 31 | Pin, Dowel 3/16 Dia x 5/8 Lg | 8000-015 | | | |
| 32 | Screw, Hx Soc Hd Cap 8-32 x 3/16 | 1000-058 | | | |
| 33 | Nut, Mach. Scr. Hex. 8-32 | 6000-003 | | | |
| 34 | Rivet, Round Hd. (Alum) 1/16 x 5/16 | 8504-001 | | | |
| 35 | Screw, Fillister Hd. 10-32 x 3/8 | 4120-002 | | | |
| 36 | Washer, Flat 10 | 7012-001 | | | |
| 37 | Bearing, Ball "NewDep" 77R3 | 23231-040 | | | |





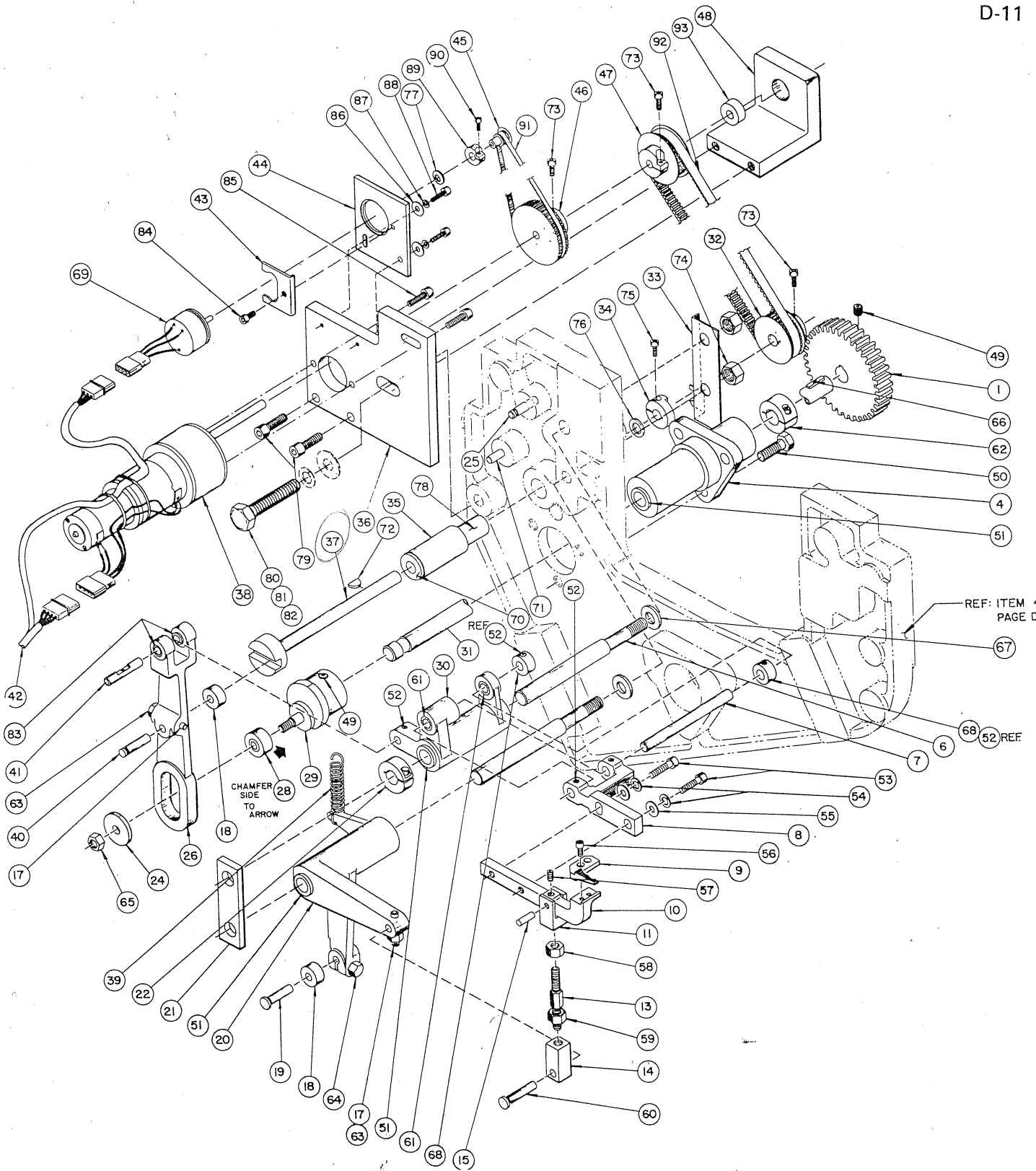
AMF Decorative Stitching Machine

APPAREL EQUIPMENT

MATERIAL FEED D-11 42761-084
Serial No. 3151 & Up

CLASS 59 DIVISION 83

| ITEM NO. | DESCRIPTION | PART NO. | ITEM NO. | DESCRIPTION | PART NO. |
|----------|--|---------------|----------|---|-----------|
| 1 | Mtl. Feed Drive Gear | (B) 36226-011 | 51 | Bushing "Oillite" FF-707-3 | 23161-073 |
| 2 | | | 52 | Screw, Set Hx. Soc. Cup Pt. 8-32 x 1/8 | 3100-051 |
| 3 | | | 53 | Screw, Hx. Soc. Hd. Cap 10-32 x 3/4 | 1000-019 |
| 4 | Mtl. Feed Drive Shaft Brg. | (B) 31881-004 | 54 | Washer, Lock 10 | 7100-011 |
| 5 | | | 55 | Washer, Flat 10 | 7012-001 |
| 6 | Feed Motion Brkt. Shaft | (B) 31773-013 | 56 | Screw, Hx. Soc. Hd. Cap 6-40 x 1/4 | 1000-059 |
| 7 | Mtl. Feed. Arm Suprt. Brkt. | (B) 31217-001 | 57 | Screw, Set Hx. Soc. Cup Pt. 10-32 x 1/4 | 3100-012 |
| 8 | Mtl. Feeder Arm Suprt. Bkt. | (B) 35523-018 | 58 | Nut, Hex Jam 1/4-20 | 6020-004 |
| 9 | Material Feeder | (C) 36611-036 | 59 | Nut, Hex Jam L.H. 1/4-20 | 6020-021 |
| 10 | Material Feeder Arm | (B) 36613-034 | 60 | Stud, Cam Roller 10-6-1A1-67 | 31612-054 |
| 11 | Mtl. Feeder Arm Lift. Fork | (B) 32739-004 | 61 | Bearing, "Oillite" AA-520-8 | 23132-122 |
| 12 | | | 62 | Collar, "Holokrome" 15014 | 24117-012 |
| 13 | Feeder Lifter Rod | (B) 31852-015 | 63 | Nut, Hex 10-32 | 6000-002 |
| 14 | Feeder Lifter Rod Hd. | (B) 32428-002 | 64 | Screw, Hex Hd. 10-32 x 5/8 | 4200-011 |
| 15 | Lifter Fork Pin | (B) 31215-002 | 65 | Nut, Hex 1/4-28 | 6000-005 |
| 16 | | | 66 | Key, Hi-Pro 1/8 x 5/8 | 9020-002 |
| 17 | Clamp Stud | 31288-023 | 67 | Washer, "Reid's" H. Duty FW-3 | 22912-090 |
| 18 | Cam Roller | 31423-068 | 68 | Collar, Set SC31 | 24116-040 |
| 19 | Cam Roller Stud | 31612-052 | 69 | Pot. (Maurey Instrument) 112-P200-502-CON | 28891-028 |
| 20 | Feeder Lifter Bell Crank | (C) 36691-022 | 70 | Bushing "Oillite" FF-607-3 | 23161-048 |
| 21 | Shaft Support Plate | (B) 32225-017 | 71 | Pin, Dowel 3/16 x 1 | 8000-044 |
| 22 | Feed Mtn. Brkt. Shaft Collar | (B) 31511-015 | 72 | Key, "Woodruff" 211 (1/16 x 3/8) | 9000-016 |
| 23 | | | 73 | Screw, Hx. Soc. Hd. Cap 8-32 x 1/2 | 1000-013 |
| 24 | Feed Mtn. Ecc. Stud Washer | (B) 31421-005 | 74 | Nut, Hex 3/8-16 | 6000-014 |
| 25 | Post, Spring | (B) 31721-039 | 75 | Screw, Hx. Soc. Hd. Cap 6-32 x 3/8 | 1000-017 |
| 26 | Feed Eccentric Arm | (C) 36667-012 | 76 | Bearing, Thrust "Rulon" DRT0612-2 | 23181-235 |
| 27 | | | 77 | Washer, Brass 5 | 7016-002 |
| 28 | Feed Motion Cam Roller | (B) 36344-057 | 78 | Bushing "Oillite" AA-507-2 | 23132-155 |
| 29 | Material Feed Cam | (B) 36515-020 | 79 | Screw, Hx. Soc. Hd. Cap 1/4-20 x 3/4 | 1000-008 |
| 30 | Feed Motion Bracket | (B) 36678-019 | 80 | Screw, Hex. Hd. 3/8-16 x 2 | 4200-046 |
| 31 | Mtl. Feed Drive Shaft | (B) 31728-003 | 81 | Washer, Spring Lock 3/8 | 7100-009 |
| 32 | Pulley-Stitch Adj. Shaft Drive | (B) 36343-061 | 82 | Washer, Flat 3/8 | 7012-003 |
| 33 | Limit Stop Plate | (B) 34627-066 | 83 | Bearing, "Oillite" FF-303 | 23161-008 |
| 34 | Slide Block Limit Stop | (B) 36771-079 | 84 | Screw, Hx. Soc. Hd. Cap 8-32 x 3/8 | 1002-014 |
| 35 | Slide Bearing Block | (B) 35225-010 | 85 | Screw, Hx. Soc. Hd. Cap 10-32 x 3/8 | 1000-032 |
| 36 | Motor Plate Stitch Adj. | (C) 32718-032 | 86 | Washer, Flat 8 | 7012-005 |
| 37 | Stitch Adj. Slide Block | (B) 31644-004 | 87 | Washer, Spring Lock 8 | 7100-003 |
| 38 | Motor, Servo-Assy. | (B) 27378-510 | 88 | Screw, Hx. Soc. Hd. Cap 8-32 x 5/8 | 1000-001 |
| 39 | Ext. Spring | (B) 36546-024 | 89 | Collar, Clamp "Holokrome" 15806 | 24117-005 |
| 40 | Cam Roller Pin | (B) 31721-066 | 90 | Screw, Hx. Soc. Hd. Cap 4-40 x 3/8 | 1000-074 |
| 41 | Feed Motion Bracket Pin | (B) 31215-079 | 91 | Belt, "SDP", Timing 666-10212 | 24381-033 |
| 42 | Cable, Motor & Pot. | (B) 46331-015 | 92 | Belt, Timing 140XL025 | 24381-032 |
| 43 | Potentiometer, Hdg. Brkt. | (B) 33255-011 | 93 | Bearing, "Oillite" AA-307-3 | 23132-069 |
| 44 | Potentiometer Brkt. | (B) 32377-121 | | | |
| 45 | Pulley Potentiometer | (B) 36343-062 | | | |
| 46 | Pulley-Stitch Adj. Shaft Dr. | (B) 36343-059 | | | |
| 47 | Pulley-Stitch Adj. Shaft Drive | (B) 36343-060 | | | |
| 48 | Motor Shaft Support | (C) 33231-048 | | | |
| 49 | Screw, Set Hx. Soc. Cup Pt. 1/4-20 x 3/8 | 3100-013 | | | |
| 50 | Screw, Hx. Hd. Cap 5/16-18 x 3/4 | 4200-030 | | | |



59-83 E.D.S.
MATERIAL FEED
SERIAL NO. 3151 & UP



AMF Decorative Stitching Machine

APPAREL EQUIPMENT

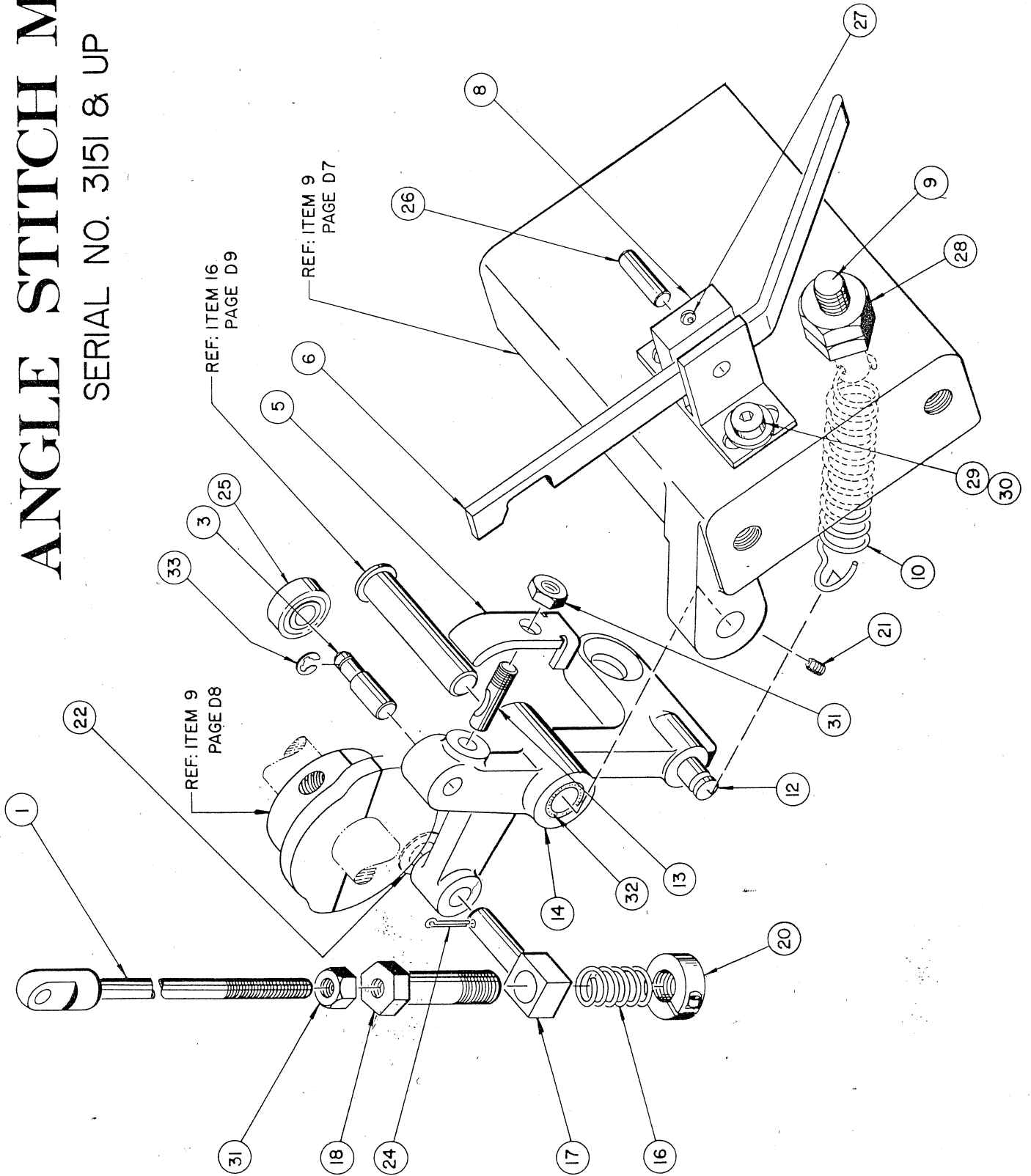
ANGLE STITCH MECH. D-12 44821-030
Serial No. 3151 & Up

CLASS 59 DIVISION 83

| ITEM NO. | DESCRIPTION | PART NO. | ITEM NO. | DESCRIPTION | PART NO. |
|----------|---|---------------|----------|-------------|----------|
| 1 | Bracket Rod ----- | (B) 35111-007 | | | |
| 2 | | | | | |
| 3 | Roller Stud ----- | (B) 31613-007 | | | |
| 4 | | | | | |
| 5 | Locking Latch Clip ----- | (B) 34758-001 | | | |
| 6 | Angle Plate Lock. Latch ----- | (B) 34517-001 | | | |
| 7 | | | | | |
| 8 | Locking Latch Brg. ----- | (B) 32769-003 | | | |
| 9 | Plate Cam Lever Spring Stud ----- | (B) 31283-001 | | | |
| 10 | Stitch Adj. Cam Lever Spring ----- | (B) 36543-022 | | | |
| 11 | | | | | |
| 12 | Spring Post ----- | (B) 31721-038 | | | |
| 13 | Clamp Stud ----- | (B) 31288-023 | | | |
| 14 | Cam Lever ----- | (C) 36674-012 | | | |
| 15 | | | | | |
| 16 | Rod Spring ----- | (B) 36533-015 | | | |
| 17 | Pusher Block ----- | (B) 31873-011 | | | |
| 18 | Adjusting Bushing ----- | (B) 31839-020 | | | |
| 19 | | | | | |
| 20 | Collar, Clamp, Steel 5/16-24 Threaded ----- | 24117-216 | | | |
| 21 | Screw, Set Hex. Soc. Cup 8-32 x 3/16 ----- | 3100-002 | | | |
| 22 | Washer, Flat 1/4 ----- | 7012-002 | | | |
| 23 | | | | | |
| 24 | Pin, Cotter 1/16 x 1/2 ----- | 8322-001 | | | |
| 25 | Bearing, Ball "New Departure" 77R3 ----- | 23231-040 | | | |
| 26 | Pin, Dowel 3/16 x 5/8 ----- | 8000-015 | | | |
| 27 | Screw, Set Hx. Soc. Oval Pt. 10-32 x 5/16 ----- | 3140-005 | | | |
| 28 | Nut, hex Lock 5/16-18 ----- | 6130-002 | | | |
| 29 | Screw, Hex. Soc. Cap 10-32 x 3/8 ----- | 1000-032 | | | |
| 30 | Washer, Flat 10 ----- | 7012-001 | | | |
| 31 | Nut, Hx. Lock 10-32 ----- | 6124-010 | | | |
| 32 | Bushing, Oilite AA-401-1 ----- | 23132-115 | | | |
| 33 | El-Ring, "Truarc" 5133-18 ----- | 25379-272 | | | |

ANGLE STITCH MECH.

SERIAL NO. 3151 & UP





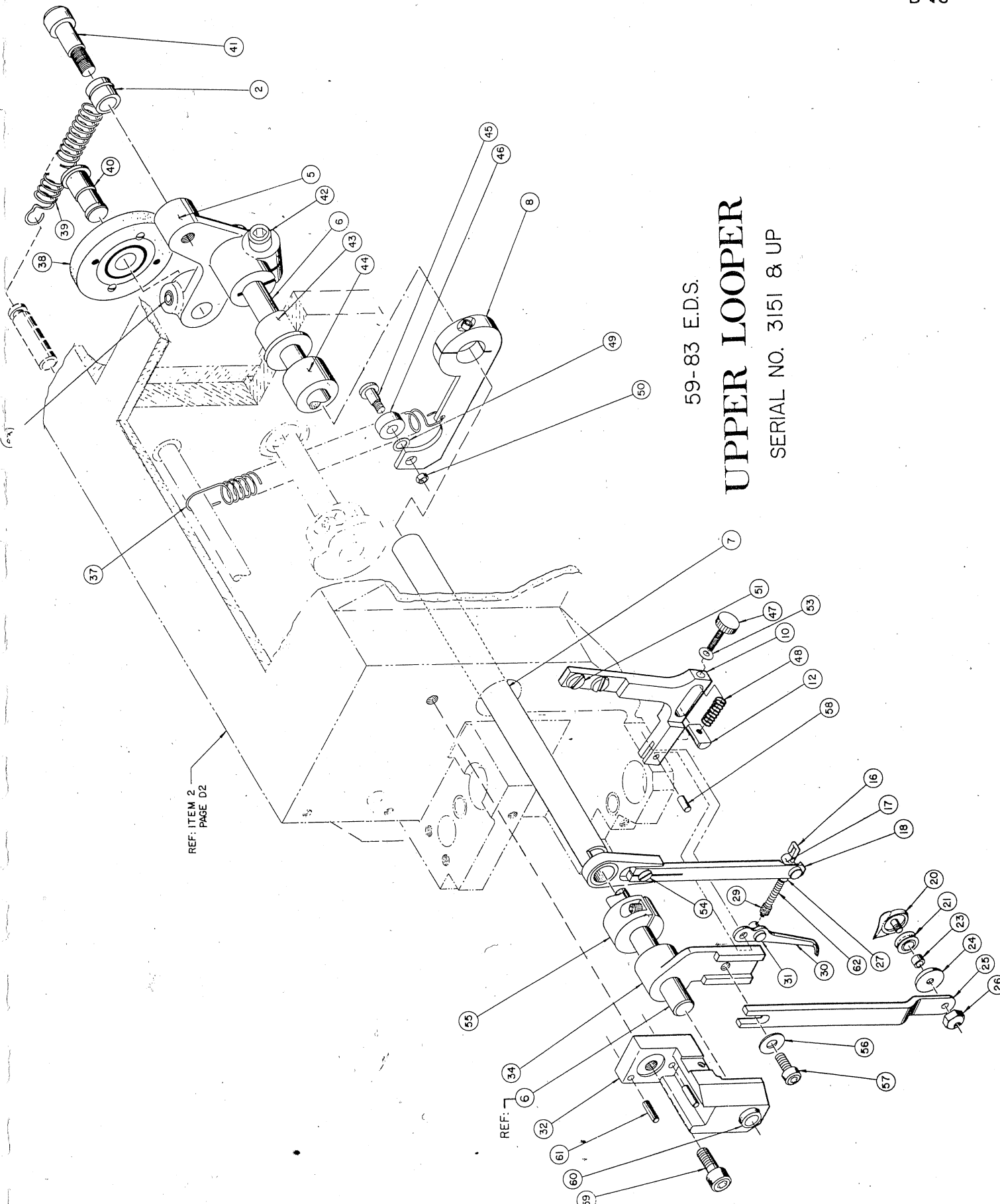
AMF Decorative Stitching Machine

APPAREL EQUIPMENT

UPPER LOOPER D-13 44811-035
Serial No. 3151 & Up

CLASS 59 DIVISION 83

| ITEM NO. | DESCRIPTION | PART NO. | ITEM NO. | DESCRIPTION | PART NO. |
|----------|------------------------------------|---------------|----------|--|---------------|
| 1 | | | 38 | Cam Roller Assembly | (B) 42241-009 |
| 2 | Sleeve | (B) 31722-010 | 39 | Cam Lever Spring | (B) 36546-025 |
| 3 | | | 40 | Cam Roller | (B) 31741-013 |
| 4 | | | 41 | Screw, Shldr, Hex, Soc. 5/16 Dia x 1/2Lg | 01300-127 |
| 5 | Cam Lever | (B) 36691-024 | 42 | Screw, Hx, Soc, Hd, Cap 1/4-20 x 3/4 | 1000-093 |
| 6 | Left Upper Looper Arm Shaft | (B) 31268-001 | 43 | Bearing, "Oillite" FF-607-2 | 23161-044 |
| 7 | Assy, Top Right Looper Shaft | (B) 36761-031 | 44 | Bearing, "Oillite" AA-742-1 | 23132-253 |
| 8 | Assy, Right Upper Looper Cam Lever | (B) 36613-099 | 45 | Screw, Shldr, Hx, Soc, Hd. 1/4 Dia x 1/4Lg | 1300-029 |
| 9 | | | 46 | Bearing, "New Departure" 77R4 | 23231-045 |
| 10 | Finger Support | (B) 33251-105 | 47 | Knurled Knob Scr. "Shearloc" 8-32x1.0 Gy | 22967-033 |
| 11 | | | 48 | Spring, Comp, "Lee" LC-032C-8 | 24971-056 |
| 12 | Arm Stop | (B) 31211-015 | 49 | Washer, Lock Hi Collar 1/4 | 7106-001 |
| 13 | | | 50 | Nut, Flex Loc, Hex 21FK-1024 | 06220-001 |
| 14 | | | 51 | Screw, Binding Hd. 8-32 x 3/8 | 4100-054 |
| 15 | | | 52 | Screw, Hex, Soc, But, Hd. 5-40 | 06220-004 |
| 16 | Pusher Rod | (B) 31955-003 | 53 | Gasket, "Clippard" 11761-2 | 25311-013 |
| 17 | Bearing Stud | (B) 31644-003 | 54 | Screw, Flat Hd. 6-40 x 1/4 | 4030-200 |
| 18 | Pusher Rod Arm | (B) 32542-111 | 55 | Collar, Clamp, "Holochrome" 15010 | 24117-010 |
| 19 | | | 56 | Washer, Flat 8 | 7012-005 |
| 20 | Upper Looper Knife | (B) 37231-028 | 57 | Screw, Hx, Soc, Hd, Cap 8-32 x 3/8 | 1002-014 |
| 21 | Looper Roller | (B) 36341-035 | 58 | Dowel Pin 1/8 Dia x 1/4 | 08000-017 |
| 22 | | | 59 | Screw, Hx, Soc, Hd, Cap 1/4-20 x 1 | 1000-037 |
| 23 | Stud Spacer | (B) 31413-002 | 60 | Bearing, "Oillite" AA516-6 | 23132-165 |
| 24 | Left Looper Roller Seat | (B) 31491-001 | 61 | Pin, Roll 1/8 x 1/2 | 8000-018 |
| 25 | Left Upper Looper Arm | (B) 36625-001 | 62 | Spring, "Lee" LC-018A-8 | 24971-021 |
| 26 | Left Upper Looper Nut | (B) 31815-017 | 63 | Screw, Set Hx, Soc, Oval Pt. 1/4-20 x 1/4 | 3140-006 |
| 27 | Finger Pusher Rod Collar | (B) 31413-001 | | | |
| 28 | | | | | |
| 29 | Adj. Nut | (B) 31593-001 | | | |
| 30 | Right Looper Finger | (C) 37211-045 | | | |
| 31 | Rod Support | (B) 31613-035 | | | |
| 32 | Bearing Bracket | (B) 35521-118 | | | |
| 33 | | | | | |
| 34 | Left Upper Looper Brkt. | (B) 35511-040 | | | |
| 35 | | | | | |
| 36 | | | | | |
| 37 | Spring | (B) 36546-022 | | | |



59-83 E.D.S.
UPPER LOOPER
SERIAL NO. 3151 & UP

REF: ITEM 2
PAGE D2

REF: 6



AMF Decorative Stitching Machine

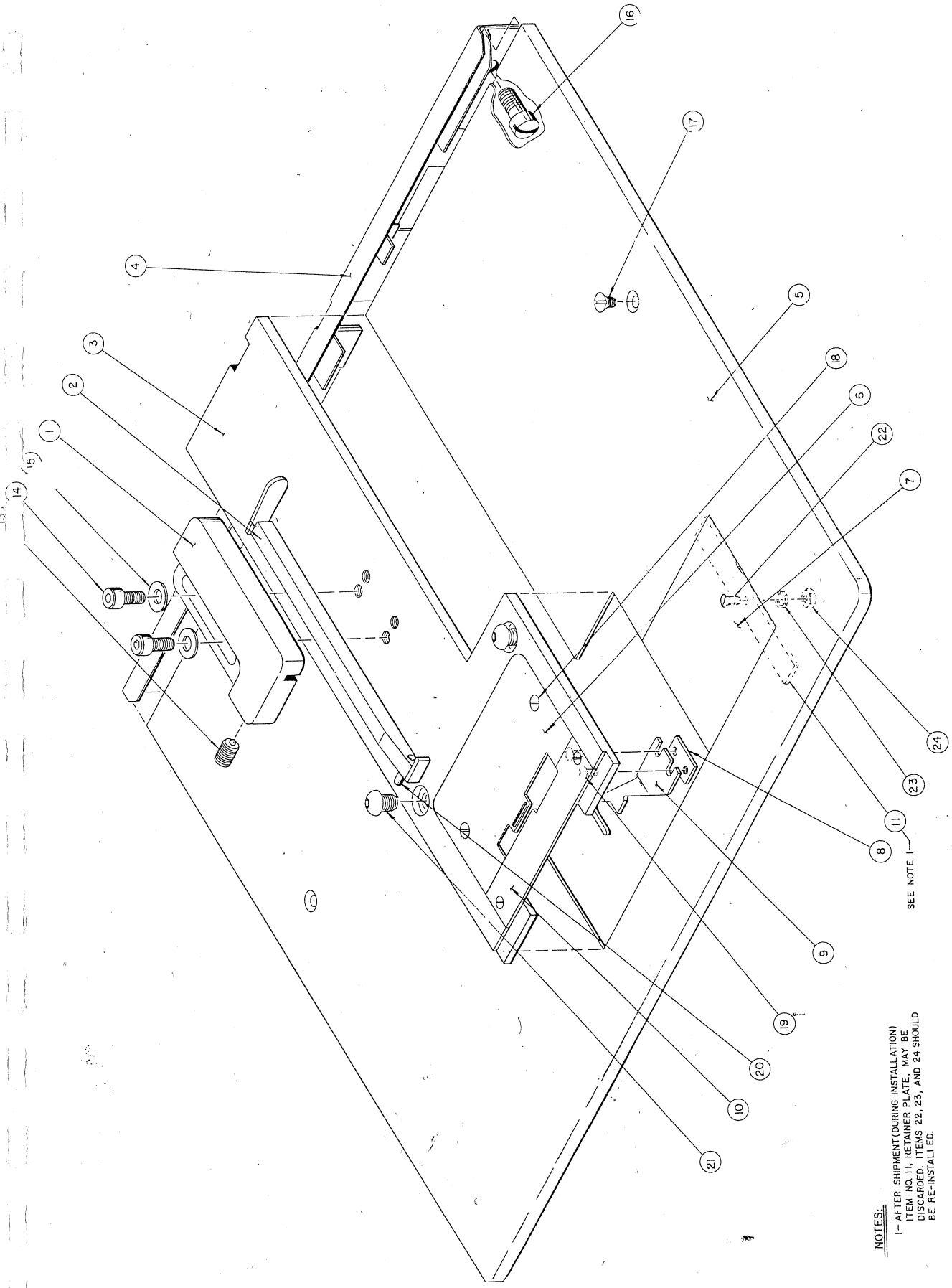
APPAREL EQUIPMENT

MATERIAL GUIDE D-14 44211-105
Serial No. 3151 & Up

CLASS 59 DIVISION 83

| ITEM NO. | DESCRIPTION | PART NO. | ITEM NO. | DESCRIPTION | PART NO. |
|----------|---|---------------|----------|-------------|----------|
| 1 | Slide Material Gage ----- | (B) 36741-023 | | | |
| 2 | Assy Rod Material Gage ----- | (B) 37771-022 | | | |
| 3 | Throat Plate Holder ----- | (C) 33258-076 | | | |
| 4 | Table Rest Assembly ----- | (B) 35421-064 | | | |
| 5 | Metal Table ----- | (D) 35411-109 | | | |
| 6 | Throat Plate ----- | (B) 32764-006 | | | |
| 7 | Assy-Access Plate ----- | (B) 35778-068 | | | |
| 8 | Clamp Strip ----- | (B) 32233-001 | | | |
| 9 | Thread Guide Finger ----- | (B) 37211-133 | | | |
| 10 | Throat Plate Left ----- | (B) 32732-021 | | | |
| 11 | Retainer Plate ----- | (B) 32215-130 | | | |
| 12 | | | | | |
| 13 | Plunger,Ball "Vliet" BL-54N----- | 22966-116 | | | |
| 14 | Screw,Hx.Soc.Hd.Cap 10-32 x 3/8----- | 1000-032 | | | |
| 15 | Washer,Flat 10----- | 7012-001 | | | |
| 16 | Screw,Fillister Hd. 1/4-20 x 1/2----- | 4120-070 | | | |
| 17 | Screw,Flat Hd.(S.Stl.) 8-32 x 1/4----- | 4002-109 | | | |
| 18 | Screw,Flat Hd.(S.Stl.) 5-40 x 1/4----- | 4002-086 | | | |
| 19 | Screw,Flat Hd.(S.Stl.) 5-40 x 5/16----- | 4002-087 | | | |
| 20 | Pin,Roll 3/32 x 3/8----- | 8200-003 | | | |
| 21 | Screw,Hx.Soc.But.Hd. 1/4-20 x 3/8----- | 1200-031 | | | |
| 22 | Screw,Flat Hd.(S.Stl.) 4-40 x 1/2----- | 4002-075 | | | |
| 23 | Washer, Springlock 4----- | 7102-005 | | | |
| 24 | Nut,Hex. 4-40----- | 6020-055 | | | |

= 124.270



59-83 E.D.S.

MATERIAL GUIDE

SERIAL NO. 3151 & UP

NOTES:
1- AFTER SHIPMENT (DURING INSTALLATION)
ITEM NO. 11, RETAINER PLATE, MAY BE
DISCARDED. ITEMS 22, 23, AND 24 SHOULD
BE RE-INSTALLED.

SEE NOTE 1



AMF Decorative Stitching Machine

APPAREL EQUIPMENT

PRESSER FOOT AND SWIVEL TOE MECH. D-15 44241-107
Serial No. 3151 & Up

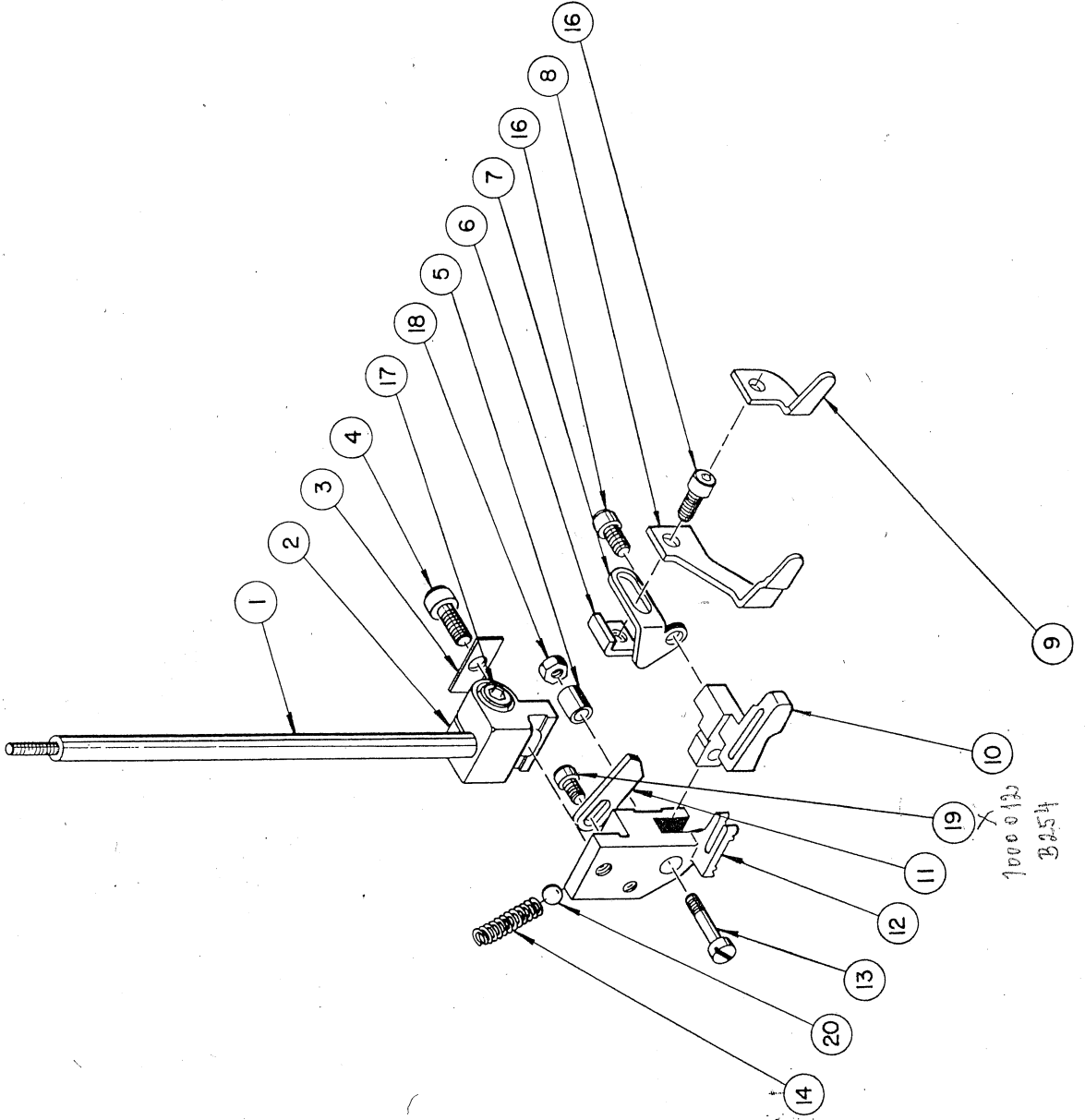
CLASS 59 DIVISION 83

| ITEM NO. | DESCRIPTION | PART NO. | ITEM NO. | DESCRIPTION | PART NO. |
|----------|-------------------------------------|---------------|------------------|-------------|----------|
| 1 | Pressure Foot Shaft | (B) 31772-035 | | | |
| 2 | Toe Holder | (B) 35511-080 | = 121 440 | | |
| 3 | Holder Washer | (B) 32215-003 | = 121 450 | | |
| 4 | Cap Screw | (B) 31687-001 | = 121 480 | | |
| 5 | Pin Sleeve | (B) 31413-003 | = 121 440 | | |
| 6 | Material Guide Nut | (B) 34264-012 | = 121 410 | | |
| 7 | Material Guide Brkt. | (B) 35414-016 | = 121 890 | | |
| 8 | Material Guide | (B) 34658-001 | = 121 400 | | |
| 9 | Material Guide | (B) 34458-002 | = 121 880 | | |
| 10 | Swivel Toe | (C) 35511-079 | = 121 560 | | |
| 11 | Swivel Toe Stop | (B) 32631-001 | = 121 440 | | |
| 12 | Presser Foot | (C) 36615-007 | = 121 350 | | |
| 13 | Hinge Pin | (B) 31685-012 | = 121 460 | | |
| 14 | Plunger Spring | (B) 36531-018 | = 121 450 | | |
| 15 | | | | | |
| 16 | Screw, Hex. Soc. Hd. Cap 5-40 x 1/4 | *1000-004 | = 119 1000 B 254 | | |
| 17 | Screw, Hex. Soc. Hd. Cap 8-32 x 3/8 | 1002-002 | = 119 1000 C 236 | 01000057 | |
| 18 | Nut, Hex 4-48 | 6000-020 | | B 591 | |
| 19 | Screw, Hx. Soc. Hd. Cap 5-40 x 1/4 | *1000-012 | | B 254 | |
| 20 | Ball, Steel 5/32 Dia. | 22965-005 | = 108 520 | | |

59 - J3 E.D.S.

PRESSER FOOT & SWIVEL TOE MECH.

SERIAL NO. 3151 & UP



10000132
32254



AMF Decorative Stitching Machine

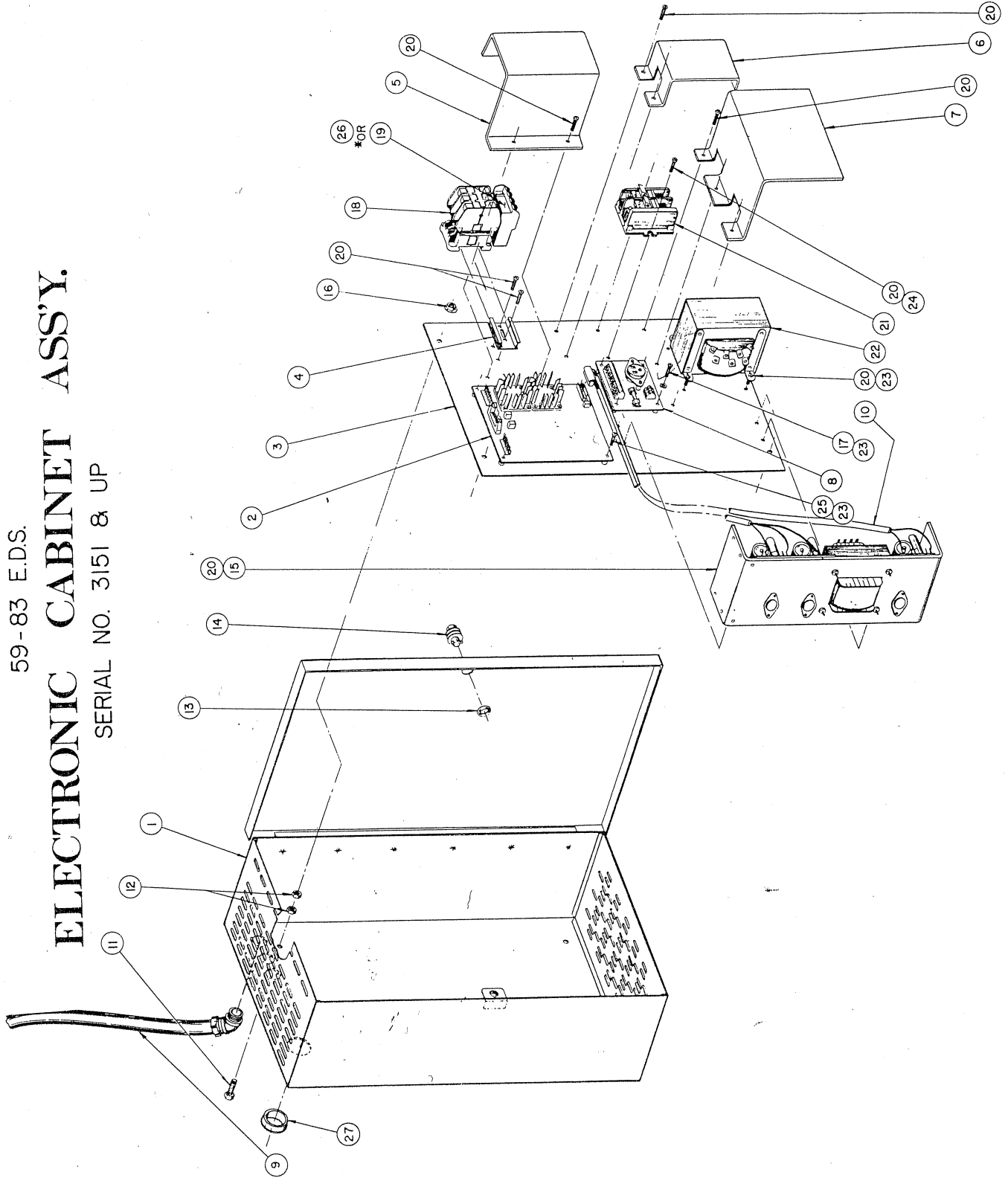
APPAREL EQUIPMENT

ELECTRONIC CABINET ASSEMBLY D-16 46551-436
 Serial No. 3151 & Up

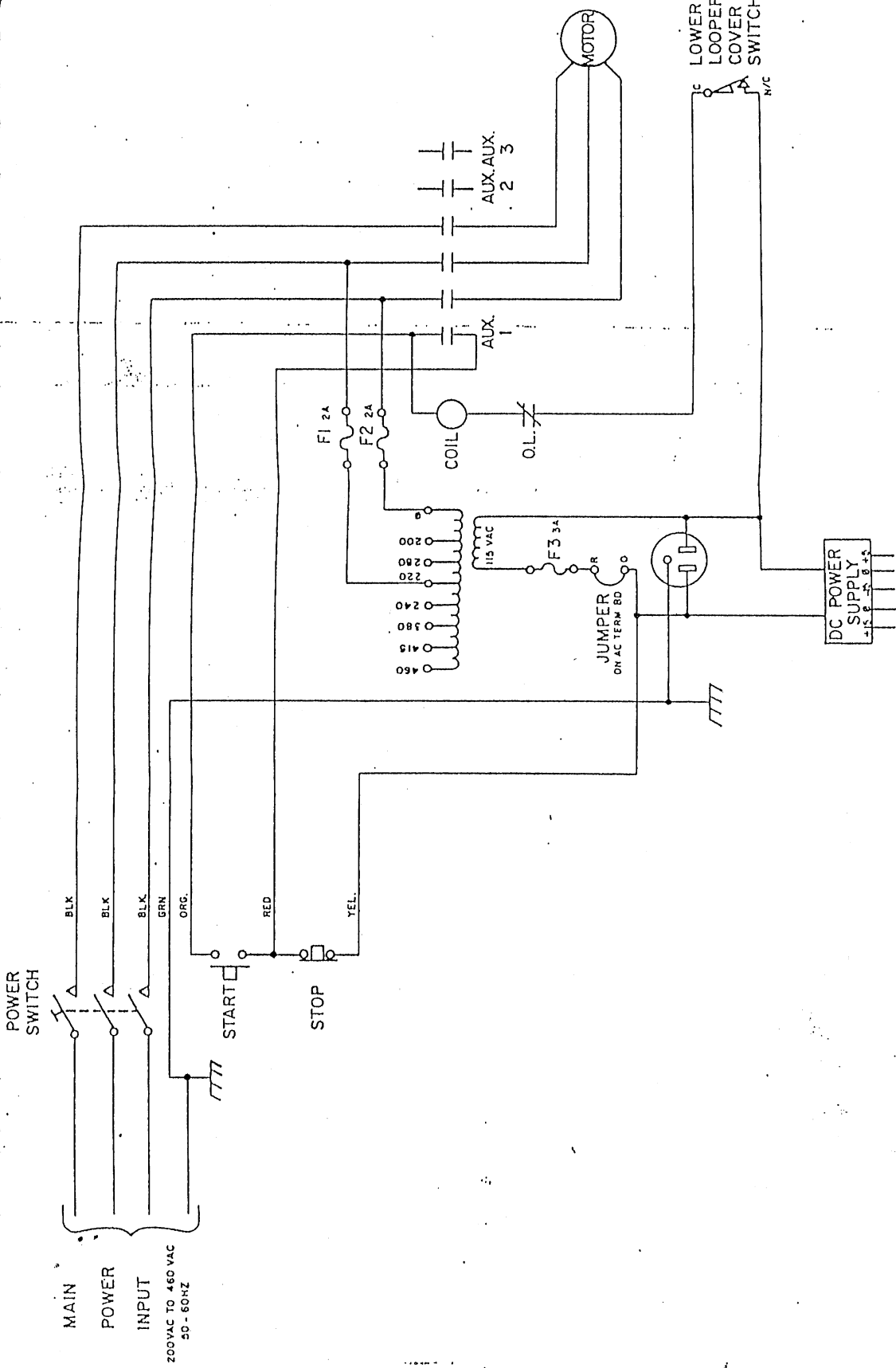
CLASS 59 DIVISION 83

| ITEM NO. | DESCRIPTION | PART NO. | ITEM NO. | DESCRIPTION | PART NO. |
|----------|--|---------------|----------|-------------|----------|
| 1 | Electrical Box ----- | (E) 41651-095 | | | |
| 2 | Logic Board ----- | (B) 37631-080 | | | |
| 3 | Elect. Mounting Panel ----- | (D) 32375-149 | | | |
| 4 | Contacto Bracket ----- | (B) 35421-243 | | | |
| 5 | Cover ----- | (C) 34642-007 | | | |
| 6 | Fuse Cover ----- | (C) 34643-005 | | | |
| 7 | Transformer Cover ----- | (C) 34626-031 | | | |
| 8 | 84-14 A.C. Input Terminal Bd. ----- | (B) 46261-010 | | | |
| 9 | Ass'y Liguatite Cable ----- | (C) 46318-004 | | | |
| 10 | Cable, Power Supply ----- | (B) 46331-013 | | | |
| 11 | Screw, Hex. Hd. 1/4-20 x 1 ----- | 4200-008 | | | |
| 12 | Nut, Hex 1/4-20 ----- | 6000-004 | | | |
| 13 | Retaining Ring "Camloc" 91S45-1-1AA ----- | 25379-033 | | | |
| 14 | Turn Stud Assy "Camloc" 91S-2-11 ----- | 22911-045 | | | |
| 15 | Power Supply "Powerone" HCBB75 ----- | 27123-935 | | | |
| 16 | Nut, Keps 1/4-20 KEPS ----- | 22912-059 | | | |
| 17 | Screw, Phillip Hd. S. Tap 8-32 x 1.0 ----- | 2250-003 | | | |
| 18 | Contacto K12/A215, 110V-60H ----- | 27891-009 | | | |
| 19 | Relay, Thermal Overld. U12/16A2.7-4A ----- | 27393-240 | | | |
| 20 | Screw, Phillip Hd. S.T. 8-32 x 1/2 ----- | 2250-001 | | | |
| 21 | Fuse Block, "Buchanan" 352 ----- | 27818-231 | | | |
| 22 | Transformer, "Micro" CX250MBRDT13 ----- | 27123-760 | | | |
| 23 | Washer, Spring Lock 8 ----- | 7102-007 | | | |
| 24 | End Section, "Buchanan" 330 ----- | 27818-230 | | | |
| 25 | Screw, Slotted Pan Hd. 8-32 x 1 1/4 ----- | 4060-056 | | | |
| 26 | Relay, Thermal Overld U12/16A-8-12 ----- | 27393-241 | | | |
| 27 | Heyco Bushing SB1500-21 ----- | 27511-892 | | | |

59-83 E.D.S.
ELECTRONIC CABINET ASS'Y.
 SERIAL NO. 3151 & UP



*ALL SINGLE PHASE MACHINES SUBSTITUTE
 ITEM NO. 26 FOR ITEM NO. 19.



| | | | | | | | | | | | | | | | | | | | | | |
|---------------------|--|--|--|--------------|--|------------------|--|------------------|--|------------------|--|-----------------|--|-------|--|-----|--|----|--|-------------|--|
| NOTE | | DIMENSIONS UNLESS OTHERWISE SPECIFIED ARE IN INCHES PLUS OR MINUS .015 | | DRAWING DATE | | DRAWN BY | | CHECKED BY | | APPROVED BY | | PART NAME | | CLASS | | DWG | | NO | | DESCRIPTION | |
| ✓ | | A. C. SCHEMATIC | | E 49965-194 | | H. J. B. 11-3-52 | | H. J. B. 11-3-52 | | H. J. B. 11-3-52 | | A. C. SCHEMATIC | | 59 | | 83 | | C | | D17 | |
| APPLIED ENGINEERING | | A. C. SCHEMATIC | | E 49965-194 | | H. J. B. 11-3-52 | | H. J. B. 11-3-52 | | H. J. B. 11-3-52 | | A. C. SCHEMATIC | | 59 | | 83 | | C | | D17 | |
| APPLIED ENGINEERING | | A. C. SCHEMATIC | | E 49965-194 | | H. J. B. 11-3-52 | | H. J. B. 11-3-52 | | H. J. B. 11-3-52 | | A. C. SCHEMATIC | | 59 | | 83 | | C | | D17 | |

Turn centering sleeve (32) onto the clutch shaft (8) until it bottoms, Figure 6. The centering sleeve is supplied with every replacement shipment of discs. This sleeve is necessary to protect the shaft bearing and for correct adjustment of the clutch air gap "A".

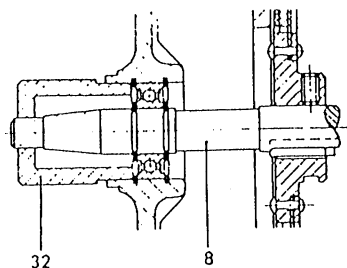


Figure 6.

Remove all 4 screws (16) and (17). Take off clutch housing, Figure 5.

Remove brake access plate from clutch housing.

Remove 3 screws (19), loosen cable clamp (20) and remove clutch magnet (7).

CAUTION

When removing, be careful not to damage the power leads to the clutch and brake.

Remove bearing (21) and retaining ring (22).

Loosen two set screws (24) in the hub (23) of the clutch disc and pull clutch disc from the shaft with a puller.

Remove brake disc in the same manner as the clutch disc.

Put new brake disc onto the clutch shaft and push it toward the brake magnet (12) until its linings touch lightly onto the brake surface of the brake magnet.

CAUTION

When mounting either the clutch or brake discs, do not apply any pressure on the outer ring so as not to damage the spring action. Apply any pressure necessary onto the hub only.

Tighten both set screws in the hub (26).

Place new clutch disc onto clutch shaft and push it toward the brake disc until the hubs touch lightly.

CAUTION

Exert any pressure necessary on the hub only, not on the outer ring as that could damage the spring action of the disc.

TELEDYNE AMCO

Do not tighten the set screws of the clutch disc (24). Pull up on the set screws very lightly so that the disc does not drift on the shaft.

Fasten the clutch magnet (7) with all three set screws (19) in the clutch housing. Pull the clutch and brake leads out very carefully again.

Tighten cable clamp (20), securing leads to the housing.

Now slide the clutch disc to the rear in the direction of the clutch magnet.

CAUTION

Move by applying pressure to hub only of the clutch disc. Set air gap "A" between the clutch disc and the clutch magnet housing at exactly 0.8mm (.031 inches) using a feeler gauge. The disc must be set so there is no deflection of the disc when inserting the feeler gauge. Check setting by inserting a 0.9mm (.035 inches) feeler between the disc and the clutch magnet. A deflection of the clutch disc should then be noticed.

The above adjustments are made by inserting the feeler gauge through the access opening of the clutch housing.

Tighten set screws (24) in the hub of the clutch disc.

Replace retaining ring (22) and ball bearing (21) on clutch shaft (8).

Remove the fan cover from the back end of the motor.

Insert a 5mm (.196 inches) round pin into one of the holes in the rear bearing setting sleeve (27).

Turn setting sleeve (27) one full revolution in the direction of arrow "Y" in Figure 5. There are 6 holes in the sleeve. Therefore, it is necessary to use the pin 6 times to obtain one full revolution.

Remove the centering sleeve (32) Figure 6. from clutch shaft.

Remount the clutch onto the motor.

CAUTION

Ensure that the compression springs and the "O" ring are replaced in the flywheel of the motor before inserting the bearing.

Secure clutch to motor and control box using all 4 screws (16) and (17). Replace the plugs for the clutch, synchronizer, etc., into the control box.

Checking the clutch and brake air gaps is done as follows:

ADJUSTMENTS

Brake Adjustment

Checking the Brake Air Gap. The brake air gap "C", Figure 5, should be set so that there is a very slight engagement of the brake disc against the brake housing with the power turned off. Check as follows: Remove the "V" Belt, turn shaft by means of the round nut only (not the pulley). In this condition, the clutch shaft should be easily rotatable having a slight drag between the brake friction material and the brake housing. If the shaft turns completely free with no drag, the brake air gap "C" is too large and must be reset as follows:

Adjustment of the Brake Air Gap (with the entire clutch mounted, the pulley removed and the round nut screwed on) is done in the following sequence:

Loosen both set screws (25) in brake disc (26) through the access opening in the clutch housing, Figure 5, using the 3mm allen wrench supplied with the motor.

If the brake is too tightly adjusted put the tip of a screwdriver onto hub (26) in the direction of arrow "B". Introduce the screwdriver through the air openings of the clutch shaft. Tap lightly on the screwdriver pushing back the brake disc and turning the clutch shaft simultaneously until the brake runs free as described under Brake Adjustment.

If the brake is too loosely adjusted (air gap "C" between brake linings and brake magnet too large), place the tip of a screwdriver through the access opening of the clutch housing between the hubs of the clutch and brake disc (26) and (23) respectively. By then twisting the screwdriver slightly, the brake disc can be moved toward the brake magnet. Adjust as described under Brake Adjustment.

CAUTION

Exercise care not to damage brake or clutch disc while adjusting.

Tighten both set screws (25) in hub (26). Check brake air gap again in accordance with Brake Adjustment.

Remove round nut from clutch shaft. Insert spring washer. Mount pulley and secure with round nut.

Clutch Air Gap Adjustment

A setting sleeve (27) is installed on the rotor shaft between the motor fan and the rear end bell. The purpose of this sleeve is for setting the internal clutch air gap "A", Figure 5. This is done by moving the entire assembly of the flywheel, rotor and bearings within the end bells until the proper setting is obtained.

By turning clockwise (direction of arrow "Z"), the clutch air gap is reduced and by turning counter-clockwise (direction of arrow "Y"), the air gap is increased.

Proceed as Follows for Adjustment

With the power off and the fan cover in place, access to the setting sleeve is through the rear lateral cover in the fan guard. Insert a round steel pin, approximately 4mm (.156"), into one of the six holes in the setting sleeve (27). While turning the motor pulley by hand, also turn the setting sleeve in the direction "Z" until the motor fan just begins to turn with the motor pulley. This is done by moving the pin one hole at a time until the proper contact with the fan is made.

Now turn the setting sleeve (27) in the reverse direction (direction of arrow "Y") by two-third's (2/3) of a hole position. (NOTE: this is the same as backing up in a counter-clockwise direction by two-third's (2/3) of a window length.)

Motor is now completely adjusted. There are no set screws to be tightened at this point. Replace access plates and attach V-belt.

Proper motor operation is dependent upon proper setting of both clutch and brake. Should either require replacement, insure adjustments are correct before proceeding.

CAUTION

By turning the setting sleeve too far in the "Z" direction will cause a deflection of the clutch disc springs by the flywheel. This will damage the clutch disc.

By turning the setting sleeve too far in "Y" direction, the following faults might occur.

- a. If the setting sleeve has been set back to a point where the air gap "A" is close to zero, the metallic ring of the clutch disc will come in contact with the clutch magnet housing when operating. This will eventually cause sparks and will result in the clutch disc overheating. Thus in a short time the springs of the clutch will overheat causing them to lose their spring action. The motor will also be operating with a noisy metallic sound.

- b. If the setting sleeve has been set back to a point where the air gap "A" is less than zero, when operating, the metal ring of the clutch disc will come into positive contact with the clutch magnet and cause the motor to lockup. Then either the fuses will be blown or the motor winding might burn out.

TABLE II
MOTOR AND HANDWHEEL SPEED CHART

| MOTOR PULLEY | | | 1700 RPM MOTOR | | | | | | 3400 RPM MOTOR | | | | | |
|--------------|---------------------|-----------------------|-------------------------------------|-------|-------|-------|-------|-------|-------------------------------------|-------|-------|-------|-------|-------|
| | | | HANDWHEEL PULLEY SIZE IN INCHES/RPM | | | | | | HANDWHEEL PULLEY SIZE IN INCHES/RPM | | | | | |
| mm Size | Approx. Equiv. Inch | Motor Pulley Part No. | 2 | 2-1/8 | 2-1/4 | 2-1/2 | 2-3/4 | 3-1/2 | 2 | 2-1/8 | 2-1/4 | 2-1/2 | 2-3/4 | 3-1/2 |
| 53 | 2-1/2 | 0-23/3 | 2125 | 2000 | 1890 | 1700 | 1550 | 1200 | 4250 | 4000 | 3780 | 3400 | 3100 | 2400 |
| 67 | 2-5/8 | 0-86/2 | 2230 | 2100 | 1980 | 1780 | 1620 | 1275 | 4460 | 4200 | 3980 | 3580 | 3240 | 2550 |
| 71 | 2-13/16 | 0-24/2 | 2390 | 2250 | 2125 | 1910 | 1740 | 1365 | 4780 | 4500 | 4230 | 3820 | 3480 | 2730 |
| 75 | 2-15/16 | 0-87/2 | 2500 | 2350 | 2220 | 2000 | 1815 | 1425 | 5000 | 4700 | 4440 | 4000 | 3630 | 2850 |
| 80 | 3-1/8 | 0-25/2 | 2560 | 2500 | 2360 | 2125 | 1930 | 1510 | 5320 | 5000 | 4720 | 4250 | 3860 | 3020 |
| 85 | 3-5/16 | 0-88/2 | 2815 | 2650 | 2500 | 2250 | 2050 | 1600 | 5630 | 5300 | 5000 | 4500 | 4100 | 3200 |
| 90 | 3-9/16 | 0-26/2 | 3025 | 2850 | 2690 | 2420 | 2200 | 1730 | 6050 | 5700 | 5380 | 4840 | 4400 | 3460 |
| 95 | 3-3/4 | 0-89/2 | 3185 | 3000 | 2830 | 2550 | 2310 | 1820 | 6370 | 6000 | 5660 | 5100 | 4620 | 3640 |
| 100 | 3-15/16 | 0-27/2 | 3350 | 3150 | 2975 | 2675 | 2430 | 1910 | 6700 | 6300 | 5950 | 5350 | 4860 | 3820 |
| 106 | 4-3/16 | 0-90/2 | 3560 | 3350 | 3160 | 2850 | 2590 | 2030 | 7120 | 6700 | 6320 | 5700 | 5180 | 4060 |
| 112 | 4-7/16 | 0-28/2 | --- | 3550 | 3350 | 3015 | 2740 | 2150 | 7540 | 7100 | 6700 | 6030 | 5480 | 4300 |
| 118 | 4-5/8 | 0-91/2 | --- | --- | 3490 | 3145 | 2860 | 2245 | --- | 7400 | 6980 | 6290 | 5720 | 4490 |
| 125 | 4-15/16 | 0-29/2 | --- | --- | --- | 3355 | 3050 | 2400 | --- | --- | 7460 | 6710 | 6100 | 4800 |
| 132 | 5-3/16 | 0-371/1 | --- | --- | --- | 3525 | 3200 | 2520 | --- | --- | --- | 7050 | 6400 | 5040 |
| 140 | 5-1/2 | 0-126/2 | --- | --- | --- | --- | 3400 | 2670 | --- | --- | --- | 7480 | 6800 | 5340 |

TELEDYNE AMCO

TROUBLESHOOTING

| PROBLEM | PROBABLE CAUSE | CORRECTIVE ACTION |
|---|---|--|
| Motor does not start when turning main switch on. | Power supply cord (plug, protection switch) not properly connected. | Correct connection in accordance with service manual. |
| | Power supply cord (plug, cord, protection switch) defective. | Replace defective parts. |
| | Fuse-tron blown. | Replace fuses. |
| Motor runs, but when activating sewing machine pedal, the machine does not start. | Plug for synchronizer or clutch brake not inserted. | Plug in. |
| | Plug for synchronizer or clutch, or clutch cord defective, connection in plug for clutch interrupted. | Replace defective parts or repair connections respectively. |
| | In machines with safety switches avoid a hazardous running of the machine: switch not correctly actuated (e.g. after tilting the machine head switch not fully engaged) or defective, cord to switch interrupted. | Check switch for correct function, replace switch or cord if necessary. |
| | In automatic units: synchronizer, plug or cord defective connection interrupted. | Replace defective parts or repair connections respectively. |
| | Control box at motor terminal improperly connected. | Correct connections in accordance with service manual. |
| | Fuses or circuit breaker in control box open. | Check fuse or circuit breaker in control box. |
| | Clutch and/or brake air gap too narrow, or after a long time of use clutch lining worn down or defective. | Adjust air gaps in accordance with service manual, if necessary, replace clutch and brake discs. |

| PROBLEM | POSSIBLE CAUSE | CORRECTIVE ACTION |
|---|---|---|
| Motor runs, but when activating sewing machine pedal, the machine does not start. (Continued) | Control box defective. | Replace control box. |
| Motor and machine run, but the needle does not go to its upper position or the machine will not start to run again. | Control discs in synchronizer incorrectly adjusted. | Adjust control discs correctly in accordance with VARIOSTOP control type Instruction Booklet. |
| | Sewing machine pedal is jammed or is improperly adjusted. | Repair pedal or adjust it correctly. |
| | In machines with safety switch at thread trimmer or other additional devices; switch not correctly actuated or defective, cord to switch interrupted. | Check switch for correct function and actuation, if necessary, replace switch, actuating means or cord. |
| | In automatic units, synchronizer, plug or cord defective, connection interrupted. | Replace defective parts or repair connections. |
| | Synchronizer defective. | Replace synchronizer. |
| | Control box defective. | Replace control box. |
| Repeated cut-off of motor protection switch. | Values of fuse-tron too low. | Use fuse-tron with values conforming to service manual. |
| | Switch defective. | Replace switch. |
| | Cord connection between protection switch and motor too weak or defective. | Replace cord. |
| | Motor winding at terminal incorrectly connected. | Correct connection in accordance with service manual. |

| PROBLEM | PROBABLE CAUSE | CORRECTIVE ACTION |
|---|---|--|
| Repeated cut-off of motor protection switch. (Continued) | Machine or devices (e.g. thread trimmer) binding or seized. | Repair machine and/or devices. |
| | Brake air gap too narrow. | Adjust air gap in accordance with service manual. |
| | Motor winding defective. | Have motor repaired by manufacturer. |
| Motor decreases speed considerably or stops entirely. | Voltage too low. | Have power supply checked. |
| | Machine or devices (e.g. thread trimmer) binding or seized. | Repair machine or devices. |
| | Brake and/or clutch air gap too narrow or after an extended period of use clutch lining worn down or defective. | Adjust air gaps in accordance with service manual. If necessary, replace brake and clutch disc. |
| | Power rating of motor too low for particular operation. | Exchange motor for another with higher power rating. |
| | Control box defective. | Replace control box. |
| Motor overheats. | Air screen filter filled with lint. Less frequently, air channels within motor and clutch filled with lint. | Clean filter, if necessary, take off clutch in accordance with service manual. Clean air channels in motor and clutch. |
| | Machine or devices (e.g. thread trimmer) binding or seized. | Repair machine or devices. |
| | Brake air gap too narrow. | Adjust brake air gap in accordance with service manual. |

| PROBLEM | PROBABLE CAUSE | CORRECTIVE ACTION |
|--|---|---|
| <p>Machine starts to run after turning on main switch without pedal (start button in automatic units) having been actuated. Stop is only possible by turning switch off.</p> | <p>Machine pedal is jammed or actuates by own weight.</p> | <p>Replace or repair pedal.</p> |
| | <p>Clutch air gap too narrow.</p> | <p>Adjust clutch air gap according to service manual.</p> |
| | <p>Clutch bearing defective. NOTE: The bearing is defective when, after correct clutch adjustment, turning by hand causes clutch to turn.</p> | <p>Repair clutch using original spare parts.</p> |
| | <p>Control box defective. NOTE: Detach clutch plug from control box. Control box is only defective when machine stops.</p> | <p>Replace control box.</p> |
| <p>Machine runs at first actuation at full speed. Stop only possible by switching off.</p> | <p>In older designs: Plug of synchronizer not inserted in control box.</p> | <p>Plug in synchronizer.</p> |
| | <p>In automatic units: Defective synchronizer, plug or cord.</p> | <p>Replace synchronizer.</p> |
| | <p>Cord of synchronizer torn off, connection in synchronizer or plug broken.</p> | <p>Repair cord or connections.</p> |
| | <p>Synchronizer defective.</p> | <p>Replace synchronizer.</p> |
| | <p>Control box defective. NOTE: Control box is defective when exchange of synchronizer is no remedy.</p> | <p>Replace control box.</p> |

| PROBLEM | PROBABLE CAUSE | CORRECTIVE ACTION |
|---|---|---|
| <p>Machine stops irregularly or continues running at positioning speed after stop signal is given. Stop only possible by switching off.</p> | <p>Hub of synchronizer insecurely fixed on machine shaft.</p> | <p>Fix hub in accordance with service manual.</p> |
| | <p>Tension of V-belt not taut enough. V-belt slips.</p> | <p>Correct tension in accordance with service manual.</p> |
| | <p>Ambient temperature at synchronizer too low (below + 10°C) or too high (above + 50°C).</p> | <p>Check ambient temperature.</p> |
| | <p>Machine pedal is jammed or actuates by own weight.</p> | <p>Repair or replace pedal.</p> |
| | <p>In automatic units: Start button, selection switch or regulating means in main control of machine defective.</p> | <p>Replace defective parts.</p> |
| | <p>Positioning speed (speed of machine shaft on which synchronizer is mounted) too high.</p> | <p>Adjust correct positioning speed according to VARIO-STOP control type Instruction Booklet.</p> |
| | <p>Synchronizer defective.</p> | <p>Replace synchronizer.</p> |
| | <p>Control box defective. NOTE: Control box is only defective when by adjustment of the correct positioning speed and/or exchange of the synchronizer (in automatic units of the regulating means respectively) fault is not corrected.</p> | <p>Replace control box.</p> |

| PROBLEM | PROBABLE CAUSE | CORRECTIVE ACTION |
|---|---|--|
| <p>Intermediate speed ranges are fully or partly missing (machine runs only at positioning or maximum speed).</p> | <p>Maladjustment of potentiometer for intermediate speed ranges at control box.</p> | <p>Adjust potentiometer according to VARIOSTOP control type Instruction Booklet.</p> |
| | <p>In automatic units: Control key, selection switch or regulating means in main control of machine maladjusted or defective.</p> | <p>Correct adjustment in accordance with instructions given by manufacturer. If necessary, replace defective parts.</p> |
| | <p>Control box defective.</p> | <p>Replace control box.</p> |
| <p>No additional functions (e.g. trimming, lifting of presser foot, etc.)</p> | <p>Machine pedal is jammed or is improperly adjusted (mechanical trimmers can thus not be actuated).</p> | <p>Repair or replace pedal.</p> |
| | <p>In machines with safety switches at trimmer or other additional devices: switch not correctly actuated or defective, cord to switch interrupted.</p> | <p>Check switch for correct function and adjust accordingly. If necessary, replace switch, actuating means, or cord.</p> |
| | <p>Additional device not or improperly connected, cord wrong or defective. Cord not or improperly connected to the socket in the control box or in the additional device.</p> | <p>Correct connections according to VARIOSTOP control type Instruction Booklet. If necessary, replace cord.</p> |
| | <p>Additional device defective (e.g. actuating eccentric maladjusted, magnet or magnetic valve is jammed or burnt, knife jams, etc.)</p> | <p>Repair device.</p> |

